

Electronic Supplementary Information

for

Kinetic monitoring of glutathione-induced silver

nanoparticle disintegration

Claudia Kästner, Patrick E. J. Saloga and Andreas F. Thünemann*

Bundesanstalt für Materialforschung und –prüfung (BAM), Unter den Eichen 87, 12205 Berlin,
Germany

*Author E-mail and phone: andreas.thuenemann@bam.de, +4930-8104-1610

Table of contents

1. TEM images.....	2
2. SAXS data.....	3

1. TEM images

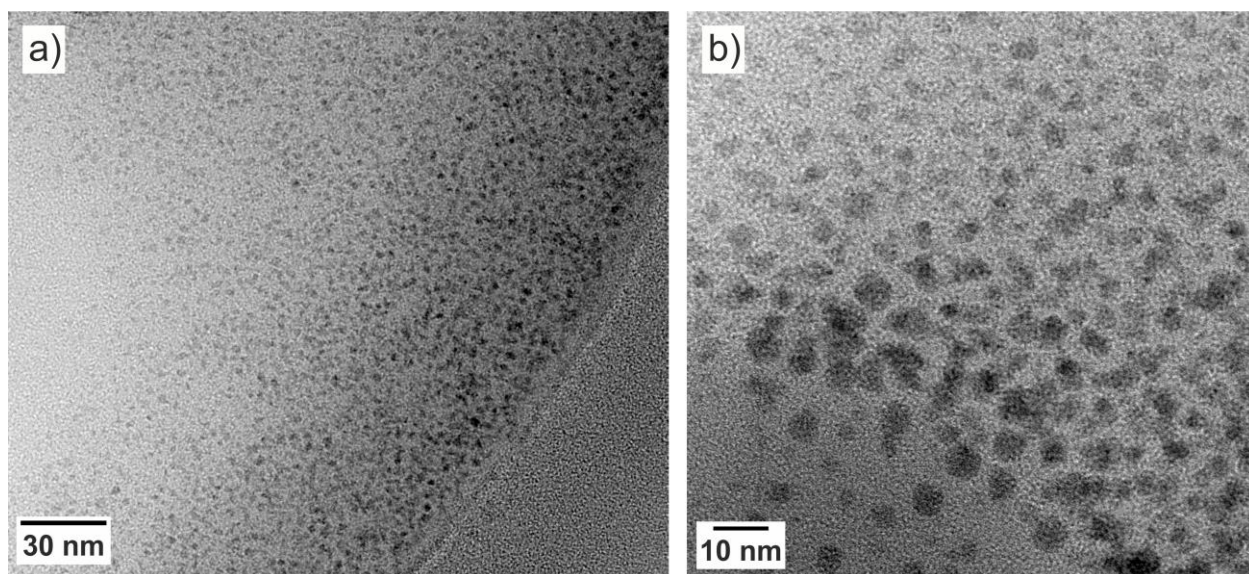


Figure S1. TEM pictures of the silver nanoparticles after addition of GSH. An overview is given in (a) and a detailed view in (b).

2. SAXS data

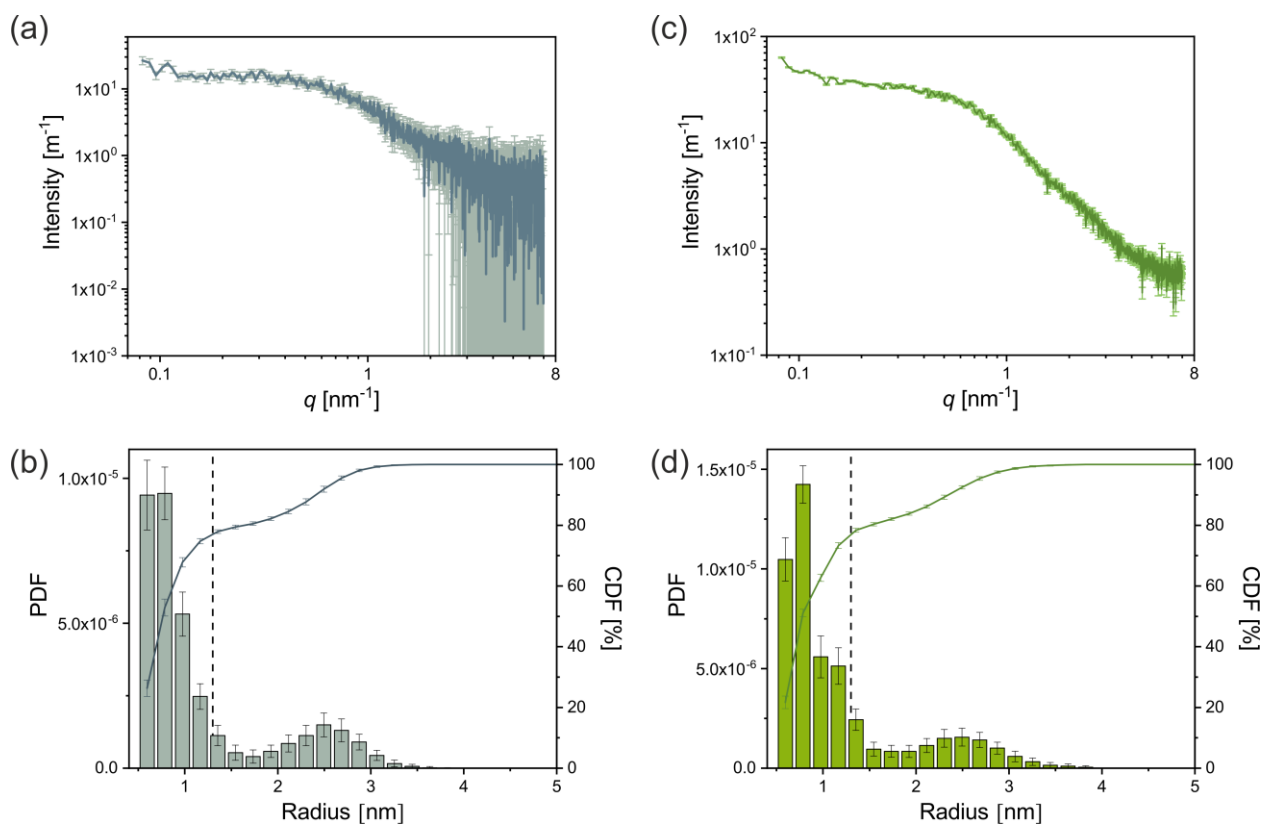


Figure S2. Comparison of the uncertainties of scattering curves and the corresponding volume-weighted size distributions in dependence of the number of averaged 10 s individual measurements when averaging over (a, b) 120 or (c, d) 8640 measurement cycles. The PDFs are given as volume fraction, the CDFs as volume fraction in percentage. Vertical dashed lines at 1.3 nm show the boundary between the two nanoparticle populations $\mathbf{p}_{\text{small}}$ and $\mathbf{p}_{\text{large}}$.