

Supporting Information

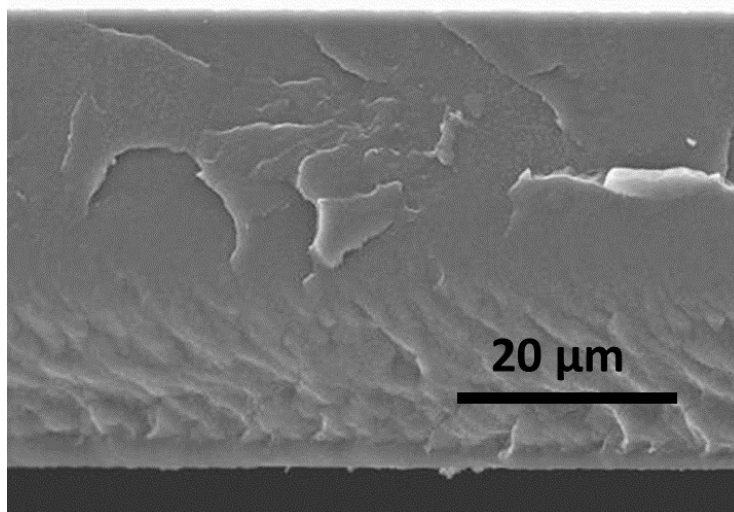


Figure S1. SEM image of a P(VDF-TrFE) composite film at a magnification of 5000x.

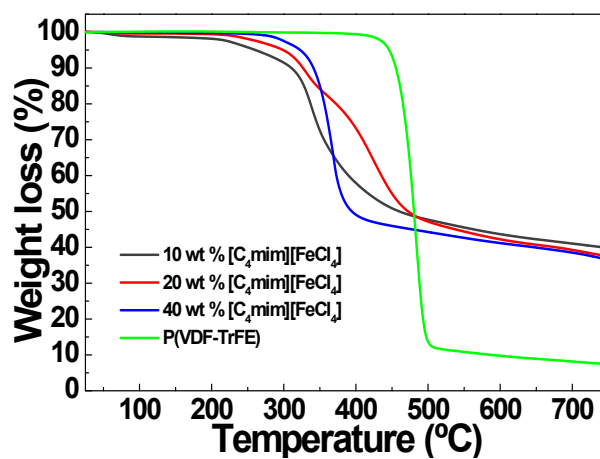


Figure S2. TGA curves measured at 10 °C.min⁻¹ for the neat P(VDF-TrFE) films and P(VDF-TrFE)/[C₄mim][FeCl₄] nanocomposites with different contents of [C₄mim][FeCl₄].