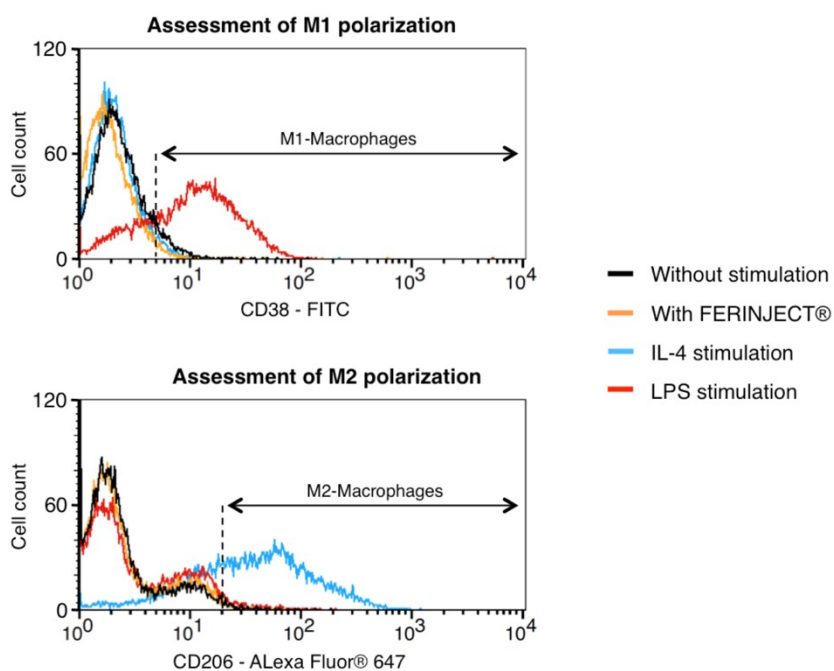


Supplementary data 1 - Assessment of NP-uptake by cell granulometry. NP incubation: 24h. Ferinject = 1mg/mL and NP-TiO₂ = 50µg/mL. Statistical confidence (Student T-test) is indicated as follows *p ≤ 0,01.



Supplementary data 2 - Macrophage polarization in the presence or absence of Ferinject. Positive M1 control: incubation with LPS (100ng/mL). Positive M2 control: incubation with IL-4 (20ng/mL).