

**Natural Killer cells immune response requires a minimal nanoscale distribution of activating  
antigens – Supplementary Information**

Yossi Keydar<sup>†‡</sup>, Guillaume Le Saux<sup>†‡</sup>, Avishay Edri<sup>§</sup>, Netanel Bar-Hanin<sup>†‡</sup>, Esti Toledo<sup>†‡</sup>, Ashish  
Pandey<sup>†‡</sup>, Vuraj Bhingardive<sup>†‡</sup>, Uzi Hadad<sup>‡</sup>, Angel Porgador<sup>§</sup>, and Mark Schwartzman<sup>†‡\*</sup>

**S1. NK cell area in suspension**

Nk cells were re-suspended and imaged to determine their nominal spreading in the absence of contact with a surface (Fig. S1). Cell showed a distinct round shape as indicated by their circularity of  $0.999 \pm 0.001$ , 1 being that of a perfect circle. Their projected area was found to be  $79 \pm 12 \mu\text{m}^2$ .

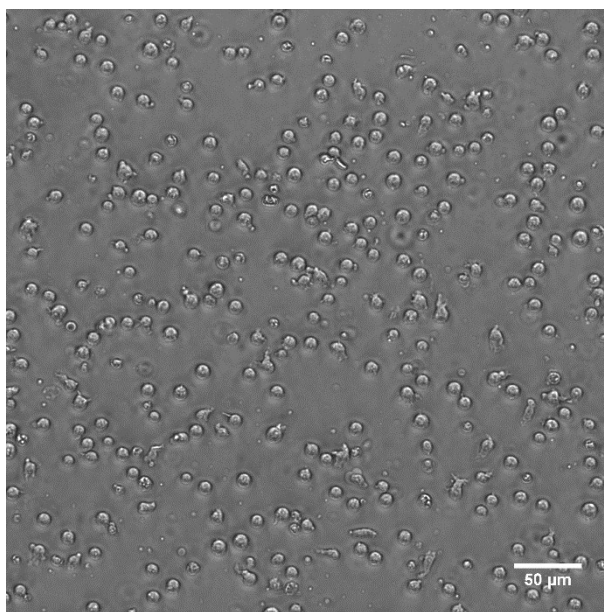


Figure S1. NK cells in suspension imaged.