

## Supporting Information

### **Engineering and evaluation of self-assembled amyloid particles as nanovaccine against the Chikungunya virus**

Margaryta Babych<sup>1,2</sup>, Geneviève Bertheau-Mailhot<sup>3,4</sup>, Ximena Zottig<sup>1,2</sup>, Jessica Dion<sup>3,4</sup>, Laurie Gauthier<sup>3,4</sup>, Denis Archambault<sup>3,4\*</sup> and Steve Bourgault<sup>1,2\*</sup>

<sup>1</sup>*Department of Chemistry, Université du Québec à Montréal, Montréal, Qc, CANADA*

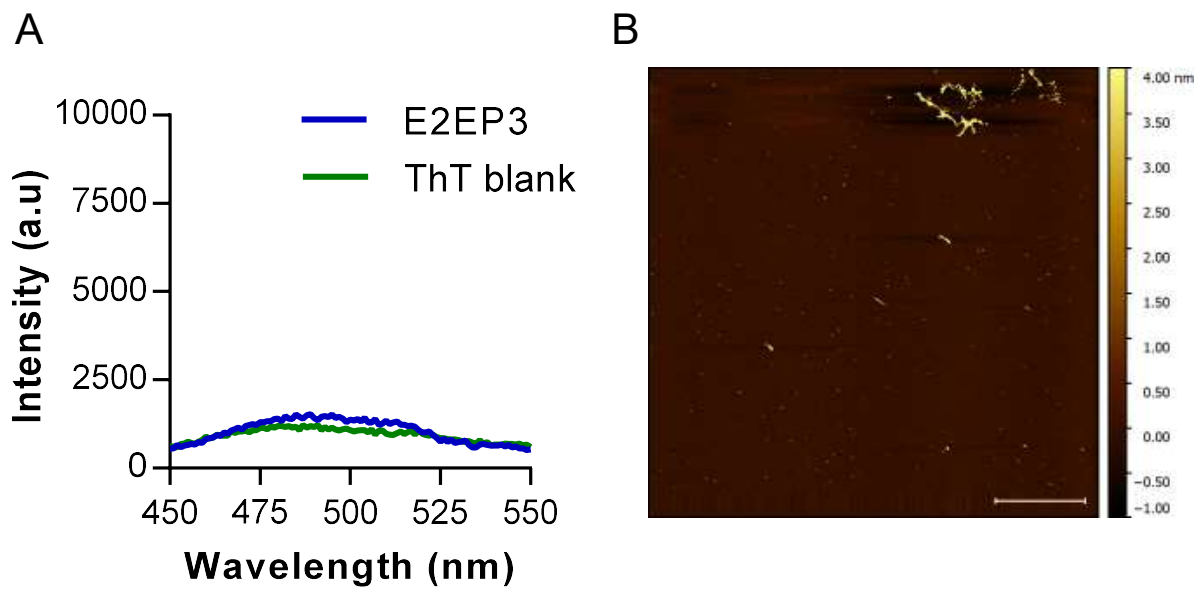
<sup>2</sup>*Quebec Network for Research on Protein Function, Engineering, and Applications, PROTEO*

<sup>3</sup>*Department of Biological Sciences, Université du Québec à Montréal, Montréal, Qc, CANADA*

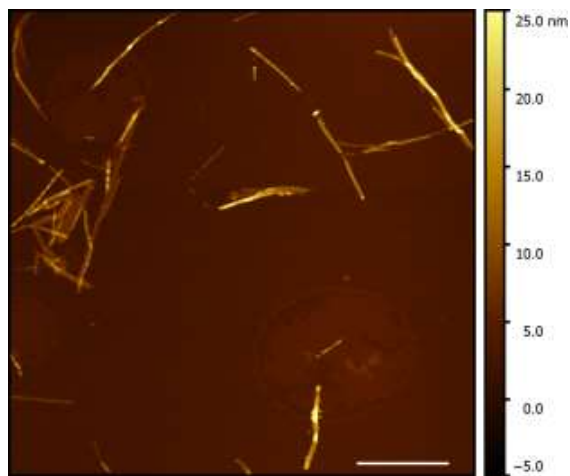
<sup>4</sup>*The Swine and Poultry Infectious Diseases Research Centre, CRIPA*

## Table of contents

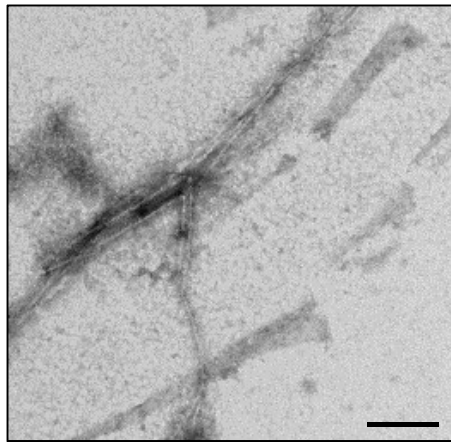
<b>Fig. S1</b>	ThT fluorescence and AFM images of E2EP3 peptide epitope after 96 hours incubation.....	3
<b>Fig. S2</b>	Representation AFM images of I <sub>10</sub> amyloid assemblies.....	4
<b>Fig. S3</b>	TEM immunogold labeling of I <sub>10</sub> amyloid assemblies.....	5
<b>Fig. S4</b>	CD analysis of fluorescent labelled E2EP3-I <sub>10</sub> fibrils.....	6
<b>Fig. S5</b>	IgG responses against the I <sub>10</sub> scaffold.....	7
<b>Fig. S6</b>	IgE responses against the I <sub>10</sub> scaffold.....	8



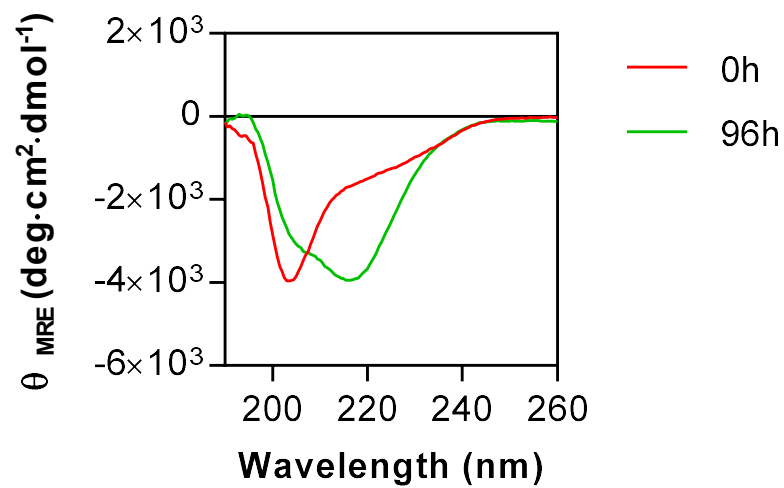
**Fig. S1** (A) ThT fluorescence and (B) AFM image of the E2EP3 peptide epitope after 96 h. incubation under constant agitation in Tris-HCl (20 mM, pH 7.4). (B) Scale bar is 2  $\mu\text{m}$ .



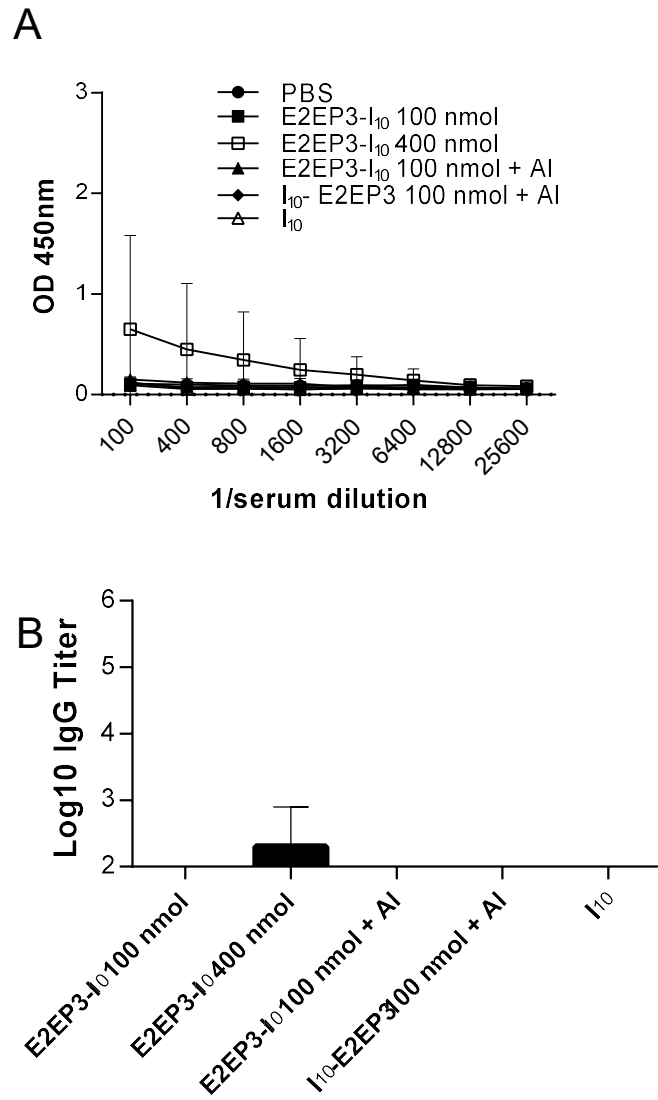
**Fig. S2** Representative AFM images of I<sub>10</sub> amyloid assemblies after 96 h. incubation.  
Scale bar is 2 μm.



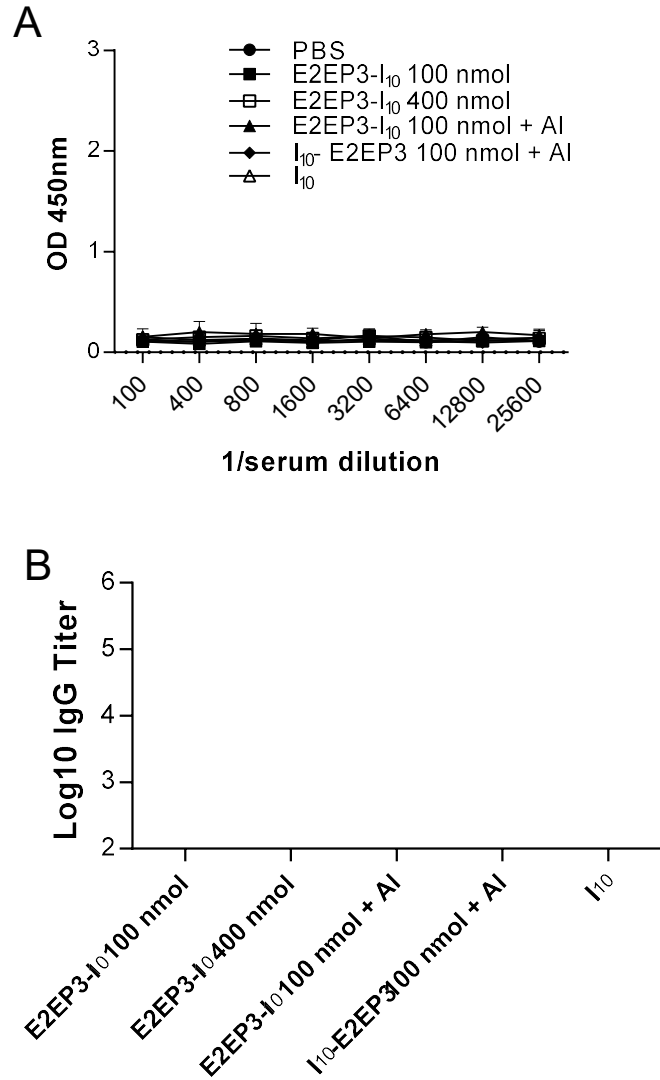
**Fig. S3** Immunogold labeling of I<sub>10</sub> amyloid assemblies with anti-E2EP3 primary antibody observed by transmission electron microscopy. Scale bar is 200 nm.



**Fig. S4** CD analysis of fluorescent labelled E2EP3-I<sub>10</sub> fibrils (30% Fluo-E2EP3-I<sub>10</sub> and 70% E2EP3-I<sub>10</sub>) before (0 h.) and after (96 h.) incubation under constant rotational agitation.



**Fig. S5.** IgG responses against the I<sub>10</sub> scaffold. Total IgG ELISA absorbance values for serially diluted I<sub>10</sub>-specific serum (A) and antibody titers (B) from the final bleed after immunization with amyloid fibrils (100 or 400 nmol), with or without Alum (Al), as indicated. Serum was collected 42 days after the initial injection and IgG titers were measured by ELISA on plates coated with I<sub>10</sub>.



**Fig. S6.** IgE responses against the I<sub>10</sub> scaffold. Total IgE ELISA absorbance values for serially diluted I<sub>10</sub>-specific serum (A) and antibody titers (B) from the final bleed after immunization with amyloid fibrils (100 or 400 nmol), with or without Alum (Al), as indicated. Serum was collected 42 days after the initial injection and IgE titers were measured by ELISA on plates coated with I<sub>10</sub>.