

Supplementary Materials: In situ structural evolution of single particle model catalysts under ambient pressure reaction conditions

Sara Fernández,^{†,‡} Lu Gao,[¶] Jan Philipp Hofmann,[¶] Jérôme Carnis,^{†,‡} Stéphane
Labat,[†] Gilbert A. Chahine,[‡] Arno J.F. van Hoof,[¶] M. W. G. M. (Tiny)
Verhoeven,[¶] Tobias U. Schüllli,[‡] Emiel J. M. Hensen,[¶] Olivier Thomas,[†] and
Marie-Ingrid Richard^{*,†,‡}

[†]*Aix Marseille Université, CNRS, Université de Toulon, IM2NP UMR 7334, 13397,
Marseille*

[‡]*ID01/ESRF, 6 rue Jules Horowitz, BP220, F-38043 Grenoble Cedex, France*

[¶]*Laboratory of Inorganic Materials Chemistry, Department of Chemical Engineering and
Chemistry, Eindhoven University of Technology, P. O. Box 513, 5600MB Eindhoven, The
Netherlands.*

E-mail: marie-ingrid.richard@im2np.fr

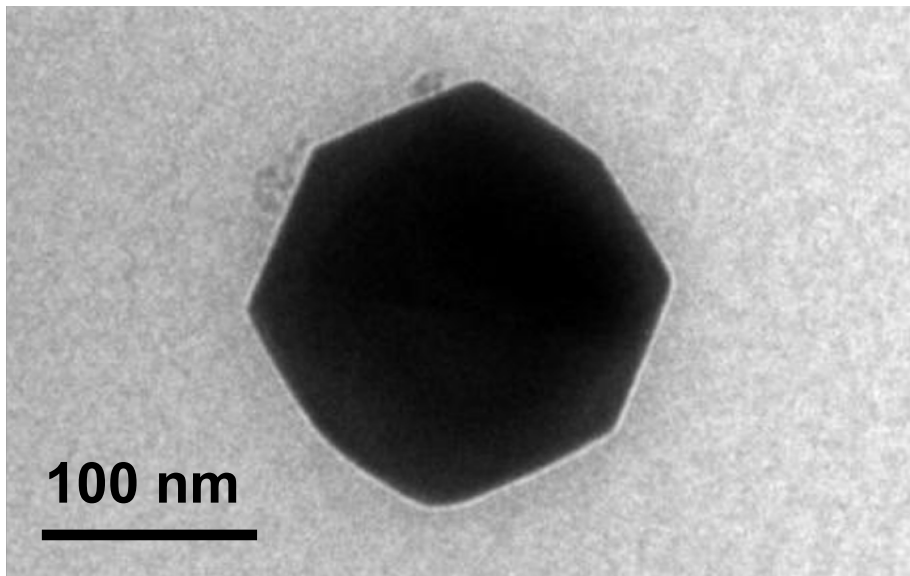


Figure 1: Transmission microscopy image of a THH Pt nanoparticle.

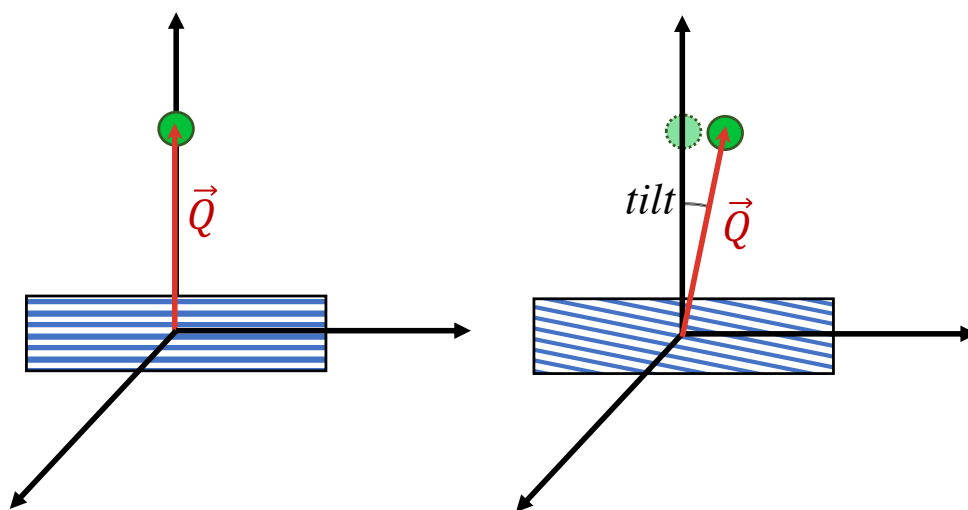


Figure 2: Schematic drawing describing how to determine the crystalline orientation (tilt) of the measured planes.