

Supporting Information

Skin-Inspired Flexible and High-Sensitivity Pressure Sensor Based on rGO Film with Continuous-Gradient Wrinkles

*Jin Jia, † Guotao Huang, † Jianping Deng, *† and Kai Pan*†*

†College of Materials Science and Engineering (CMSE), Beijing University of Chemical Technology,
Chaoyang District North Third Ring Road 15, Beijing 100029, China

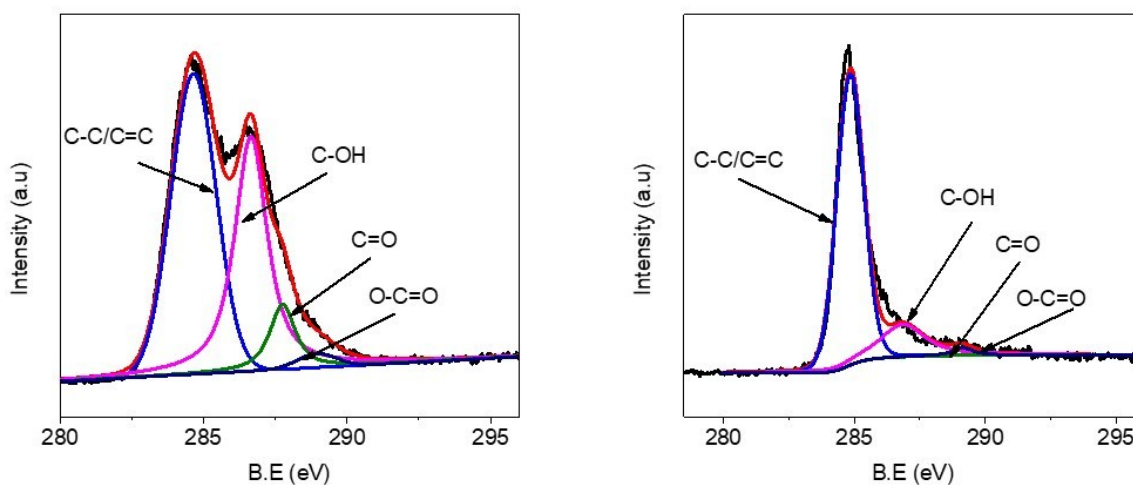


Figure S1. XPS spectra of GO (before reduction) and rGO (after reduction).

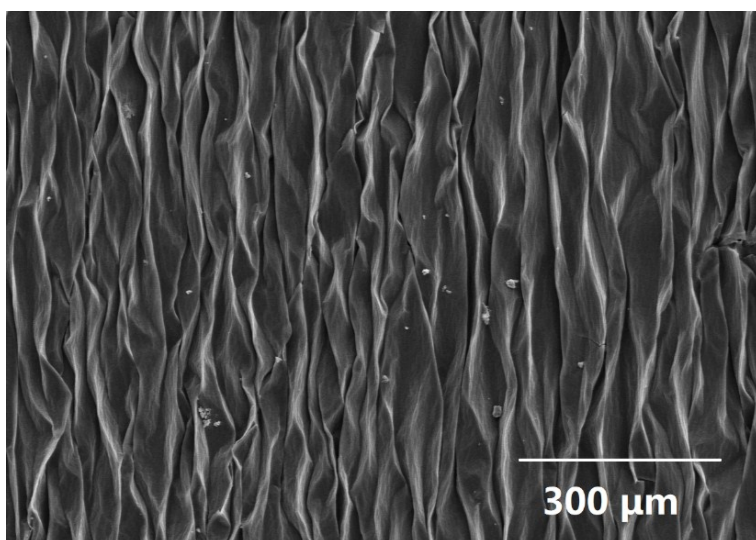


Figure S2. The SEM image of untreated GO film.

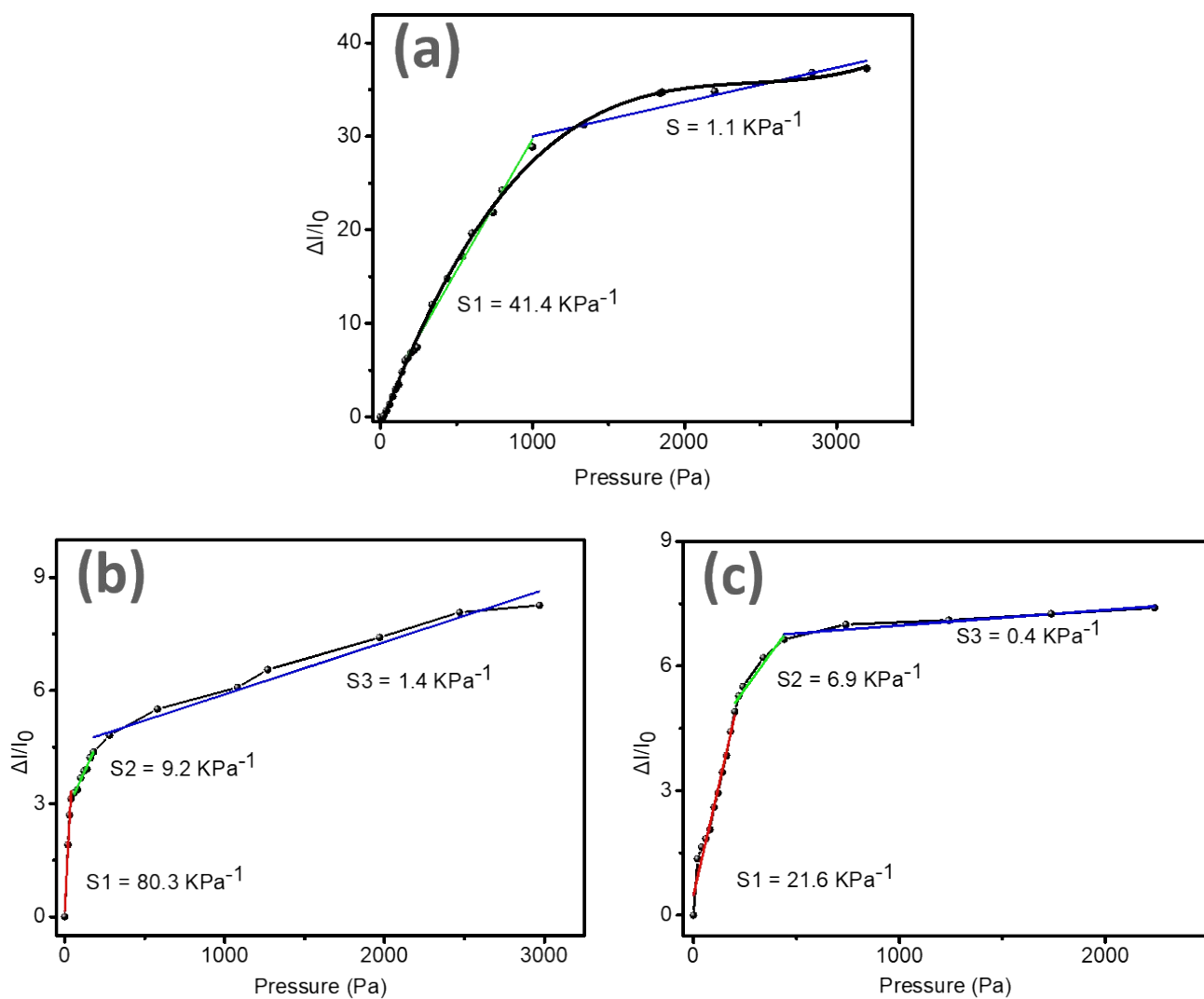


Figure S3. The sensitivity of the sensors at different pre-strain ratios, (a) 50%, (b) 83%, (c) 100%, respectively.

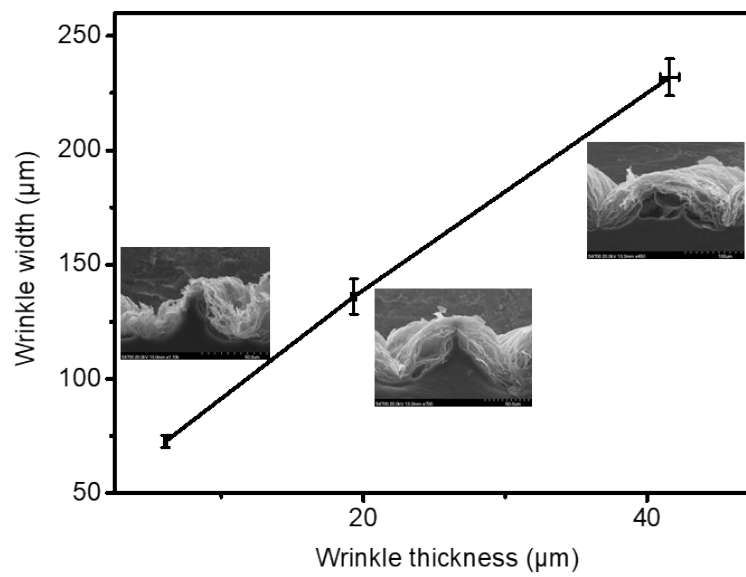


Figure S4. The size distribution of the wrinkles at three different locations

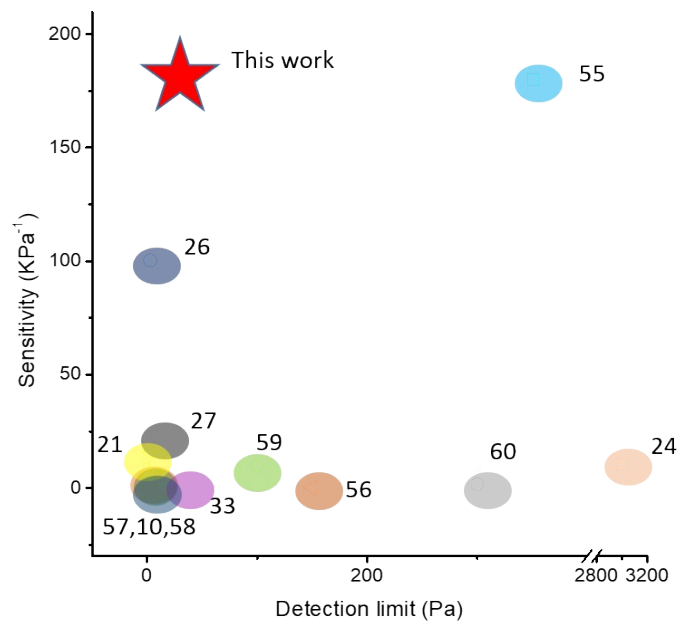


Figure S5. References of the sensitivity and detection limit.