

Fig. S1 Bright-field image of HeLa cells used for Golgi experiments **(a)** HeLa cell used for stiffness tomography experiment without crosslinking of the Golgi apparatus **(b)** HeLa cell used for stiffness tomography experiment with crosslinking of the Golgi apparatus. Scale bars 10 μm . Correlative microscopies were performed inside green squares.

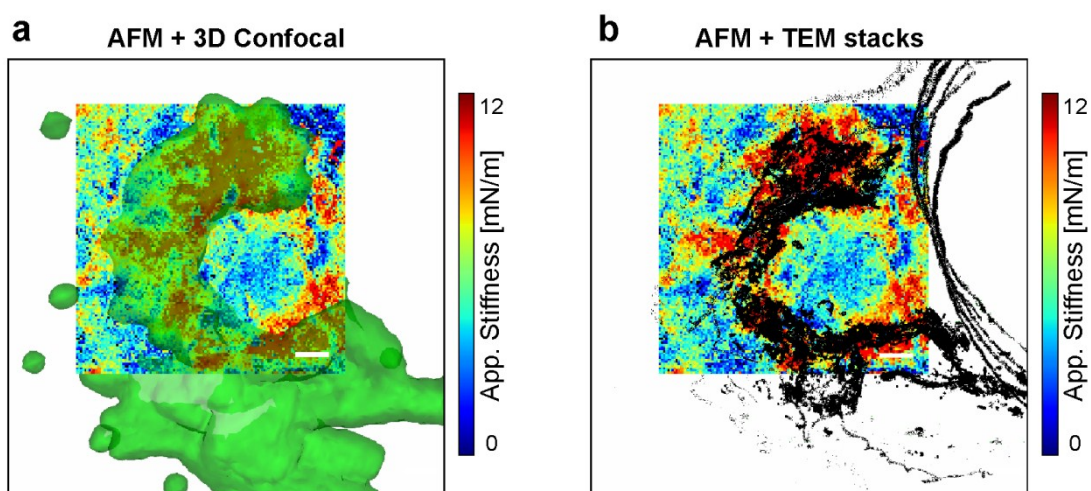


Fig. S2 Correlative microscopies of the Golgi apparatus **(a)** AFM stiffness map correlates with 3D confocal (reconstruction view from top) **(b)** AFM stiffness map correlates with TEM stacks of maximum intensity. Scale bars 1 μm .