

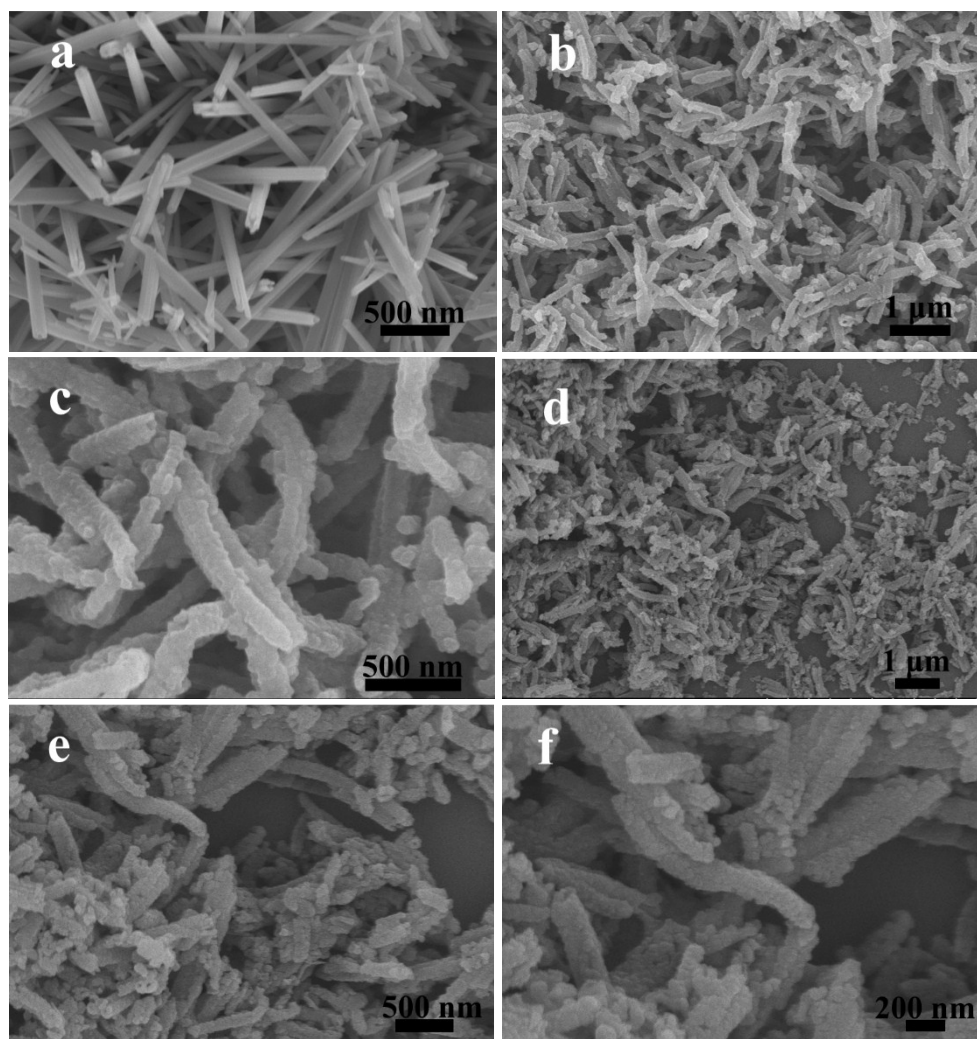
Supporting Information

Sulfur Impregnation in Polypyrrole-Modified MnO₂ Nanotubes: Efficient Polysulfide Adsorption for Improved Lithium-Sulfur Battery Performance

Pengcheng Du^{#*a}, Wenli Wei^{#ab}, Yuman Dong^{#a}, Dong Liu^a, Qi Wang^a, Yi Peng^b, Shaowei Chen^{*b}, Peng Liu^{*a}

^a State Key Laboratory of Applied Organic Chemistry and Institute of Polymer Science and Engineering, College of Chemistry and Chemical Engineering, Lanzhou University, Lanzhou 730000, People's Republic of China

^b Department of Chemistry and Biochemistry, University of California, 1156 High Street, Santa Cruz, California 95064, USA



These authors contributed equally to this work.

Fig. S1. Representative SEM images of (a) MnO₂ nanotubes, (b,c) MnO₂-PPy nanotubes, and (d-f) MnO₂-PPy-S.

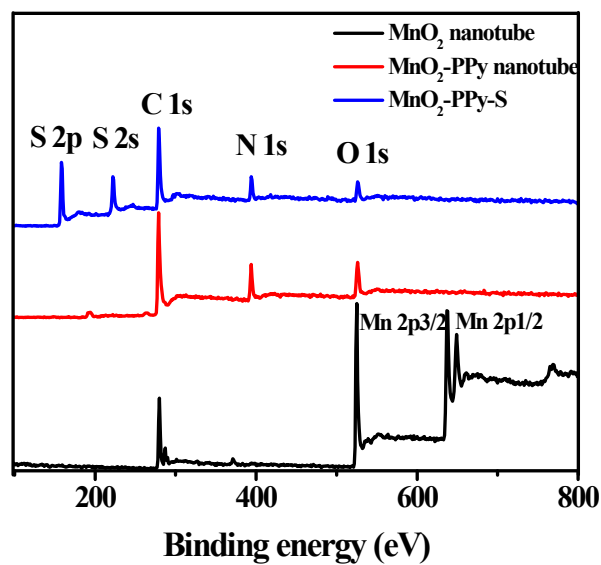


Fig. S2. XPS spectra of MnO₂, MnO₂-PPy, MnO₂-PPy-S.

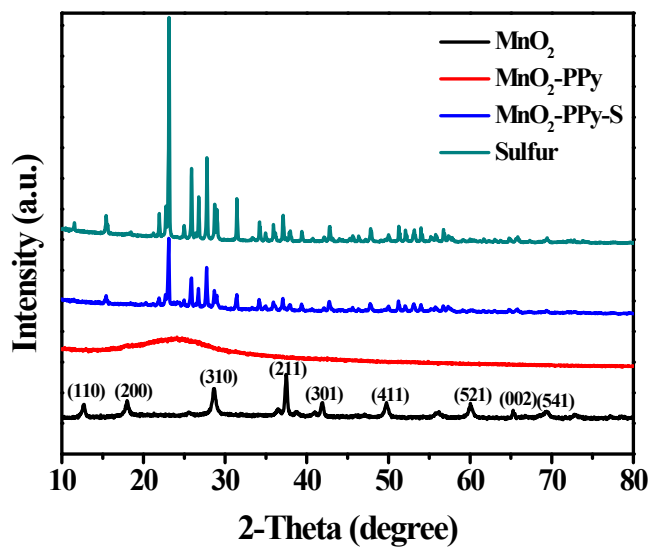


Fig. S3. XRD patterns of MnO₂, MnO₂-PPy, MnO₂-PPy-S and sulfur.

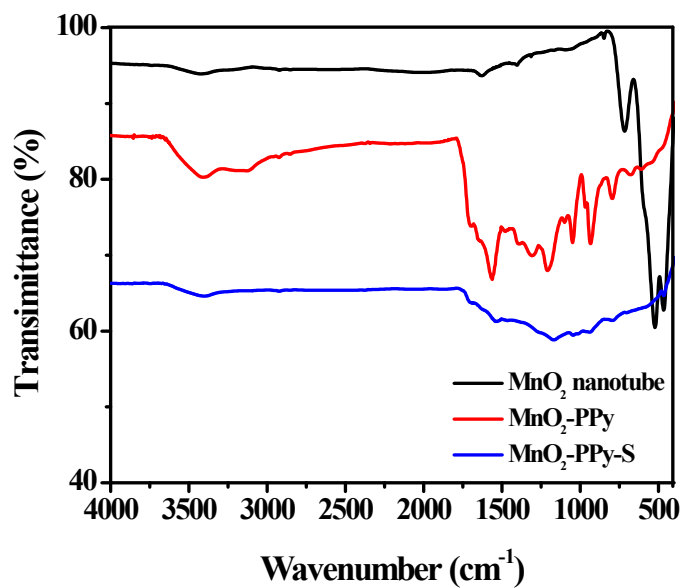


Fig. S4. FT-IR spectra of MnO₂, MnO₂-PPy and MnO₂-PPy-S.

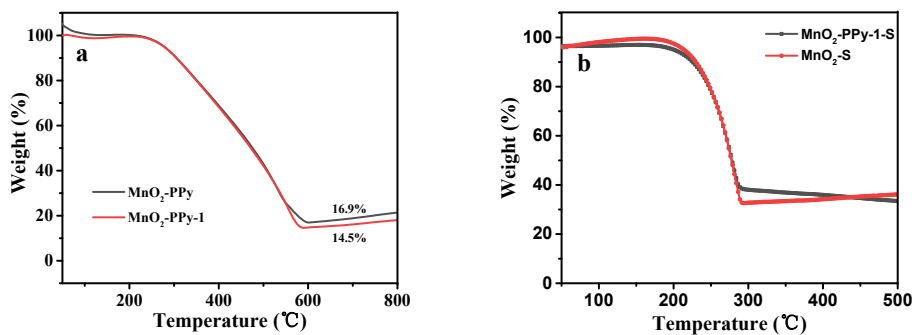


Fig. S5. TGA curve of MnO₂-PPy (a) and MnO₂-PPy-S and MnO₂-S (b).