

α -Tocopherol-based cationic amphiphiles with a novel pH sensitive hybrid linker for gene delivery.

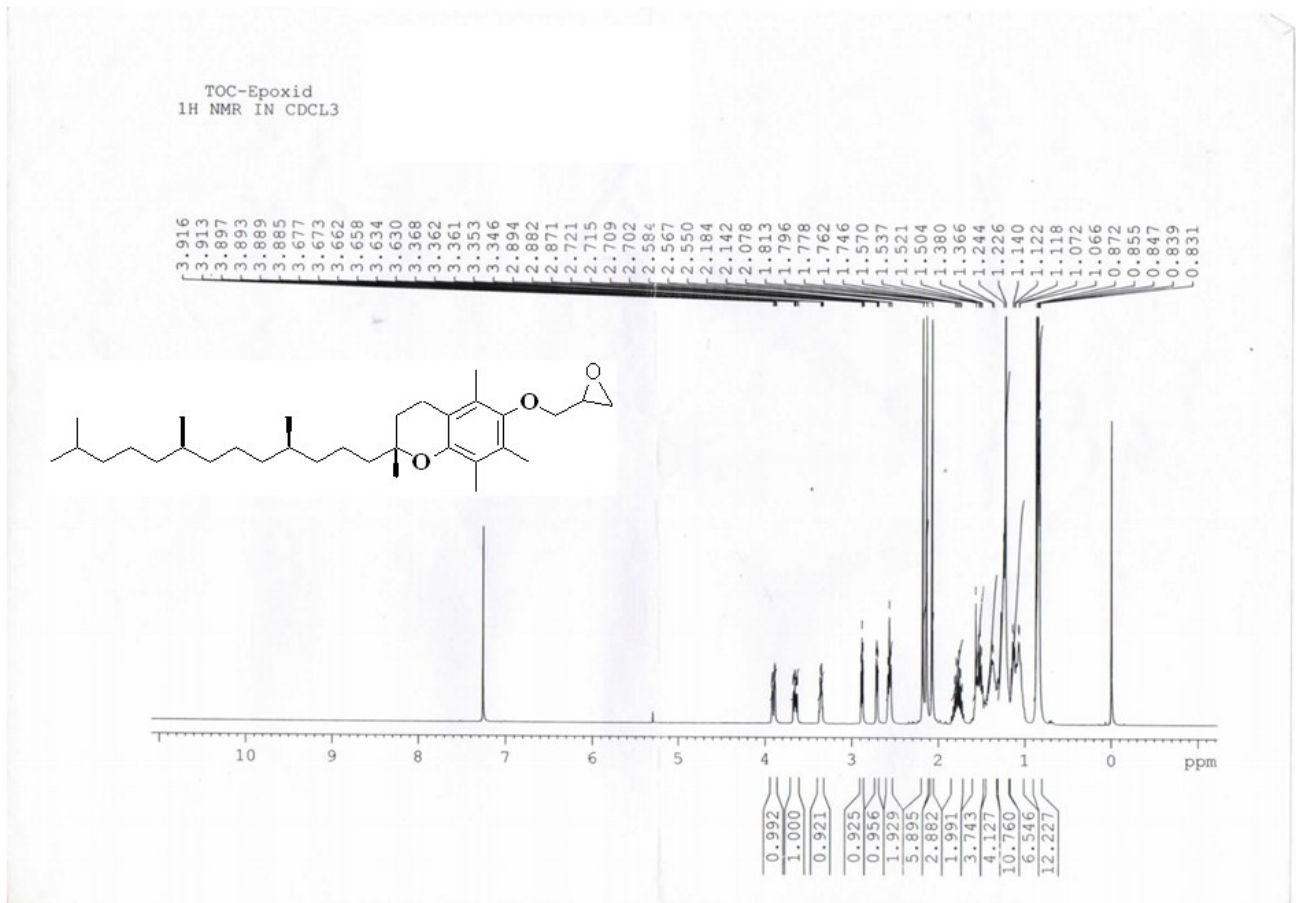
Venkanna Muripiti ¹, Hari Krishnareddy Rachamalla ², Rajkumar Banerjee^{2*} Srilakshmi.V Patri^{1*}

¹National Institute of Technology, Warangal-506004, Telangana, India,

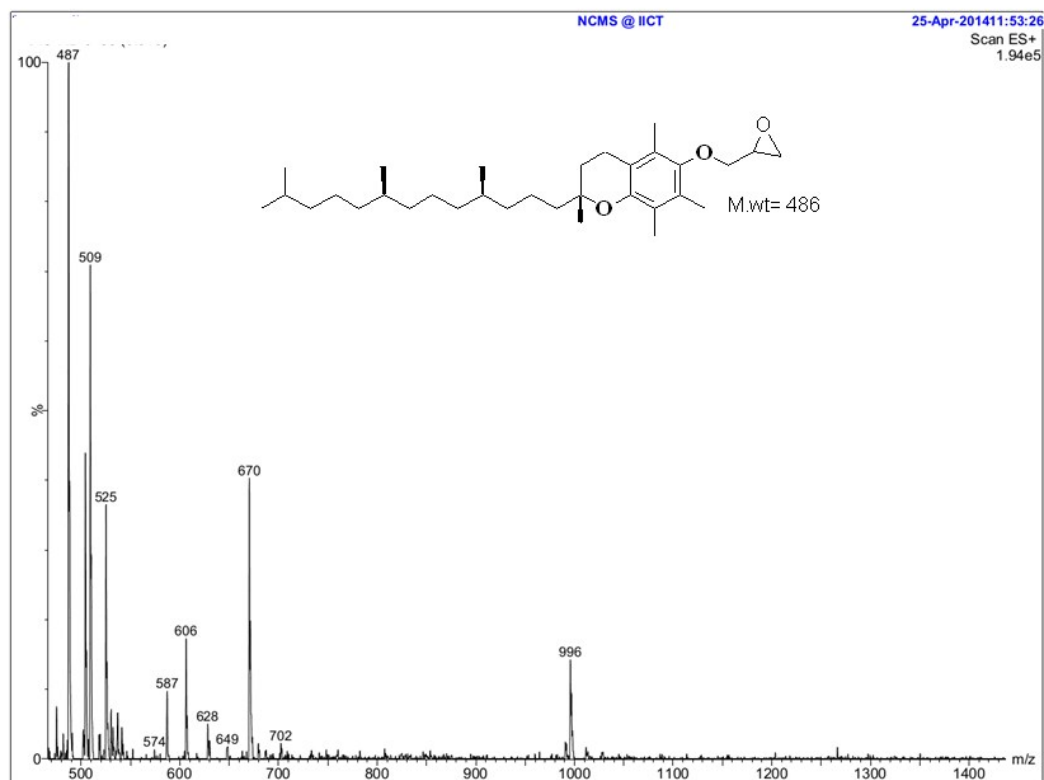
² Center for Chemical Biology, Indian Institute of Chemical Technology, Hyderabad-500607, Telangana, India.

Email: patrisrilakshmi@gmail.com.

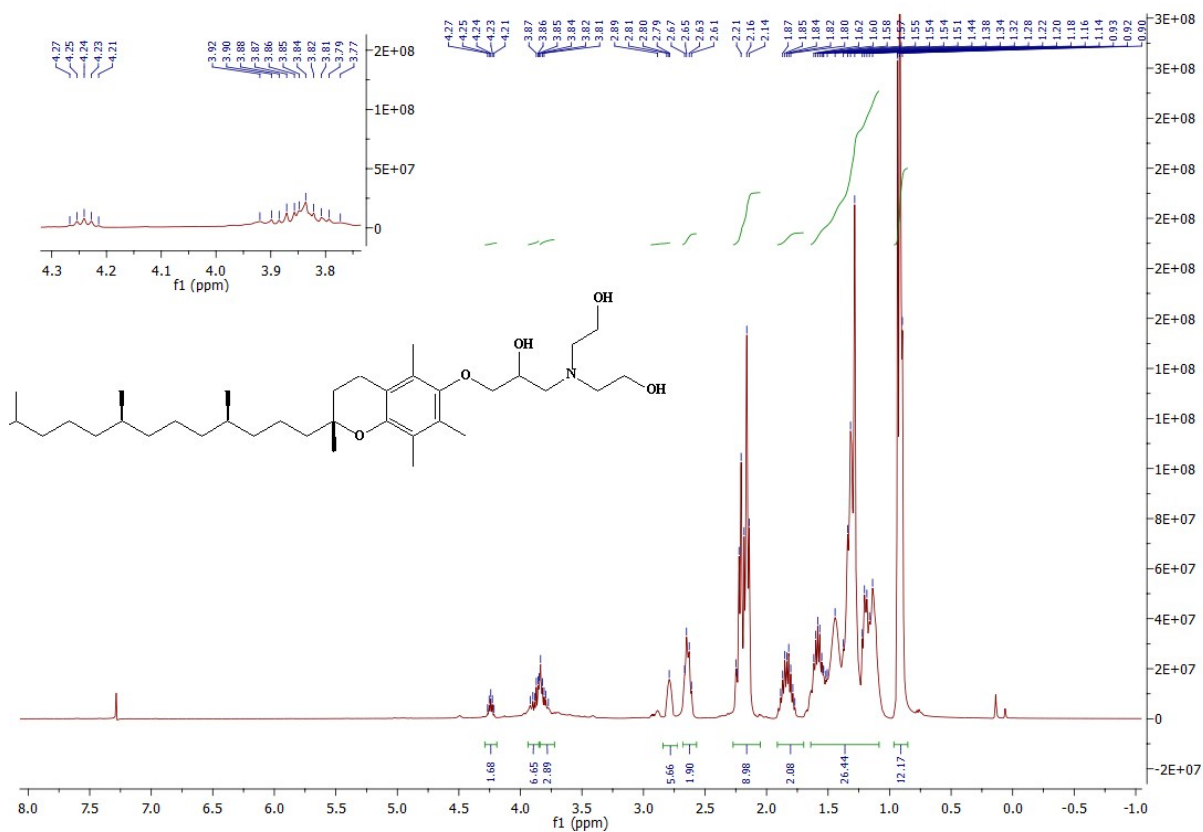
Spectral Data



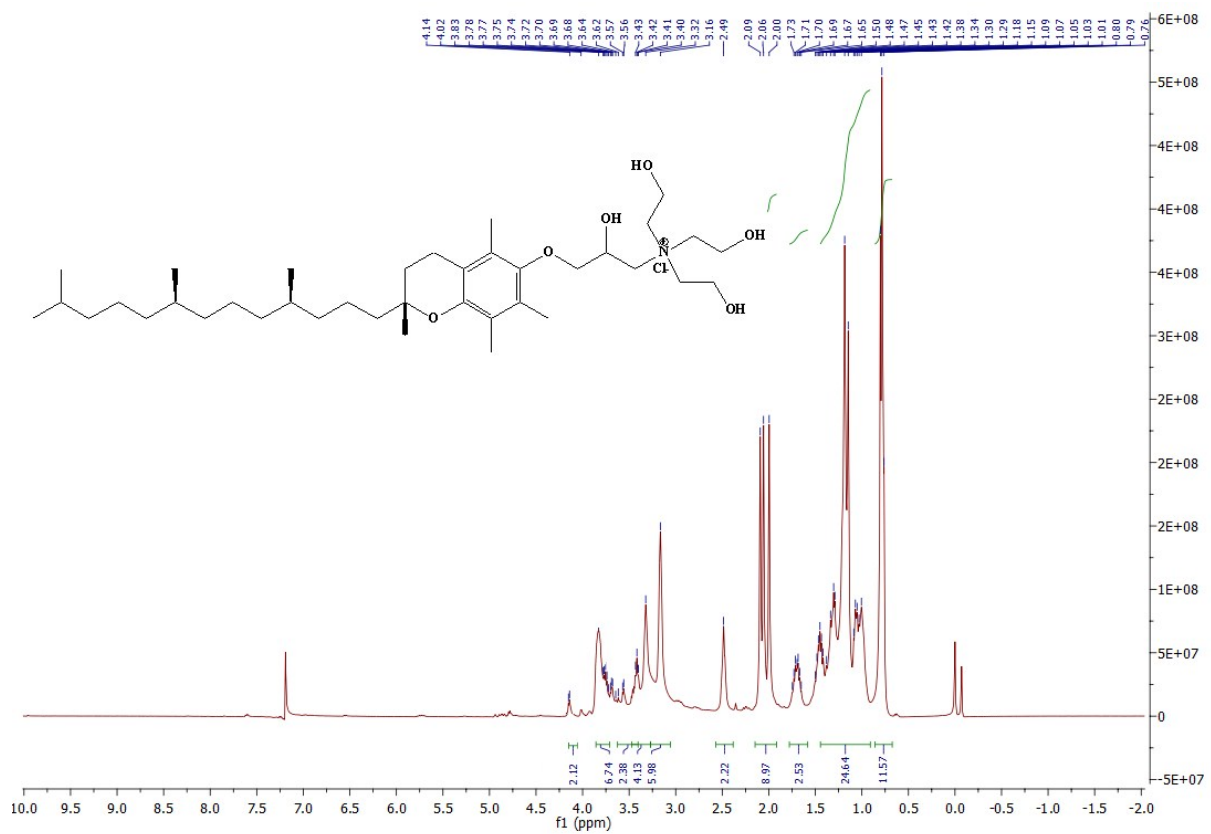
¹H NMR Spectra of Intermediate 1A, Scheme 1A



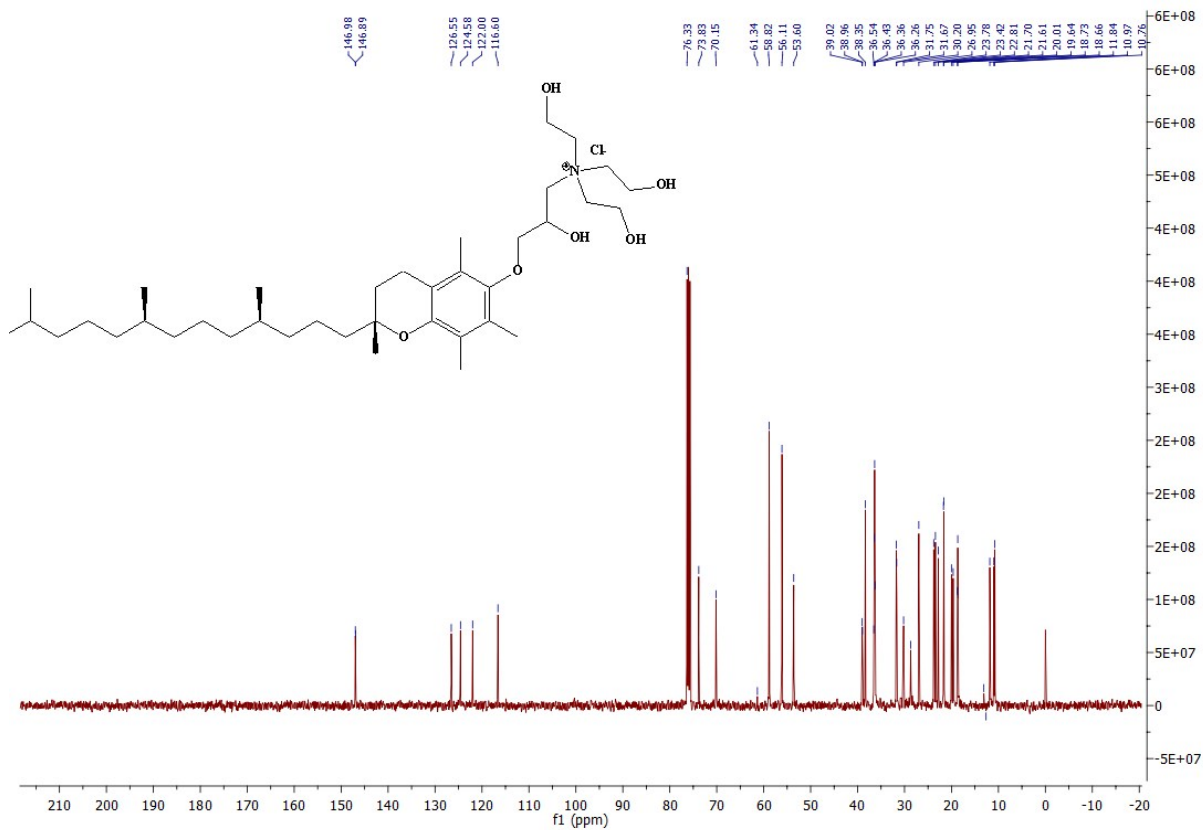
ESI-Mass Spectra of Intermediate 1A, Scheme 1A



¹H NMR Spectra of Intermediate 1B, Scheme 1B



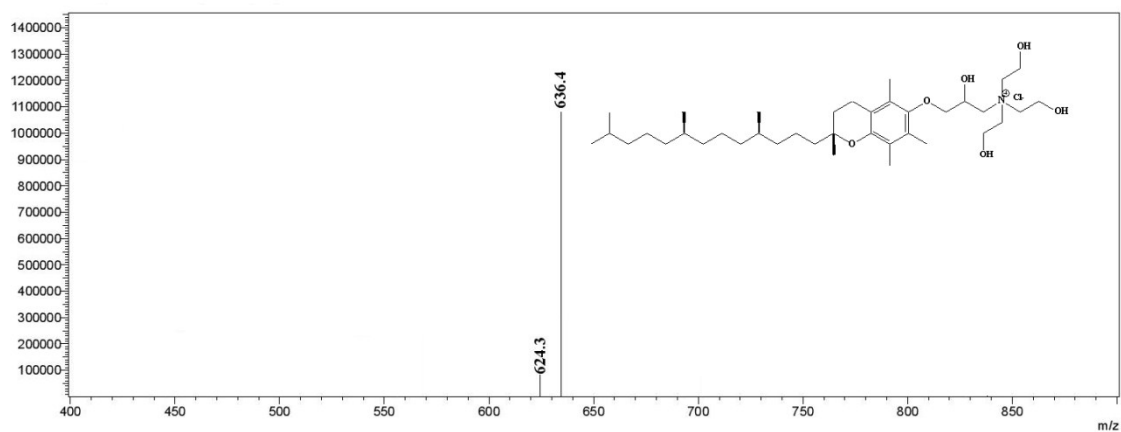
¹H NMR Spectra of 1C (Lp1 lipid), Scheme 1)



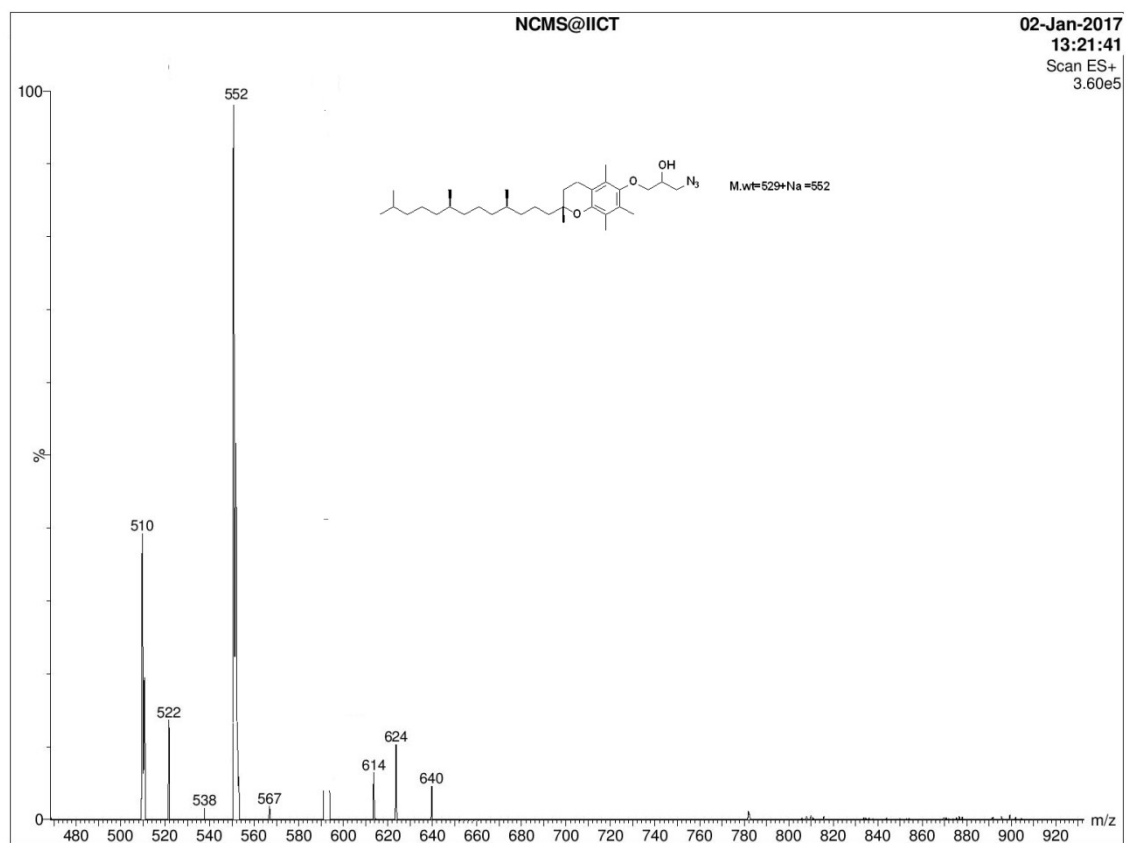
¹³C NMR Spectra of 1C (Lp1 lipid), Scheme 1

**KNBC PHARMA SOLUTIONS (P) LTD
ANALYSIS REPORTS**

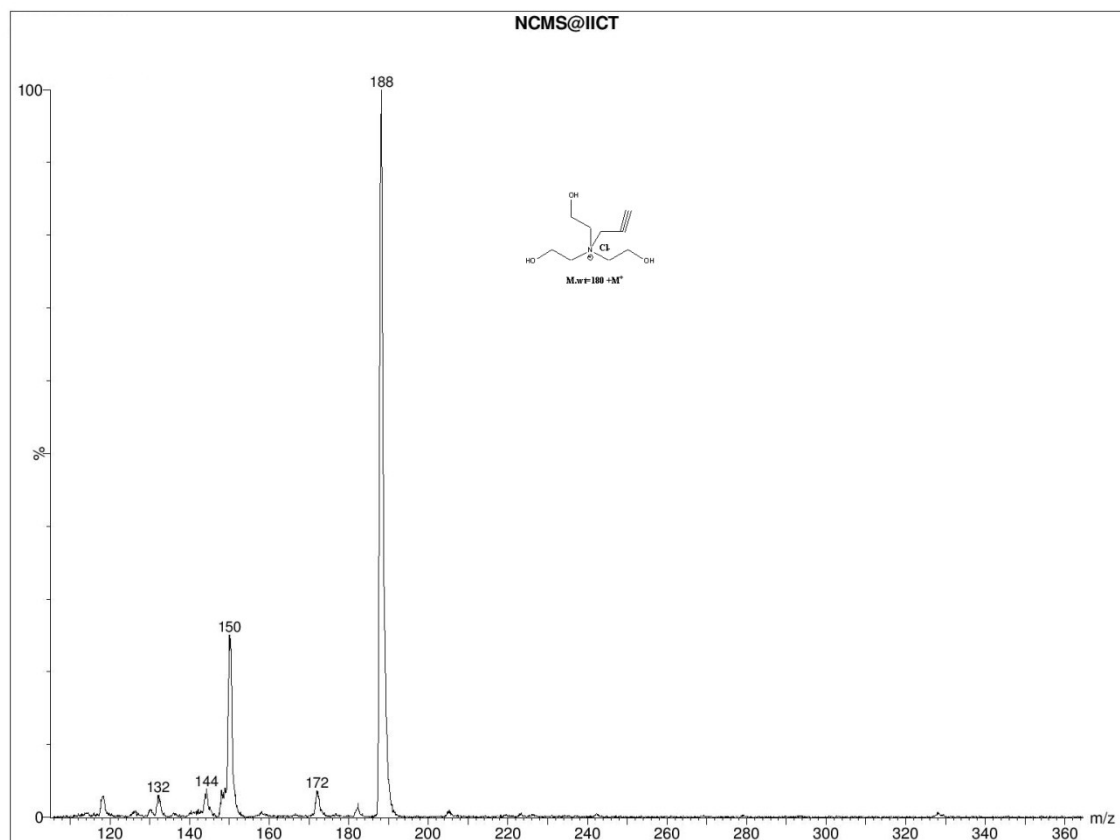
Sample Information



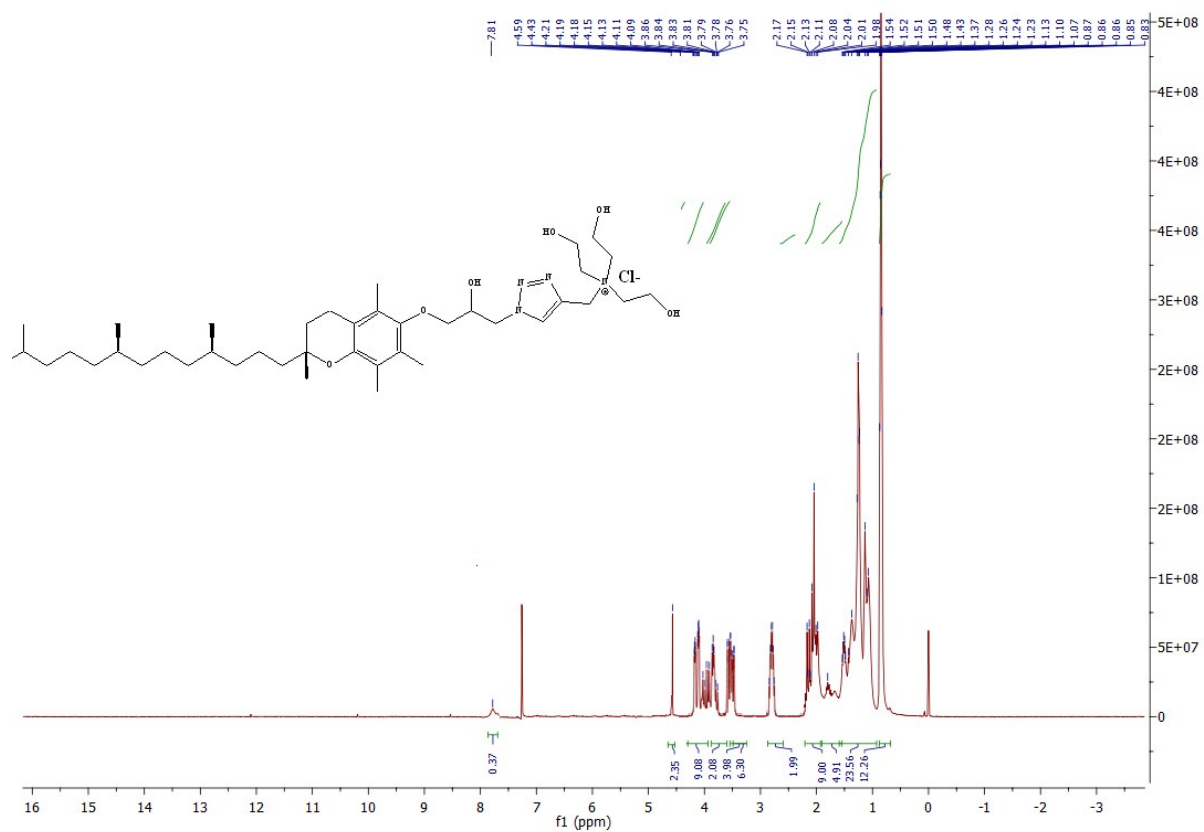
ESI-Mass Spectra of 1C (Lp1 lipid), Scheme 1



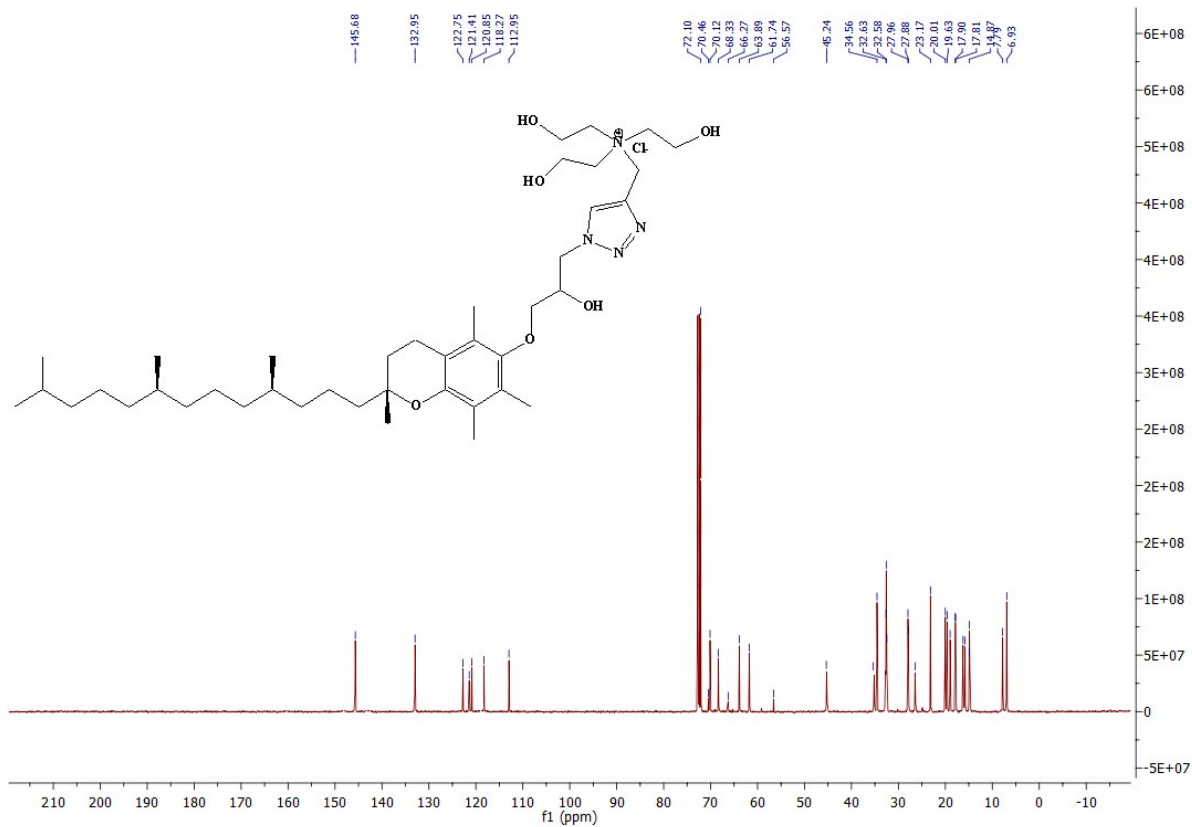
ESI-Mass Spectra of Intermediate 2B, Scheme 2



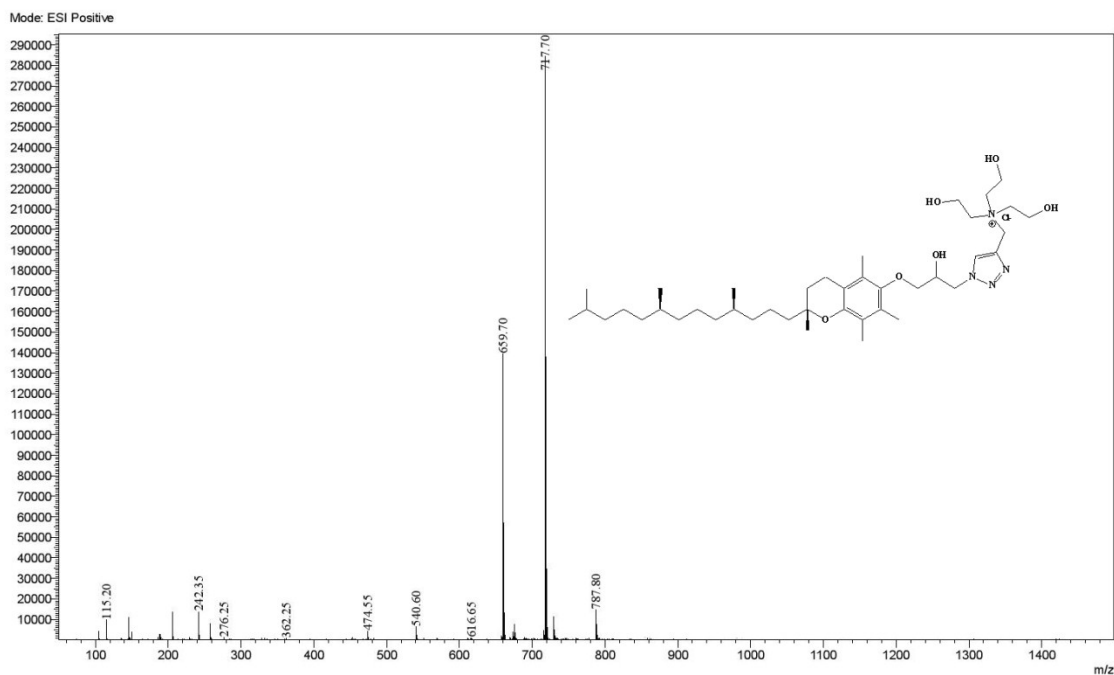
ESI-Mass Spectra of Intermediate 2A, Scheme 2



¹H NMR Spectra of 2D (Lp1 lipid), Scheme 2)



¹³C NMR Spectra of 2D (Lp2 lipid), Scheme 2



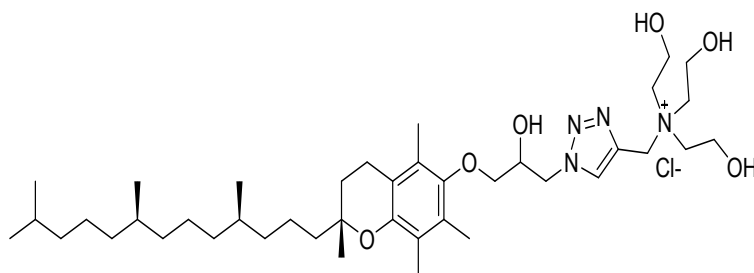
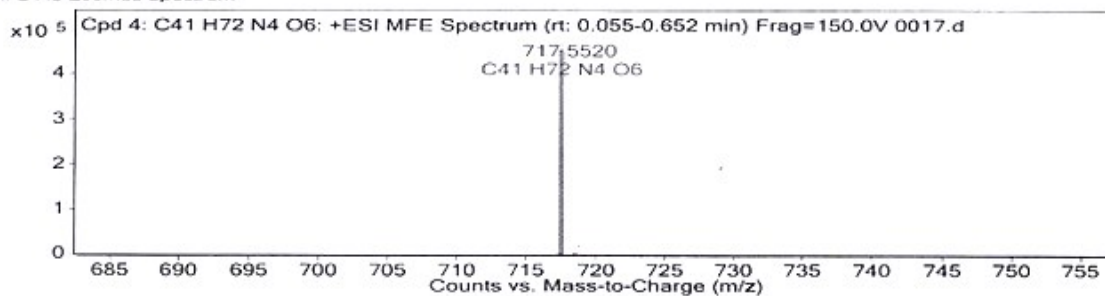
HRMS-Mass Spectra of 2D (Lp2 lipid), Scheme 2

Compound Table

Compound Label	RT	Mass	MFG Formula	MFG Diff (ppm)
Cpd 4: C41 H72 N4 O6	0.188	716.5446	C41 H72 N4 O6	0.86

Compound Label	m/z	RT	Algorithm	Mass
Cpd 4: C41 H72 N4 O6	717.552	0.188	Find by Molecular Feature	716.5446

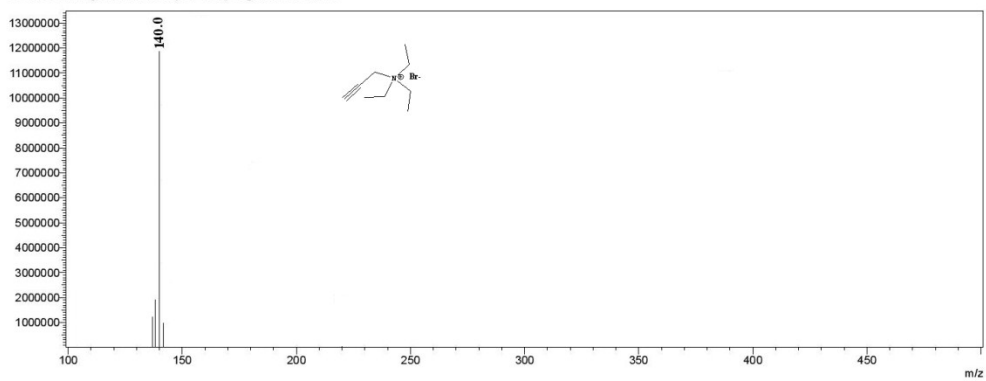
MFE MS Zoomed Spectrum



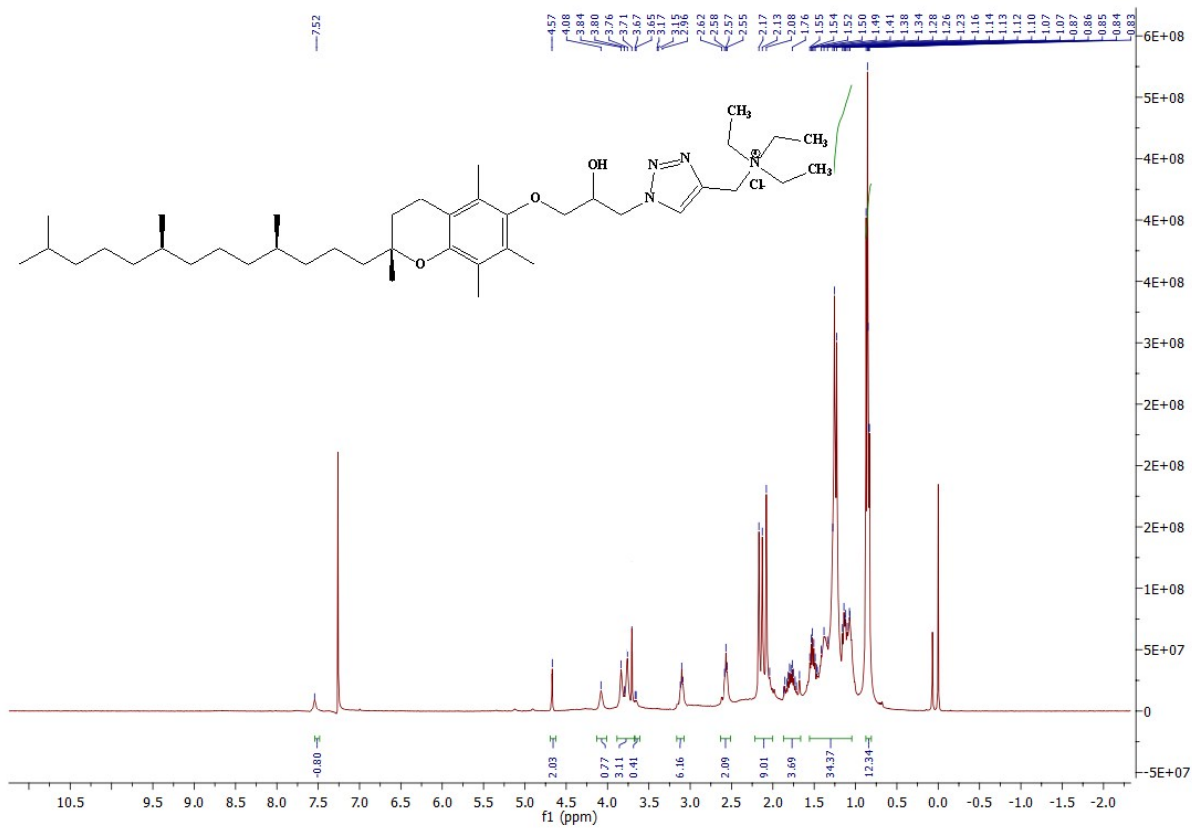
KNBC PHARMA SOLUTIONS (P) LTD ANALYSIS REPORTS

Sample Information

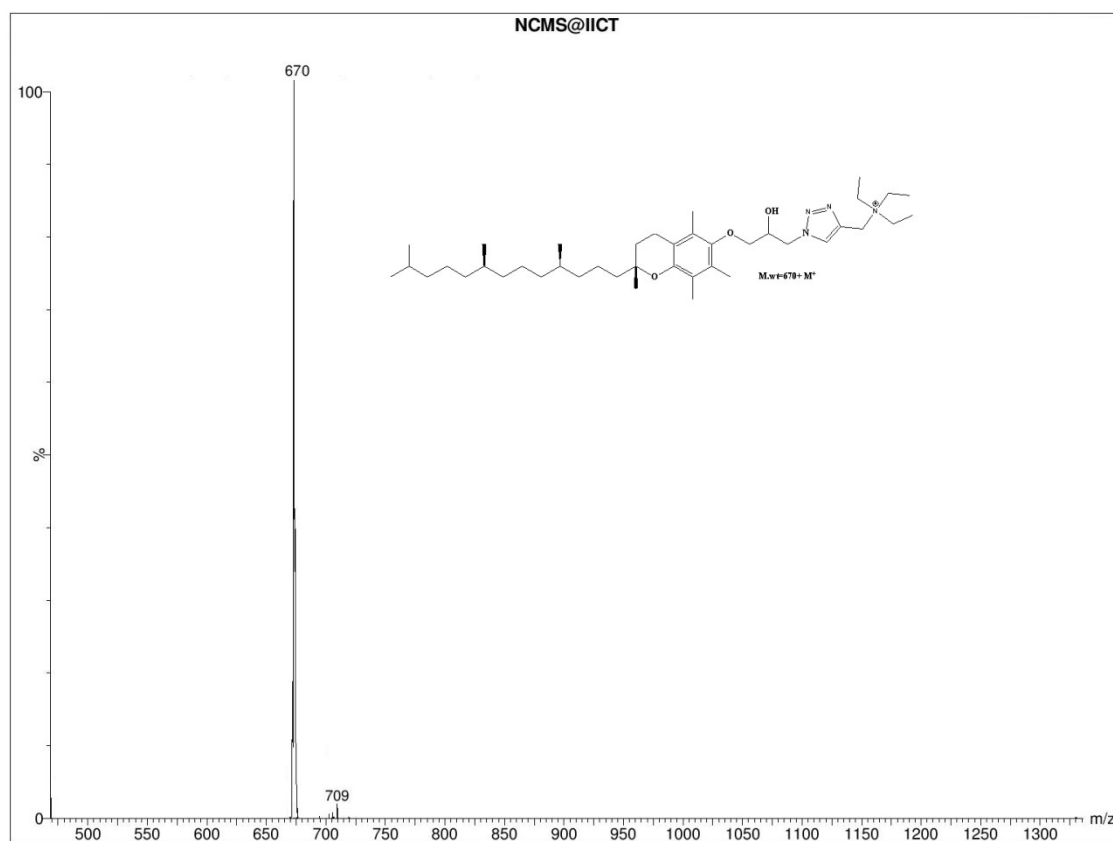
Line#: 1 R. Time: --- (Scan#: ESI-Positive)
Raw Mode Averaged 0.437-1.196 (229-625)
BG Mode Averaged 1.254-1.947 (655-1017) Segment 1 - Event 1



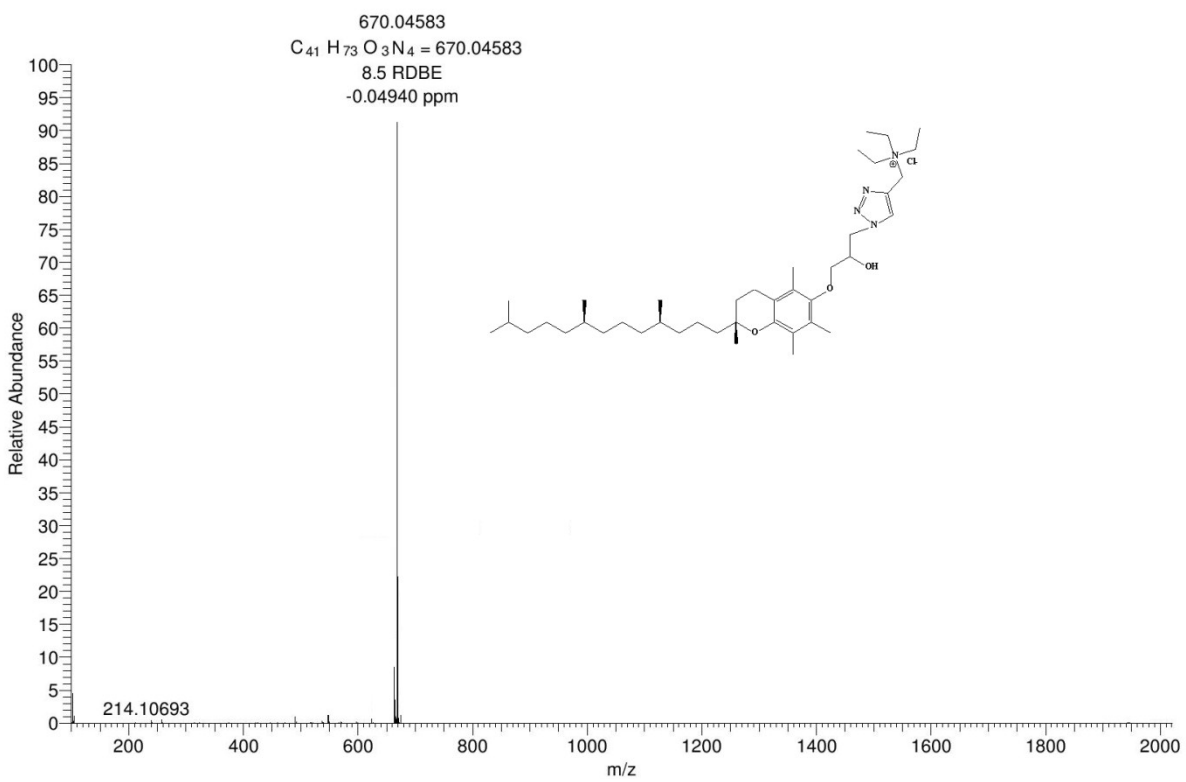
ESI-Mass Spectra of intermediate 3A, Scheme 3



¹H NMR Spectra of 3C (Lp3 lipid), Scheme 3)



ESI-Mass Spectra of 3C (Lp3 lipid), Scheme 3



HRMS-Mass Spectra of 3C (Lp3 lipid), Scheme 3

HPLC Profiles of Lp1, Lp2 & Lp3 lipids.

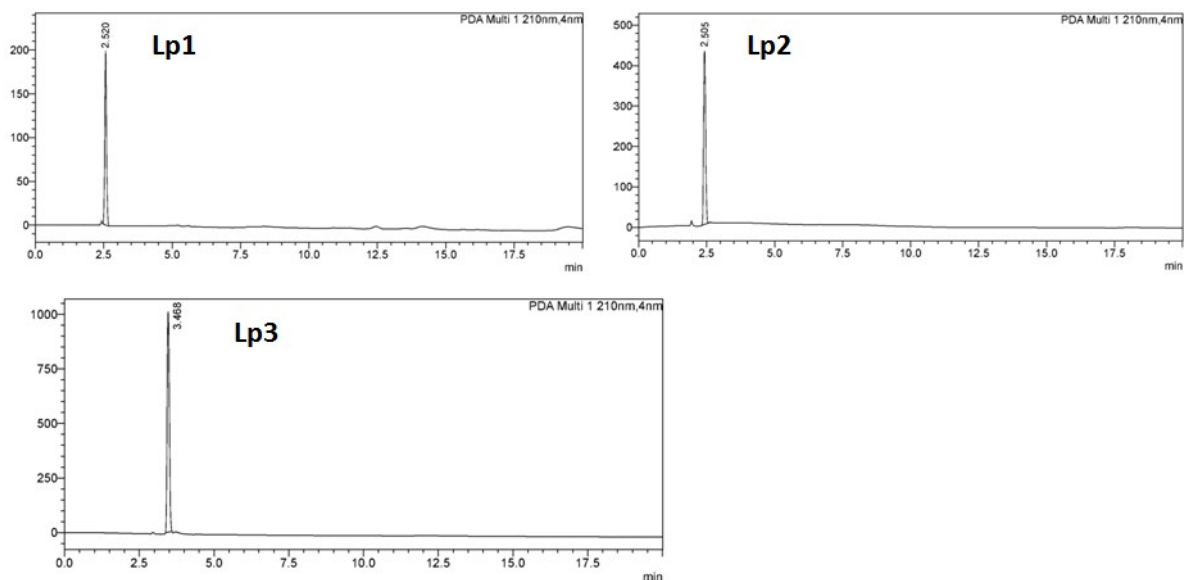


Figure X. RP-HPLC Chromatograms for **Lp1, Lp2 & Lp3 lipids**) obtained using 100% methanol as mobile phase.

HPLC Conditions:

System:	Shimadzu Lab Solutions
Column:	Microsorb® 100, RP-18e (10 µm), 125 x 4 mm
Mobile Phase:	100% Methanol.
Flow Rate:	1.0 mL/min
Typical Column Pressure:	50-55 Bars
Detection:	UV at 263 nm