

Supporting Information

Rh(III)-Catalyzed Regioselective Mono- and Di-iodination of Azobenzenes Using Alkyl Iodide

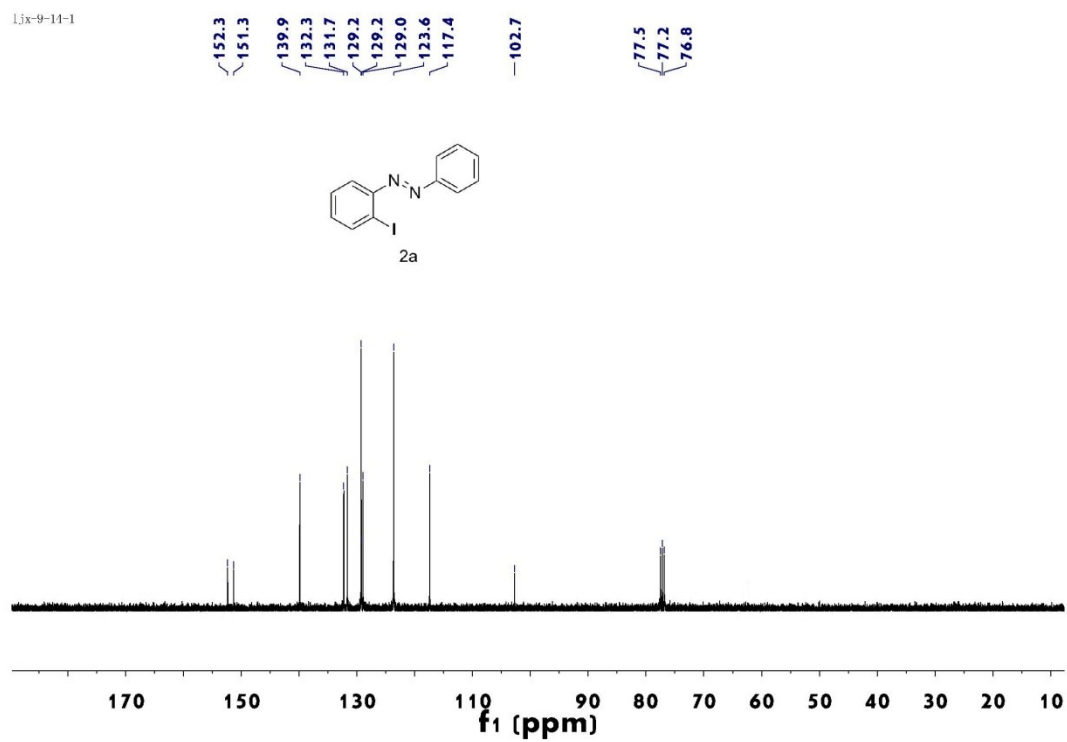
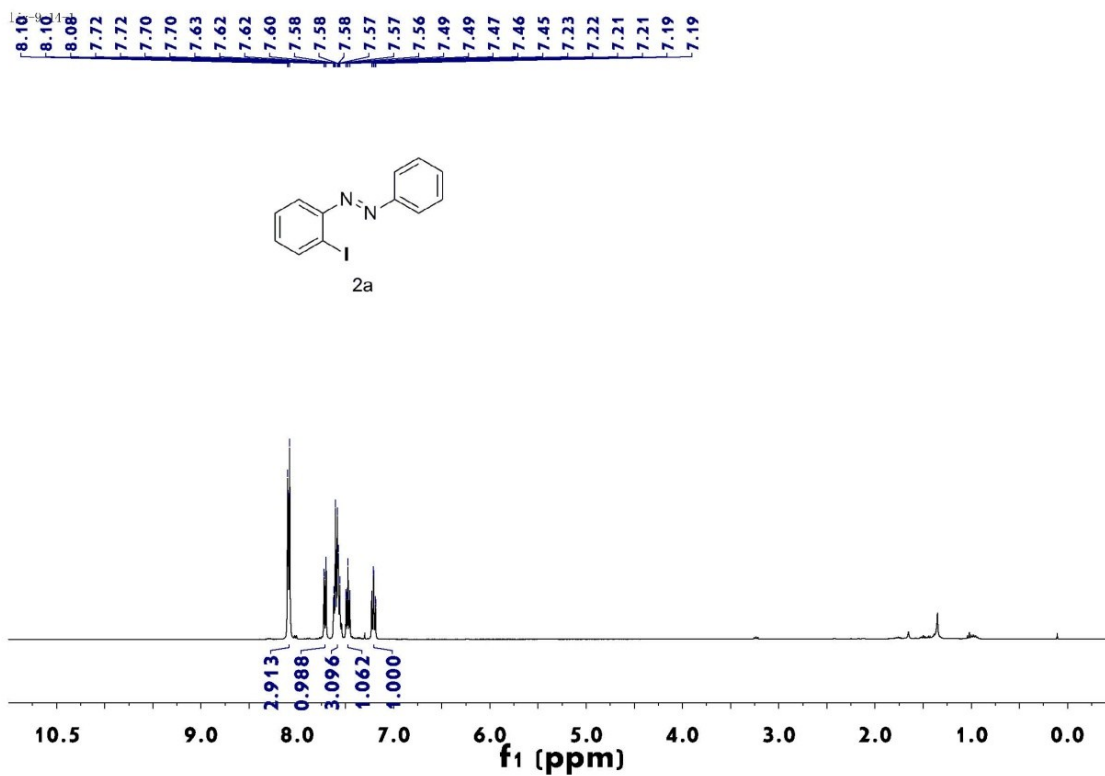
Jixing Li,^{*a} Wenxia Cong,^a Zeng Gao,^{b,c} Jinlong Zhang,^b Huameng Yang,^b and Gaoxi Jiang^{*b}

^a School of Chemistry & Chemical Engineering, Linyi University, Linyi 276005, P. R. China

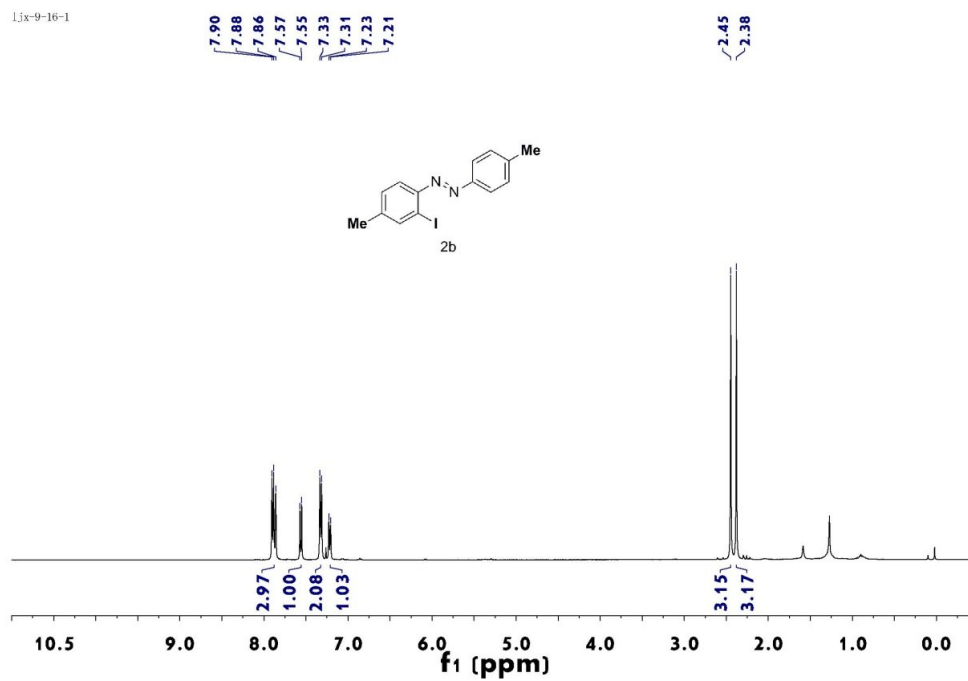
^b State Key Laboratory for Oxo Synthesis and Selective Oxidation, Center for Excellence in Molecular Synthesis, Suzhou Research Institute of LICP, Lanzhou Institute of Chemical Physics (LICP), Chinese Academy of Sciences, Lanzhou 730000, P. R. China

^c University of Chinese Academy of Sciences, Beijing 100049, P. R. China

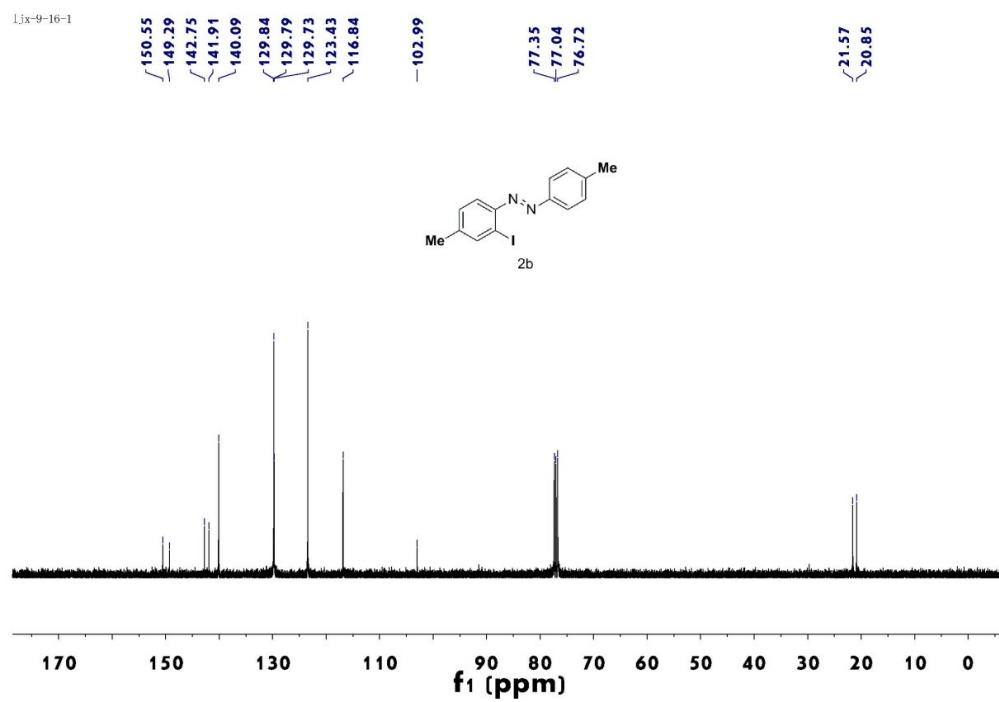
¹H and ¹³C NMR spectra for compounds



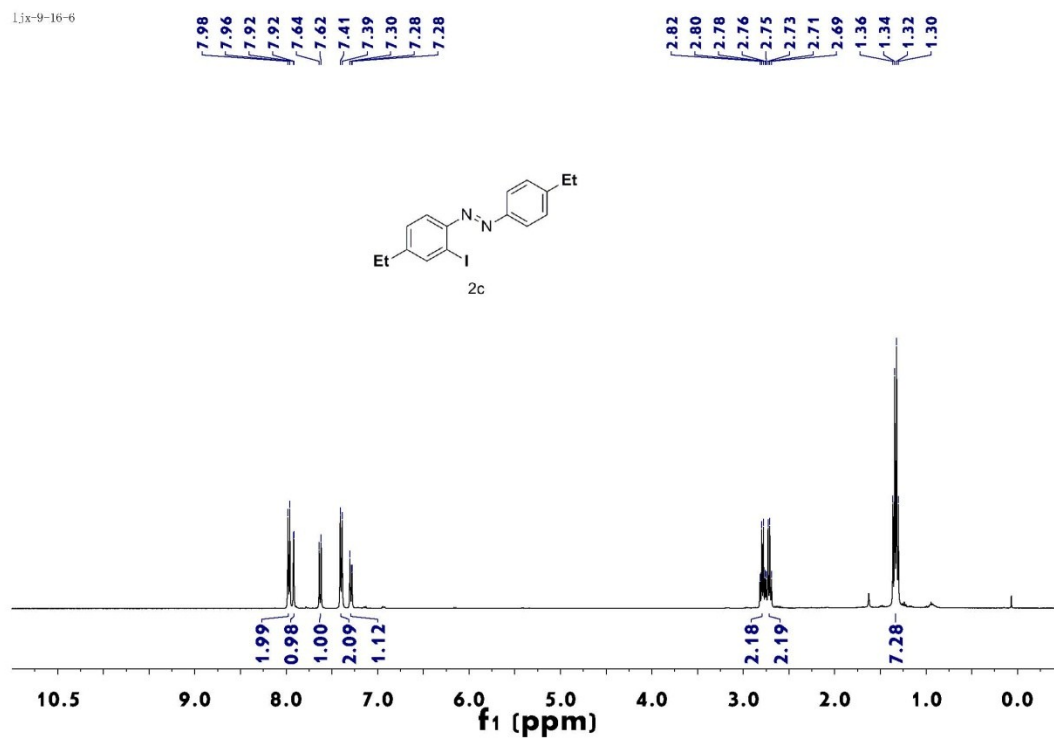
ljx-9-16-1



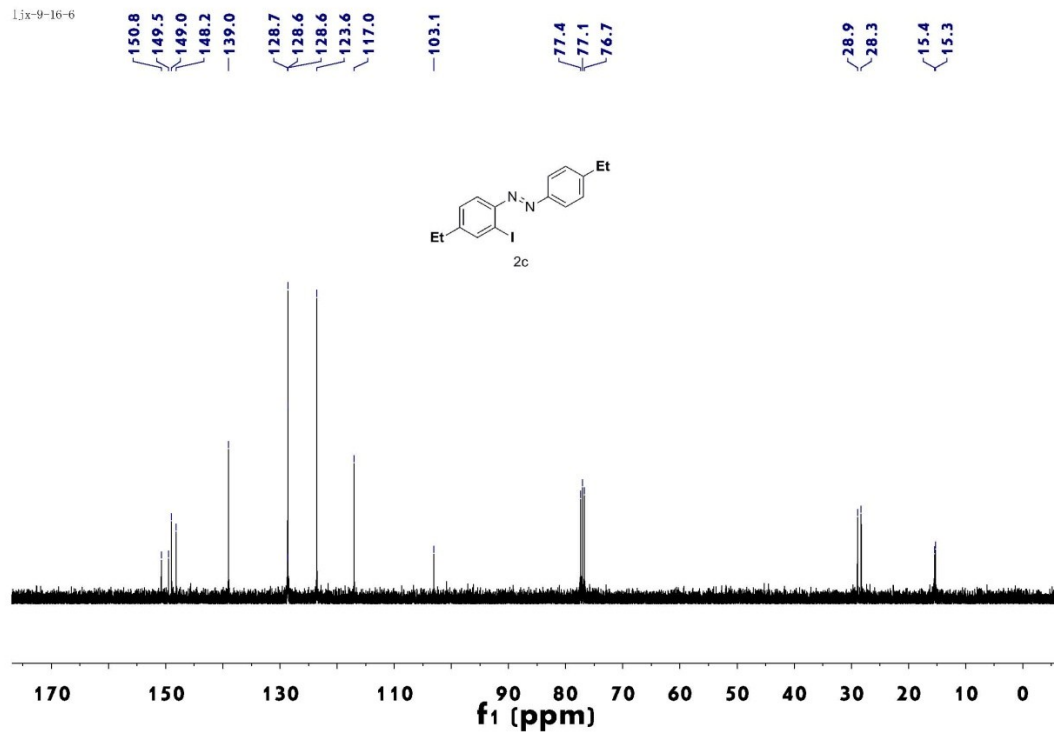
ljx-9-16-1



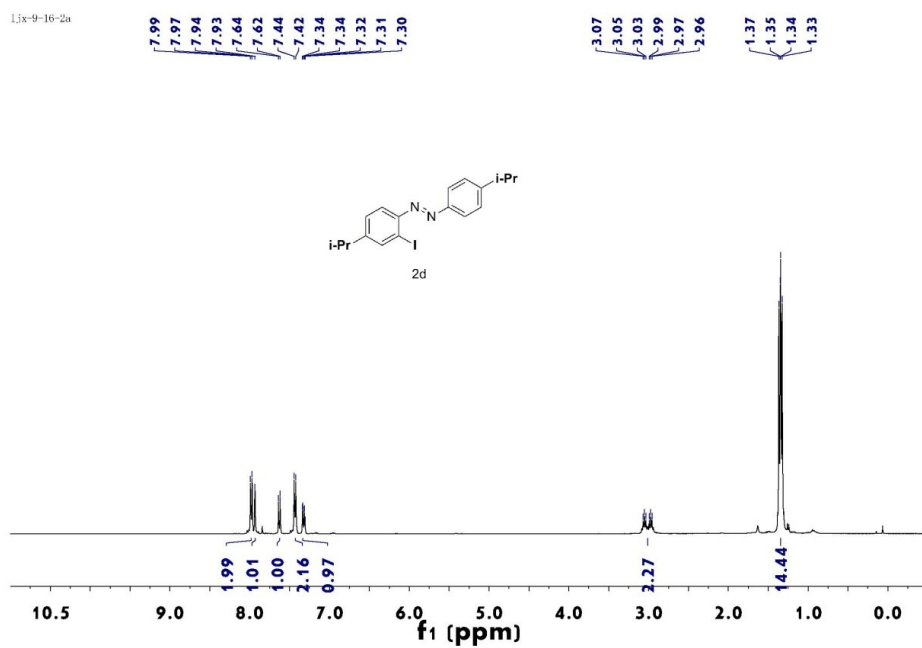
ljx-9-16-6



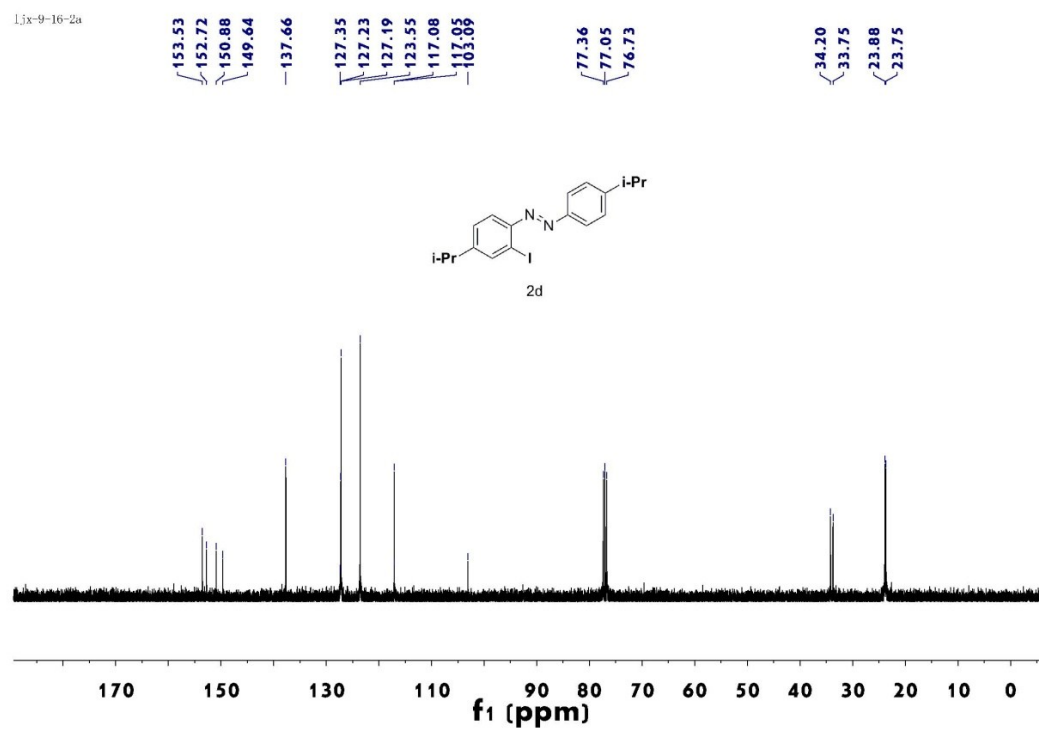
ljx-9-16-6



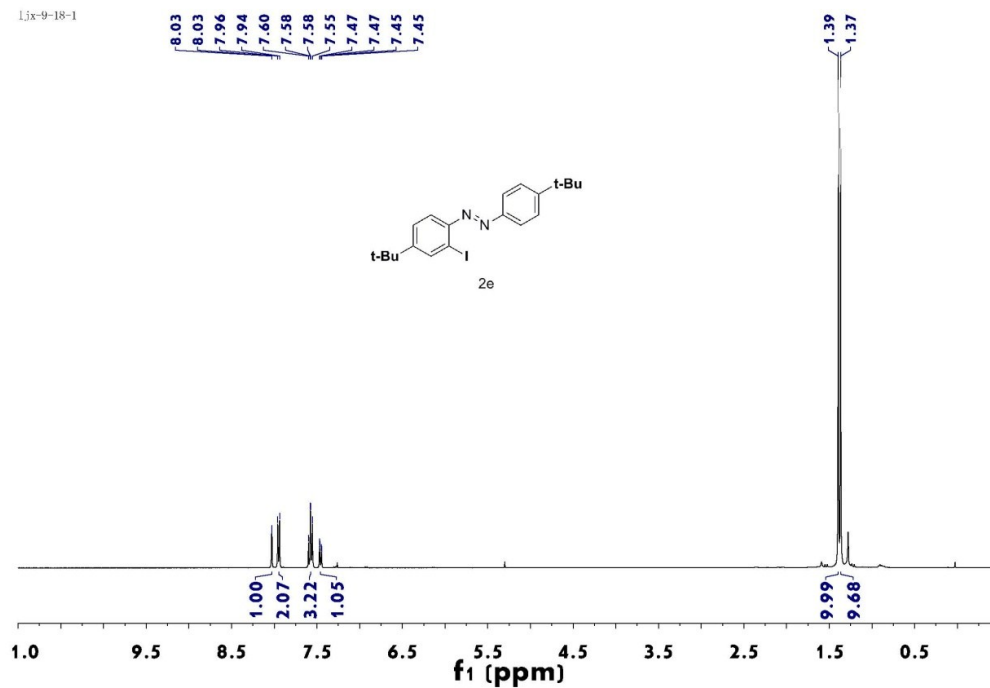
Lix-9-16-2a



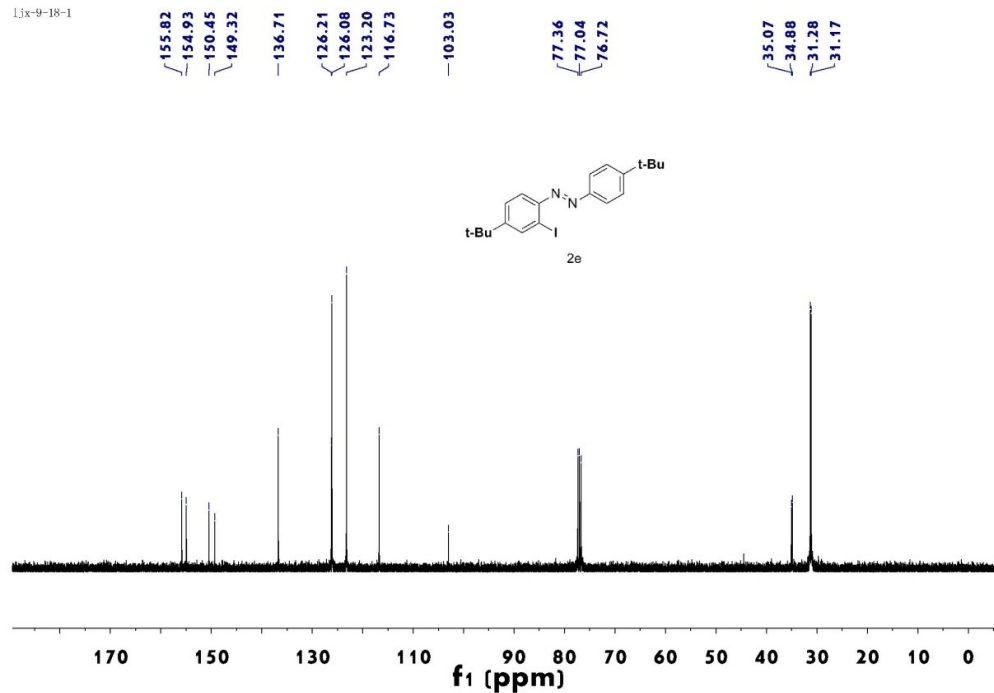
Lix-9-16-2a



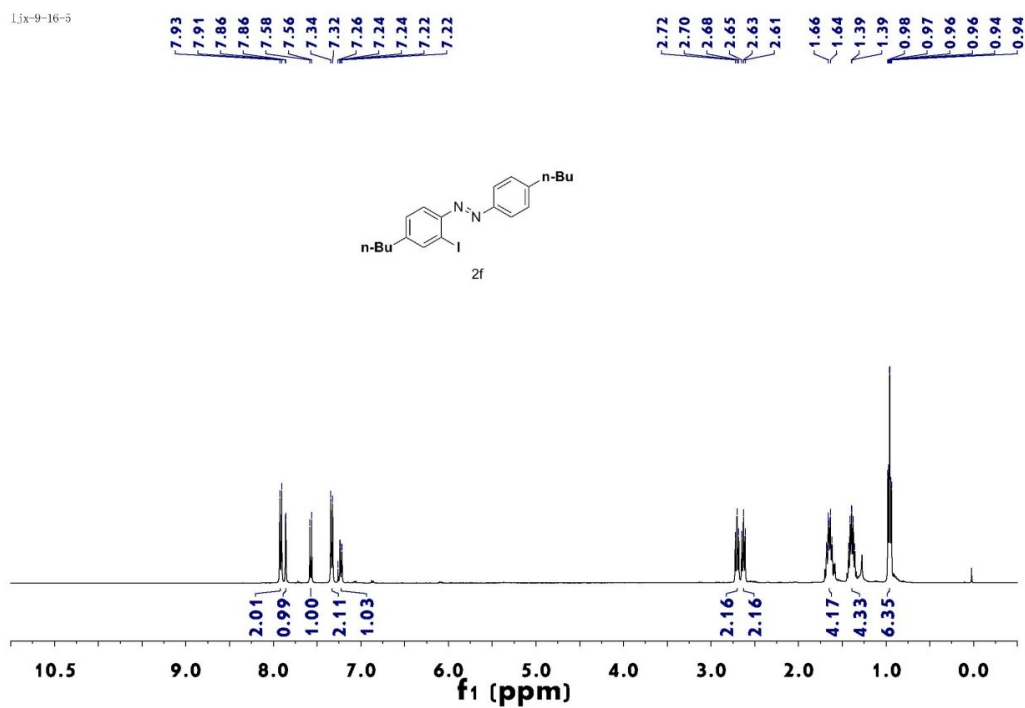
l.jx-9-18-1



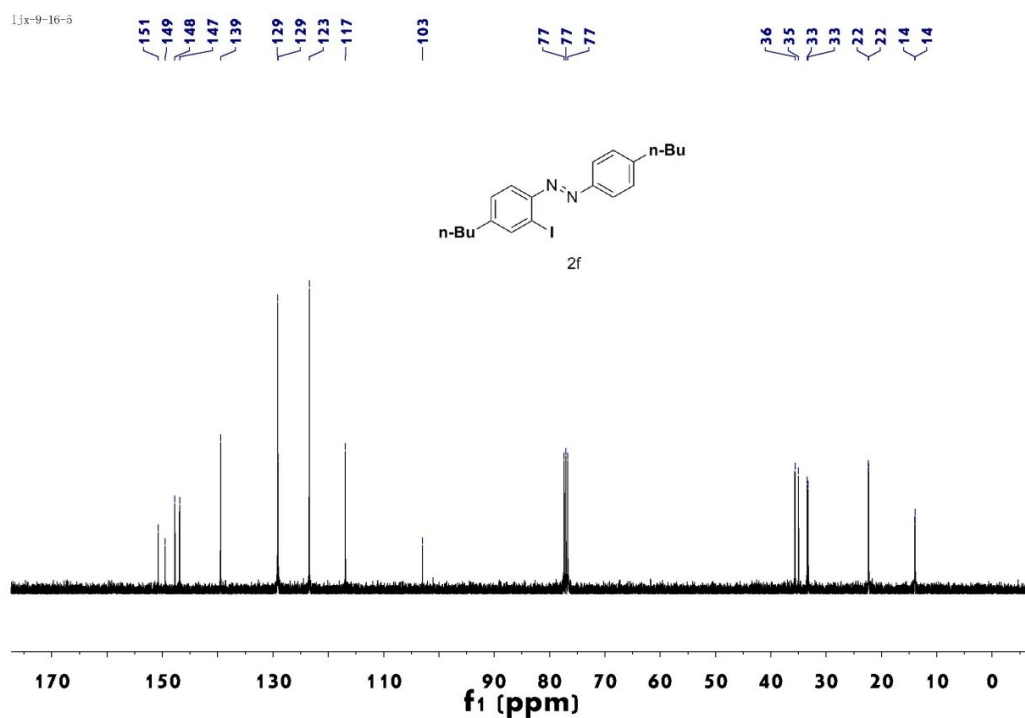
l.jx-9-18-1



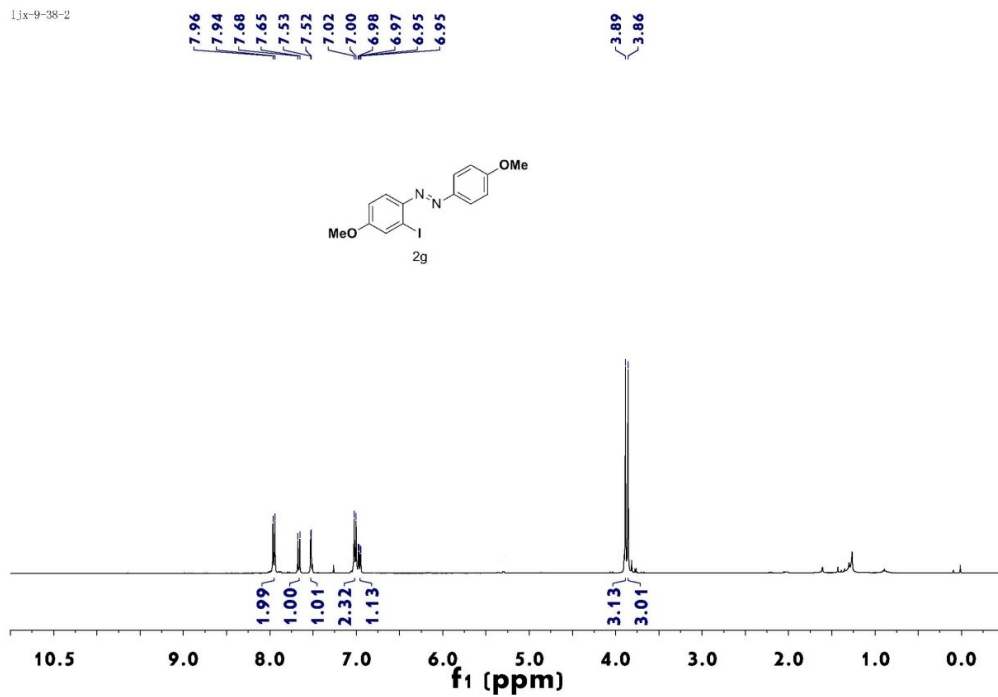
1jx-9-16-5



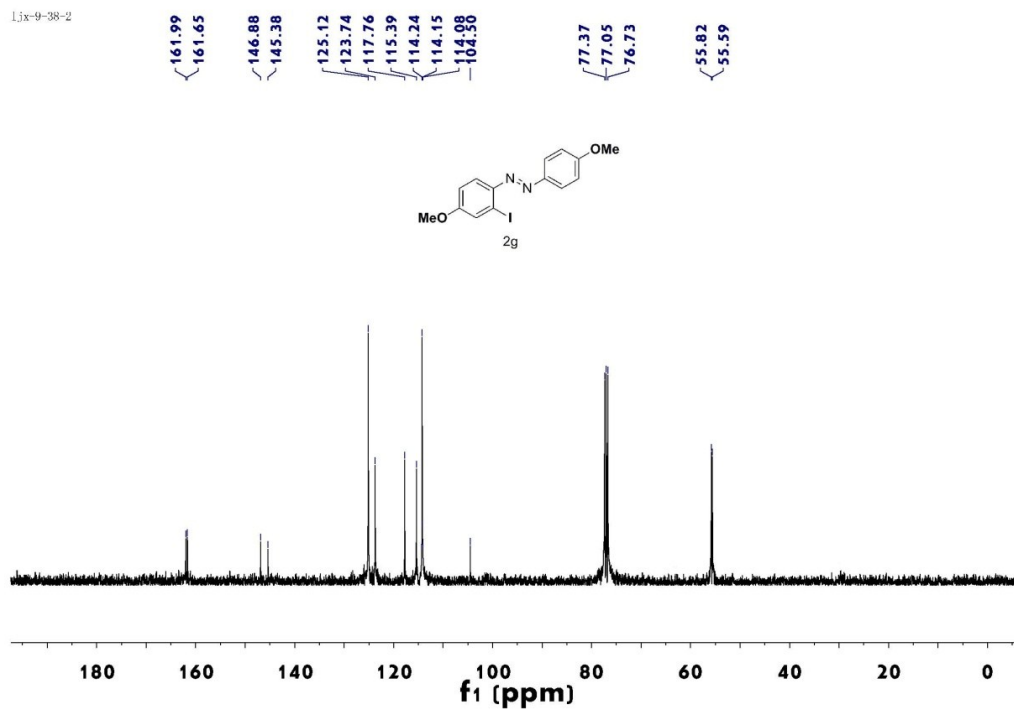
1jx-9-16-5

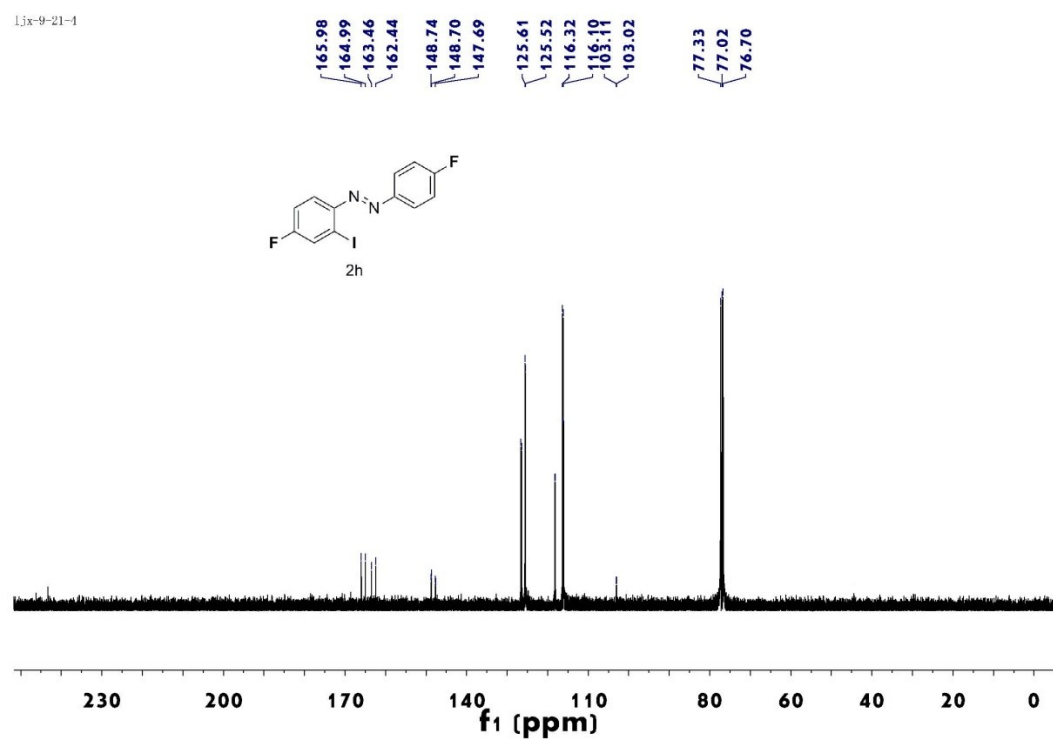
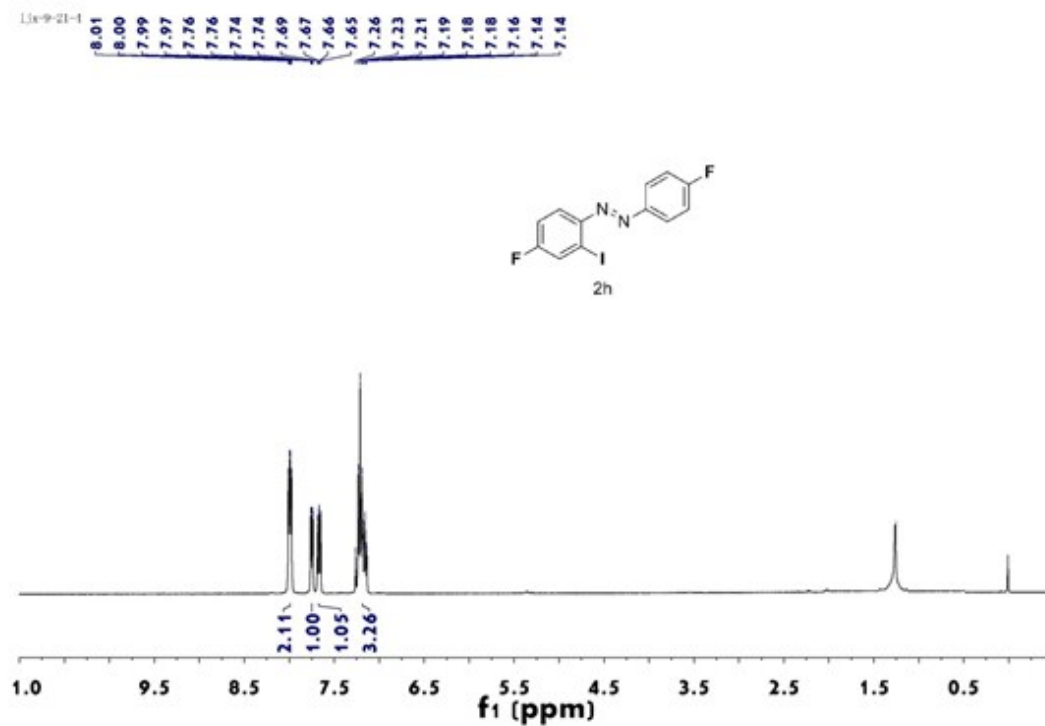


ljx-9-38-2

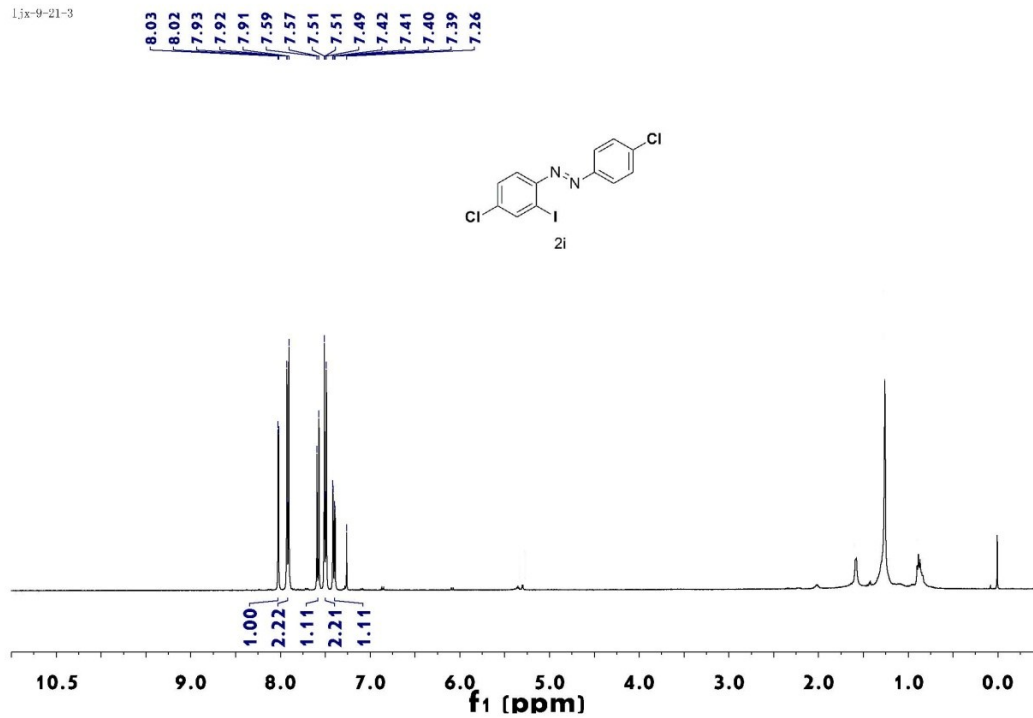


ljx-9-38-2

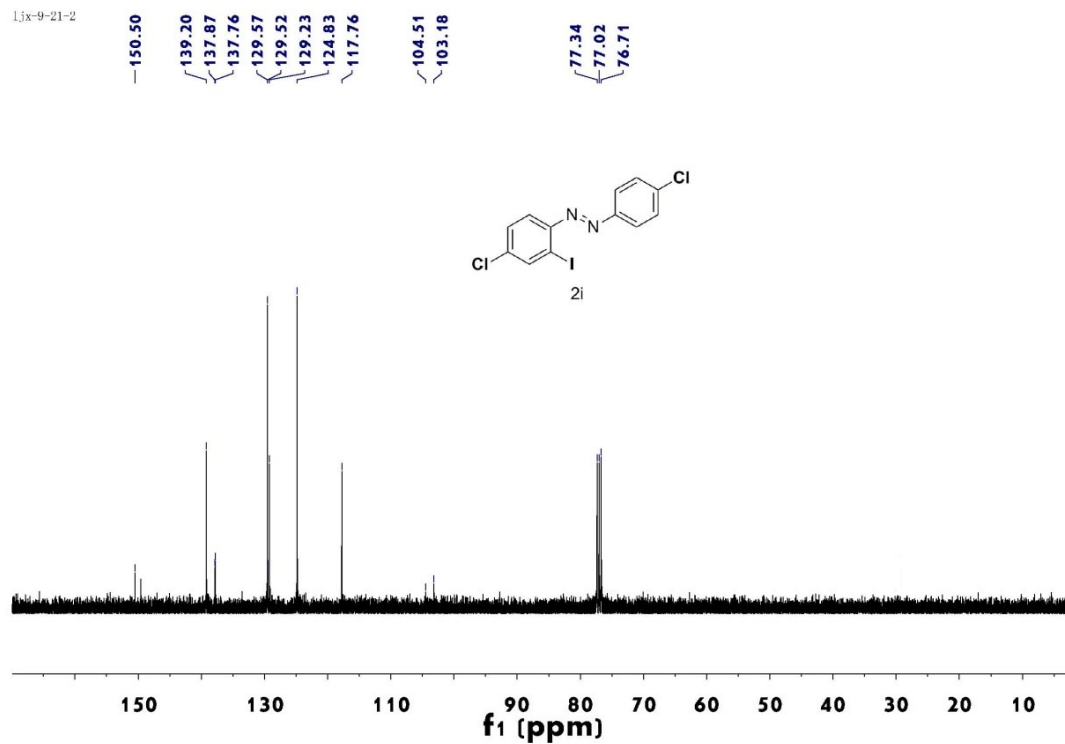




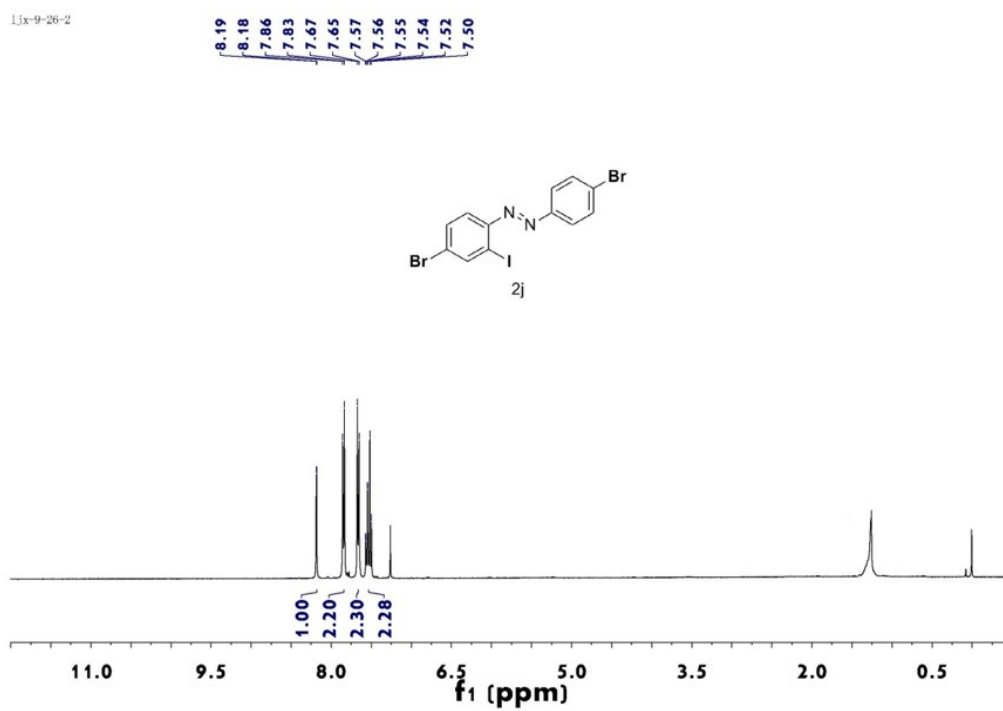
ljx-9-21-3



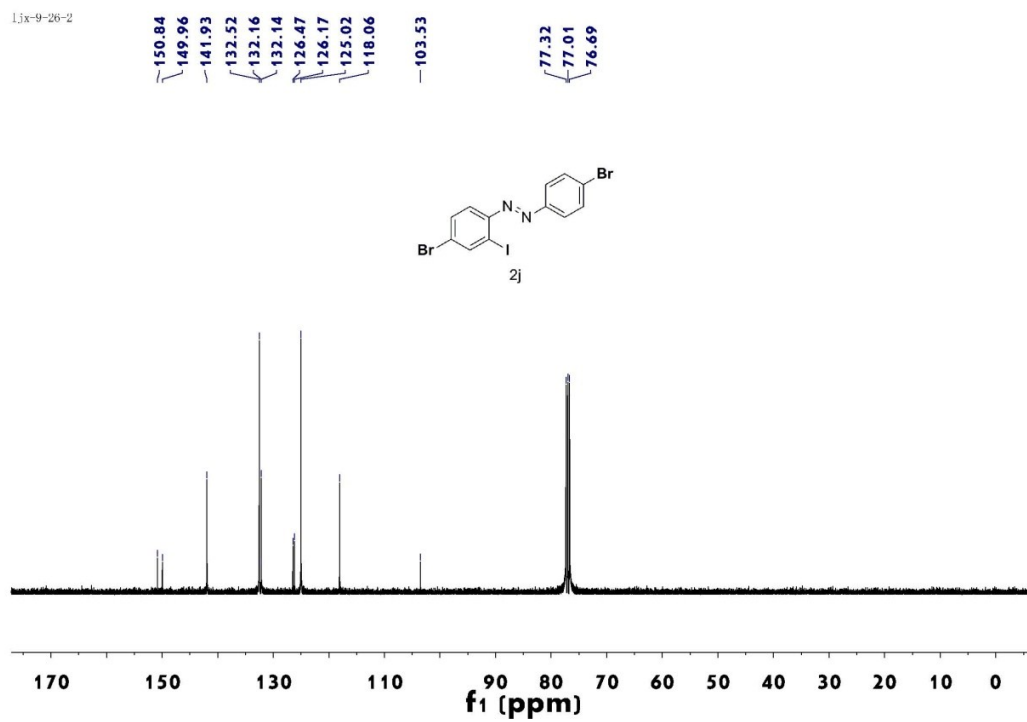
ljx-9-21-2



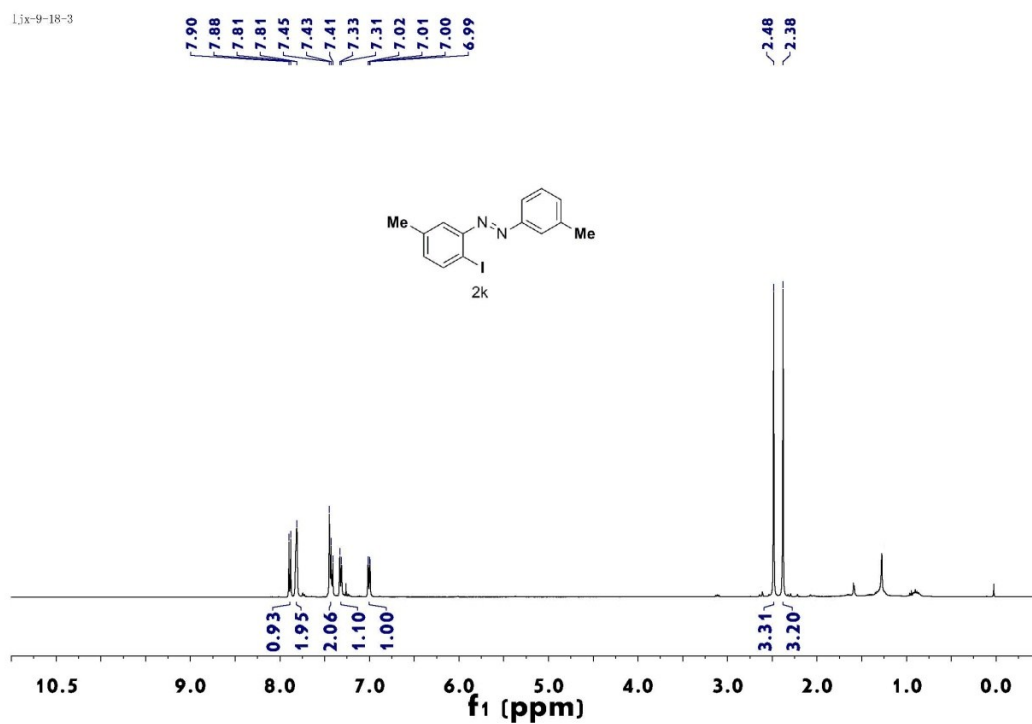
ljx-9-26-2



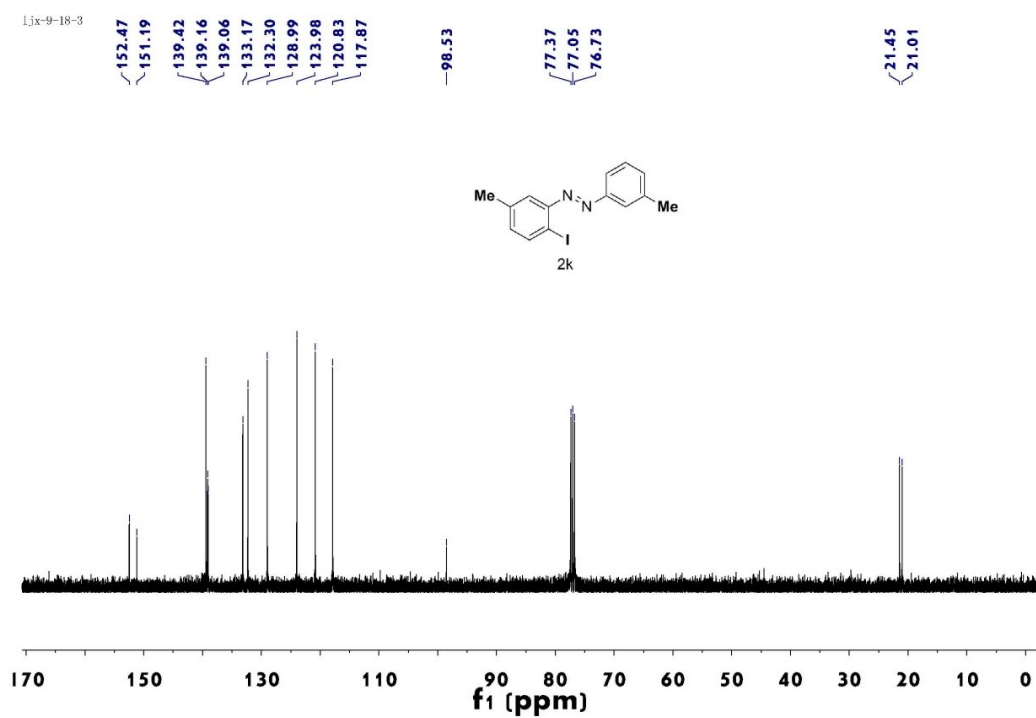
ljx-9-26-2



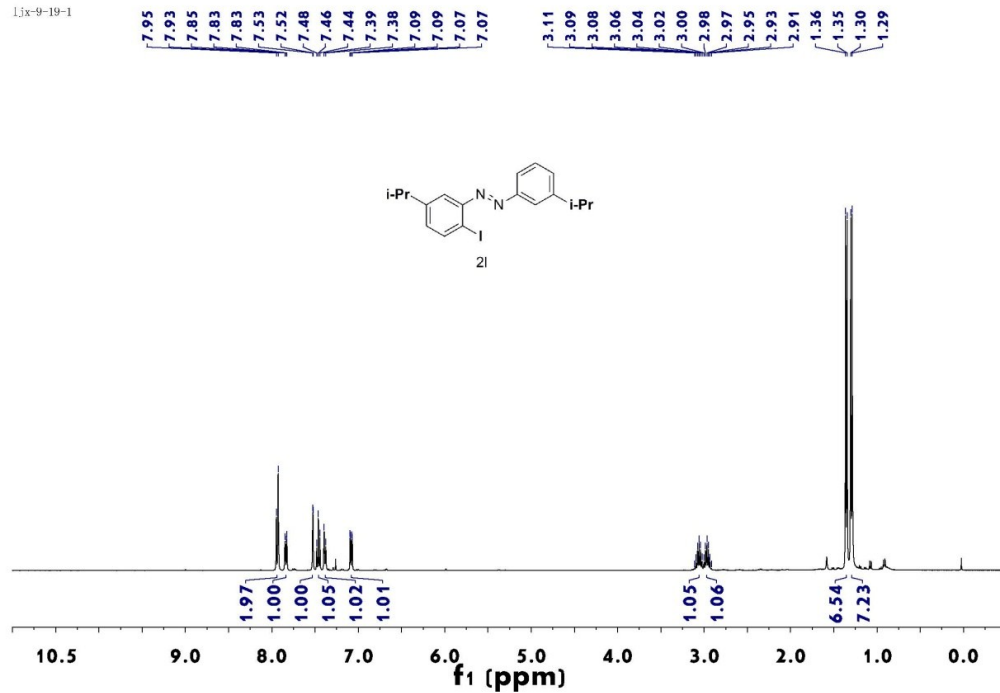
ljx-9-18-3



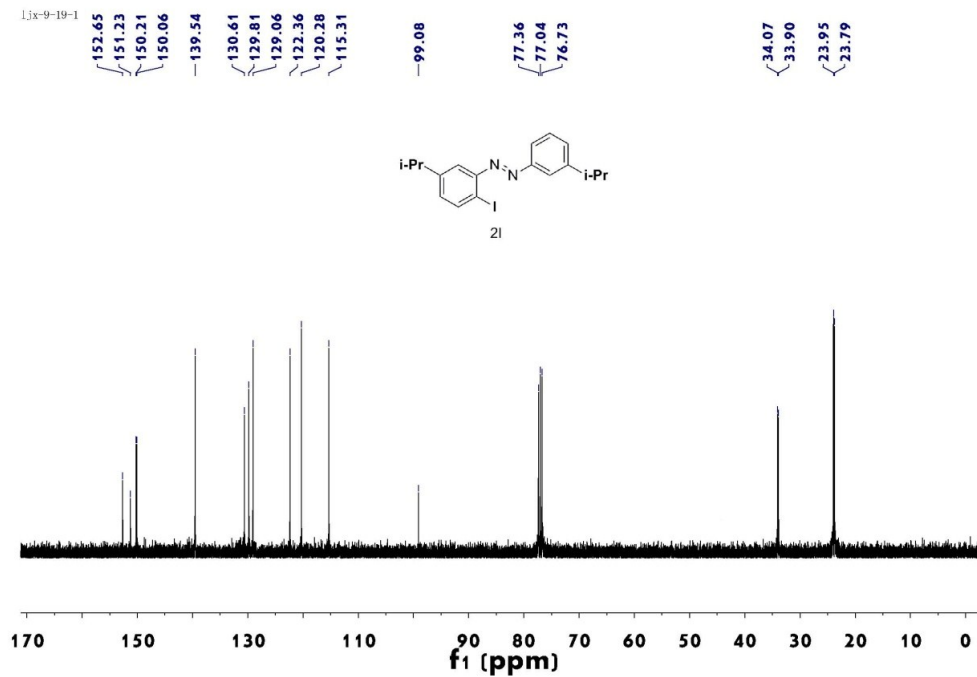
ljx-9-18-3



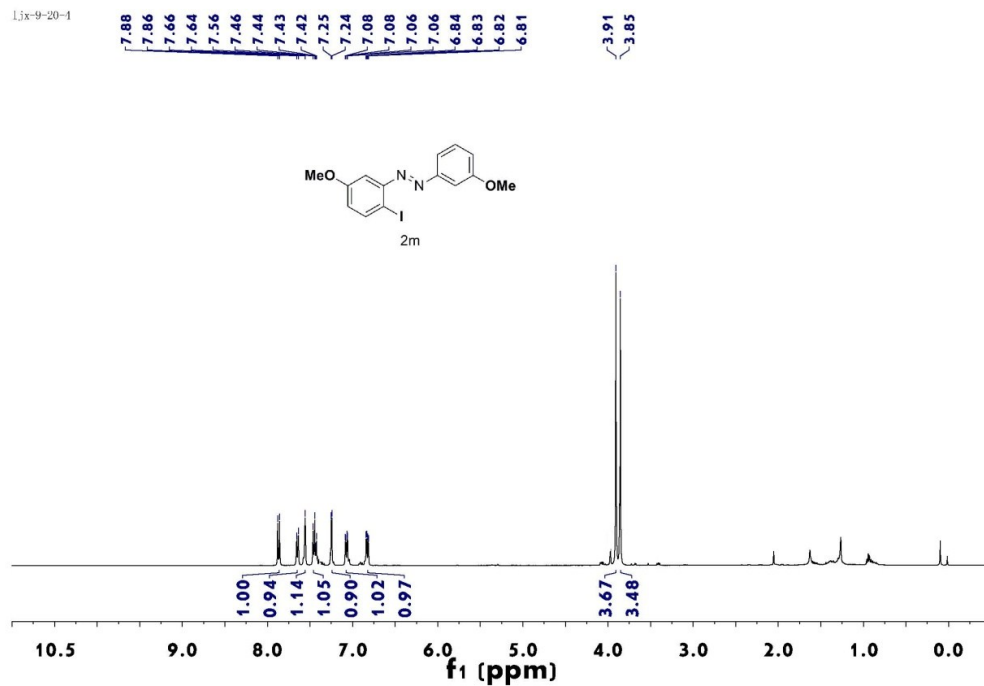
ljx-9-19-1



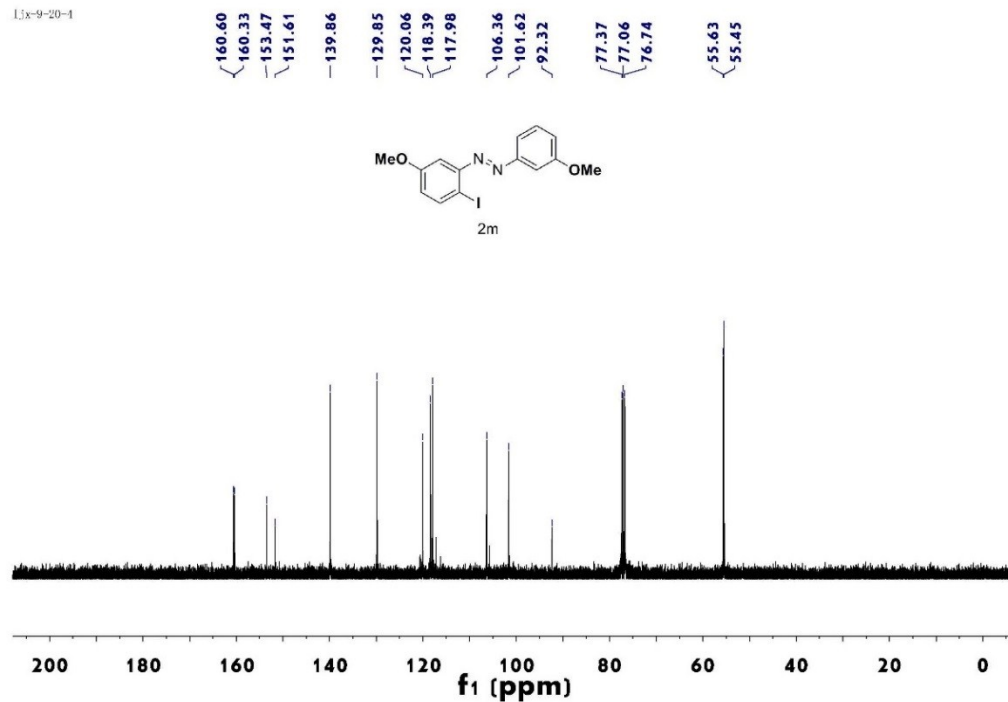
ljx-9-19-1



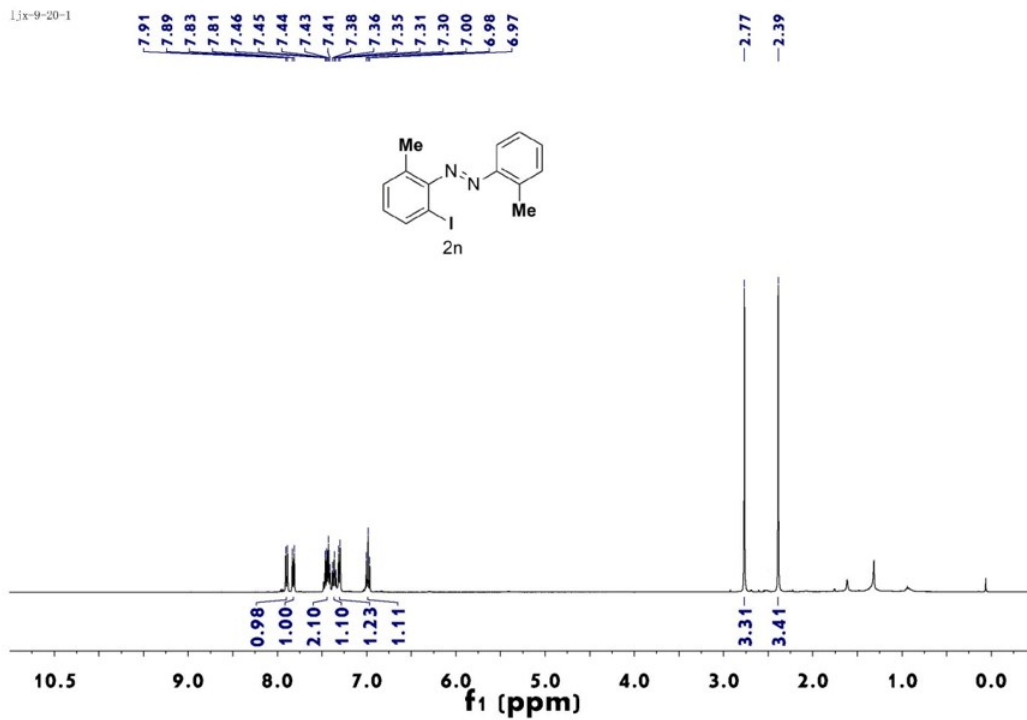
lix-9-20-1



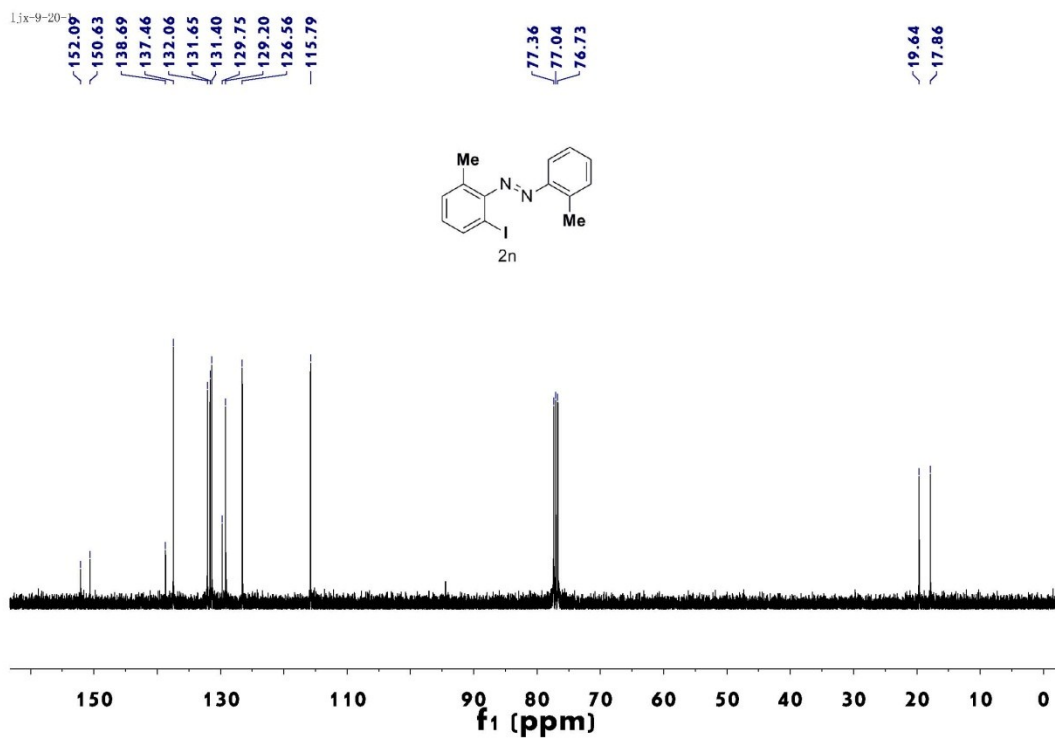
lix-9-20-1



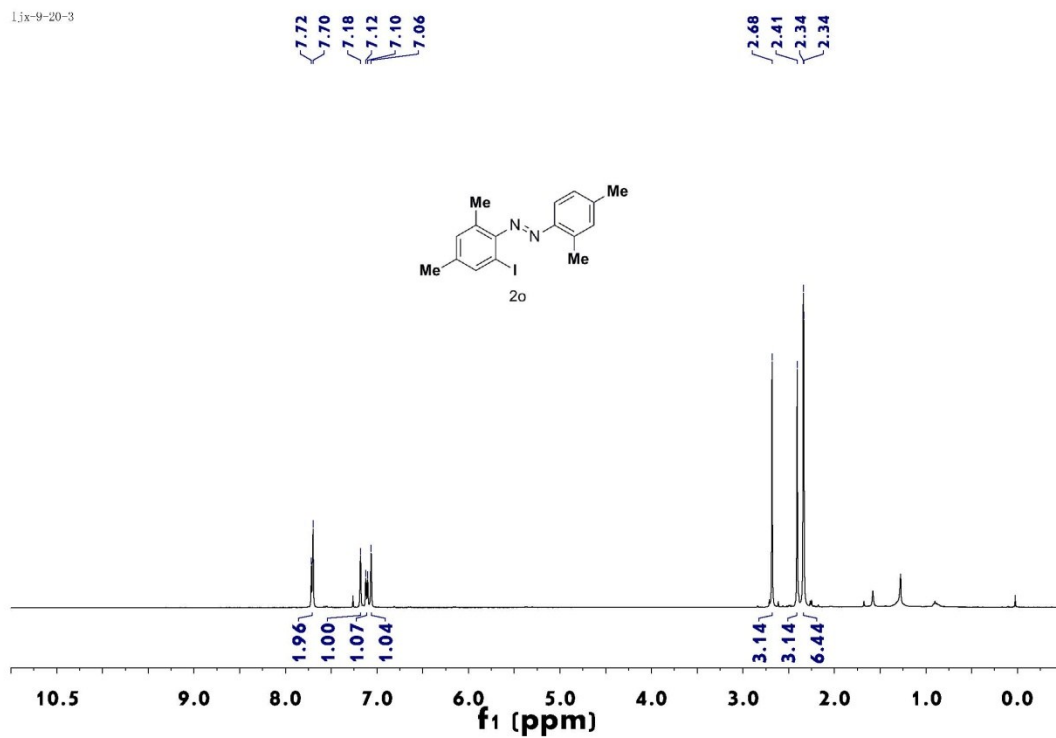
ljx-9-20-1



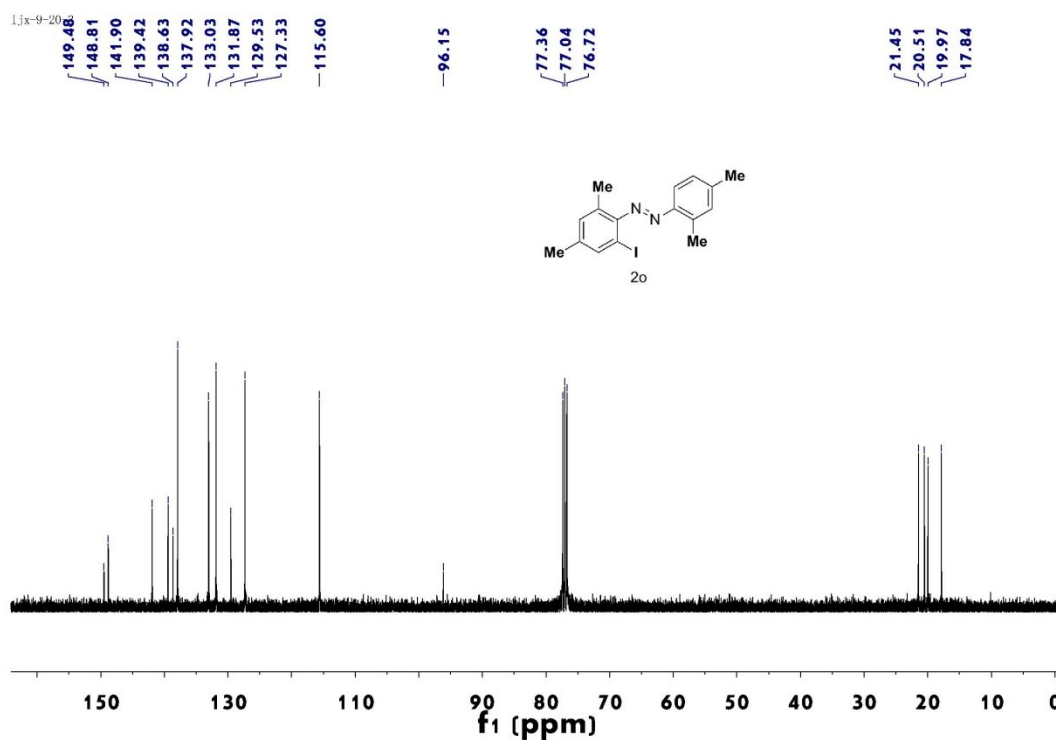
ljx-9-20-



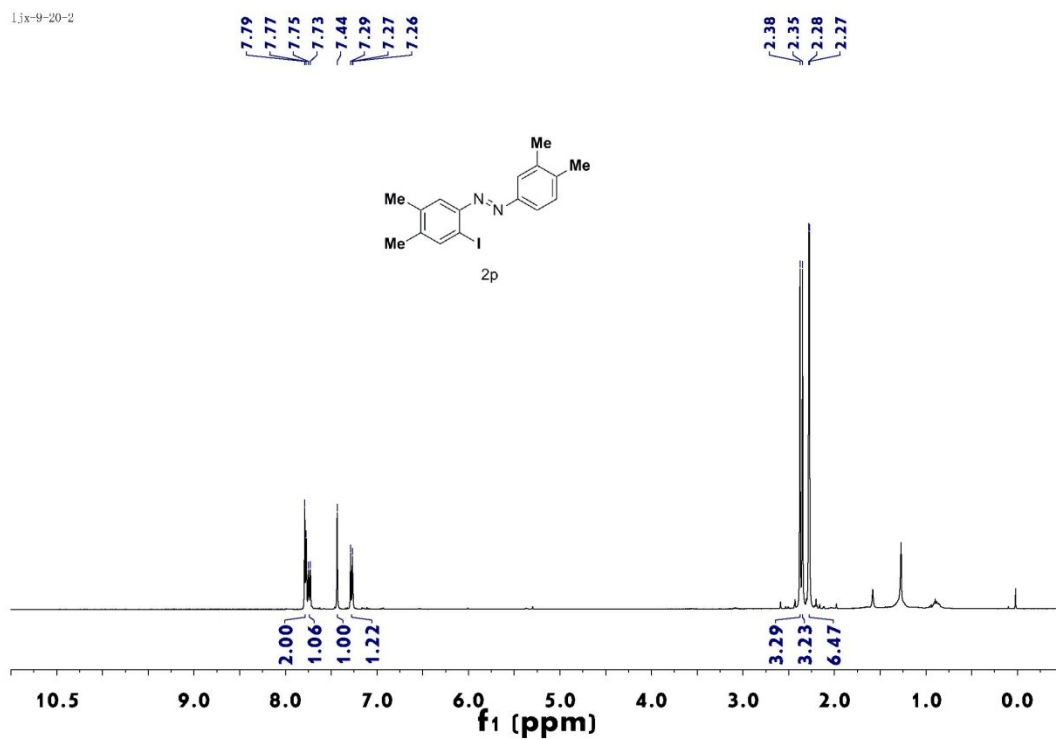
ljx-9-20-3



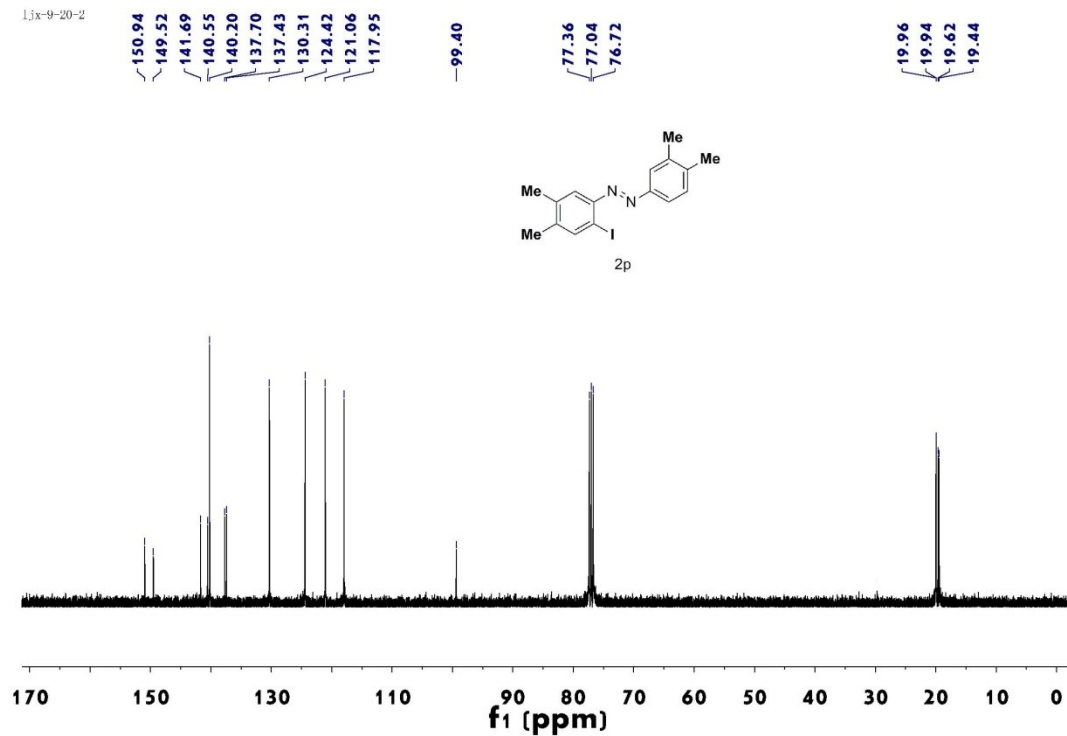
ljx-9-20

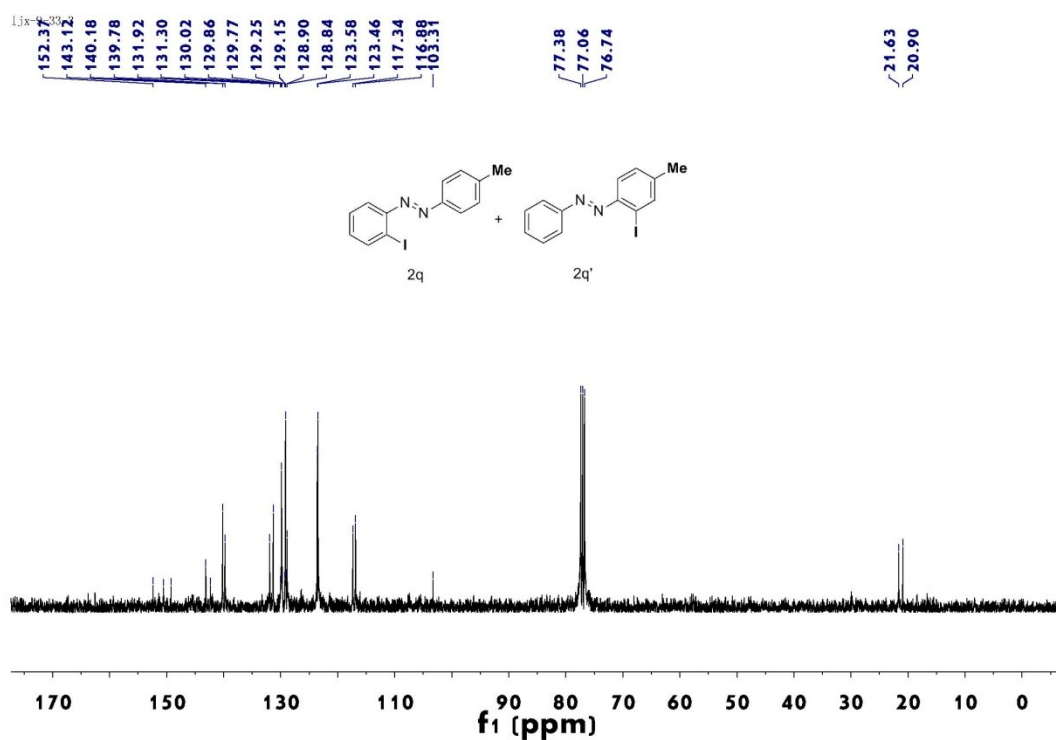
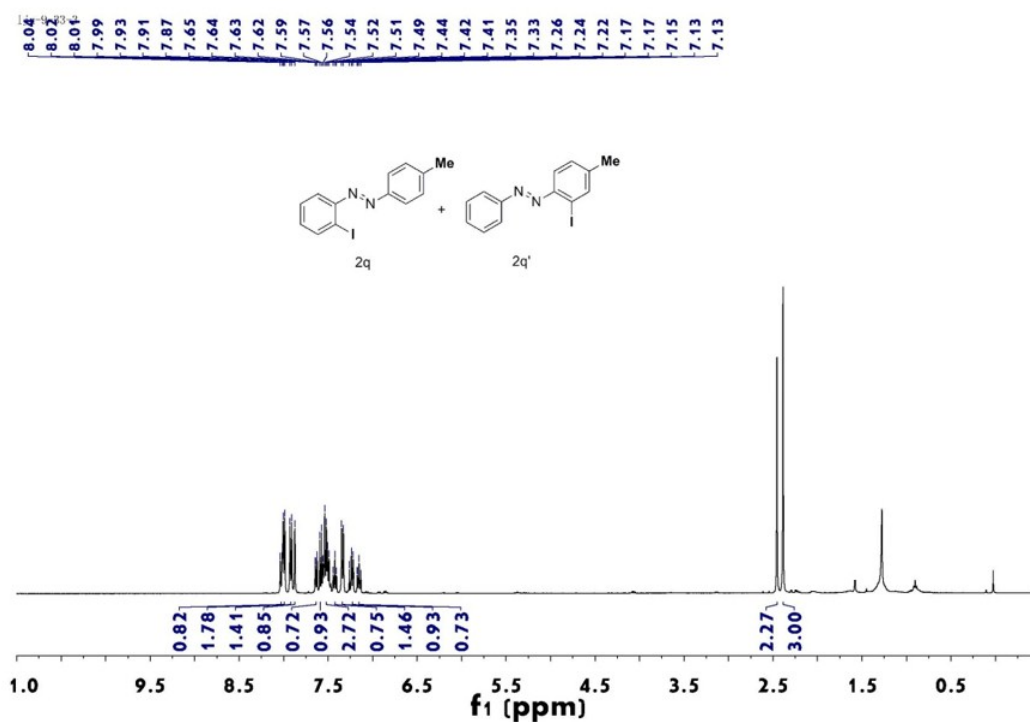


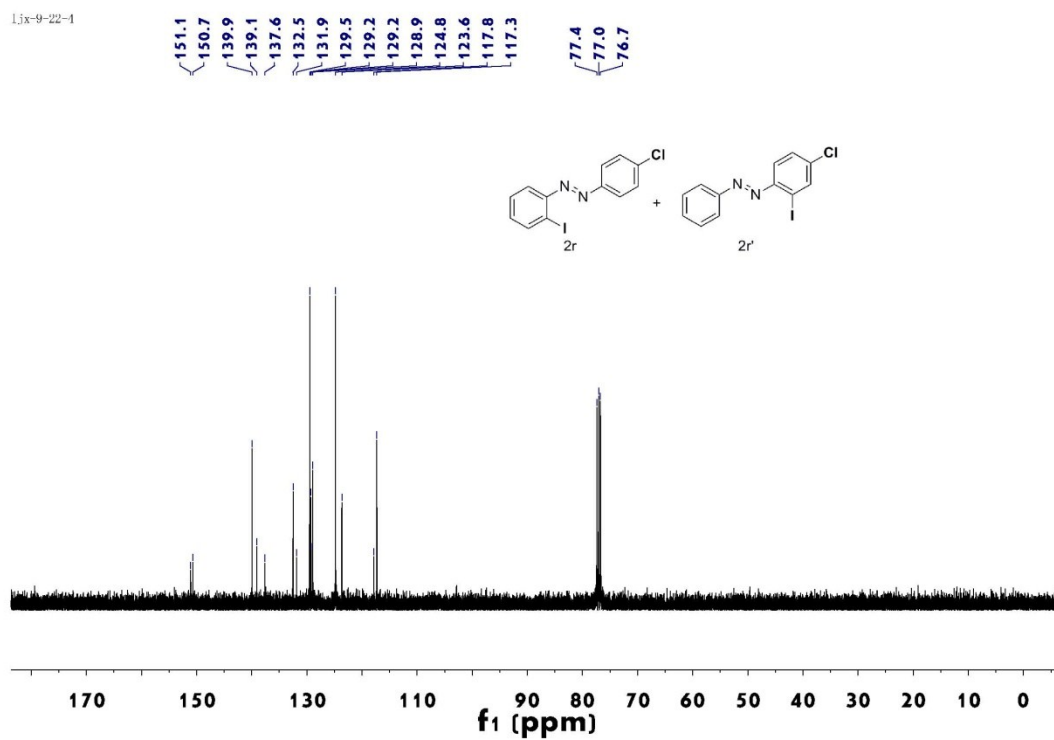
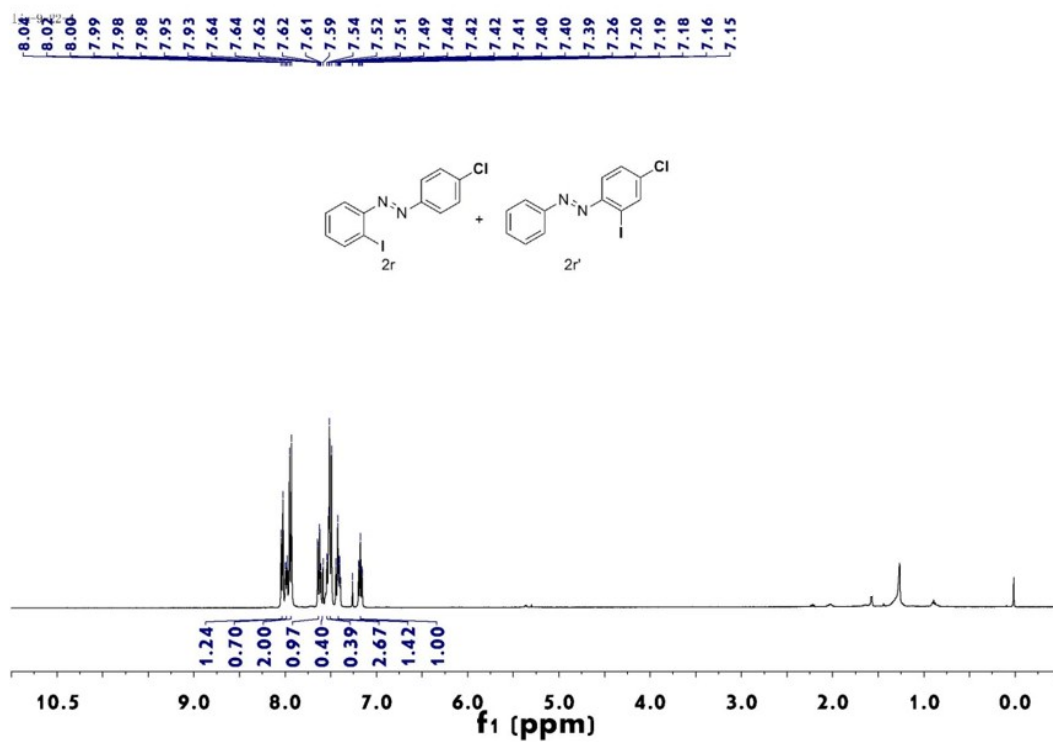
ljx-9-20-2

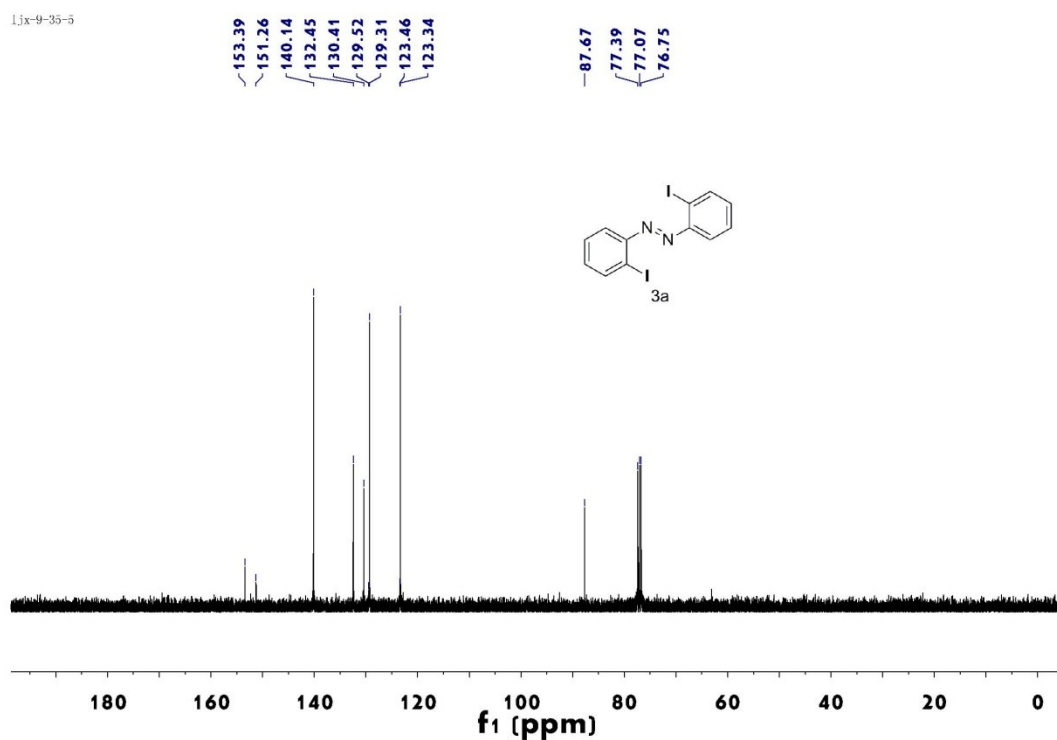
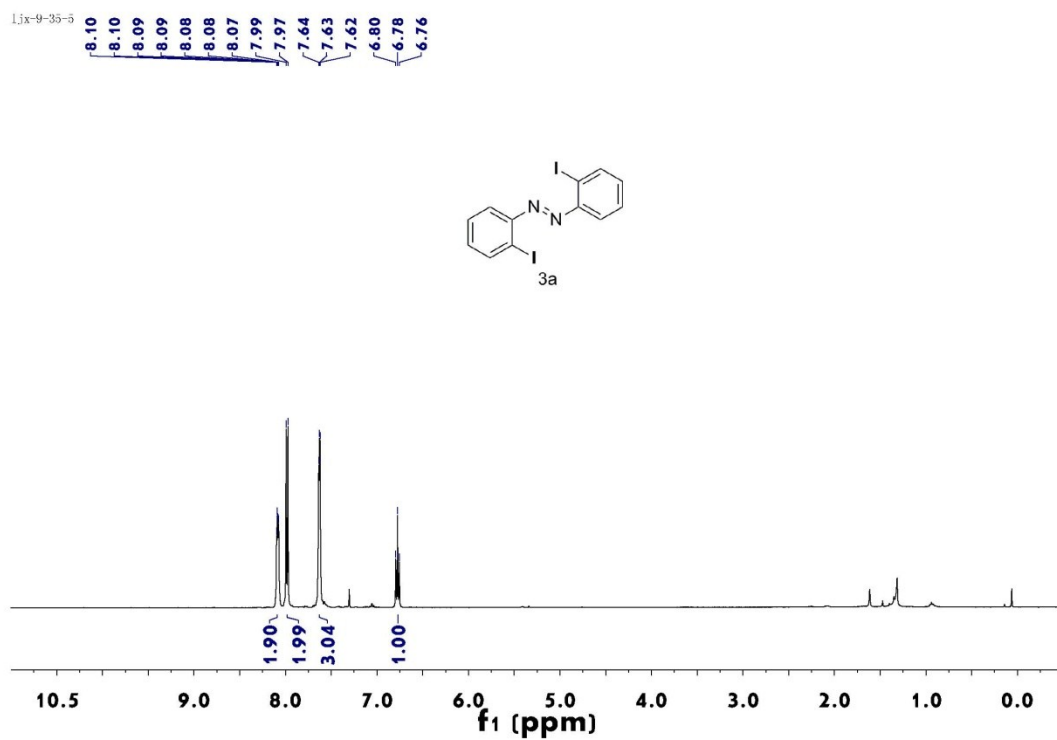


ljx-9-20-2

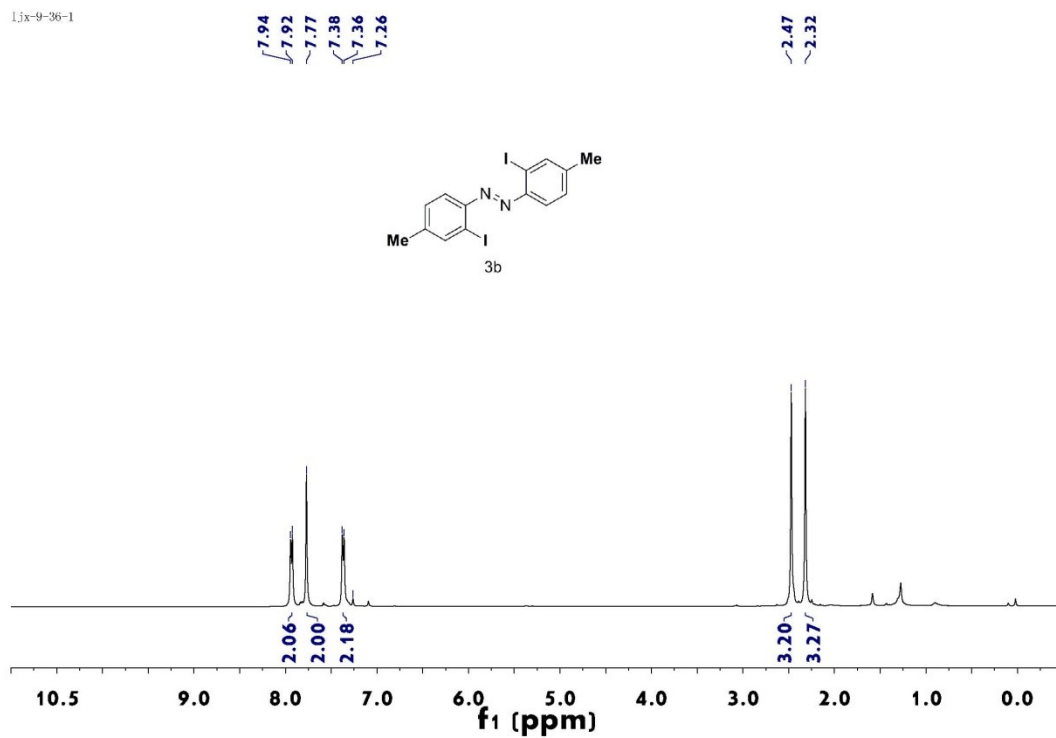




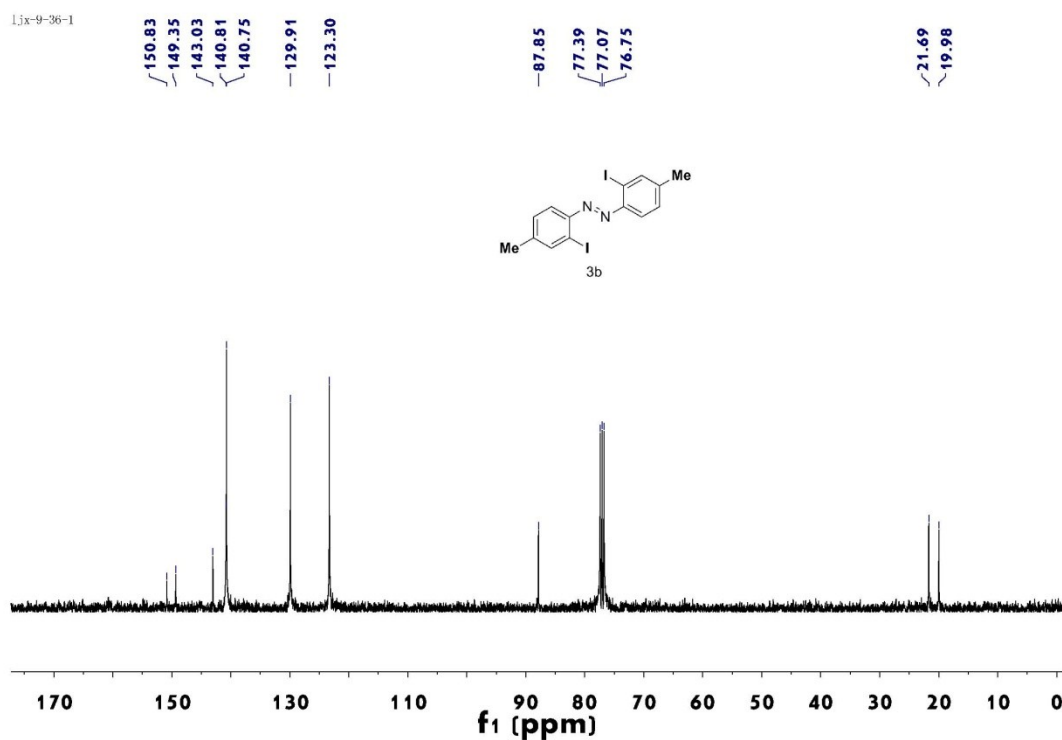




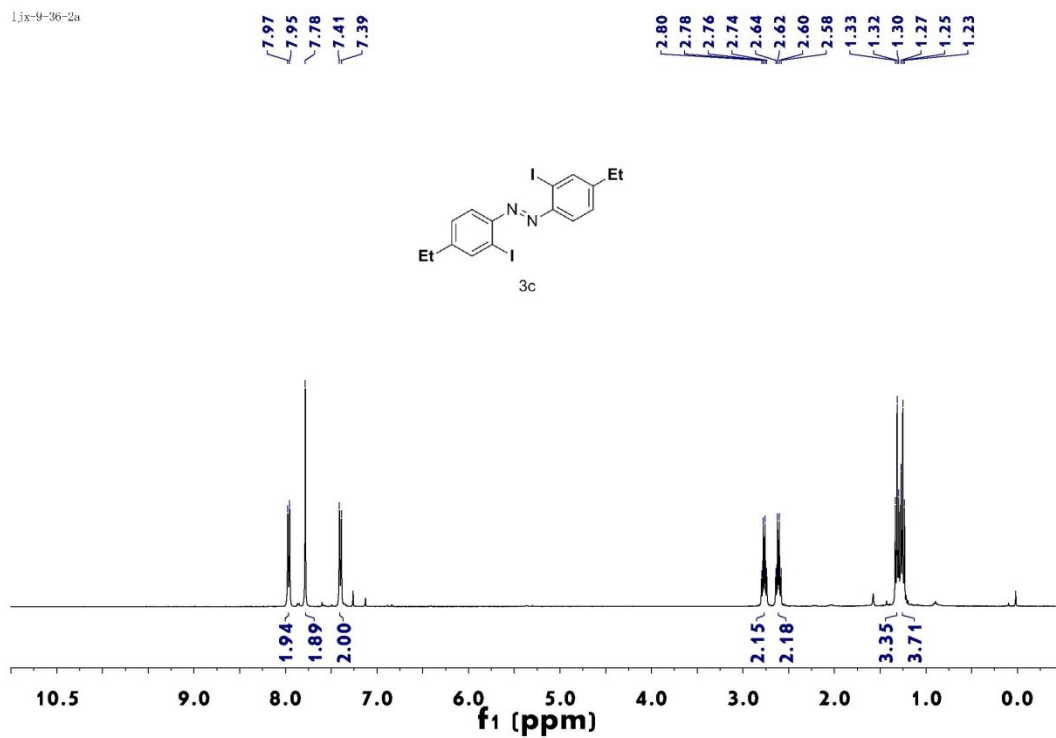
ljx-9-36-1



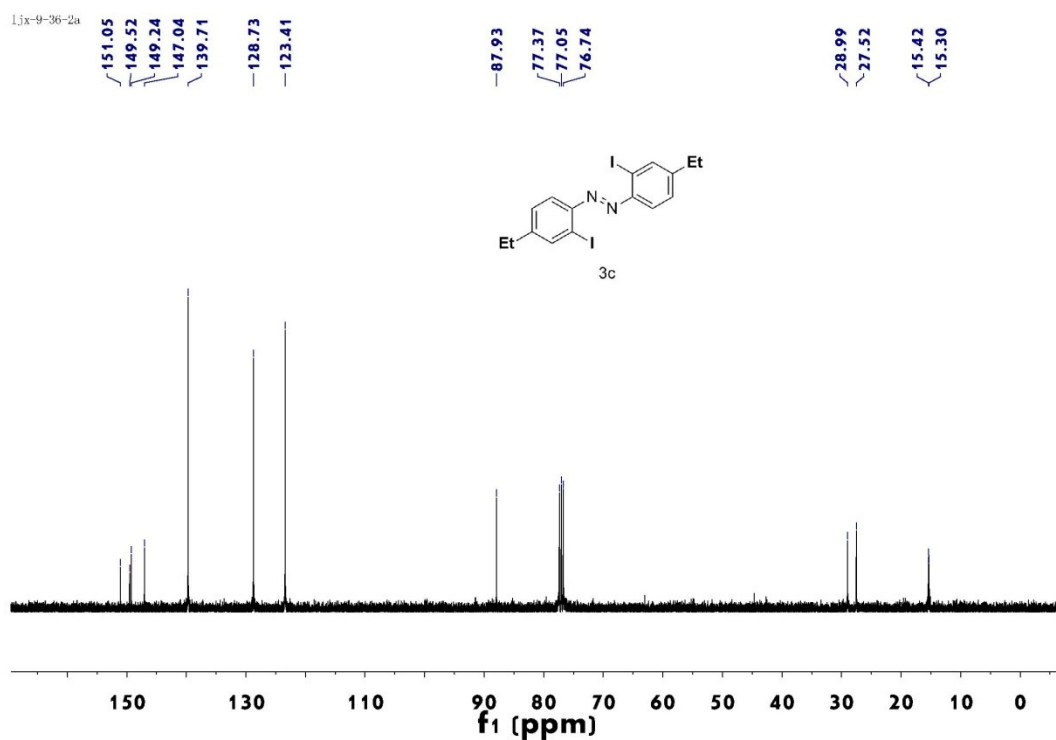
ljx-9-36-1



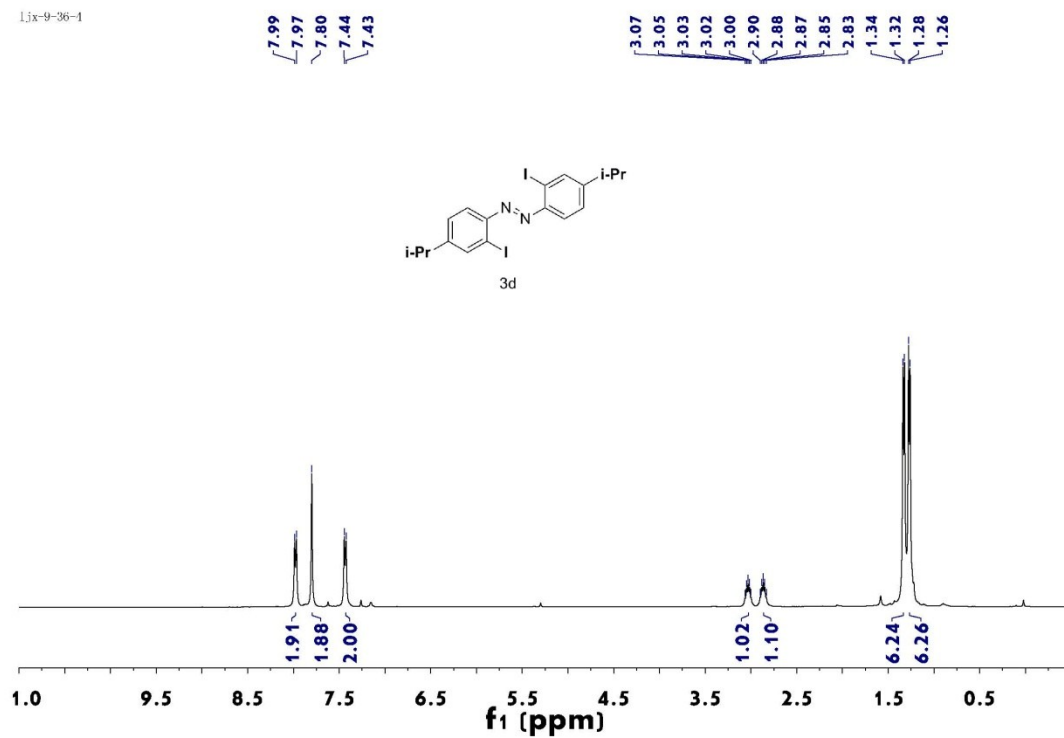
ljx-9-36-2a



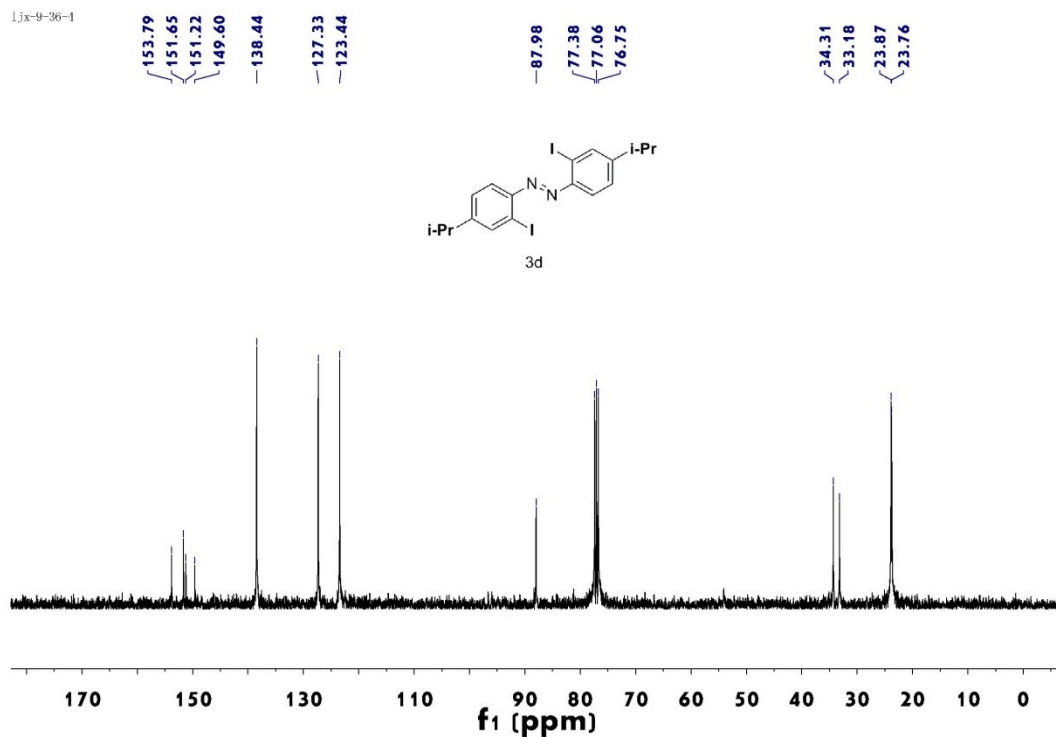
ljx-9-36-2a



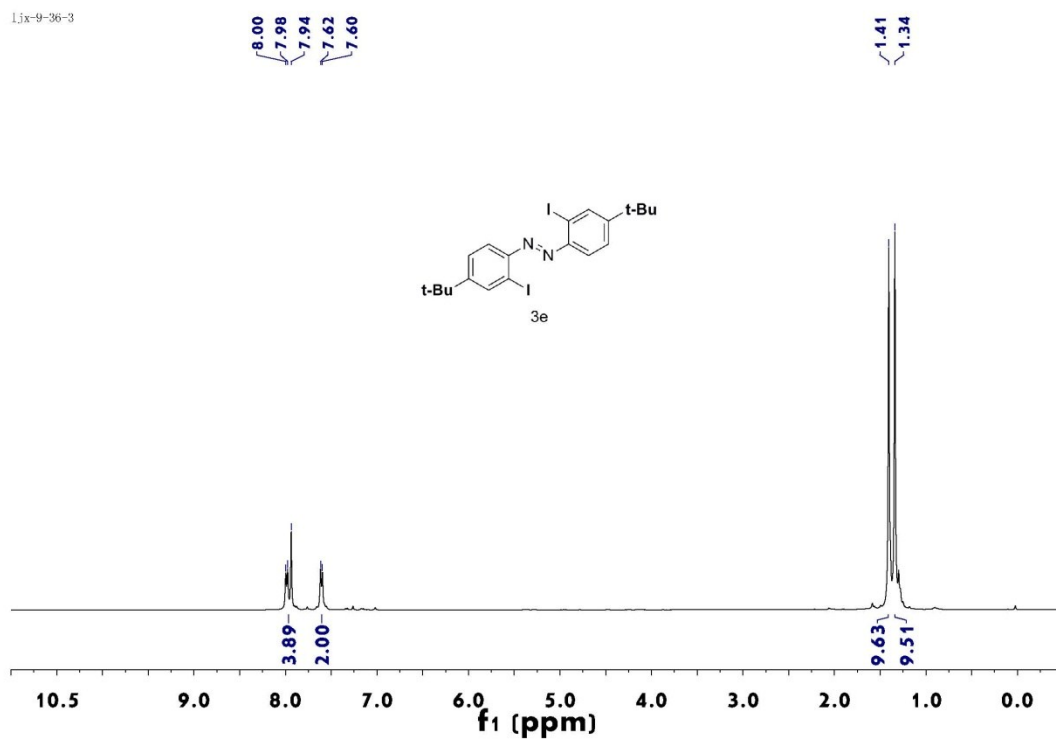
ljx-9-36-1



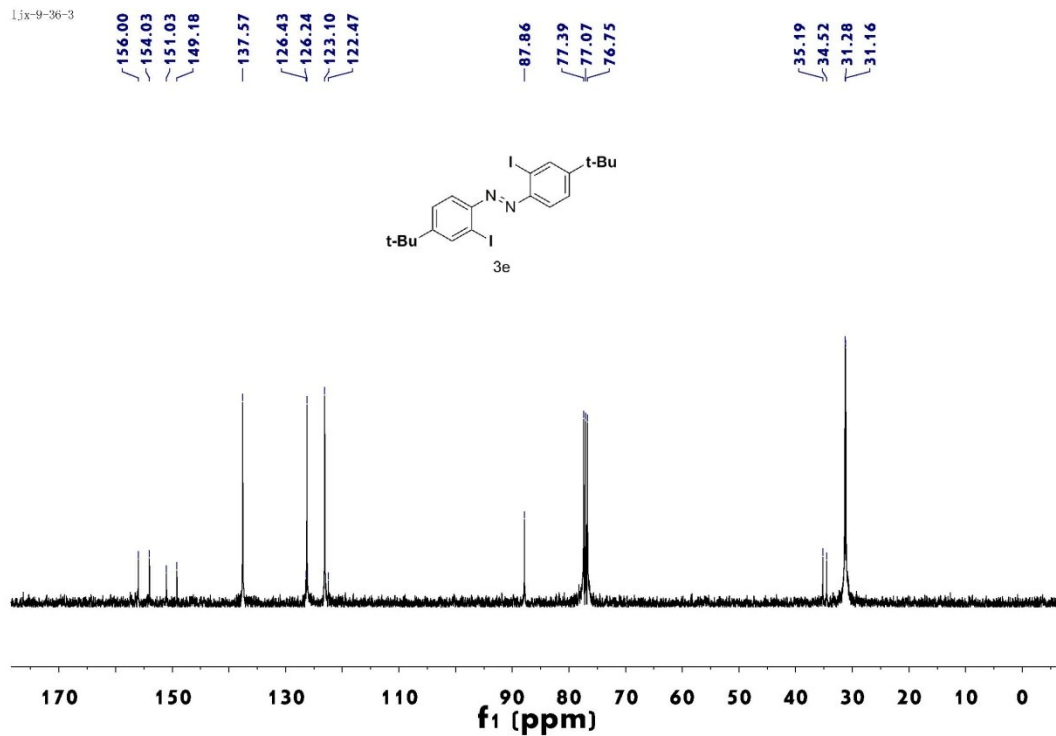
ljx-9-36-1



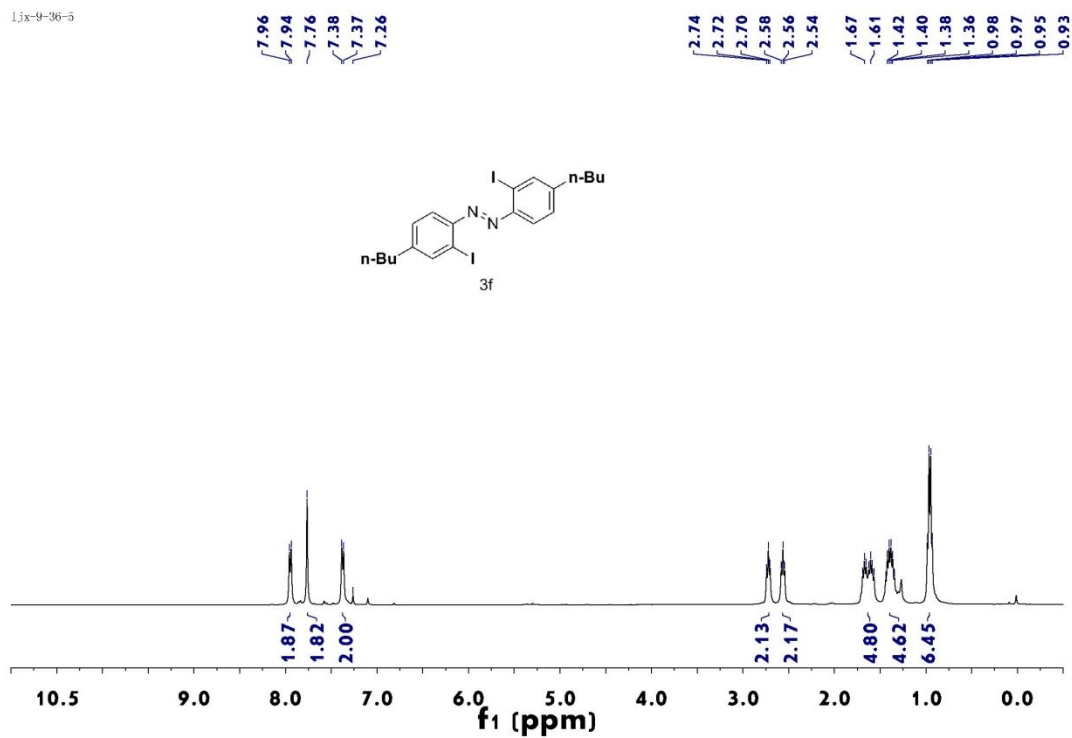
ljx-9-36-3



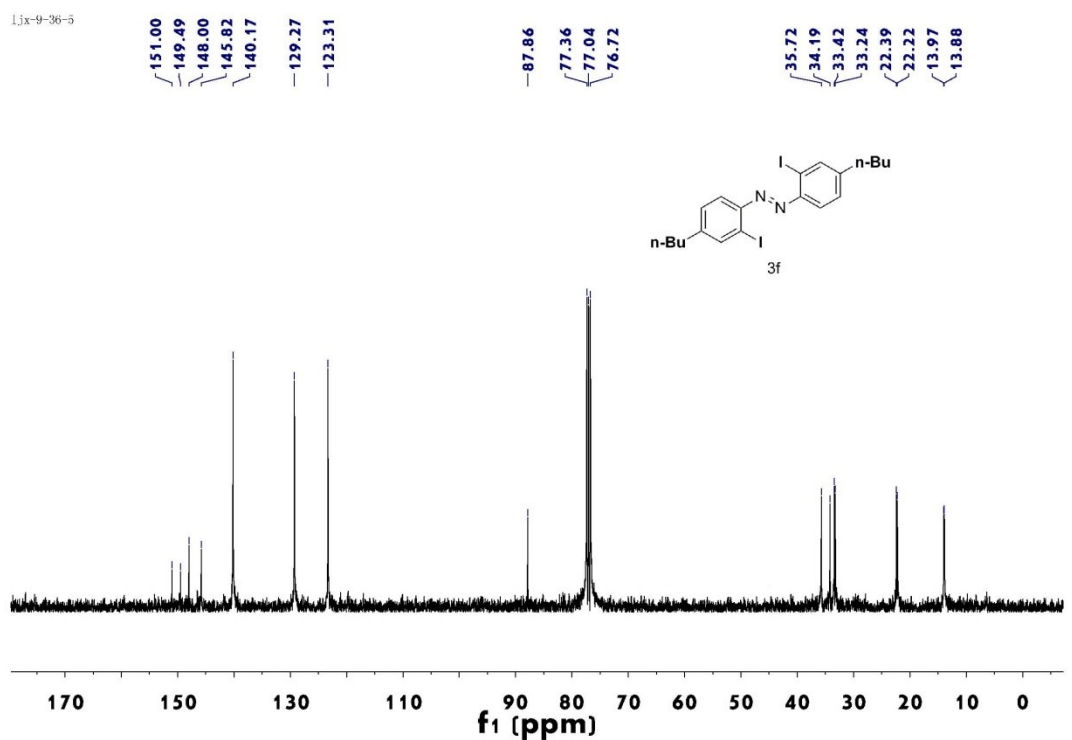
ljx-9-36-3



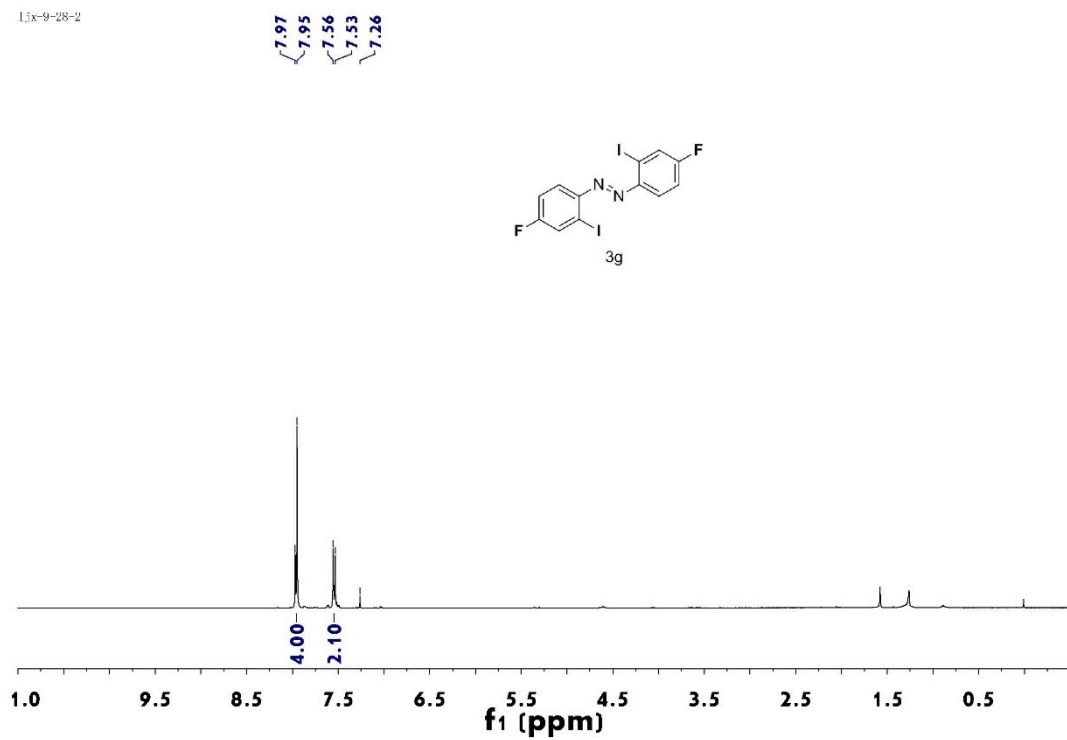
ljx-9-36-3



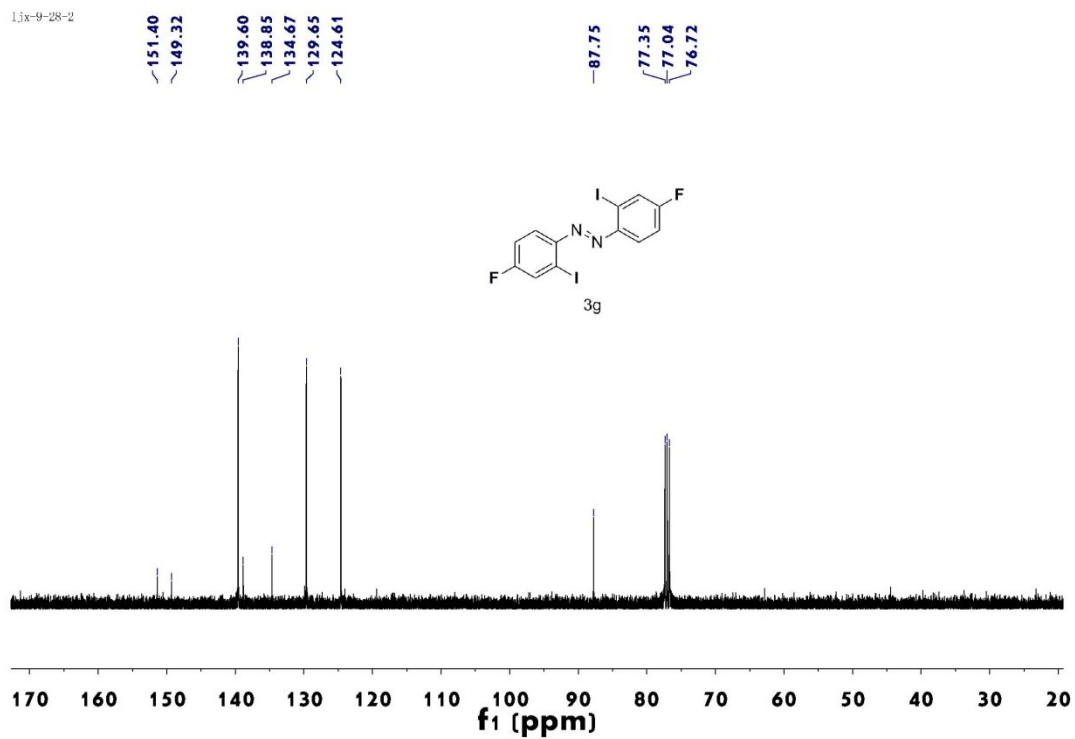
ljx-9-36-3



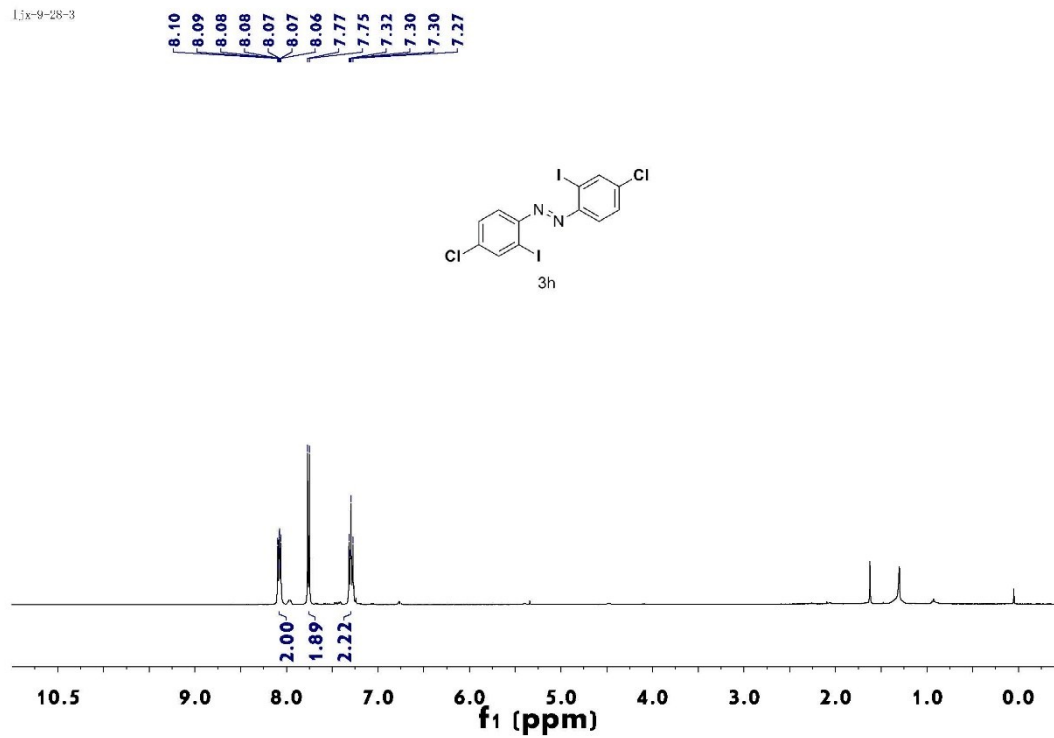
1jx-9-28-2



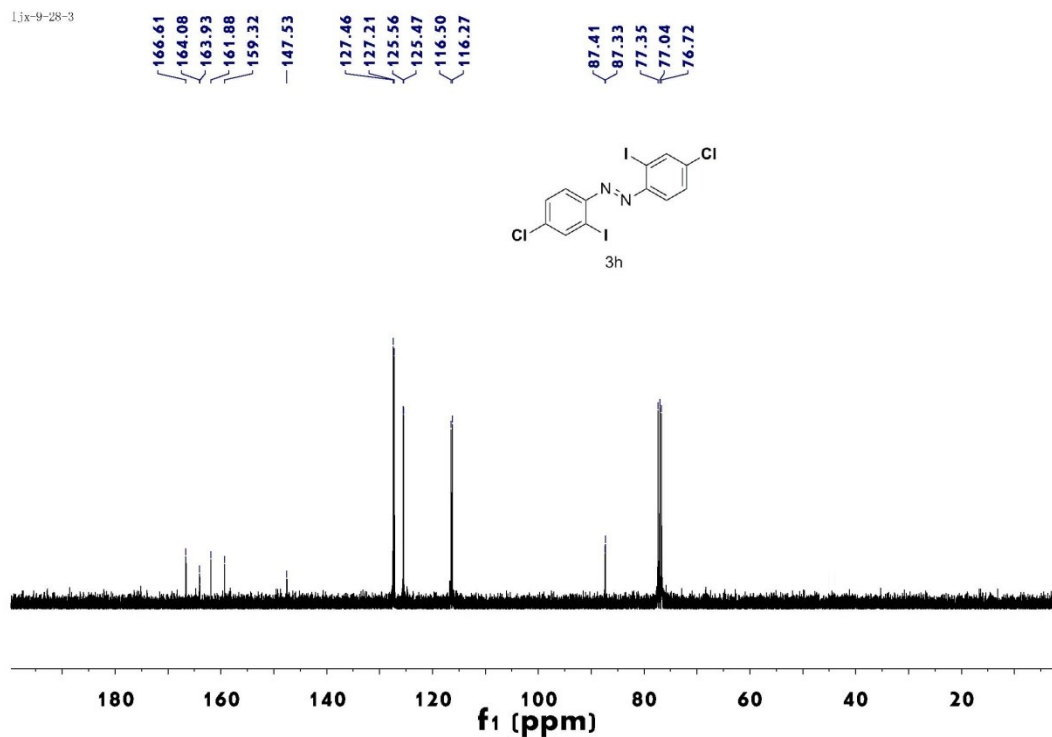
1jx-9-28-2



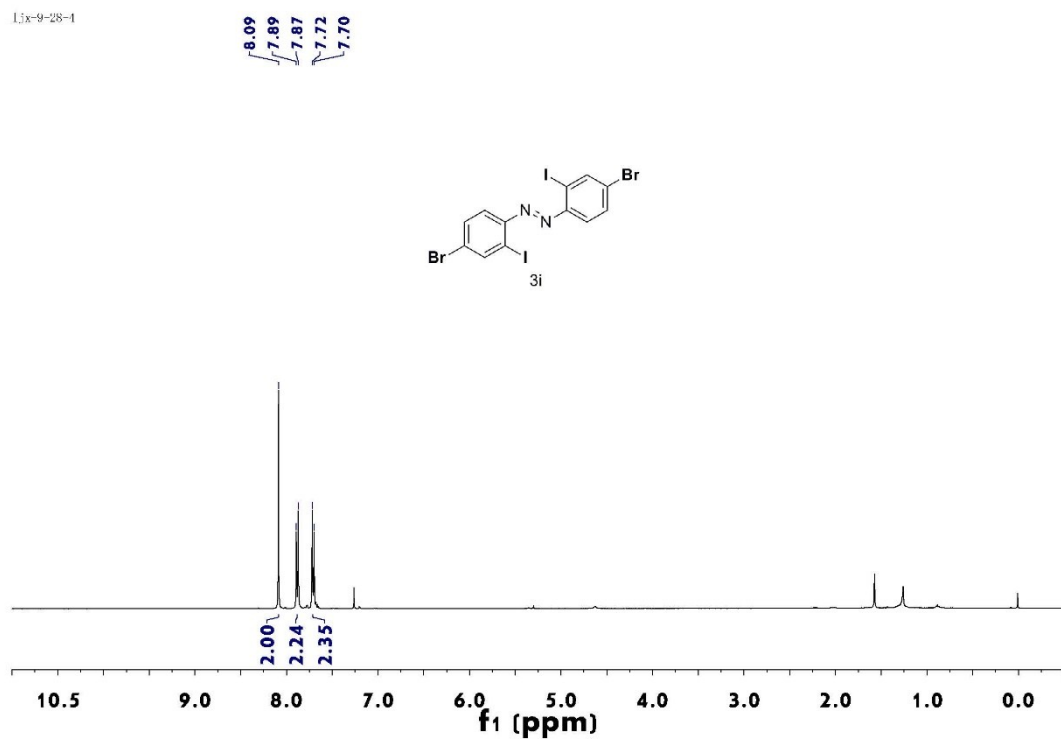
ljx-9-28-3



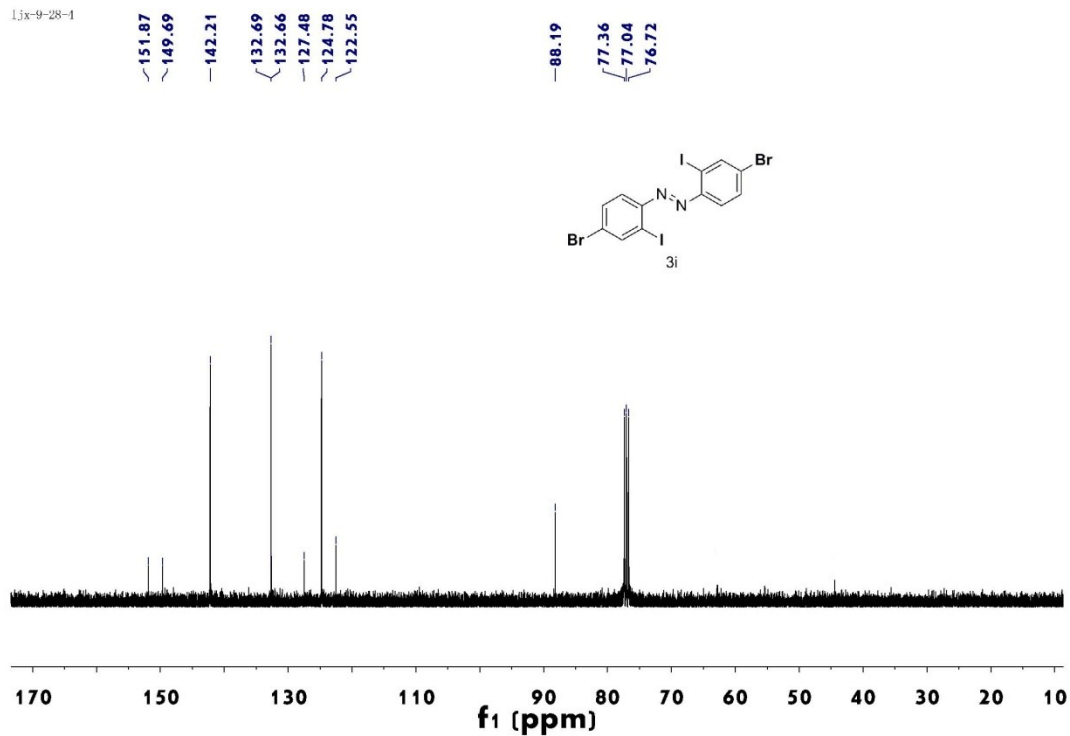
ljx-9-28-3



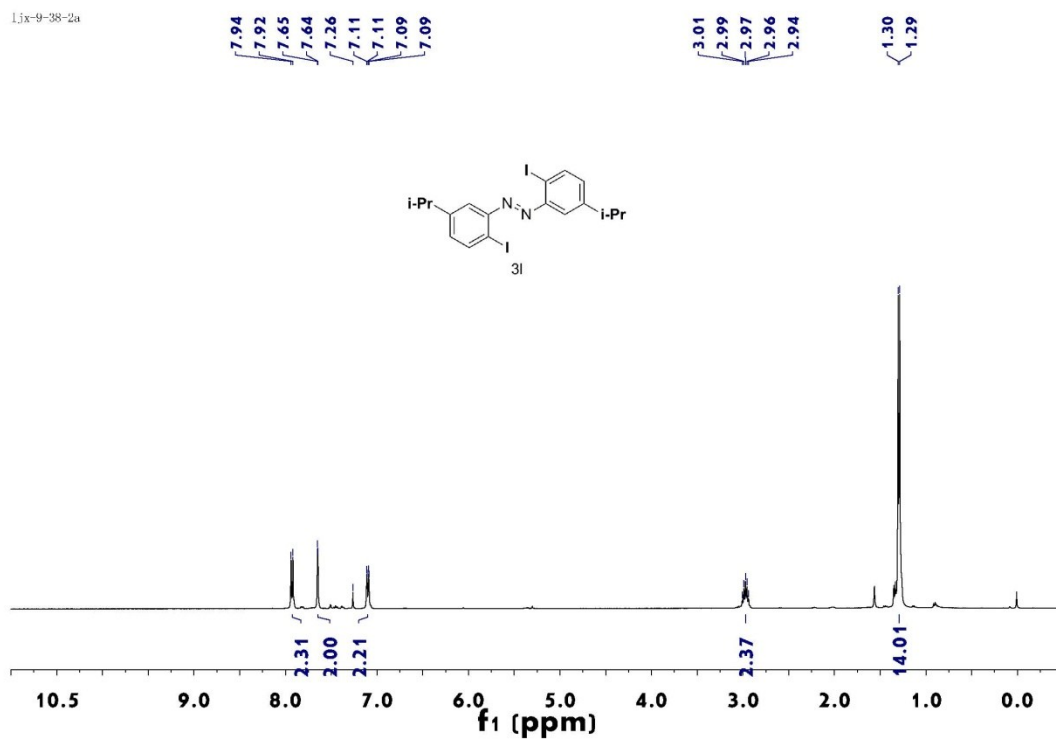
ljx-9-28-1



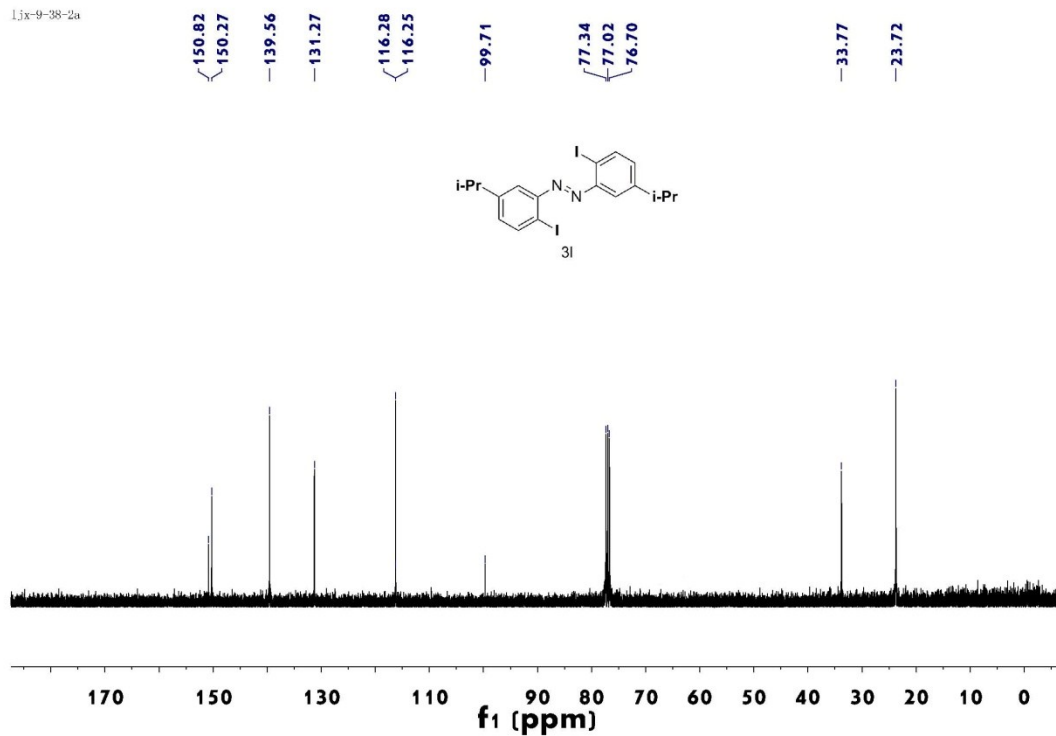
ljx-9-28-1



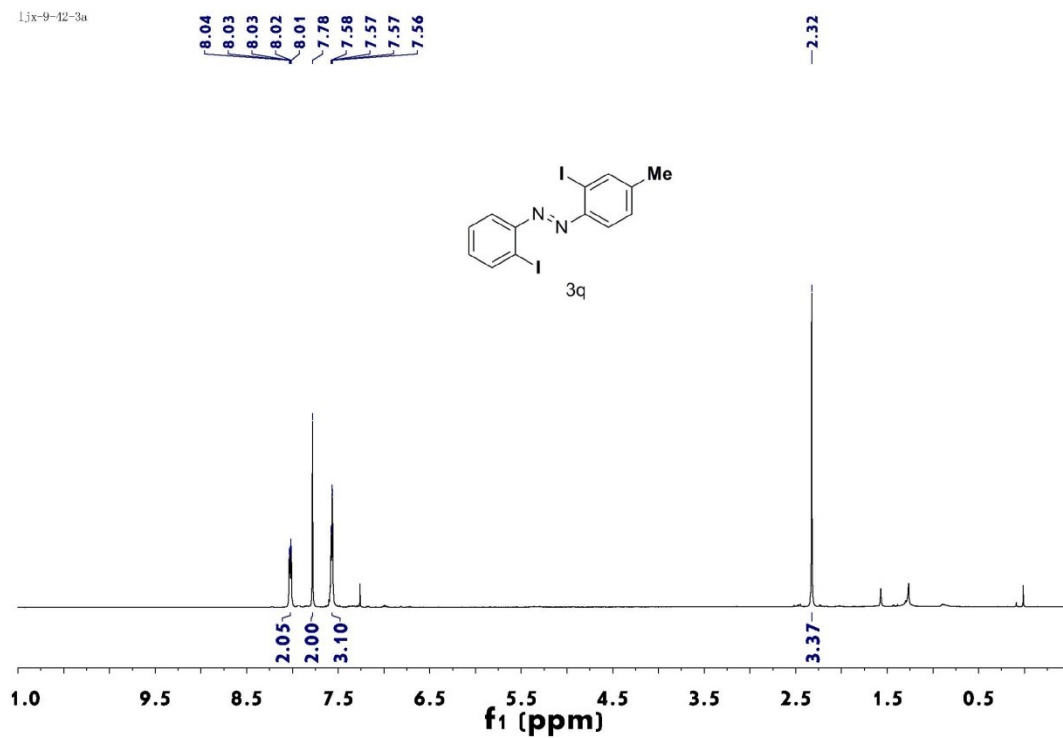
ljx-9-38-2a



ljx-9-38-2a



ljx-9-12-3a



ljx-9-12-3a

