

Combination of Preparative and Two-Dimensional Chromatographic Fractionation with Thermal Analysis for the Branching Analysis of Polyethylene

Paul S. Eselem Bungu,^a Kristina Pflug^b and Harald Pasch^{*a}

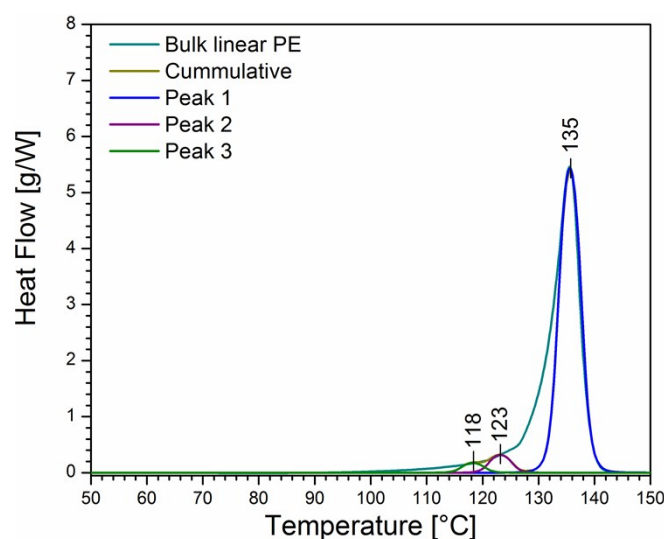


Figure S1: Peak Deconvolution of the SSA plot of linear PE 1, showing additional peaks at 118 and 123 °C

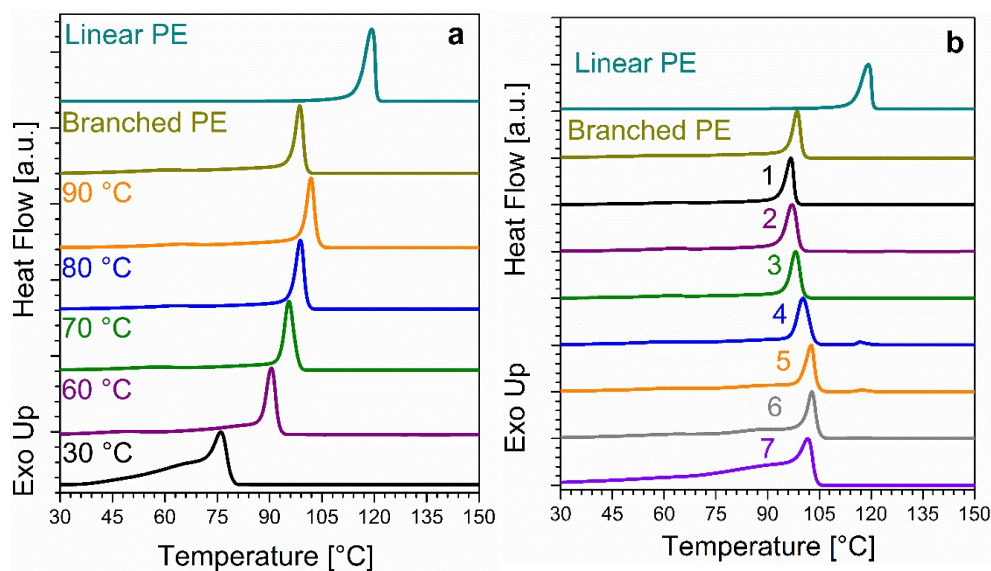


Figure S2: DSC crystallization exotherms of (a) TREF fractions and (b) MMF fractions. Linear PE 1 was used as the linear reference.

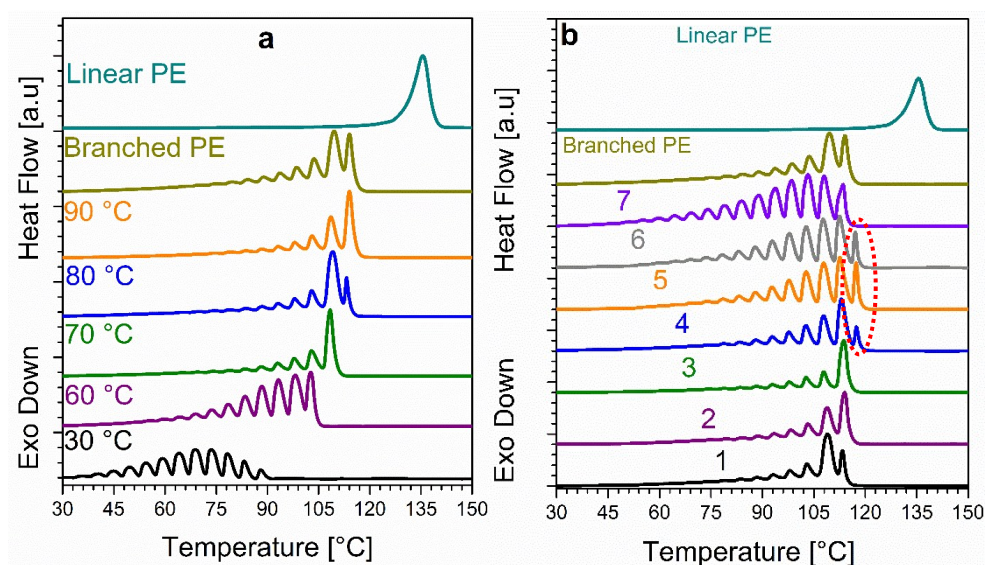


Figure S3: DSC melting endotherms obtained after thermal fractionation by SSA, (a) TREF fractions and (b) MMF fractions. Linear PE 1 was used as the linear reference.

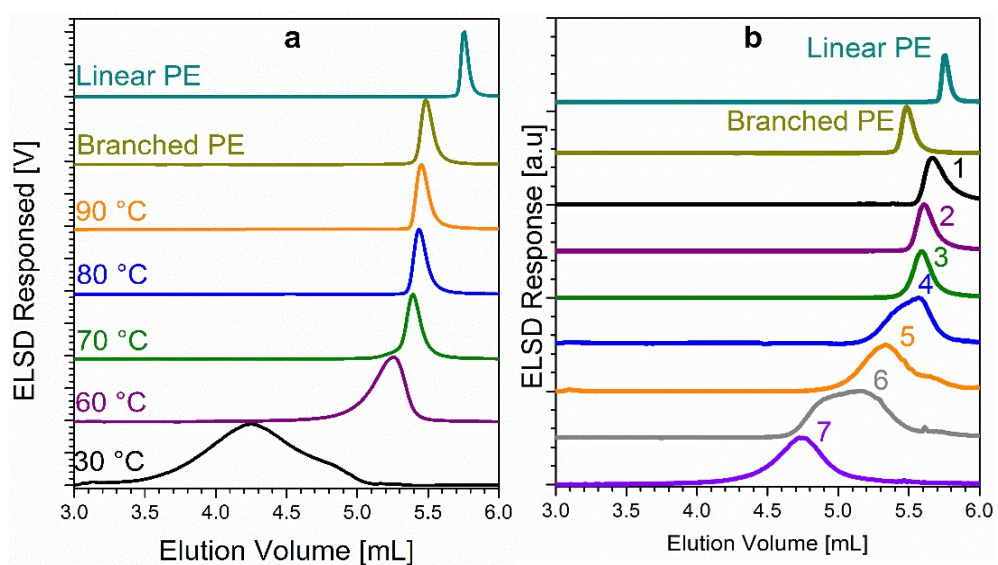


Figure S4: Individual HPLC elugrams of (a) TREF fractions and (b) MMF fractions of branched PE as compared to the linear and branched bulk samples. Linear PE 1 was used as the linear reference.