

## Supporting Information

### MOFs-derived Sponge-Like Hierarchical Porous Carbon for High-Performance Flexible All-Solid-State Supercapacitor

*Xiao-Man Cao, Zhi-Jia Sun, Si-Yu Zhao, Bing Wang and Zheng-Bo Han\**

*College of Chemistry, Liaoning University. Shenyang 110036 P.R. China*

*\*Corresponding author. E-mail: [ceshzb@lnu.edu.cn](mailto:ceshzb@lnu.edu.cn)*

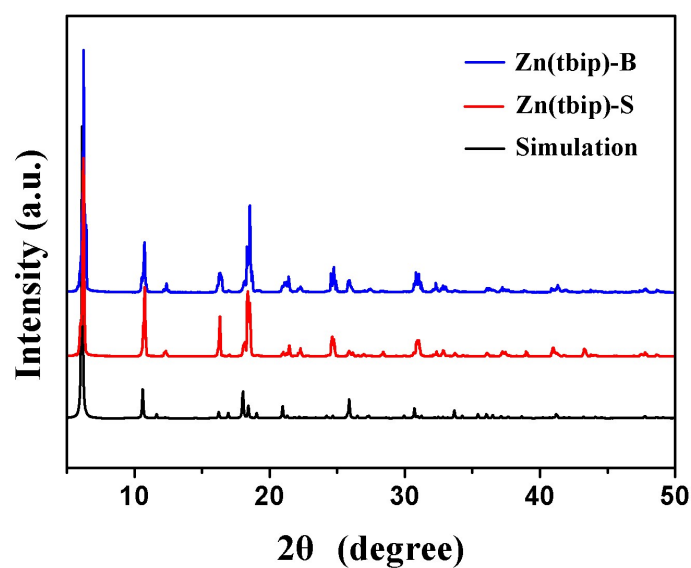


Fig. S1 PXRD patterns of the simulated single crystal crystallography data and the as-synthesized **Zn(tbip)-B** and **Zn(tbip)-S**.

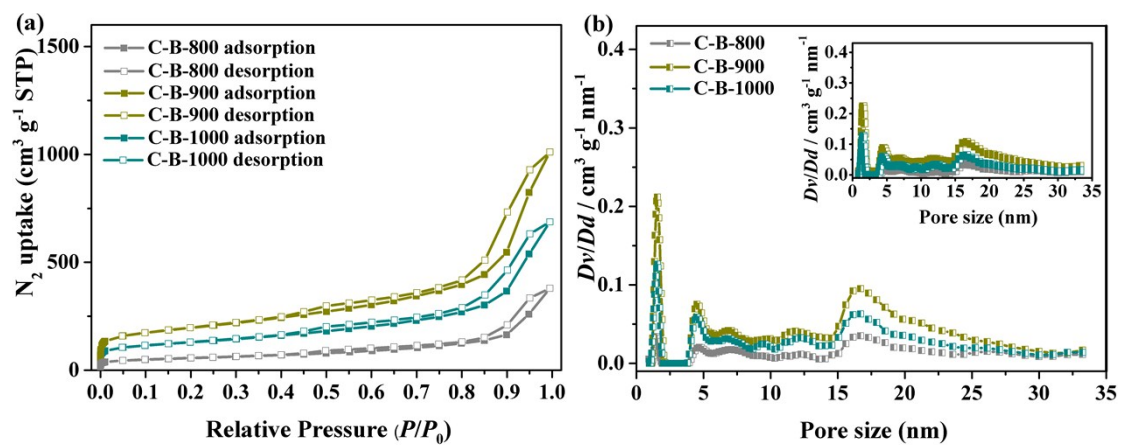


Fig. S2 (a) Nitrogen adsorption-desorption isotherms of **C-B-n** at 77 K (STP = standard temperature pressure); (b) Pore size distribution calculated using the NLDFT method for **C-B-n**.

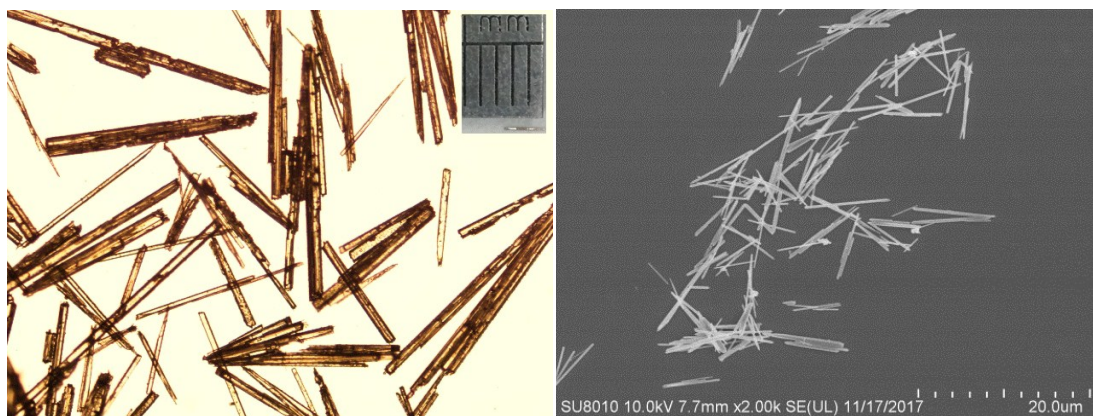


Fig. S3 (a) Optical photograph of the milli-sized rod-like crystals of **Zn(tbip)** and (b) SEM images of nano-sized **Zn(tbip)**.

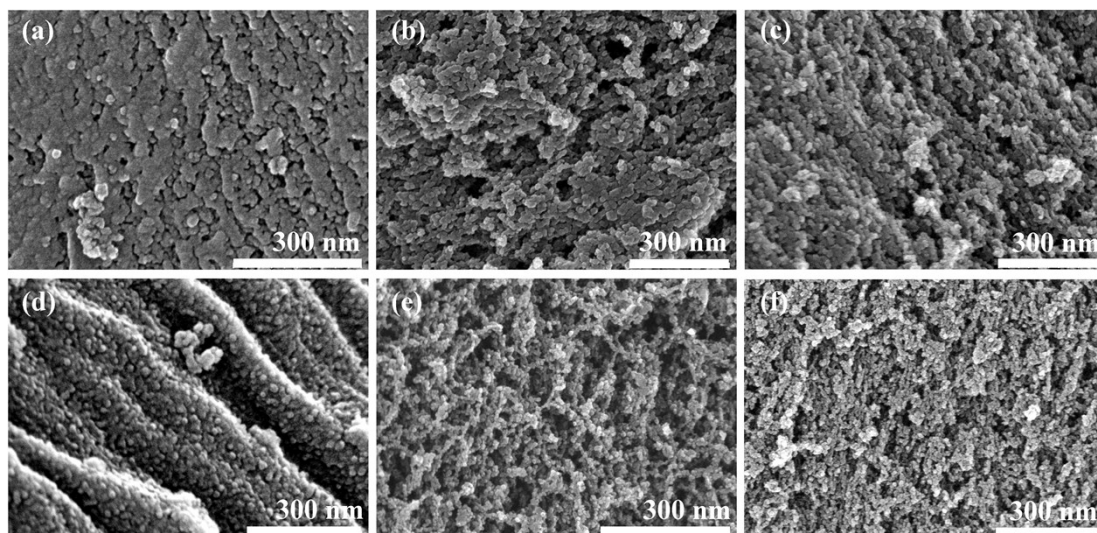


Fig. S4 SEM images of (a) **C-B-800**, (b) **C-B-900**, (c) **C-B-1000**, (d) **C-S-800**, (e) **C-S-900** and (f) **C-S-1000**.

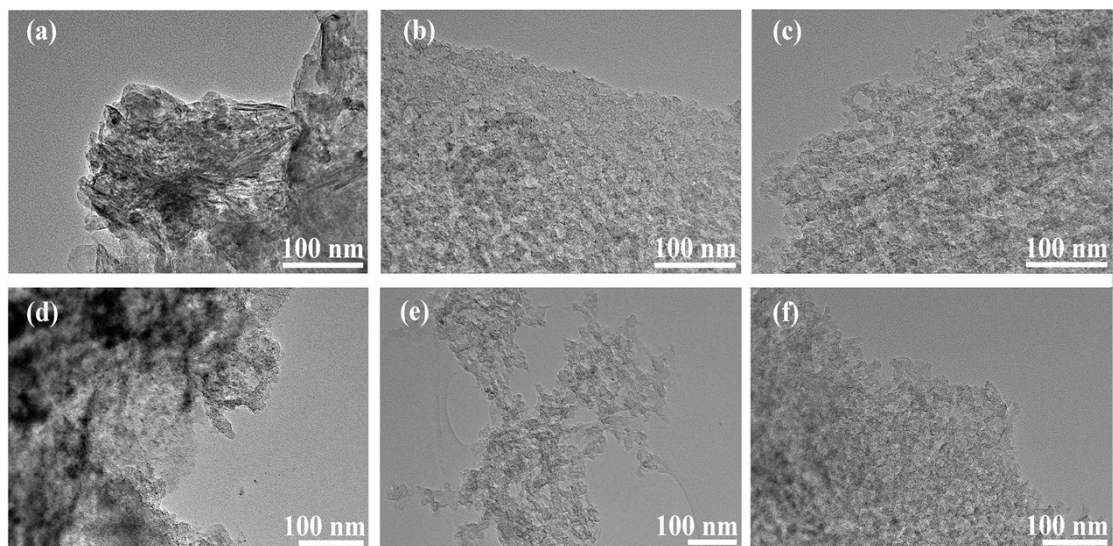


Fig. S5 TEM images of (a) **C-B-800**, (b) **C-B-900**, (c) **C-B-1000**, (d) **C-S-800**, (e) **C-S-900** and (f) **C-S-1000**.

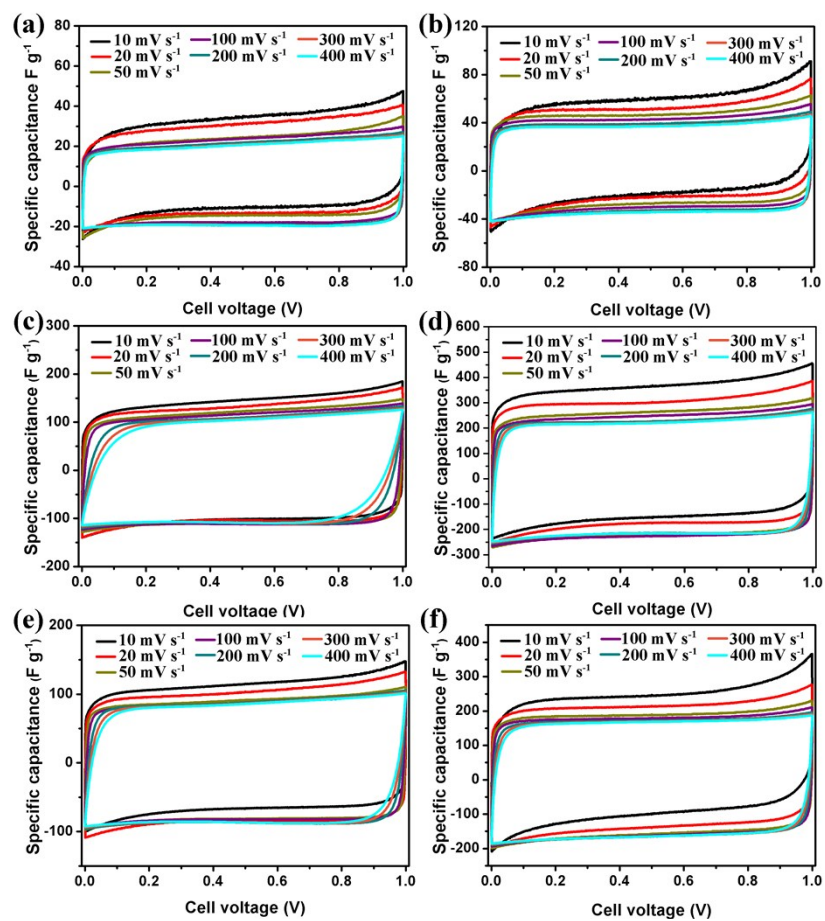


Fig. S6 Cyclic voltammeteral curves at different sweep rates (10-400  $\text{mV s}^{-1}$ ) for (a) C-B-800, (b) C-B-900, (c) C-B-1000, (d) C-S-800, (e) C-S-900 and (f) C-S-1000.

Table S1. The specific capacitance of **C-B-n** and **C-S-n** calculated by the data of CV curves in Figure S6.

Scan rate [mV s <sup>-1</sup> ]	10	25	50	100	200	300	400
<b>C-B-800</b> [F g <sup>-1</sup> ]	35	32	25	24	22	21	21
<b>C-S-800</b> [F g <sup>-1</sup> ]	61	51	47	43	40	39	38
<b>C-B-900</b> [F g <sup>-1</sup> ]	116	104	93	90	89	87	86
<b>C-S-900</b> [F g <sup>-1</sup> ]	369	305	268	254	231	229	226
<b>C-B-1000</b> [F g <sup>-1</sup> ]	148	135	125	117	111	110	107
<b>C-S-1000</b> [F g <sup>-1</sup> ]	248	218	194	183	176	172	170

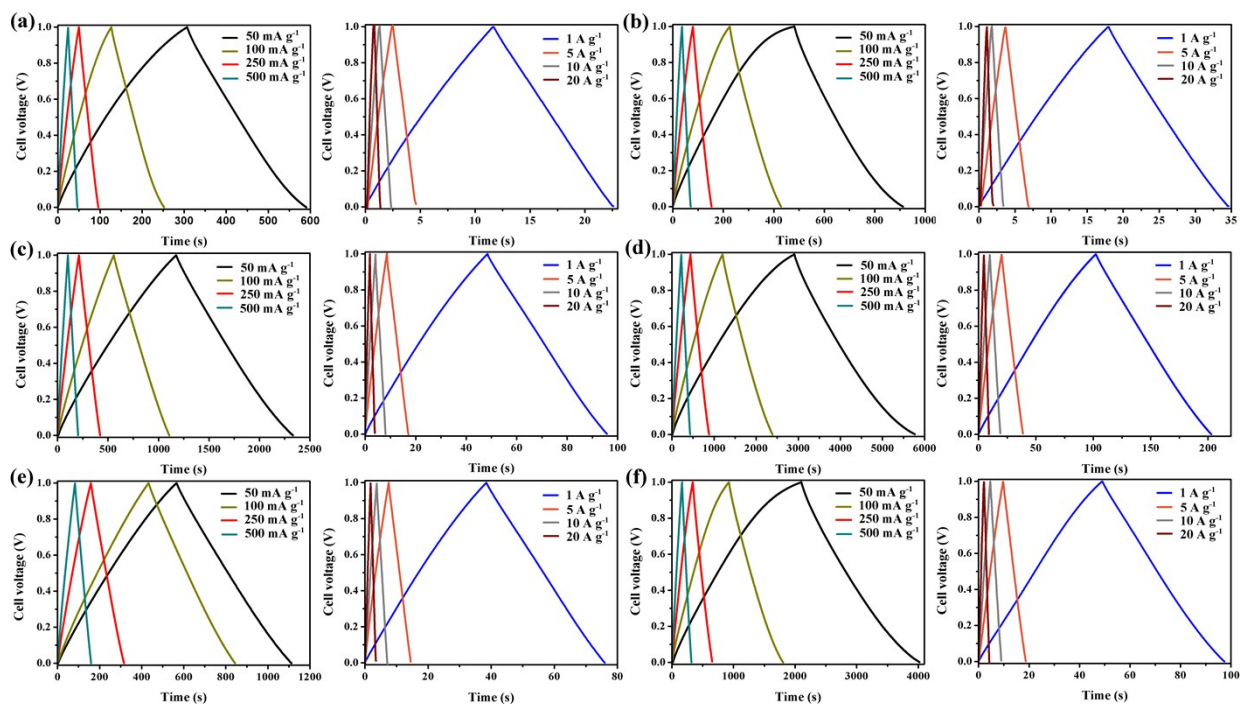


Fig. S7 Galvanostatic charge-discharge curves at different current densities for (a) **C-B-800**, (b) **C-B-900**, (c) **C-B-1000**, (d) **C-S-800**, (e) **C-S-900** and (f) **C-S-1000**.



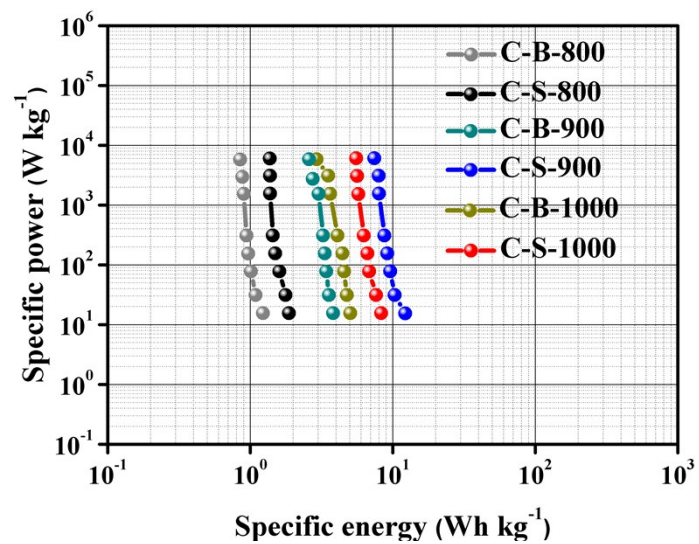


Fig. S8 Ragone plots (energy density vs power density) for C-B-n and C-S-n based symmetric supercapacitor.