

Supplementary materials

Figure S1 Macroscopic appearance and H&E staining (Scale bar: 100 μ m) of AKT/c-Met mouse livers at 4 weeks.

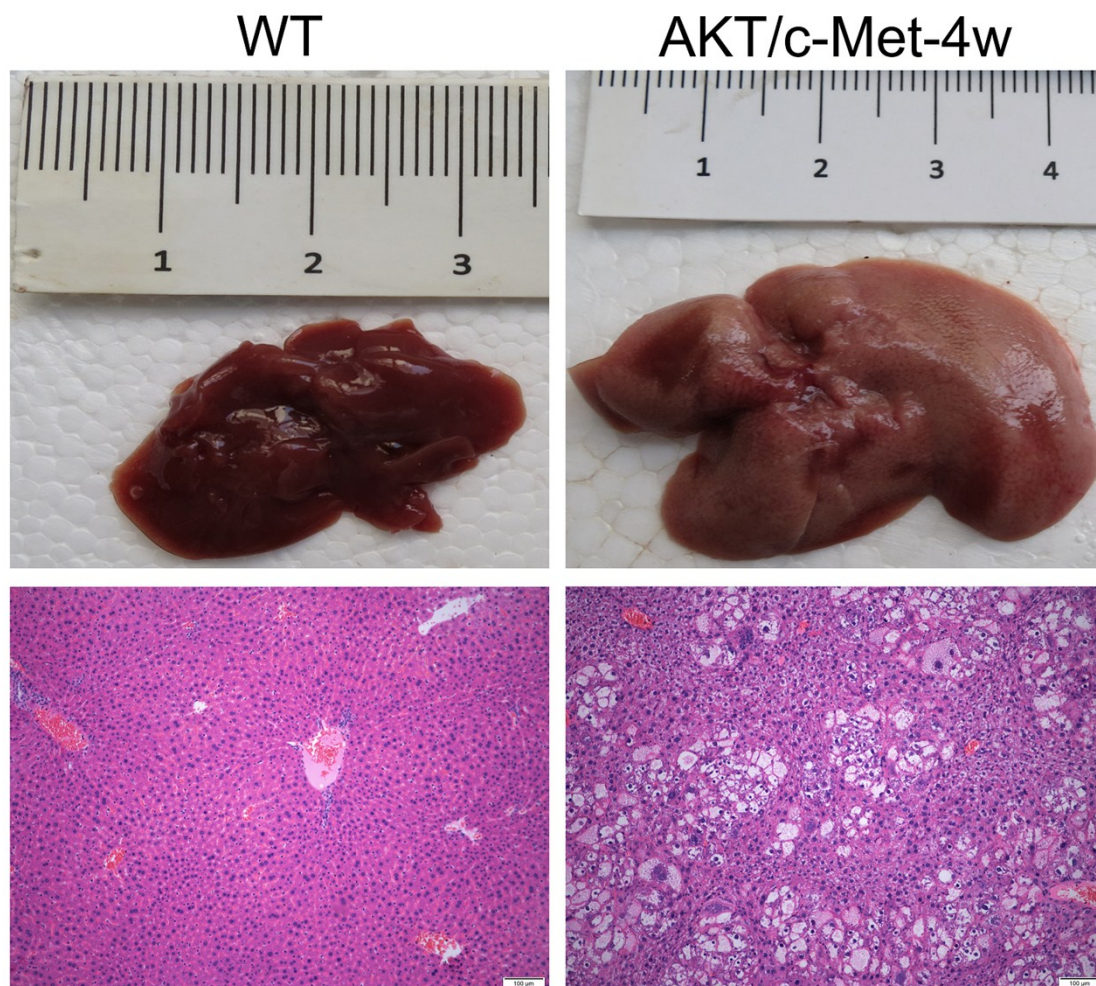


Figure S2 No changes in liver weight were detected in Sorafenib (100 mg/kg) treated AKT/c-Met HCC. Sorafenib (100 mg/kg) or vehicle (70 % Cremophor/ethanol 3:1, 20 % PBS, and 10 % DMSO) was intraperitoneally injected daily for 3 weeks starting 4 weeks after AKT/c-Met construct injection for early stage AKT/c-Met HCC treatment.

