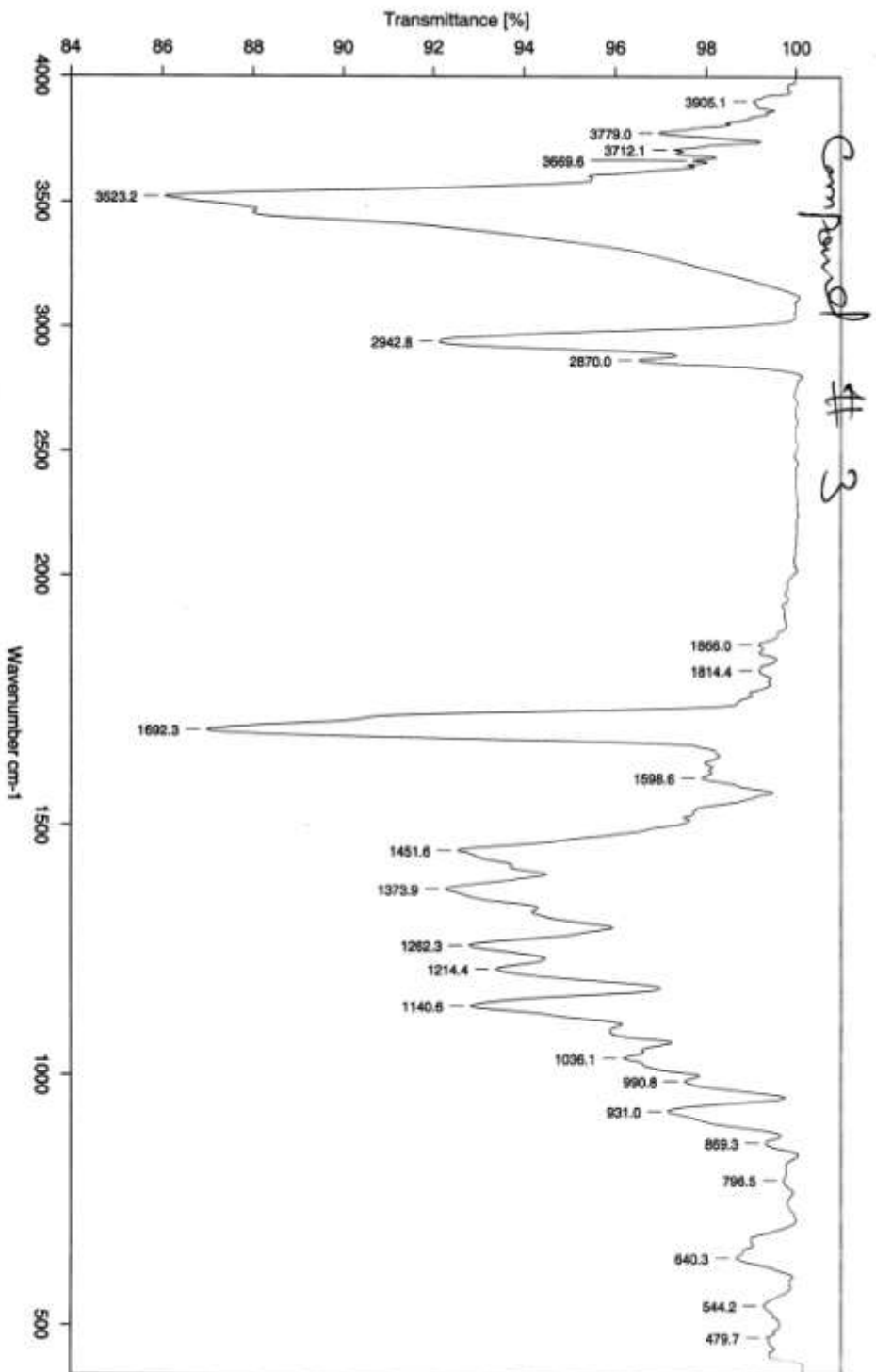


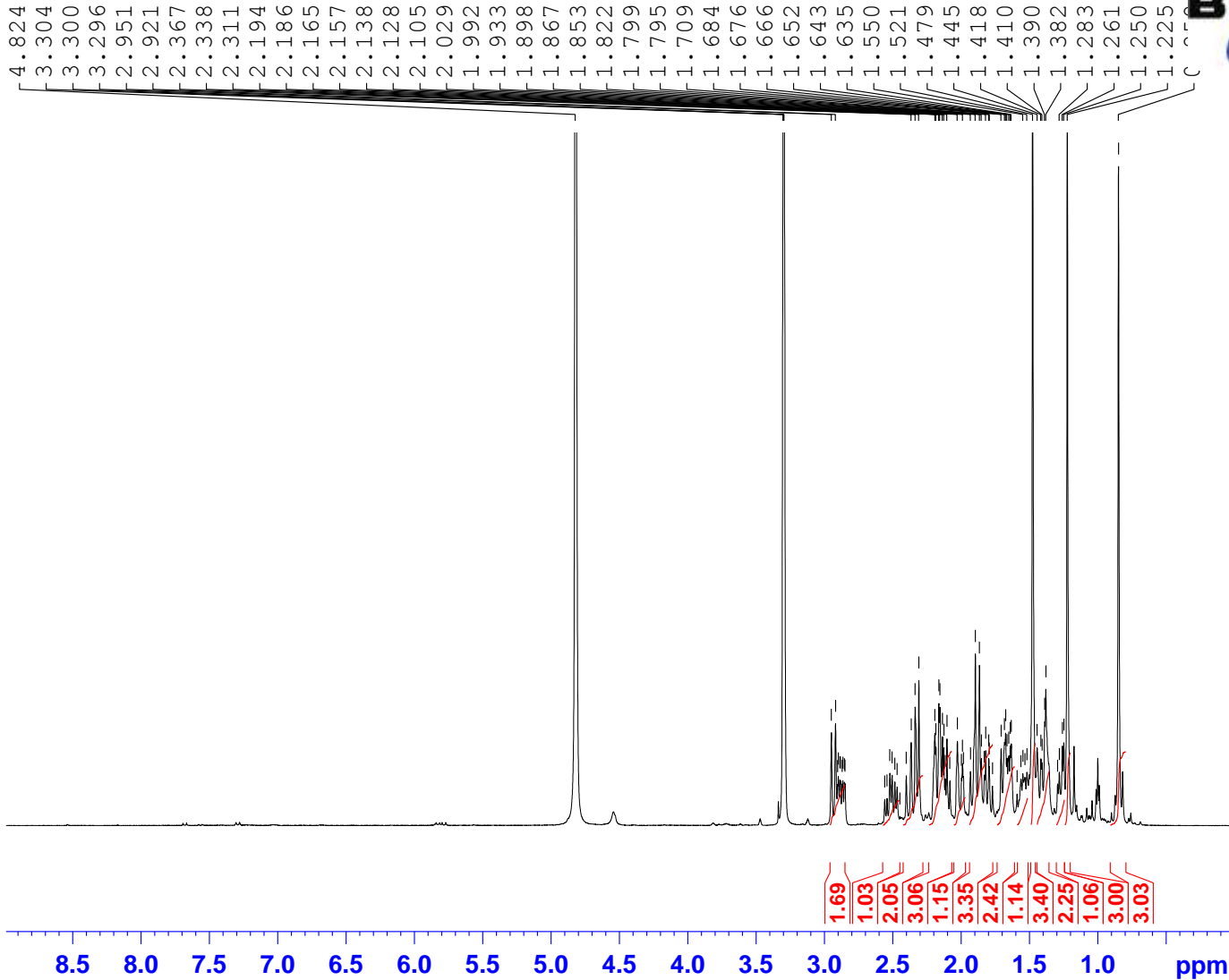
Compound # 3

Mass	Relative Intensity	Theoretical Mass	Delta [ppm]	Delta [amu]	RDB	Composition
281.1814	3.1	280.1886	-23.0	-6.4	0.0	C ₁₃ H ₂₃ O ₄
282.1971	1.9	281.1753	21.6	6.1	4.5	C ₁₄ H ₂₅ O ₄
283.1681	18.6	282.1984	-4.5	-1.3	8.0	C ₁₅ H ₂₇ O ₄
284.1740	4.5	283.1698	-6.0	-1.7	8.5	C ₁₆ H ₂₉ O ₄
285.1826	2.1	284.1776	-12.8	-3.6	9.0	C ₁₇ H ₃₁ O ₄
286.1886	0.6	285.1855	-9.9	-2.8	7.5	C ₁₈ H ₃₃ O ₄
287.1758	0.6	286.1933	-16.3	-4.7	7.0	C ₁₉ H ₃₅ O ₄
287.1843	0.7	287.1800	-14.6	-4.2	11.5	C ₂₀ H ₃₇ O ₄
287.1916	0.6	287.1858	-5.4	-1.5	2.5	C ₁₅ H ₂₇ O ₅
288.2050	0.8	287.1800	15.1	4.3	11.5	C ₁₆ H ₂₉ O ₅
289.1879	0.3	287.1858	19.9	5.7	2.5	C ₁₇ H ₃₁ O ₅
		288.2089	-13.5	-3.9	6.0	C ₁₈ H ₃₃ O ₅
		289.1804	26.1	7.5	6.5	C ₁₉ H ₃₅ O ₅
		289.1956	-26.7	-7.7	10.5	C ₂₀ H ₃₇ O ₅
291.1880	0.9	291.1808	24.8	7.2	1.5	C ₁₄ H ₂₇ O ₆
		291.1960	-27.6	-8.0	5.5	C ₁₅ H ₂₉ O ₆
292.1863	0.4	292.1886	-8.0	-2.3	1.0	C ₁₆ H ₃₁ O ₆
		292.1827	12.1	3.5	10.0	C ₁₇ H ₃₃ O ₆
293.1344	0.2	293.1330	4.8	1.4	19.5	C ₁₈ H ₃₅ O ₆
		293.1389	-15.3	-4.5	6.5	C ₁₉ H ₃₇ O ₆
294.1685	0.3	294.1679	2.4	0.7	1.0	C ₂₀ H ₃₉ O ₆
		294.1620	22.3	6.6	10.0	C ₂₁ H ₄₁ O ₆
295.1922	0.2	295.1909	4.4	1.3	4.5	C ₁₇ H ₃₇ O ₇
296.1775	1.8	296.1776	-0.6	-0.2	9.0	C ₁₈ H ₃₉ O ₇
		296.1835	-20.4	-6.0	0.0	C ₁₉ H ₄₁ O ₇
297.1798	1.0	297.1855	-19.0	-5.7	8.5	C ₂₀ H ₄₃ O ₇
298.1924	50.3	298.1933	-2.9	-0.9	8.0	C ₂₁ H ₄₅ O ₇
299.1965	11.9	299.2011	-15.3	-4.6	7.5	C ₂₂ H ₄₇ O ₇
300.2019	3.2	300.2089	-23.6	-7.1	7.0	C ₂₃ H ₄₉ O ₇
		300.1937	27.2	8.2	3.0	C ₁₄ H ₂₉ O ₈
301.1807	14.4	301.1804	1.1	0.3	7.5	C ₁₅ H ₃₁ O ₈
302.1824	3.3	302.1882	-19.3	-5.8	7.0	C ₁₆ H ₃₃ O ₈
303.1924	0.4	303.1960	-11.8	-3.6	6.5	C ₁₇ H ₃₅ O ₈
309.2234	0.2	309.2218	5.2	1.6	8.5	C ₁₈ H ₃₇ O ₈
312.1770	0.3	312.1784	-4.7	-1.5	0.0	C ₁₉ H ₃₉ O ₈
		312.1725	14.1	4.4	9.0	C ₂₀ H ₄₁ O ₈
314.1904	1.1	314.1882	7.0	2.2	8.0	C ₂₁ H ₄₃ O ₈
315.2019	0.4	315.1960	18.6	5.9	7.5	C ₂₂ H ₄₅ O ₈
		315.2113	-29.8	-9.4	11.5	C ₂₃ H ₄₇ O ₈
316.2060	34.1	316.2038	6.9	2.2	7.0	C ₁₄ H ₃₁ O ₉
317.2092	8.6	317.2117	-7.8	-2.5	6.5	C ₁₅ H ₃₃ O ₉
318.2143	1.4	318.2195	-16.3	-5.2	6.0	C ₁₆ H ₃₅ O ₉
319.2074	0.3	319.2062	3.9	1.3	10.5	C ₁₇ H ₃₇ O ₉
✓ 334.2140	0.9	319.2121	-14.5	-4.6	1.5	C ₁₈ H ₃₉ O ₉
		334.2144	-1.4	-0.5	6.0	C ₁₉ H ₄₁ O ₉
335.2279	0.3	335.2222	17.0	5.7	5.5	C ₂₀ H ₄₃ O ₉
		335.2375	-28.5	-9.6	9.5	C ₂₁ H ₄₅ O ₉



Sample : Mes/J/F37/Rabia Farooq/Prof. Dr. M. I. Choudhary
Measured : 10/11/2016 on VECTOR22
Resolution : 4 cm-1 (10 scans)
Spectrum : F37.0 (in D:\IRSTUDENT\MesJ)
Technic : SOLID
Analyst : M.Qasir/ZQ

RABIA/DR.IQBAL/MES.I.F37
1H/.



Current Data Parameters
NAME compd 3
EXPNO 1
PROCNO 1

F2 - Acquisition Parameters
Date_ 20160527
Time_ 15.24
INSTRUM spect
PROBHD 5 mm SEI 1H-13
PULPROG zg30
TD 65536
SOLVENT MeOD
NS 128
DS 0
SWH 8012.820 Hz
FIDRES 0.122266 Hz
AQ 4.0894465 sec
RG 228.1
DW 62.400 usec
DE 6.50 usec
TE 300.0 K
D1 2.0000000 sec
TD0 1

==== CHANNEL f1 =====
NUC1 1H
P1 10.80 usec
PL1 3.00 dB
SFO1 400.0332002 MHz

F2 - Processing parameters
SI 32768
SF 400.0300087 MHz
WDW EM
SSB 0
LB 0.30 Hz
GB 0
PC 0.20

Rabia / Dr. Iqbal / Mes.j.f.37
BB

214.66
214.40

83.45
81.52
59.16
55.45
49.85
49.57
49.29
49.00
48.72
48.44
48.32
48.15
47.60
45.18
43.49
40.00
38.71
38.52
36.56
32.62



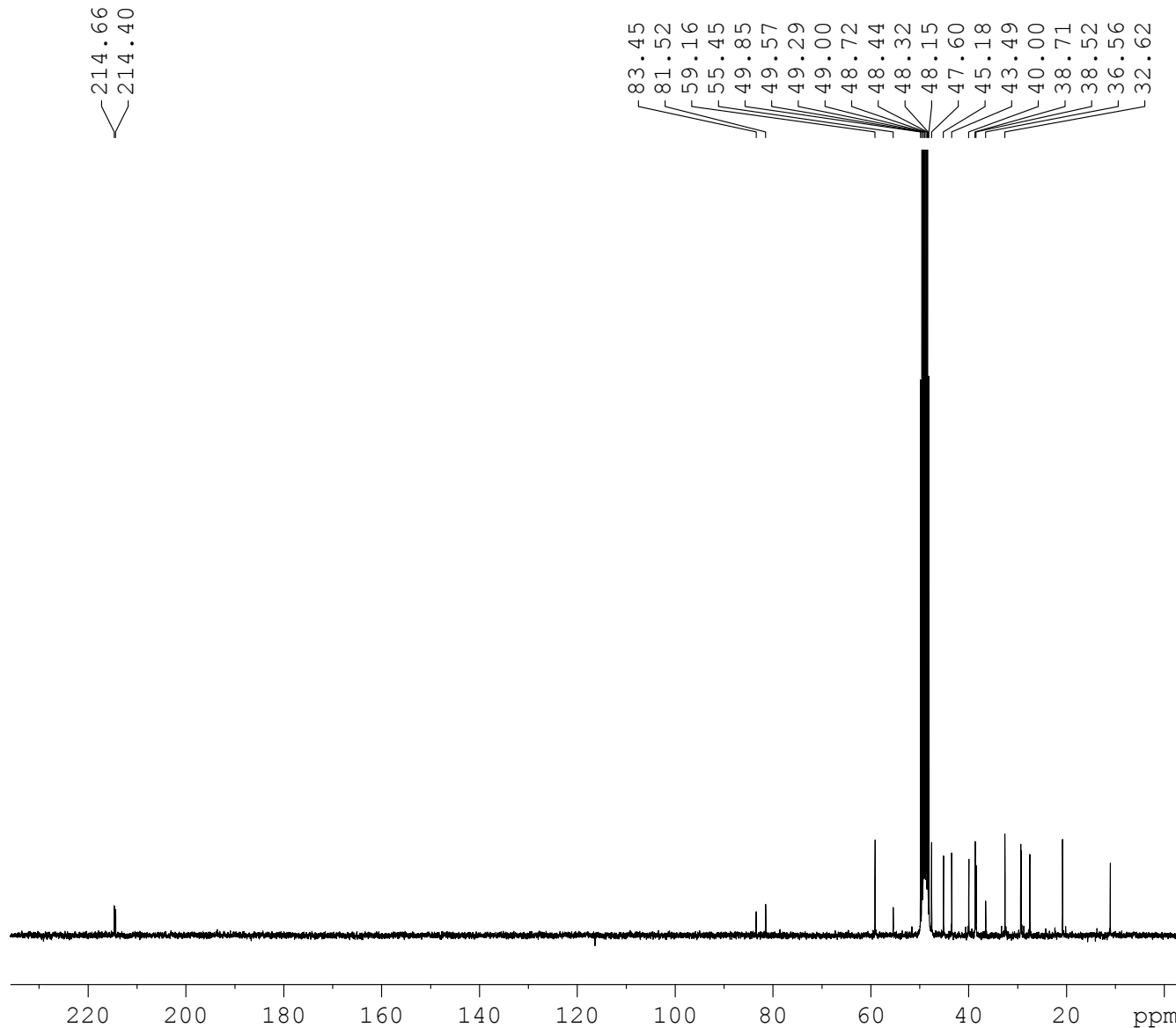
Current Data Parameters
NAME compd 3
EXPNO 2
PROCNO 1

F2 - Acquisition Parameters
Date_ 20160811
Time_ 15.10
INSTRUM Spect
PROBHD 5 mm BBO BB-1H
PULPROG zgpg
TD 32768
SOLVENT MeOD
NS 20480
DS 2
SWH 18028.846 Hz
FIDRES 0.550197 Hz
AQ 0.9087659 sec
RG 80.6
DW 27.733 usec
DE 6.50 usec
TE 300.0 K
D1 1.5000000 sec
D11 0.0300000 sec
TD0 20

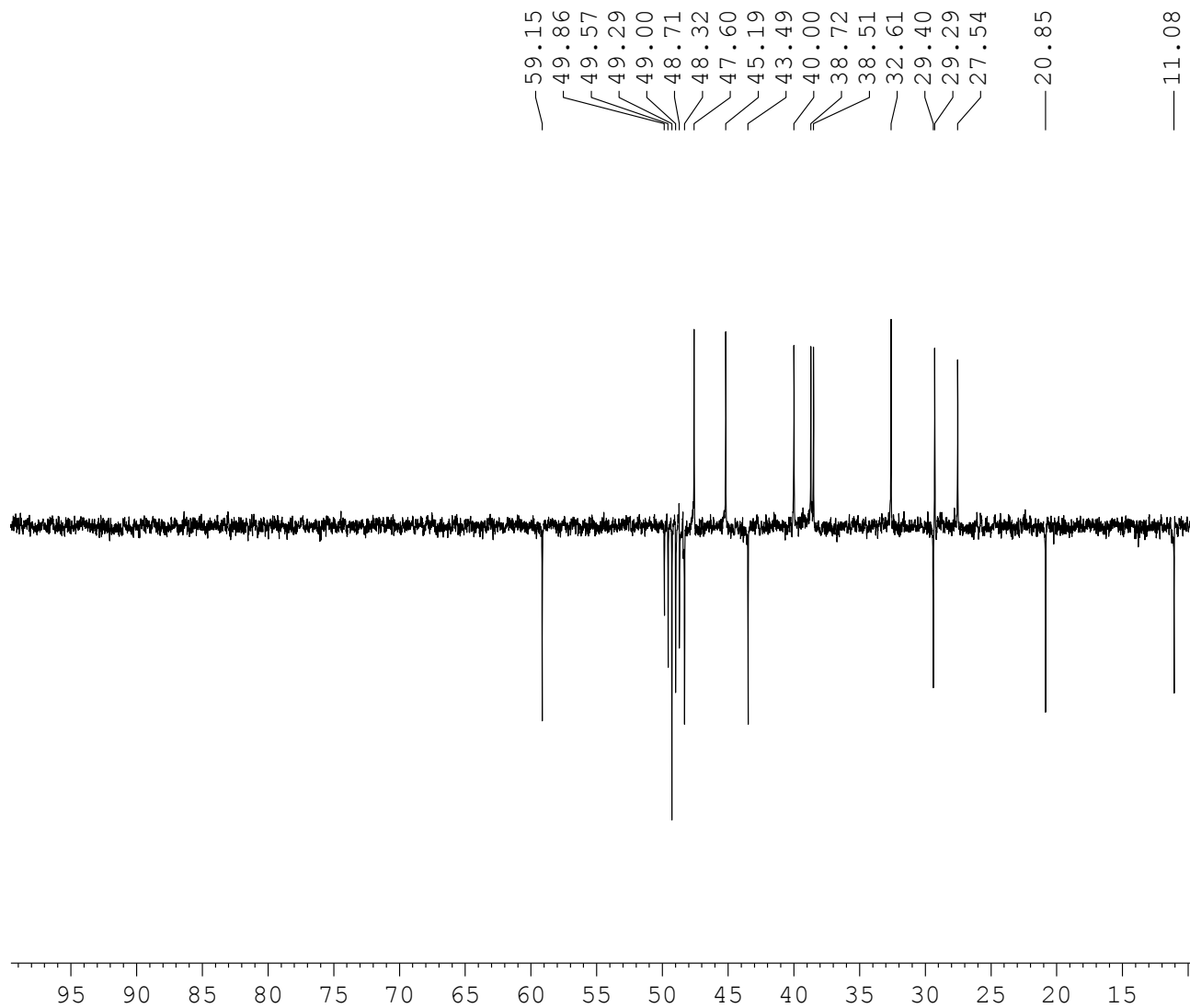
==== CHANNEL f1 =====
NUC1 13C
P1 12.00 usec
PL1 0 dB
PL1W 28.88669395 W
SF01 75.4764278 MHz

==== CHANNEL f2 =====
CPDPRG[2] waltz16
NUC2 1H
PCPD2 80.00 usec
PL2 0 dB
PL12 16.12 dB
PL13 17.00 dB
PL2W 13.16228485 W
PL12W 0.32161123 W
PL13W 0.26262212 W
SF02 300.1315007 MHz

F2 - Processing parameters
SI 16384
SF 75.4676416 MHz
WDW EM
SSB 0
LB 1.00 Hz
GB 0
PC 1.00



Rabia / Dr. Iqbal / Mes.j.f.37
DEPT135



Current Data Parameters
NAME compd 3
EXPNO 7
PROCNO 1

F2 - Acquisition Parameters
Date_ 20160812
Time_ 5.18
INSTRUM Spect
PROBHD 5 mm BBO BB-1H
PULPROG dept135
TD 32768
SOLVENT MeOD
NS 10240
DS 2
SWH 14367.816 Hz
FIDRES 0.438471 Hz
AQ 1.1403264 sec
RG 203
DW 34.800 usec
DE 6.50 usec
TE 300.0 K
CNST2 145.0000000
D1 1.50000000 sec
D2 0.00344828 sec
D12 0.00002000 sec
TD0 10

==== CHANNEL f1 =====
NUC1 13C
P1 12.00 usec
P2 24.00 usec
PL1 0 dB
PL1W 28.88669395 W
SFO1 75.4749184 MHz

==== CHANNEL f2 =====
CPDPRG[2] waltz16
NUC2 1H
P3 12.50 usec
P4 25.00 usec
PCPD2 80.00 usec
PL2 0 dB
PL12 16.12 dB
PL2W 13.16228485 W
PL12W 0.32161123 W
SFO2 300.1315007 MHz

F2 - Processing parameters
SI 16384
SF 75.4676416 MHz
WDW EM
SSB 0
LB 1.00 Hz
GB 0
1.20

Rabia / Dr. Iqbal / Mes.j.f.37
DEPT-90



— 59.16
49.86
49.57
49.00
48.71
48.32
43.49
29.29
27.54

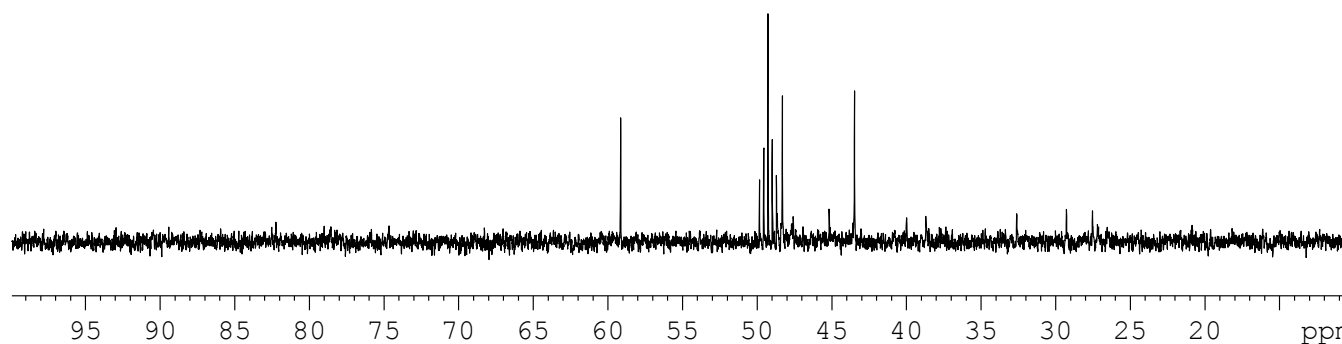
Current Data Parameters
NAME compd 3
EXPNO 8
PROCNO 1

F2 - Acquisition Parameters
Date_ 20160812
Time 12.54
INSTRUM Spect
PROBHD 5 mm BBO BB-1H
PULPROG dept90
TD 32768
SOLVENT MeOD
NS 3072
DS 2
SWH 14367.816 Hz
FIDRES 0.438471 Hz
AQ 1.1403264 sec
RG 203
DW 34.800 usec
DE 6.50 usec
TE 300.0 K
CNST2 145.0000000
D1 1.50000000 sec
D2 0.00344828 sec
D12 0.00002000 sec
TD0 3

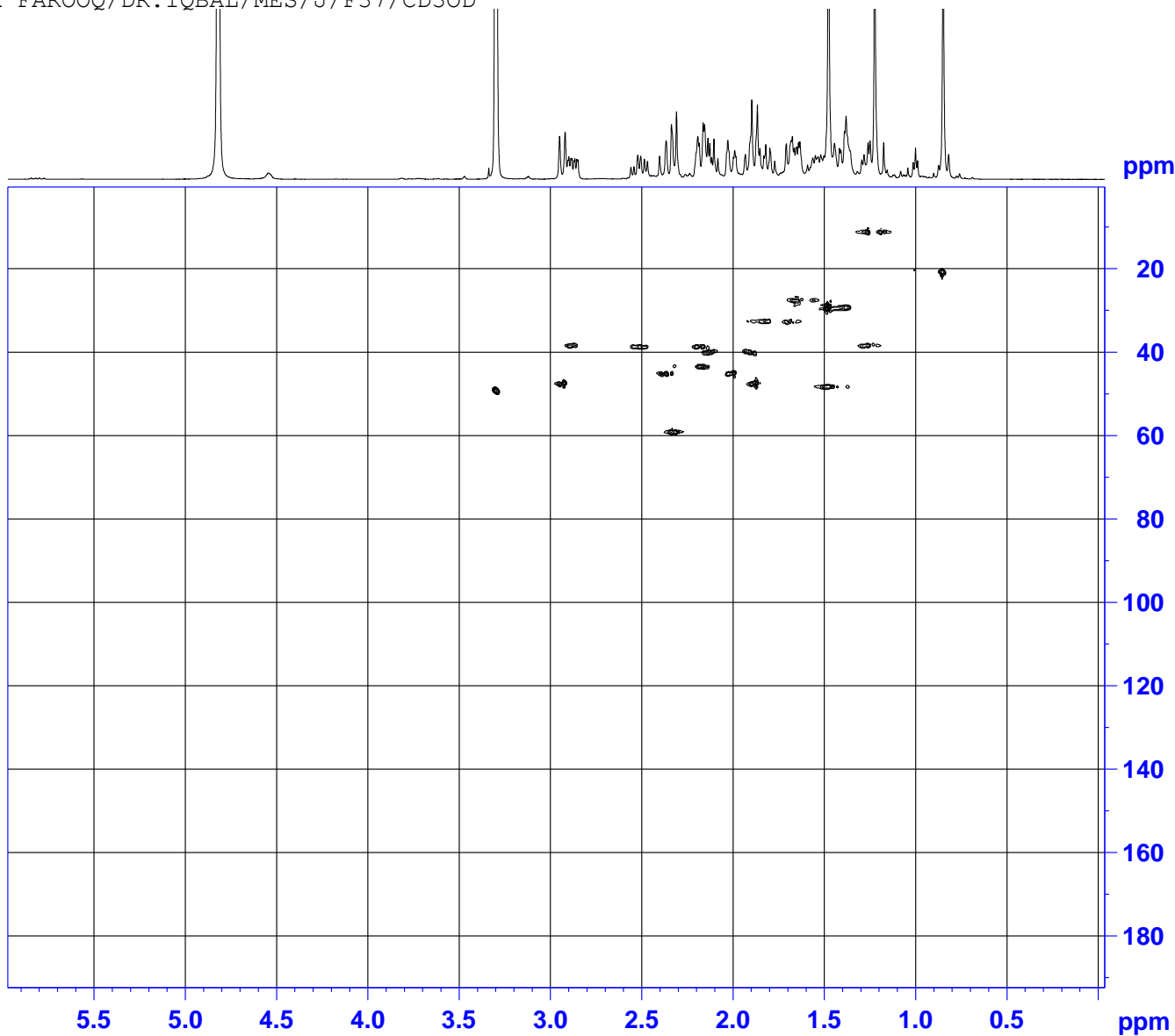
==== CHANNEL f1 =====
NUC1 13C
P1 12.00 usec
P2 24.00 usec
PL1 0 dB
PL1W 28.88669395 W
SFO1 75.4749184 MHz

==== CHANNEL f2 =====
CPDPRG[2] waltz16
NUC2 1H
P3 12.50 usec
P4 25.00 usec
PCPD2 80.00 usec
PL2 0 dB
PL12 16.12 dB
PL2W 13.16228485 W
PL12W 0.32161123 W
SFO2 300.1315007 MHz

F2 - Processing parameters
SI 16384
SF 75.4676416 MHz
WDW EM
SSB 0
LB 1.00 Hz
GB 0
PC 1.00



RABIA FAROOQ/DR. IQBAL/MES/J/F37/CD3OD
HSQC



Current Data Parameters
NAME compd 3
EXPNO 4
PROCNO 1

F2 - Acquisition Parameters
Date 20160607
Time 20.33
INSTRUM spect
PROBHD 5 mm BBI 1H/D-
PULPROG hsqcedetgp
TD 1024
SOLVENT MeOD
NS 32
DS 8
SWH 3004.608 Hz
FIDRES 2.934382 Hz
AQ 0.1703936 sec
RG 26008
DW 166.400 usec
DE 6.50 usec
TE 299.8 K
CNST2 145.000000
D0 0.00000300 sec
D1 1.50000000 sec
D4 0.00172414 sec
D11 0.03000000 sec
D13 0.00000400 sec
D16 0.00020000 sec
D21 0.00350000 sec
IN0 0.00002070 sec
ZGOPTNS

==== CHANNEL f1 =====
NUC1 1H
P1 8.00 usec
P2 16.00 usec
P28 1000.00 usec
PL1 -1.00 dB
SFO1 500.1315004 MHz

==== CHANNEL f2 =====
CPDPRG[2] garp
NUC2 13C
P3 12.70 usec
P4 25.40 usec
PCPD2 65.00 usec
PL2 -3.00 dB
PL12 11.67 dB
SFO2 125.7697360 MHz

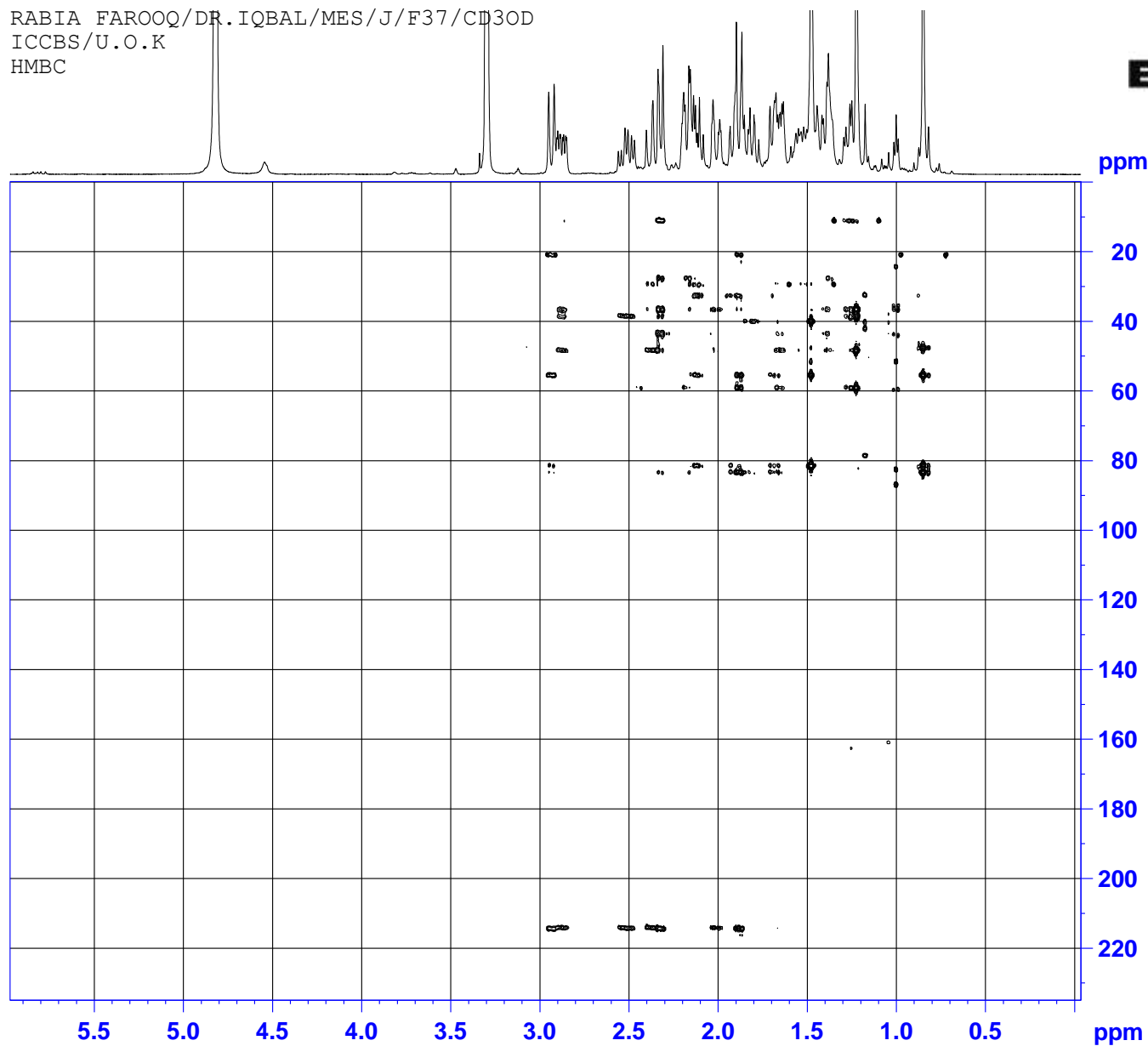
==== GRADIENT CHANNEL =====
GPNAM[1] SINE.100
GPNAM[2] SINE.100
GFZ1 80.00 %
GFZ2 20.10 %
P16 1000.00 usec

F1 - Acquisition parameters
TD 256
SFO1 125.7697 MHz
FIDRES 188.654602 Hz
SW 192.000 ppm
FnMODE Echo-Antiecho

F2 - Processing parameters
SI 1024
SF 500.1300158 MHz
WDW QSINE
SSB 2
LB 0 Hz
GB 0
PC 4.00

F1 - Processing parameters
SI 1024
MC2 echo-antiecho
SF 125.7576112 MHz
WDW QSINE
SSB 2
LB 0 Hz
GB 0

RABIA FAROOQ/DR. IQBAL/MES/J/F37/CD3OD
ICCBS/U.O.K
HMBC



Current Data Parameters
NAME compd 3
EXPNO 5
PROCNO 1

F2 - Acquisition Parameters
Date_ 20160608
Time 0.26
INSTRUM spect
PROBHD 5 mm BBI 1H/D-
PULPROG hmbcgp1pndqf
TD 2048
SOLVENT MeOD
NS 64
DS 8
SWH 3004.808 Hz
FIDRES 1.467191 Hz
AQ 0.3407872 sec
RG 20642.5
DW 166.400 usec
DE 6.50 usec
TE 300.2 K
CNST2 145.0000000
CNST13 10.0000000
D0 0.00000300 sec
D1 2.00000000 sec
D2 0.00344828 sec
D6 0.05000000 sec
D16 0.00020000 sec
IN0 0.00001690 sec

==== CHANNEL f1 =====
NUC1 1H
P1 8.00 usec
P2 16.00 usec
PL1 -1.00 dB
SFO1 500.1315004 MHz

==== CHANNEL f2 =====
NUC2 13C
P3 12.70 usec
PL2 -3.00 dB
SFO2 125.7723769 MHz

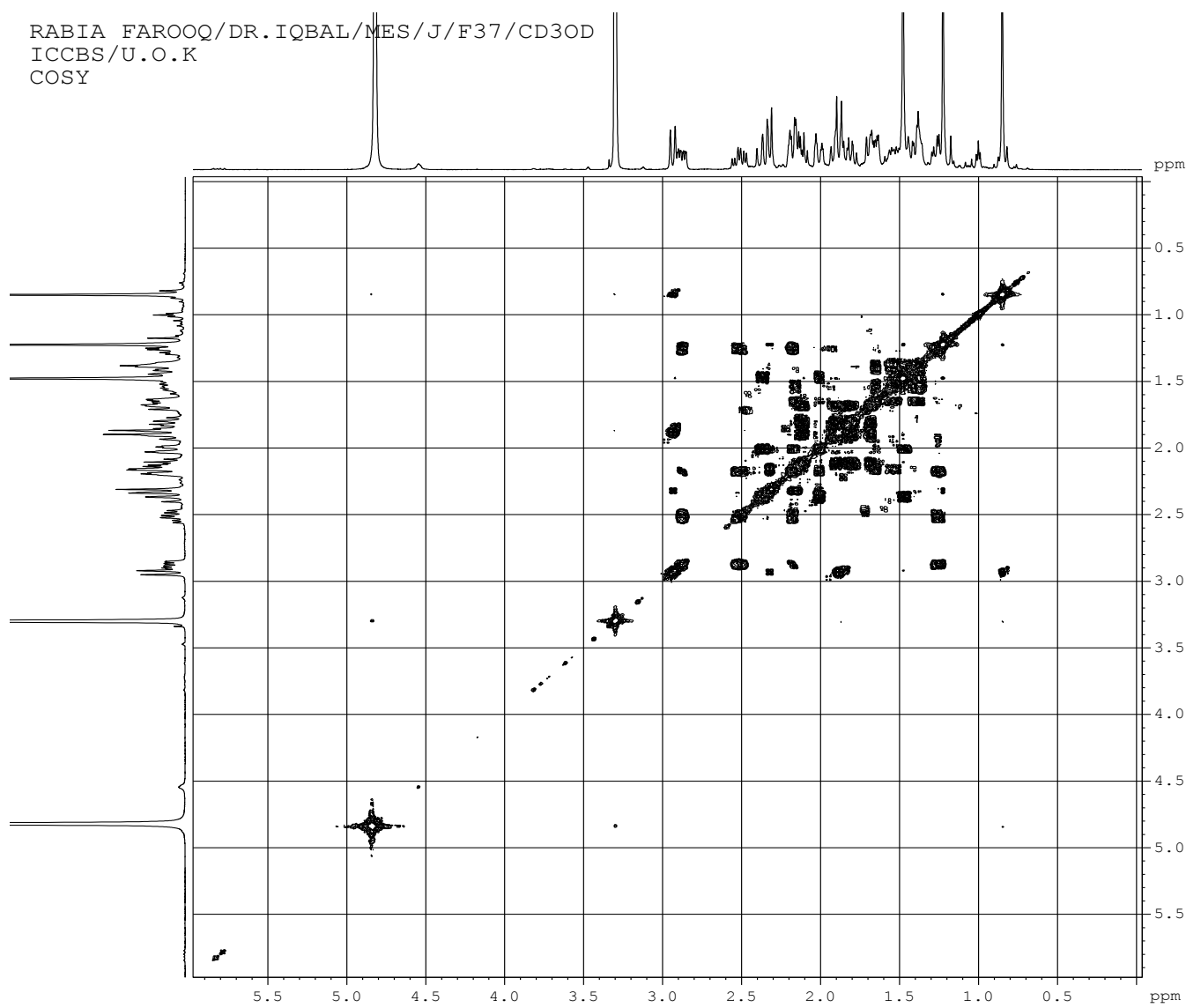
==== GRADIENT CHANNEL =====
GPNAM[1] SINE.100
GPNAM[2] SINE.100
GPNAM[3] SINE.100
GPZ1 50.00 %
GPZ2 30.00 %
GPZ3 40.10 %
P16 1000.00 usec

F1 - Acquisition parameters
TD 256
SFO1 125.7724 MHz
FIDRES 230.910217 Hz
SW 235.000 ppm
FMODE QF

F2 - Processing parameters
SI 1024
SF 500.1300158 MHz
WDW SINE
SSB 0
LB 0 Hz
GB 0
PC 4.00

F1 - Processing parameters
SI 1024
MC2 QF
SF 125.7576112 MHz
WDW SINE
SSB 0
LB 0 Hz
GB 0

RABIA FAROOQ/DR. IQBAL/MES/J/F37/CD3OD
ICCBS/U.O.K
COSY



```
Current Data Parameters
NAME      compd 3
EXPNO     2
PROCNO    1

F2 - Acquisition Parameters
Date_     20160607
Time      15.51
INSTRUM   spect
PROBHD    5 mm BBI 1H/D-
PULPROG   cosygpqf
TD         2048
SOLVENT   MeOD
NS         8
DS         8
SWH        3004.808 Hz
FIDRES     1.467191 Hz
AQ         0.3407872 sec
RG         362
DW         166.400 usec
DE         6.50 usec
TE         298.7 K
D0         0.00000300 sec
D1         1.50000000 sec
D13        0.00000400 sec
D16        0.00020000 sec
IN0        0.00033280 sec

===== CHANNEL f1 =====
NUC1       1H
P0         8.00 usec
P1         8.00 usec
PL1        -1.00 dB
SFO1       500.1315004 MHz

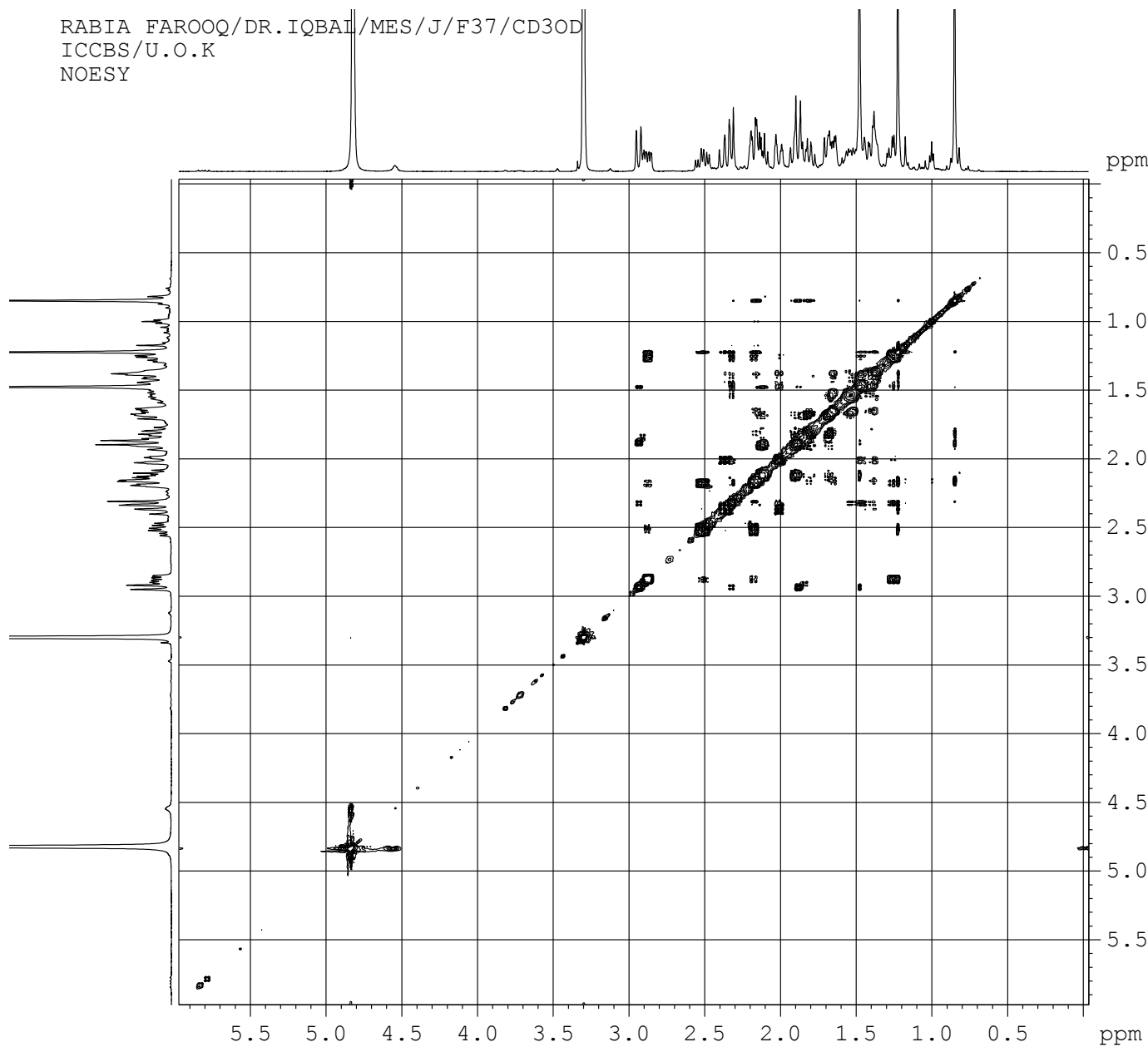
===== GRADIENT CHANNEL =====
GPNAM[1]   SINE.100
GP21       10.00 %
P16        1000.00 usec

F1 - Acquisition parameters
TD         256
SFO1       500.1315 MHz
FIDRES     23.475063 Hz
SW         6.008 ppm
FnMODE     QF

F2 - Processing parameters
SI         1024
SF         500.1300158 MHz
WDW        SINE
SSB        0
LB         0 Hz
GB         0
PC         4.00

F1 - Processing parameters
SI         1024
MC2        QF
SF         500.1300158 MHz
WDW        SINE
SSB        0
LB         0 Hz
GB         0
```

RABIA FAROOQ/DR. IQBAL/MES/J/F37/CD3OD
ICCBS/U.O.K
NOESY



Current Data Parameters
NAME compd 3
EXPNO 3
PROCNO 1

F2 - Acquisition Parameters
Date_ 20160607
Time 16.57
INSTRUM spect
PROBHD 5 mm BBI 1H/D-
PULPROG noesypph
TD 2048
SOLVENT MeOD
NS 16
DS 2
SWH 3004.808 Hz
FIDRES 1.467191 Hz
AQ 0.3407872 sec
RG 256
DW 166.400 usec
DE 6.50 usec
TE 299.1 K
D0 0.00015621 sec
D1 2.00000000 sec
D8 0.80000001 sec
D16 0.00020000 sec
IN0 0.00033280 sec

==== CHANNEL f1 =====
NUC1 1H
P1 8.00 usec
P2 16.00 usec
PL1 -1.00 dB
SFO1 500.1315004 MHz

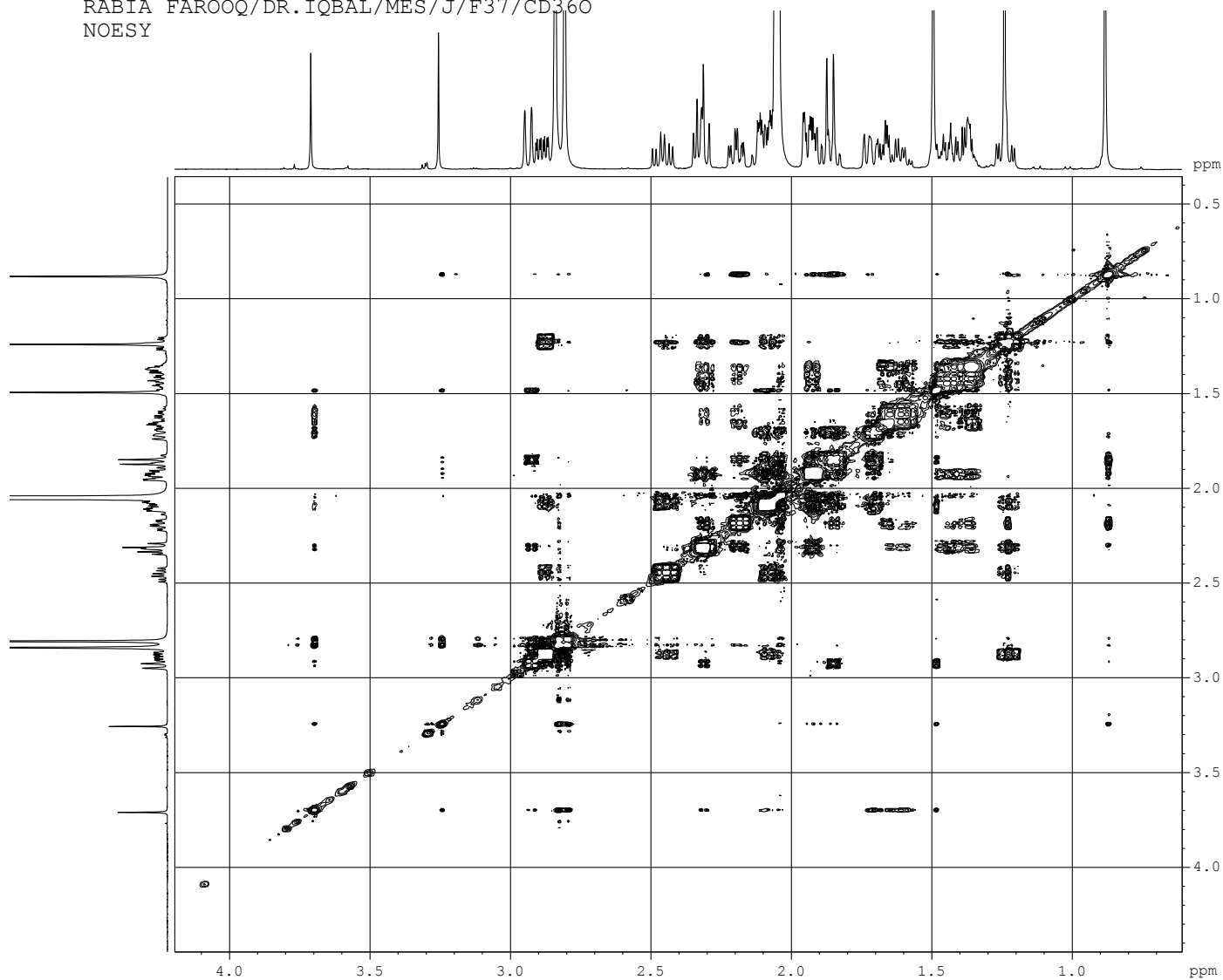
==== GRADIENT CHANNEL =====
GPNAM[1] SINE.100
GFZ1 40.00 %
P16 1000.00 usec

F1 - Acquisition parameters
TD 256
SFO1 500.1315 MHz
FIDRES 23.475063 Hz
SW 6.008 ppm
FnMODE States-TPPI

F2 - Processing parameters
SI 1024
SF 500.1300158 MHz
WDW QSINE
SSB 2
LB 0 Hz
GB 0
PC 4.00

F1 - Processing parameters
SI 1024
MC2 States-TPPI
SF 500.1300158 MHz
WDW QSINE
SSB 2
LB 0 Hz
GB 0

RABIA FAROOQ/DR. IQBAL/MES/J/F37/CD360
NOESY



Current Data Parameters
NAME mar14-18
EXPNO 4
PROCNO 1

F2 - Acquisition Parameters
Date_ 20180314
Time 17.50
INSTRUM spect
PROBHD 5 mm PABBI 1H/
PULPROG noesygpph
TD 2048
SOLVENT Acetone
NS 16
DS 8
SWH 3004.808 Hz
FIDRES 1.467191 Hz
AQ 0.3407872 sec
RG 1024
DW 166.400 usec
DE 6.50 usec
TE 297.3 K
DO 0.00015475 sec
D1 2.00000000 sec
D8 0.80000001 sec
D16 0.00020000 sec
IN0 0.00033280 sec

===== CHANNEL f1 =====
NUC1 1H
P1 9.15 usec
P2 18.30 usec
PL1 -0.50 dB
SFO1 500.2315007 MHz

===== GRADIENT CHANNEL =====
GPNAM[1] SINE.100
GPNAM[2] SINE.100
GPZ1 40.00 %
GPZ2 -40.00 %
P16 1000.00 usec

F1 - Acquisition parameters
TD 256
SFO1 500.2315 MHz
FIDRES 23.475063 Hz
SW 6.007 ppm
FnMODE States-TPPI

F2 - Processing parameters
SI 1024
SF 500.2300110 MHz
WDW QSINE
SSB 2
LB 0 Hz
GB 0
PC 1.00

F1 - Processing parameters
SI 1024
MC2 States-TPPI
SF 500.2300110 MHz
WDW QSINE
SSB 2
LB 0 Hz
GB 0