

File: MES-L-F31-1
Sample: RABIA FAROOQ / DR. M. IQBAL
Instrument: JEOL MS 600H-1

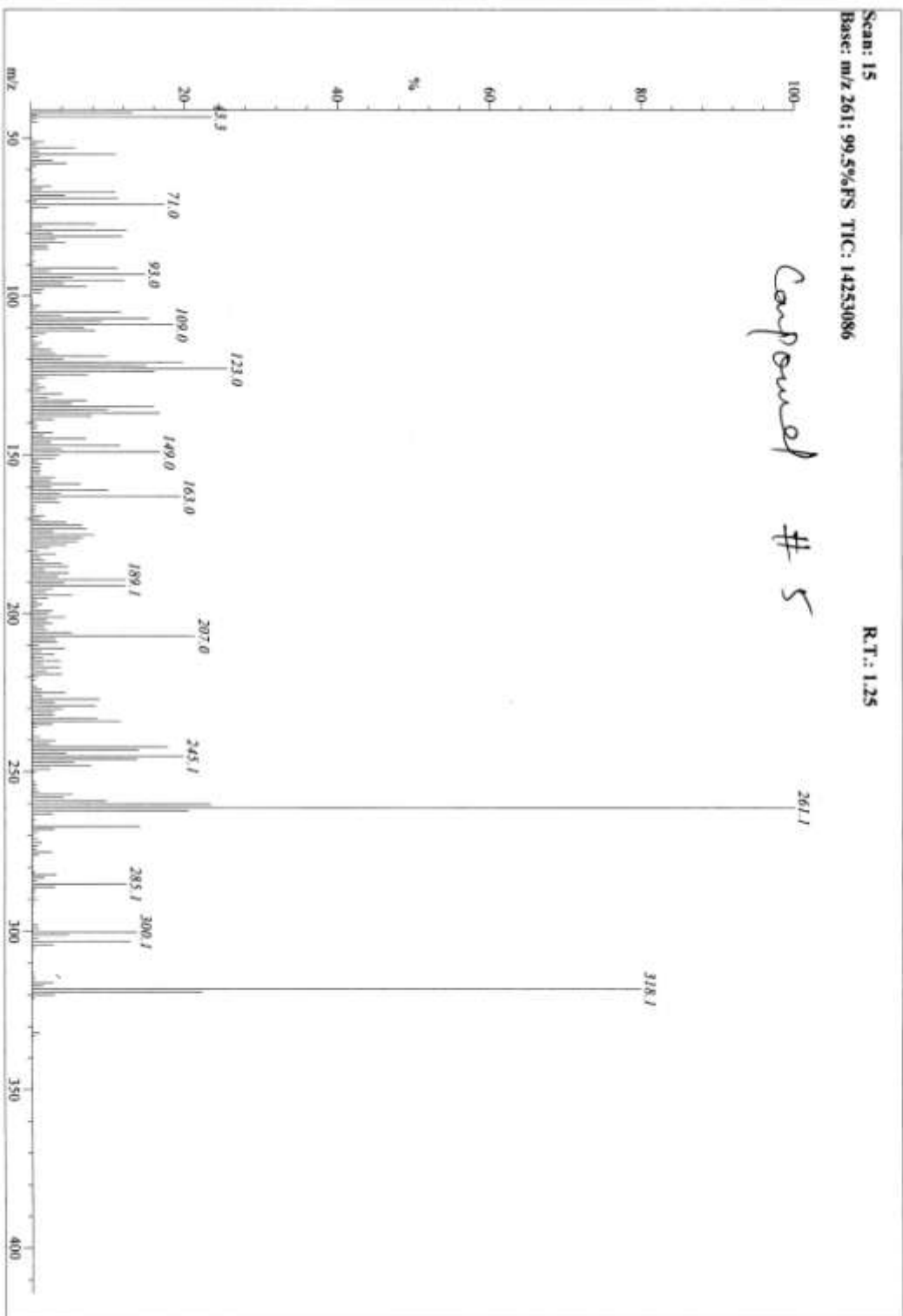
Date Run: 01-13-2016 (Time Run: 09:39:02)

Ionization mode: EI+

Scan: 15
Base: m/z 261: 99.5%FS TIC: 14253086

R.T.: 1.25

Compound # 5



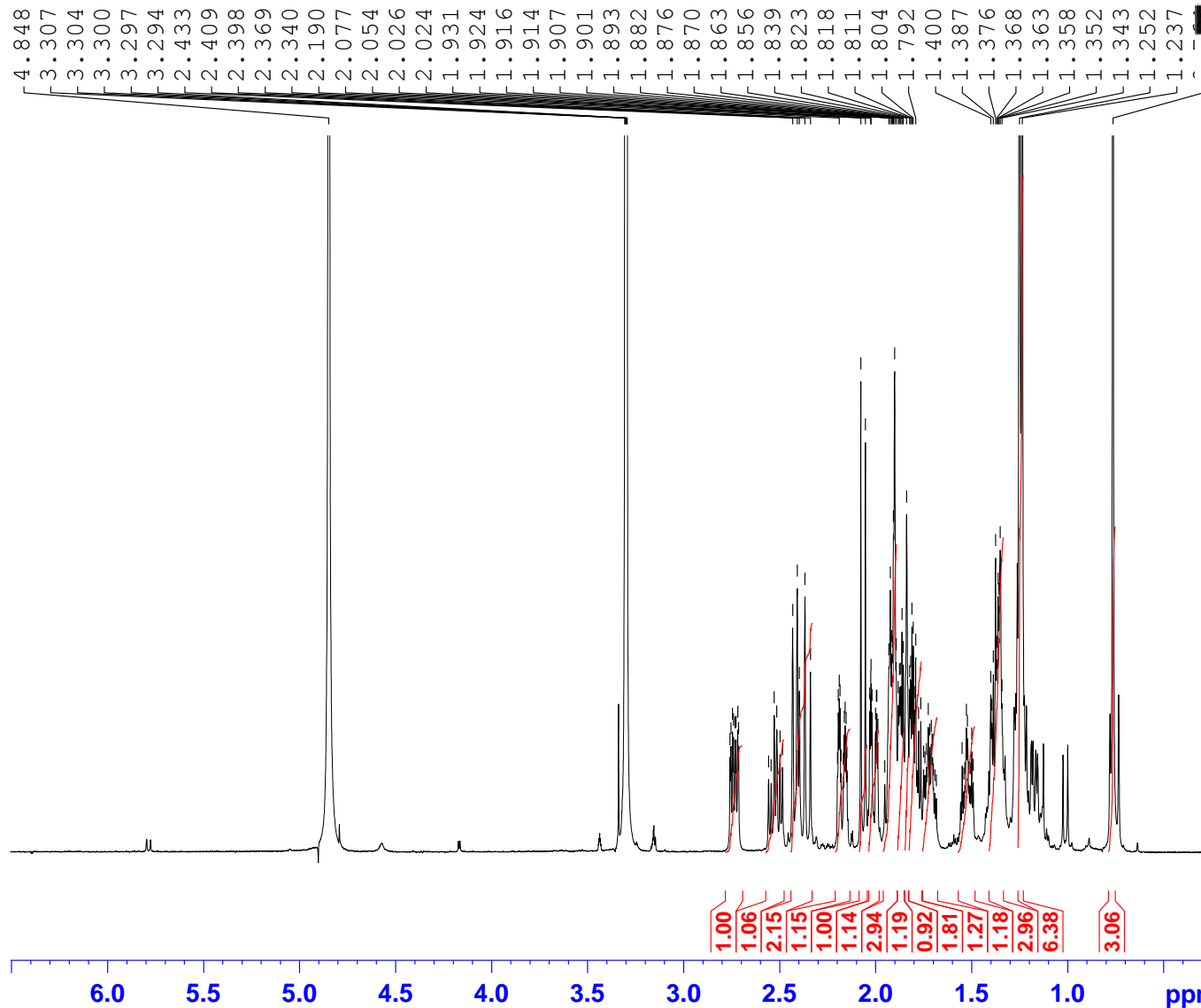
MESU / F 31-1
 Kaban 5/15/2017

Mass	Theoretical Mass	Delta [ppm]	Delta [amu]	qM	Composition
318.2212	318.2189	7.1	2.3	6.0	C ₂₀ H ₃₆ O ₂
303.1931	303.1955	-7.8	-2.4	6.5	C ₁₈ H ₃₁ O ₂
300.2097	300.2084	4.4	1.3	7.0	C ₂₀ H ₃₄ O ₂

Compound # 5

Substrate
 200
 C₂₀H₃₂O₂

RABIA FAROOQ/DR. IQBAL/MES/J/F31-1/CD3OD



Current Data Parameters
NAME com 5
EXPNO 2
PROCNO 1

F2 - Acquisition Parameters
Date_ 20151216
Time 18.26
INSTRUM spect
PROBHD 5 mm PABBI 1H/
PULPROG zg30
TD 65536
SOLVENT MeOD
NS 64
DS 0
SWH 12019.230 Hz
FIDRES 0.183399 Hz
AQ 2.7262976 sec
RG 228.1
DW 41.600 usec
DE 6.50 usec
TE 298.1 K
D1 1.50000000 sec
TD0 1

==== CHANNEL f1 =====
NUC1 1H
P1 8.03 usec
PL1 3.00 dB
SFO1 500.2350023 MHz

F2 - Processing parameters
SI 32768
SF 500.2300118 MHz
WDW EM
SSB 0
LB 0.30 Hz
GB 0
PC 1.00