

5/23/2016 9:42:30 AM

File: MES-1-F34-1

Date Run: 05-23-2016 (Time Run: 09:31:17)

Sample: RABIA FAROOQ / DR. M. IQBAL

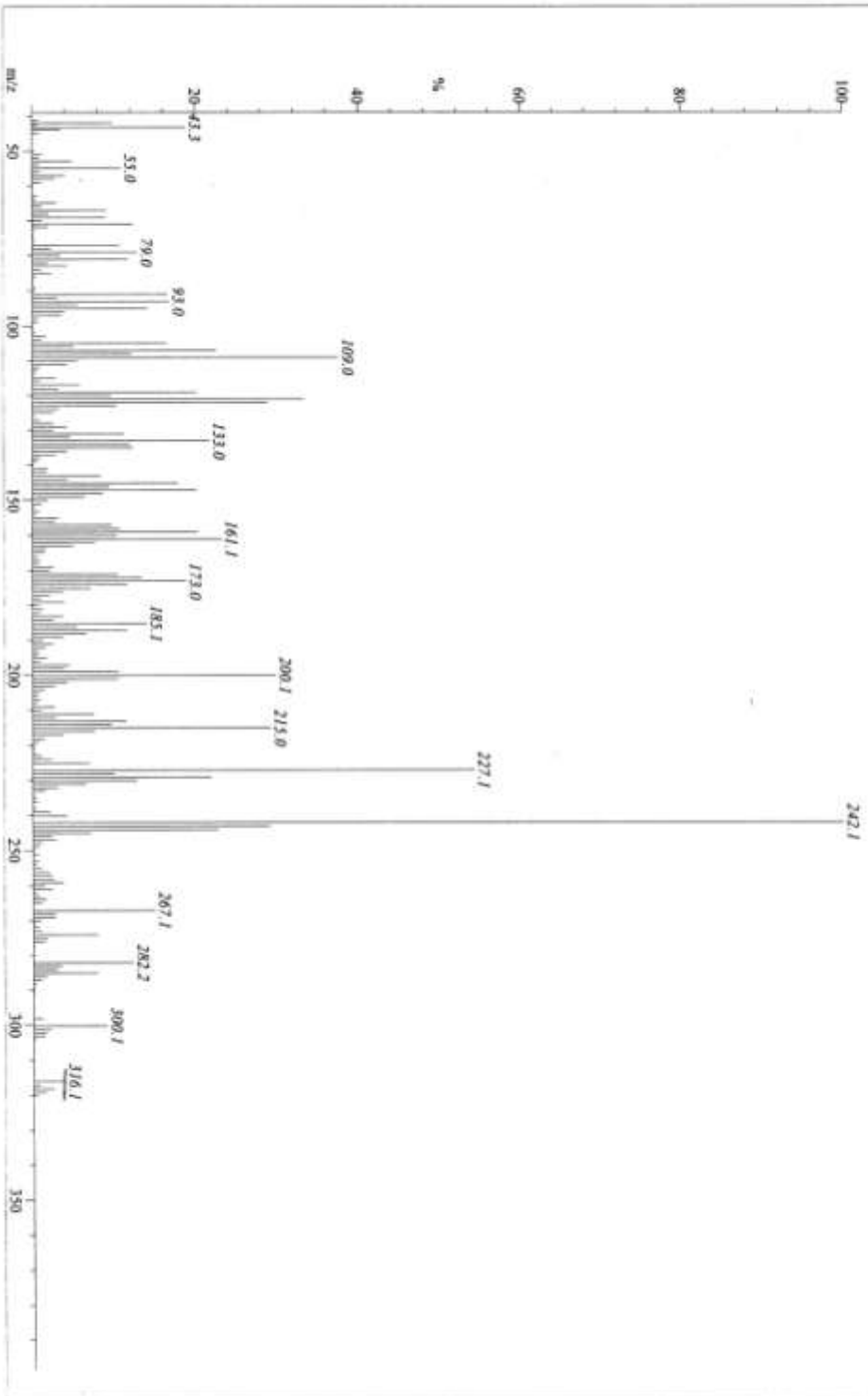
Ionization mode: EI+

Compound # 6

Scan: 45

R.T.: 3.88

Base: m/z 242; 62.2%FS TIC: 9234000

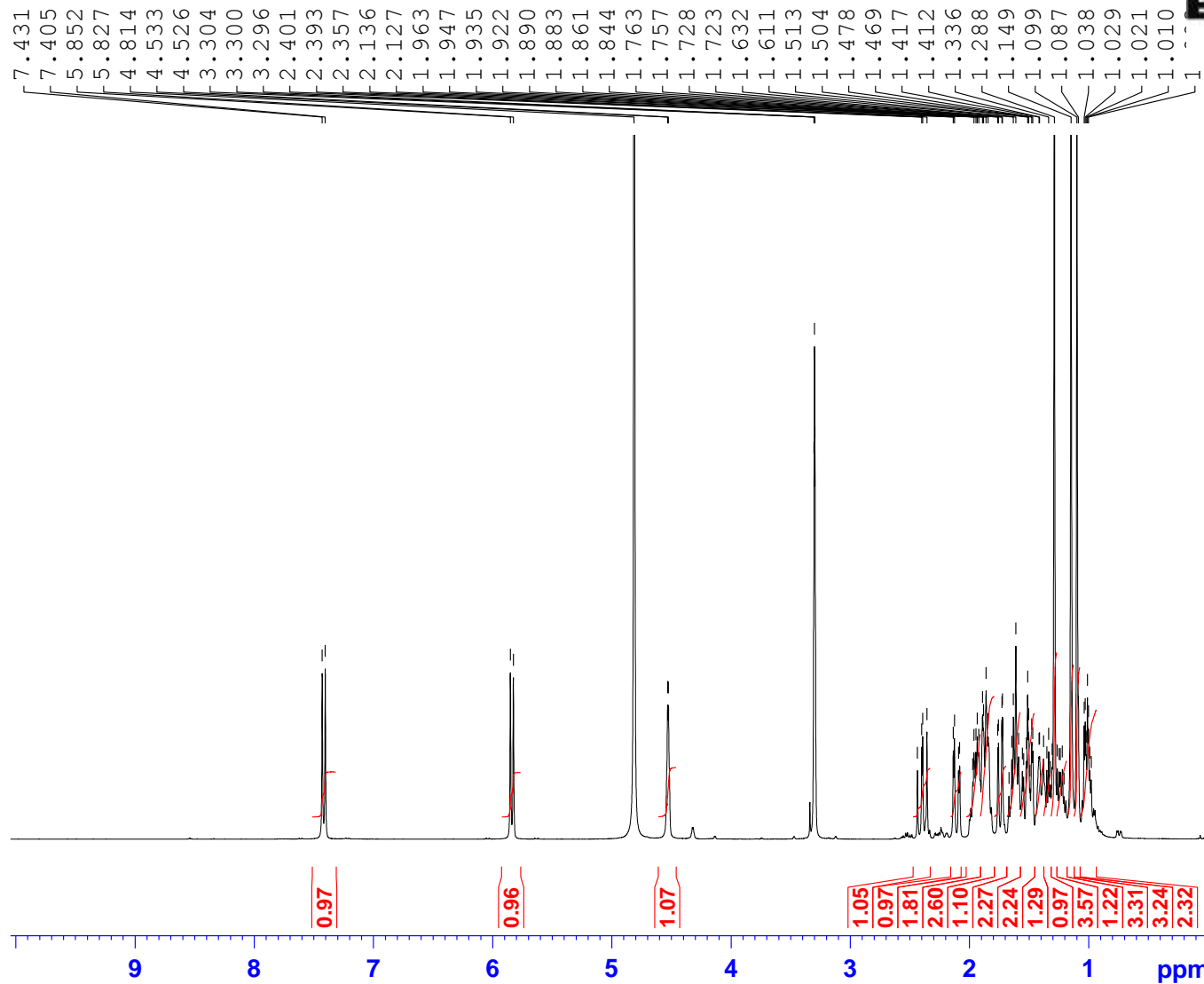


Compound # 6

Mass	Relative Intensity	Theoretical Mass	Delta [ppm]	Delta [mm]	RDB	Composition
277.2078	0.4	277.2015	22.6	6.3	0.5	C ₁₄ H ₁₈ O ₂
277.2827	0.7	277.2895	-24.6	-6.9	2.5	C ₁₄ H ₁₈ O ₂
278.1634	0.4	278.1671	-13.3	-3.7	10.0	C ₁₄ H ₁₈ O ₂
278.2216	0.2	278.2246	-10.6	-2.9	4.0	C ₁₄ H ₁₈ O ₂
279.2964	0.3	279.2974	-3.5	-1.0	2.0	C ₁₄ H ₁₈ O ₂
279.1622	0.8	279.1596	9.3	2.6	5.5	C ₁₄ H ₁₈ O ₂
279.2960	0.4					
280.1822	1.4	280.1827	-1.8	-0.5	9.0	C ₁₄ H ₁₈ O ₂
280.3147	0.4	280.3130	5.9	1.7	1.0	C ₁₄ H ₁₈ O ₂
281.0567	0.5	281.0603	-12.5	-3.5	16.5	C ₁₄ H ₁₈ O ₂
281.1941	1.6	281.1905	12.6	3.5	8.5	C ₁₄ H ₁₈ O ₂
281.3236	0.4	281.3208	3.8	2.8	0.5	C ₁₄ H ₁₈ O ₂
282.0753	0.3	282.0681	25.7	7.2	16.0	C ₁₄ H ₁₈ O ₂
282.1246	0.3	282.1256	-3.6	-1.0	10.0	C ₁₄ H ₁₈ O ₂
282.1993	51.7	282.1984	3.3	0.9	8.0	C ₁₄ H ₁₈ O ₂
283.2026	14.1	283.2062	-12.6	-3.6	7.5	C ₁₄ H ₁₈ O ₂
284.2136	11.8	284.2140	-1.5	-0.4	7.0	C ₁₄ H ₁₈ O ₂
285.1887	14.9	285.1855	11.3	3.2	7.5	C ₁₄ H ₁₈ O ₂
286.1921	5.0	286.1932	-4.0	-1.1	7.0	C ₁₄ H ₁₈ O ₂
287.1930	1.9	287.2011	-21.1	-6.1	6.5	C ₁₄ H ₁₈ O ₂
287.2700	0.7	287.2739	-13.4	-3.8	4.5	C ₁₄ H ₁₈ O ₂
288.2134	0.7	288.2089	13.5	4.5	6.0	C ₁₄ H ₁₈ O ₂
288.2761	0.4	288.2817	-19.3	-5.6	4.0	C ₁₄ H ₁₈ O ₂
289.1143	0.2	289.1229	-22.8	-6.6	12.5	C ₁₄ H ₁₈ O ₂
289.1076		289.1076	29.9	8.7	8.5	C ₁₄ H ₁₈ O ₂
289.2929	0.5	289.2895	11.7	3.4	3.5	C ₁₄ H ₁₈ O ₂
290.2959	0.2	290.2974	-5.0	-1.5	3.0	C ₁₄ H ₁₈ O ₂
292.3198	0.2	292.3130	23.4	6.8	2.0	C ₁₄ H ₁₈ O ₂
293.3191	0.3	293.3208	-6.0	-1.8	1.5	C ₁₄ H ₁₈ O ₂
295.1050	0.2	295.1123	-24.5	-7.2	15.5	C ₁₄ H ₁₈ O ₂
295.0970		295.0970	27.2	8.0	11.5	C ₁₄ H ₁₈ O ₂
296.1973	0.2	296.1988	-5.0	-1.5	4.0	C ₁₄ H ₁₈ O ₂
296.2075	0.2	296.2140	-22.0	-6.5	8.0	C ₁₄ H ₁₈ O ₂
296.1988		296.1988	29.5	8.8	4.0	C ₁₄ H ₁₈ O ₂
298.1923	1.3	298.1933	-3.4	-1.0	8.0	C ₁₄ H ₁₈ O ₂
299.2046	0.5	299.2011	11.8	3.5	7.5	C ₁₄ H ₁₈ O ₂
299.2665	0.2	299.2739	-24.5	-7.3	5.5	C ₁₄ H ₁₈ O ₂
299.2586		299.2586	26.4	7.9	1.5	C ₁₄ H ₁₈ O ₂
300.2098	10.0	300.2089	3.1	0.9	7.0	C ₁₄ H ₁₈ O ₂
301.2142	3.7	301.2168	-8.4	-2.5	6.5	C ₁₄ H ₁₈ O ₂
301.2827	0.4	301.2895	-22.5	-6.8	4.9	C ₁₄ H ₁₈ O ₂
301.2743		301.2743	28.1	8.5	0.5	C ₁₄ H ₁₈ O ₂
302.2241	1.9	302.2246	-1.5	-0.4	6.0	C ₁₄ H ₁₈ O ₂
302.9723	0.3					
303.2044	0.9	303.2113	-22.5	-6.8	10.5	C ₁₄ H ₁₈ O ₂
303.1960		303.1960	27.8	8.4	6.5	C ₁₄ H ₁₈ O ₂
303.2171	0.9	303.2171	0.0	0.0	1.5	C ₁₄ H ₁₈ O ₂
303.2113		303.2113	19.4	5.9	10.5	C ₁₄ H ₁₈ O ₂
303.3034	0.3	303.3052	-6.0	-1.8	3.5	C ₁₄ H ₁₈ O ₂
304.1996	0.4	304.2038	-14.0	-4.3	6.0	C ₁₄ H ₁₈ O ₂
304.3142	0.2	304.3130	4.0	1.2	3.0	C ₁₄ H ₁₈ O ₂
305.3233	0.5	305.3208	8.0	2.4	2.9	C ₁₄ H ₁₈ O ₂
309.2359	0.2	309.2430	-23.0	-7.1	3.5	C ₁₄ H ₁₈ O ₂
309.2568	0.2	309.2592	-4.5	-1.4	7.5	C ₁₄ H ₁₈ O ₂
309.3567	0.3	309.3521	14.8	4.6	0.5	C ₁₄ H ₁₈ O ₂
313.2888	0.3	313.2895	-2.3	-0.7	5.5	C ₁₄ H ₁₈ O ₂
315.3099	0.4	315.3052	14.9	4.7	4.5	C ₁₄ H ₁₈ O ₂
316.2063	0.2	316.2038	7.7	2.4	7.0	C ₁₄ H ₁₈ O ₂
316.3027	0.3	316.2977	15.7	5.0	0.0	C ₁₄ H ₁₈ O ₂
317.2026	0.2	317.2117	-28.5	-9.0	6.5	C ₁₄ H ₁₈ O ₂
317.3164	0.6	317.3208	-14.0	-4.4	3.5	C ₁₄ H ₁₈ O ₂
317.9950	0.3	317.9953	-1.0	-0.3	21.0	C ₁₄ H ₁₈ O ₂
318.2238	1.6	318.2195	13.4	4.3	6.0	C ₁₄ H ₁₈ O ₂
318.3301	0.2	318.3287	4.6	1.4	3.0	C ₁₄ H ₁₈ O ₂
319.2245	1.0	319.2273	-9.0	-2.9	5.5	C ₁₄ H ₁₈ O ₂
319.3322	0.5	319.3365	-13.3	-4.3	2.5	C ₁₄ H ₁₈ O ₂
320.2360	0.4	320.2351	2.6	0.8	5.0	C ₁₄ H ₁₈ O ₂
320.3477	0.4	320.3443	10.6	3.4	2.0	C ₁₄ H ₁₈ O ₂
322.3619	0.3	322.3600	5.9	1.9	1.0	C ₁₄ H ₁₈ O ₂
327.3014	0.2	327.3052	-11.5	-3.8	5.5	C ₁₄ H ₁₈ O ₂

RABIA/DR.IQBAL/MES.I.F.34.1

1H



Current Data Parameters
NAME compound 6
EXPNO 4
PROCNO 1

F2 - Acquisition Parameters
Date_ 20160422
Time_ 15.13
INSTRUM spect
PROBHD 5 mm SEI 1H-13
PULPROG zg30
TD 65536
SOLVENT MeOD
NS 128
DS 0
SWH 8012.820 Hz
FIDRES 0.122266 Hz
AQ 4.0894465 sec
RG 90.5
DW 62.400 usec
DE 6.50 usec
TE 300.0 K
D1 2.00000000 sec
TD0 1

==== CHANNEL f1 =====
NUC1 1H
P1 10.80 usec
PL1 3.00 dB
SFO1 400.0332002 MHz

F2 - Processing parameters
SI 32768
SF 400.0300087 MHz
WDW EM
SSB 0
LB 0.30 Hz
GB 0
PC 0.20