

Supporting Information

Single-Crystalline Perovskite Wafers with Cr blocking layer for Broad and Stable Light Detection in Harsh Environment

Qian Wang^{1,#}, Dongliang Bai^{1,#}, Zhiwen Jin^{1,*}, and Shengzhong (Frank) Liu^{1,2,*}

These authors contributed equally to this work.

¹Key Laboratory of Applied Surface and Colloid Chemistry, Ministry of Education; Shaanxi Key Laboratory for Advanced Energy Devices; Shaanxi Engineering Lab for Advanced Energy Technology; School of Materials Science & Engineering, Shaanxi Normal University, Xi'an, 710119, P. R. China.

E-mail: jinzhiwen@snnu.edu.cn

²Dalian National Laboratory for Clean Energy; iChEM, Dalian Institute of Chemical Physics, Chinese Academy of Sciences, Dalian, 116023, P. R. China

E-mail: szliu@dicp.ac.cn

Keywords: single crystal, perovskite, wafer, photodetector, stability



Figure S1. Photograph for the as-grown single crystals perovskite wafer.

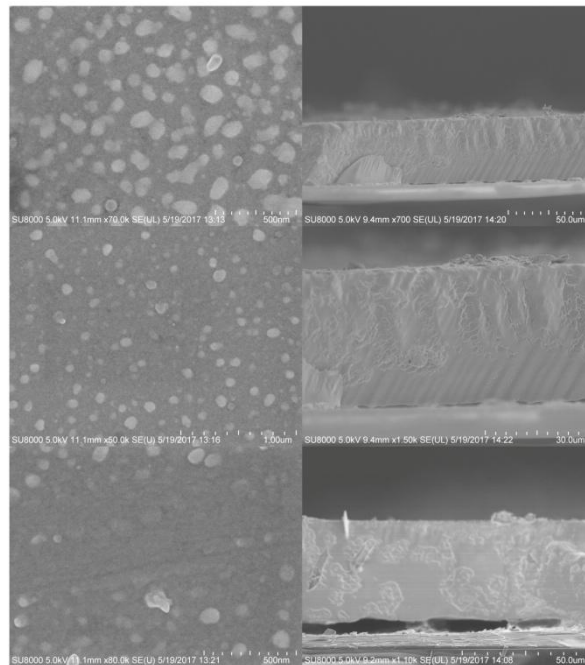


Figure S2. Surface and cross-section SEM images for the wafer at different parts.

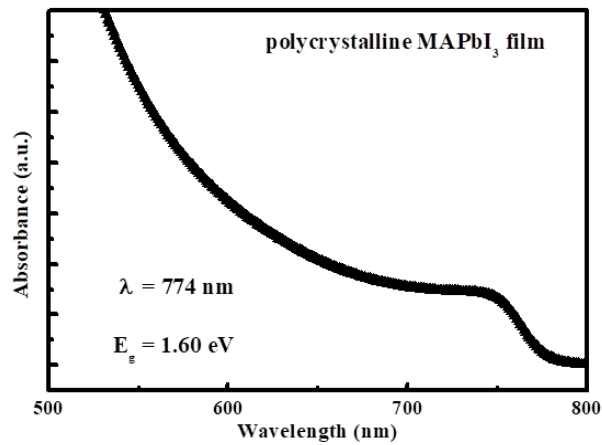


Figure S3. Absorption spectrum of the polycrystalline MAPbI₃ film.