

Supporting Information

Improving the Photocatalytic Reduction of CO₂ to CO for TiO₂ Hollow Sphere through Hybridization with Cobalt Complex

Jinliang Lin^{a*}, Xiaoxiang Sun^b, Biao Qin^a and Ting Yu^a

^a Department of Chemical and Engineering, Zunyi Normal College, 563000, Zunyi, P.R. China.

^b Department of Chemical and Engineering, Qiannan Normal University for Nationalities, 558000, Duyun, P.R. China.

Email: jinliang_lin@163.com

Contents

Fig. S1 SEM images of bTiO₂ and Energy-dispersive X-ray spectroscopy (EDS) of the as-prepared bTiO₂.

Fig. S2 Mapping of the as-prepared bTiO₂.

Fig. S3 SEM images of sTiO₂ and Energy-dispersive X-ray spectroscopy (EDS) of the as-prepared sTiO₂.

Fig. S4 Mapping of the as-prepared sTiO₂.

Fig. S5 SEM images of sTiO₂ sample after reaction and Energy-dispersive X-ray spectroscopy (EDS) of the as-prepared sTiO₂ sample after reaction.

Fig. S6 Mapping of the as-prepared sTiO₂ sample after reaction.

Table S1 Element contents in bTiO₂ sample.

Table S2 Element contents in sTiO₂ sample.

Table S3 Element contents in sTiO₂ sample after reaction.

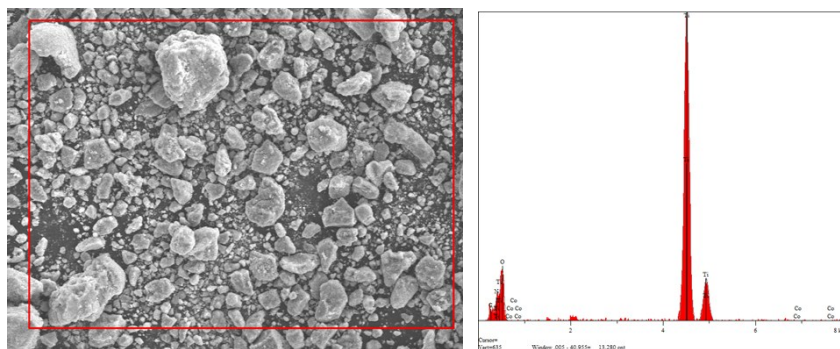


Fig. S1 SEM images of bTiO₂(left) and Energy-dispersive X-ray spectroscopy (EDS) of the as-prepared bTiO₂(right).

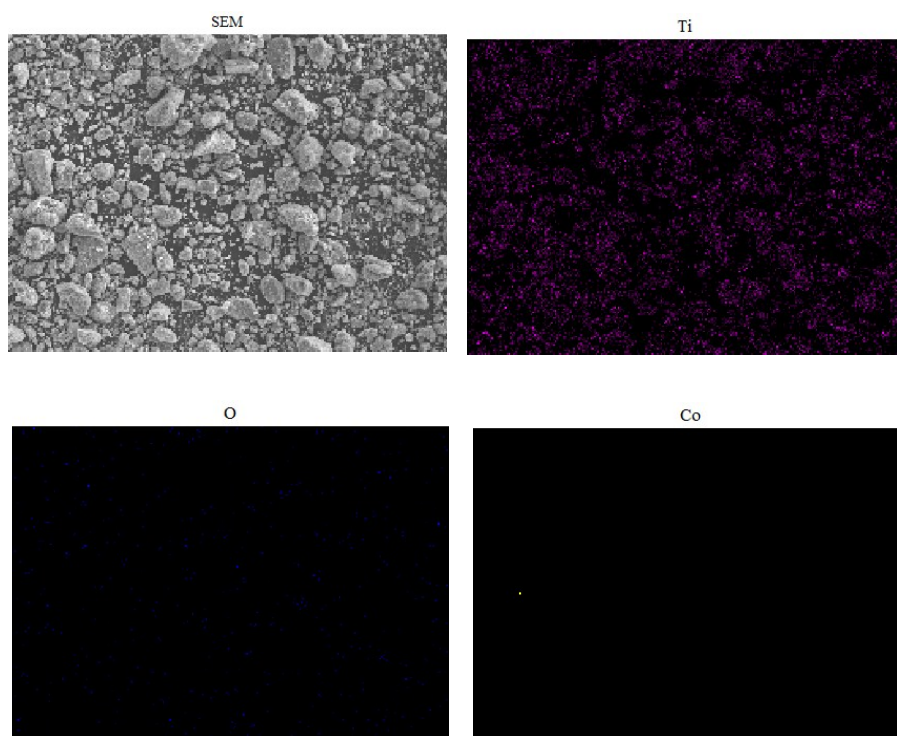


Fig. S2 Mapping of the as-prepared bTiO₂.

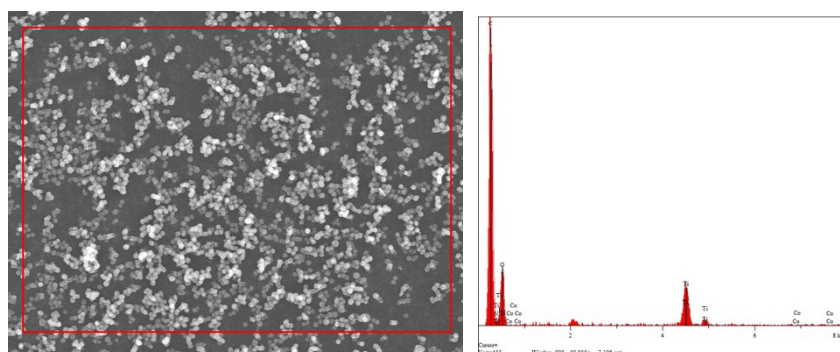


Fig. S3 SEM images of sTiO₂(left) and Energy-dispersive X-ray spectroscopy (EDS) of the as-prepared sTiO₂(right).

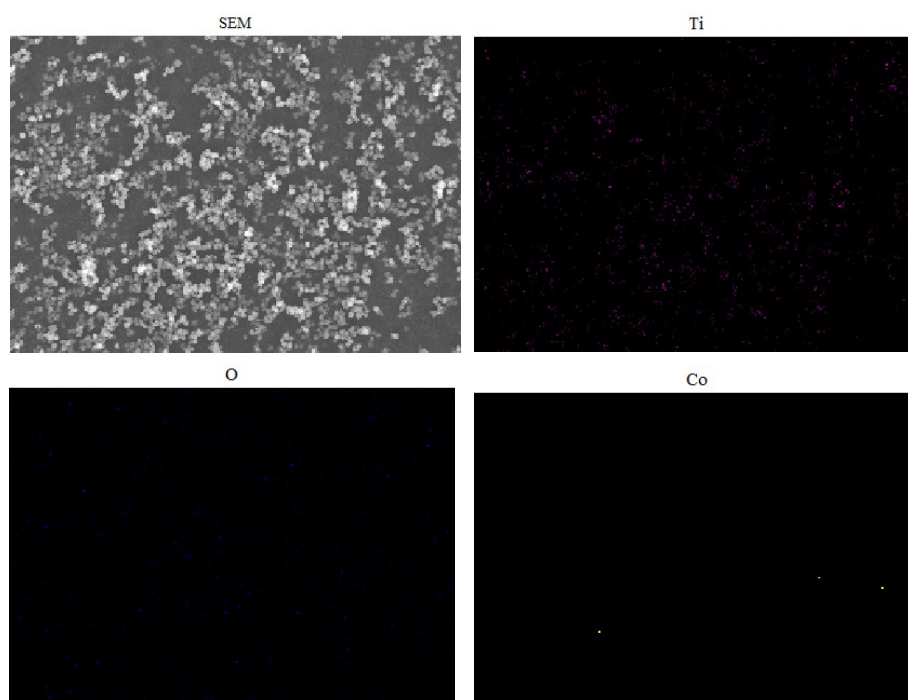


Fig. S4 Mapping of the as-prepared sTiO₂.

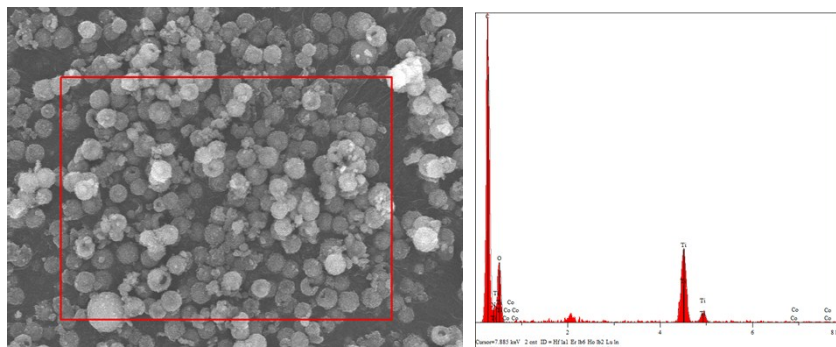


Fig. S5 SEM images of sTiO₂ sample after reaction(left) and Energy-dispersive X-ray spectroscopy (EDS) of the as-prepared sTiO₂ sample after reaction (right).

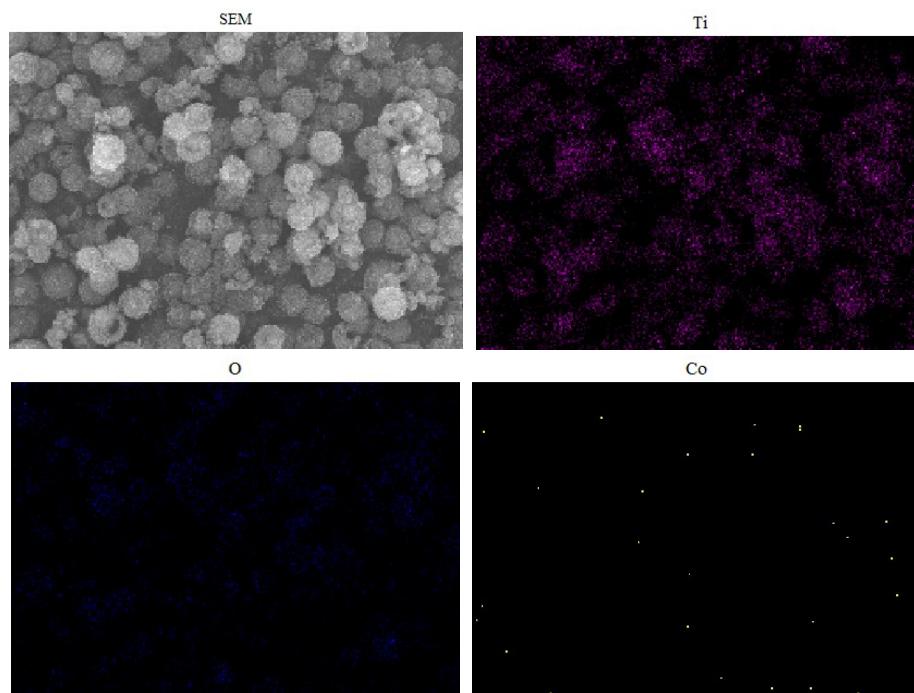


Fig. S6 Mapping of the as-prepared sTiO₂ sample after reaction.

Table S1 Element contents in bTiO₂ sample.

Elt.	Line	Intensity (c/s)	Conc	Units	Error 2-sig	MDL 3-sig	
C	Ka	28.77	4.982	wt.%	0.852	0.945	
N	Ka	0.27	0.226	wt.%	0.612	0.708	
O	Ka	42.95	28.825	wt.%	3.138	2.402	
Ti	Ka	876.42	65.205	wt.%	1.417	.394	
Co	Ka	0.38	0.062	wt.%	0.344	0.517	
			100.000	wt.%			Total

Table S2 Element contents in sTiO₂ sample.

Elt.	Line	Intensity (c/s)	Conc	Units	Error 2-sig	MDL 3-sig	
C	Ka	371.37	54.036	wt.%	1.838	0.742	
N	Ka	0.00	0.000	wt.%	0.000	0.000	
O	Ka	68.87	36.816	wt.%	3.014	1.684	
Ti	Ka	86.61	8.823	wt.%	0.630	0.296	
Co	Ka	1.53	0.325	wt.%	0.305	0.391	
			100.000	wt.%			Total

Table S3 Element contents in sTiO₂ sample after reaction.

Elt.	Line	Intensity (c/s)	Conc	Units	Error 2-sig	MDL 3-sig	
C	Ka	384.93	52.819	wt.%	1.722	0.403	
N	Ka	0.00	0.000	wt.%	0.000	0.000	
O	Ka	56.53	31.677	wt.%	2.801	1.328	
Ti	Ka	165.14	15.261	wt.%	0.771	0.268	
Co	Ka	1.25	0.243	wt.%	0.348	0.490	
			100.000	wt.%			Total