

## Supplemental Information

Feasibility of polyethylene composites reinforced by distillers dried fibers with  
soluble (DDFS) after different generations of ethanol fermentation

Bo Chen<sup>a</sup>, Xiaotong Shen<sup>a</sup>, Zhangfeng Luo<sup>a</sup>, Huidong Chen<sup>b,c</sup>, Di Cai<sup>a\*</sup>, Changjing  
Chen<sup>a</sup>, Changwei Zhang<sup>a</sup>, Peiyong Qin<sup>a</sup>, Hui Cao<sup>a\*</sup>, Tianwei Tan<sup>a</sup>

\* Corresponding authors

Address: No.15 Beisanhuan East Road, Chaoyang District, Beijing, 100029.

Email: caidibuct@163.com; caohui@mail.buct.edu.cn

<sup>a</sup> National Energy R&D Center for Biorefinery, Beijing University of Chemical  
Technology, Beijing 100029, PR China

<sup>b</sup> College of Chemical Engineering, Beijing University of Chemical Technology,  
Beijing 100029, PR China

<sup>c</sup> Center for Process Simulation & Optimization, Beijing University of Chemical  
Technology, Beijing 100029, PR China

## Figure captions

Fig.S1 Comparison of the reinforcing DDFSs properties. (a) FT-IR; (b) XRD.

Fig.S2 TGA thermograms of the DDFSs reinforced polyethylene composites (a) TG curves; (b) DTG curves.

Fig.S3 The melting point temperatures and the crystallization peak temperatures of the DDFS reinforced polyethylene composites. (a) The melting point temperatures; (b) Crystallization peak temperatures.

Fig.S4 SEM images of the DDFS reinforced polyethylene composites before weathering.

Fig.S5 SEM images of the DDFS reinforced polyethylene composites after weathering.

Fig.S1

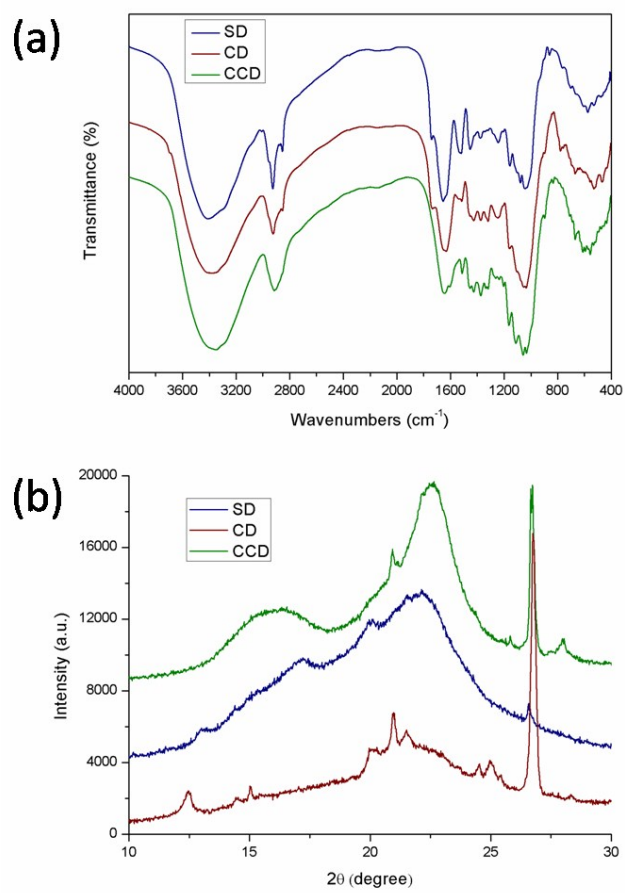


Fig.S2

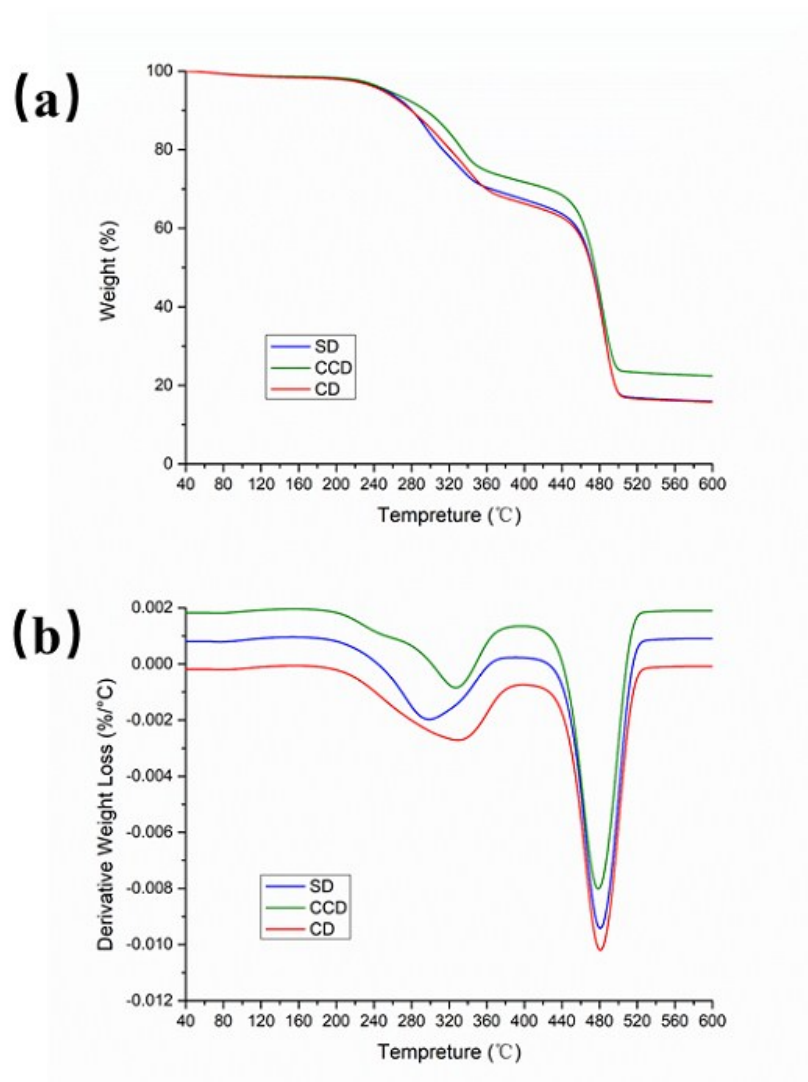


Fig.S3

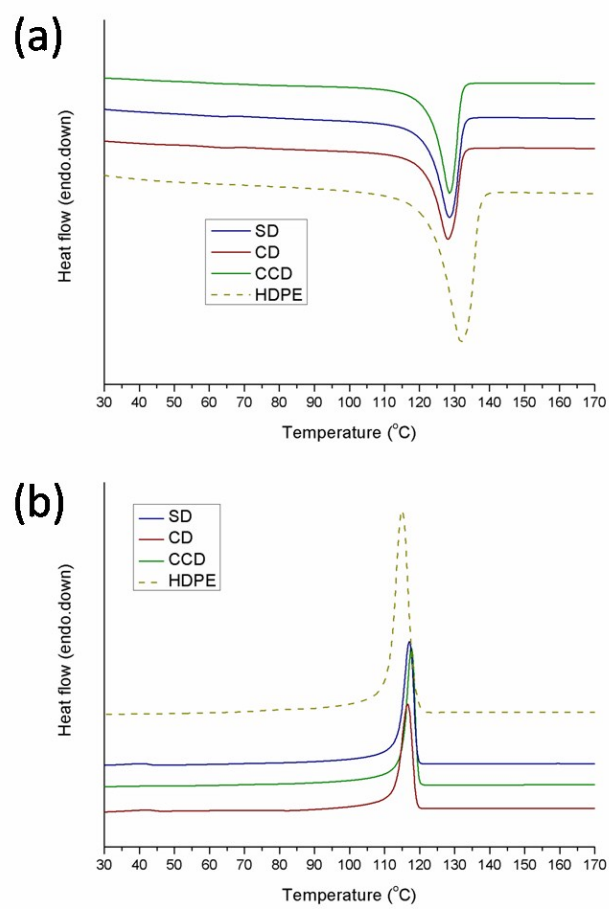


Fig.S4

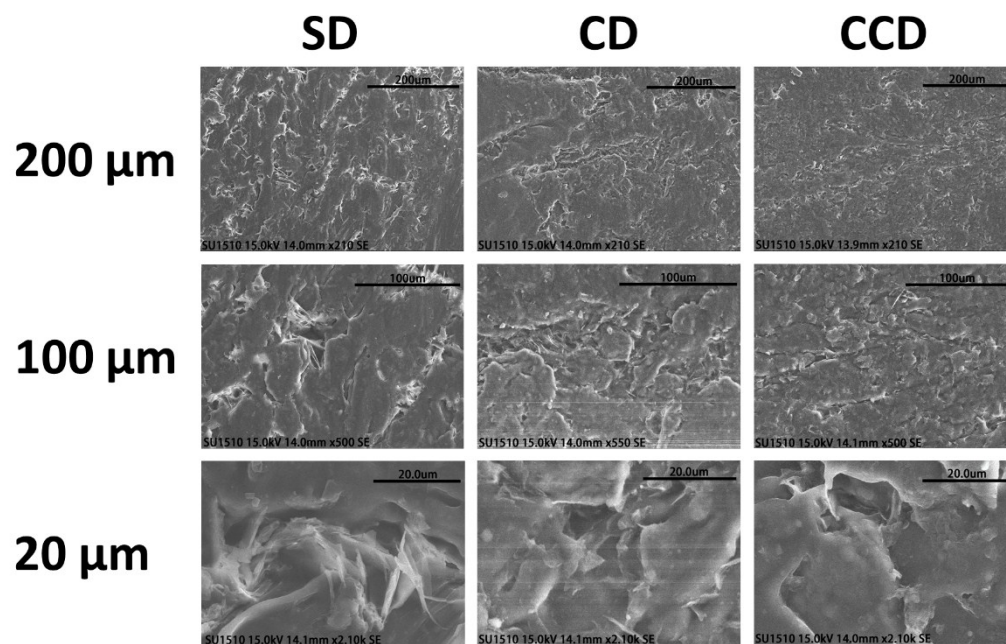


Fig.S5

