

SUPPLEMENTARY MATERIAL

Chemical studies on the parasitic plant *Thonningia sanguinea* Vahl†

Ama Kyeraa Thomford^{ab}, Reda Foud Ahmed Abdelhameed,^{ac} and Koji Yamada^{*a}

^aGraduate School of Biomedical Sciences, Nagasaki University, Bunkyo-machi 1-14, Nagasaki 852-8521, Japan.

^bDepartment of Biomedical Sciences, School of Allied Health Sciences, University of Cape Coast, Ghana.

^cDepartment of Pharmacognosy, Faculty of Pharmacy, Suez Canal University, 41522 Ismailia, Egypt.

*corresponding author

Email: kyamada@nagasaki-u-ac.jp

LIST OF FIGURES

Page No.

Figure S1a. ¹ H NMR spectrum of 1 (Chloroform- <i>d</i> , 300 MHz) β-Sitosteryl-3β-D-glucopyranoside-6- <i>O</i> -palmitate.....	3
Figure S1b. ¹³ C NMR spectrum of 1 (Chloroform- <i>d</i> , 100 MHz) β-Sitosteryl-3β-D-glucopyranoside-6- <i>O</i> -palmitate.....	3
Figure S2a. ¹ H NMR spectrum of 2 (Pyridine- <i>d</i> ₅ , 300 MHz) β-Sitosterol.....	4
Figure S2b. ¹³ C NMR spectrum of 2 (Pyridine- <i>d</i> ₅ , 100 MHz) β-Sitosterol.....	4
Figure S3a. ¹ H NMR spectrum of 3 (Pyridine- <i>d</i> ₅ , 300 MHz) β-Sitosterol-3β-D-glucopyranoside..	5
Figure S3b. ¹³ C NMR spectrum of 3 (Pyridine- <i>d</i> ₅ , 100 MHz) β-Sitosterol-3β-D-glucopyranoside	5
Figure S4a. ¹ H NMR spectrum of 4 (Pyridine- <i>d</i> ₅ , 300 MHz) β-Stigmasterol.....	6
Figure S4b. ¹³ C NMR spectrum of 4 (Pyridine- <i>d</i> ₅ , 100 MHz) β-Stigmasterol.....	6
Figure S5a. ¹ H NMR spectrum of 5 (Pyridine- <i>d</i> ₅ , 300 MHz) β-Stigmasterol-3β-D-glucopyranoside.....	7
Figure S5b. ¹³ C NMR spectrum of 5 (Pyridine- <i>d</i> ₅ , 100 MHz) β-Stigmasterol-3β-D-glucopyranoside.....	7
Figure S6. ¹ H NMR spectrum of 6 (Chloroform- <i>d</i> , 300 MHz) Phytocholesterol.....	8
Figure S7a. ¹ H NMR spectrum of 7 (Pyridine- <i>d</i> ₅ , 400 MHz) Betulinic acid.....	9
Figure S7b. ¹³ C NMR spectrum of 7 (Pyridine- <i>d</i> ₅ , 100 MHz) Betulinic acid.....	9
Figure S8a. ¹ H NMR spectrum of 8 (Chloroform- <i>d</i> , 400 MHz) (+)-Epipinoresinol.....	10
Figure S8b. ¹³ C NMR spectrum of 8 (Chloroform- <i>d</i> , 100 MHz) (+)-Epipinoresinol.....	10
Figure S9a. ¹ H NMR spectrum of 9 (Chloroform- <i>d</i> , 400 MHz) (+)-Pinoresinol.....	11
Figure S9b. ¹³ C NMR spectrum of 9 (Chloroform- <i>d</i> , 100 MHz) (+)-Pinoresinol.....	11
Figure S10a. ¹ H NMR spectrum of 10 (Methanol- <i>d</i> ₄ , 400 MHz) (+)-Cyclooolivil.....	12
Figure S10b. ¹³ C NMR spectrum of 10 (Methanol- <i>d</i> ₄ , 100 MHz) (+)-Cyclooolivil.....	12
Figure S11a. ¹ H NMR spectrum of 11 (Methanol- <i>d</i> ₄ , 400 MHz) (+)-Secoisolariciresinol.....	13
Figure S11b. ¹³ C NMR spectrum of 11 (Methanol- <i>d</i> ₄ , 100 MHz) (+)-Secoisolariciresinol.....	13
Figure S12a. ¹ H NMR spectrum of 12 (Methanol- <i>d</i> ₄ , 400 MHz) (+)-Isolariciresinol.....	14
Figure S12b. ¹³ C NMR spectrum of 12 (Methanol- <i>d</i> ₄ , 100 MHz) (+)-Isolariciresinol.....	14
Figure S13a. ¹ H NMR spectrum of 13 (Methanol- <i>d</i> ₄ , 400 MHz) (+)-Eriodicyol.....	15
Figure S13b. ¹³ C NMR spectrum of 13 (Methanol- <i>d</i> ₄ , 100 MHz) (+)-Eriodictyol.....	15
Figure S14a. ¹ H NMR spectrum of TSS-1 (Chloroform- <i>d</i> , 300 MHz).....	16
Figure S14b. ¹³ C NMR spectrum of TSS-1 (Chloroform- <i>d</i> , 100 MHz).....	16
Figure S15a. ¹ H NMR spectrum of TSC-1 (Pyridine- <i>d</i> ₅ , 300 MHz).....	17
Figure S15b. ¹³ C NMR spectrum of TSC-1 (Chloroform- <i>d</i> , 100 MHz).....	17
Figure S16a. ¹ H NMR spectrum of TSC-2 (Pyridine- <i>d</i> ₅ , 300 MHz).....	18
Figure S16b. ¹³ C NMR spectrum of TSC-2 (Pyridine- <i>d</i> ₅ , 100 MHz).....	18
Figure S17. ¹ H NMR spectrum of TSC-1-FAME (Chloroform- <i>d</i> , 300 MHz)	19
Figure S18. ¹ H NMR spectrum of TSC-2-FAME (Chloroform- <i>d</i> , 300 MHz)	19
Figure S19. ¹ H NMR spectrum of TSC-1-FAME (Chloroform- <i>d</i> + D ₂ O, 300 MHz).....	20
Figure S 20. FAB MASS data of TSS-1	20

Figure S21. FAB MASS data of TSC-1	21
Figure S22. FAB MASS data of TSC-2	21
Figure S23. FAB MASS data of TSC-1-FAME	22
Figure S24. FAB MASS data of TSC-2-FAME	22
Figure S25. FAB MASS data of TSC-1-LCB-1	23
Figure S26. FAB MASS data of TSC-1-LCB-2	23
Figure S25. FAB MASS data of TSC-2-LCB-1	24
Figure S26. FAB MASS data of TSC-2-LCB-2	25

Figure S 1a. ^1H NMR spectrum of **1** (Chloroform-*d*, 300 MHz) β -Sitosteryl-3 β -D-glucopyranoside-6-*O*-palmitate

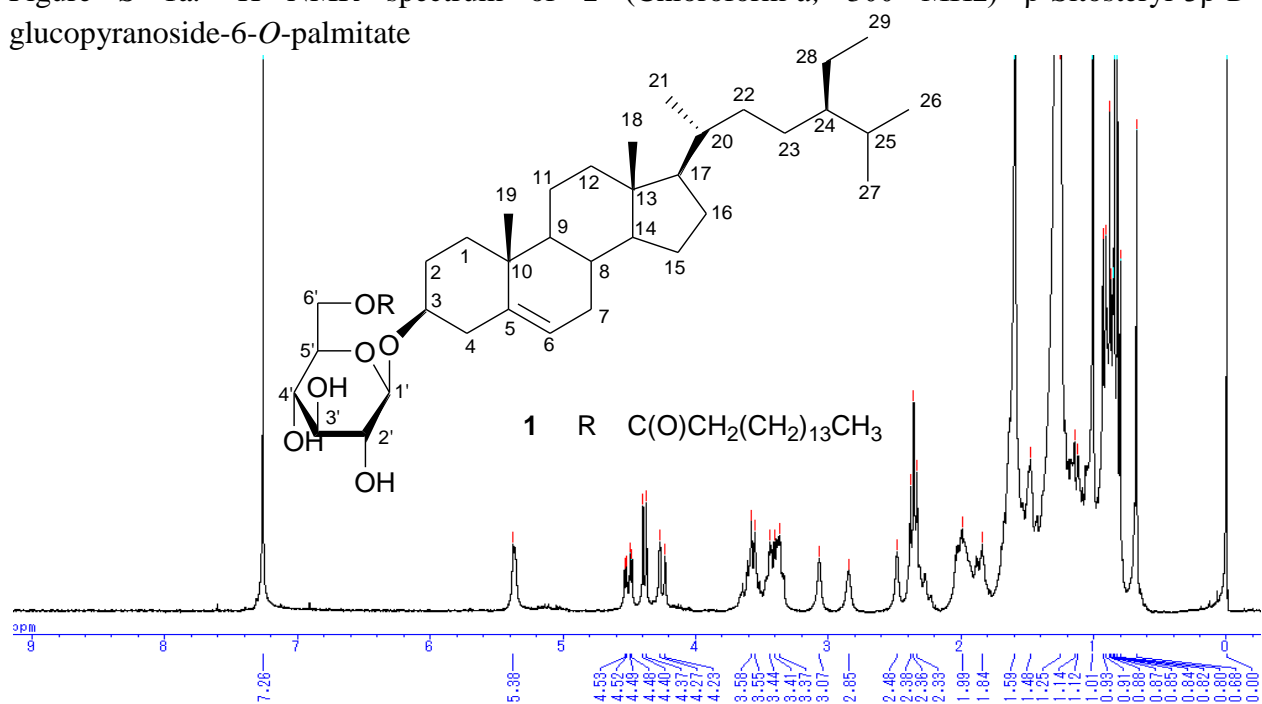


Figure S 1a. ^{13}C NMR spectrum of **1** (Chloroform-*d*, 100 MHz) β -Sitosteryl-3 β -D-glucopyranoside-6-*O*-palmitate

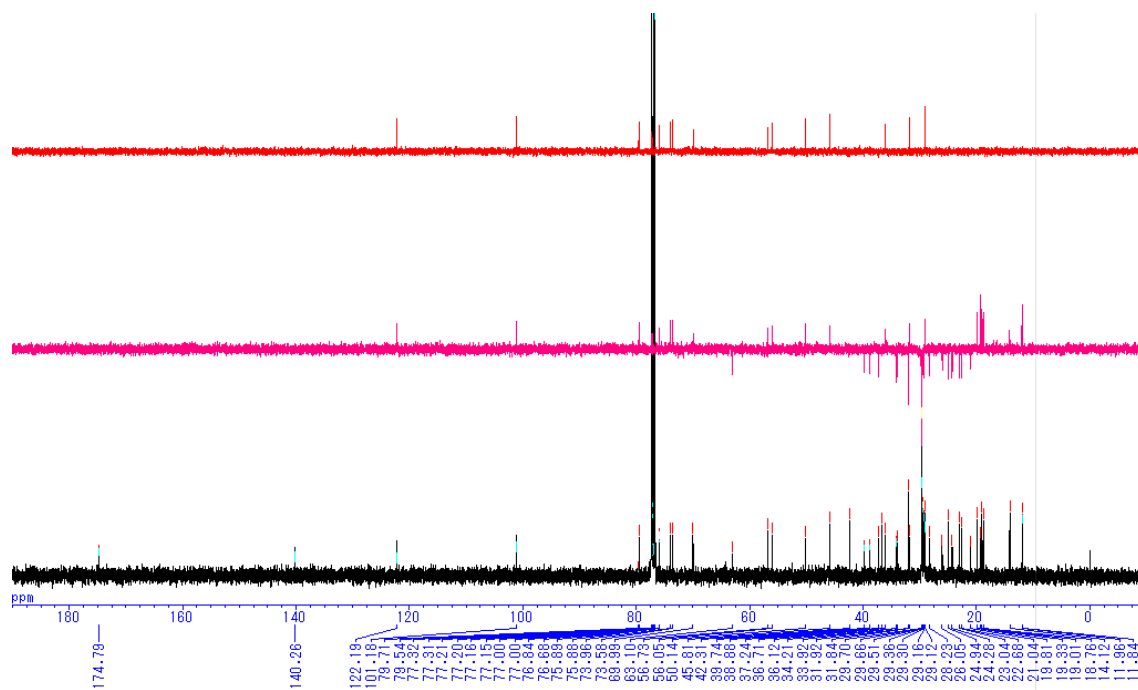


Figure S 2a. ^1H NMR spectrum of **2** (Pyridine- d_5 , 300 MHz) β -Sitosterol

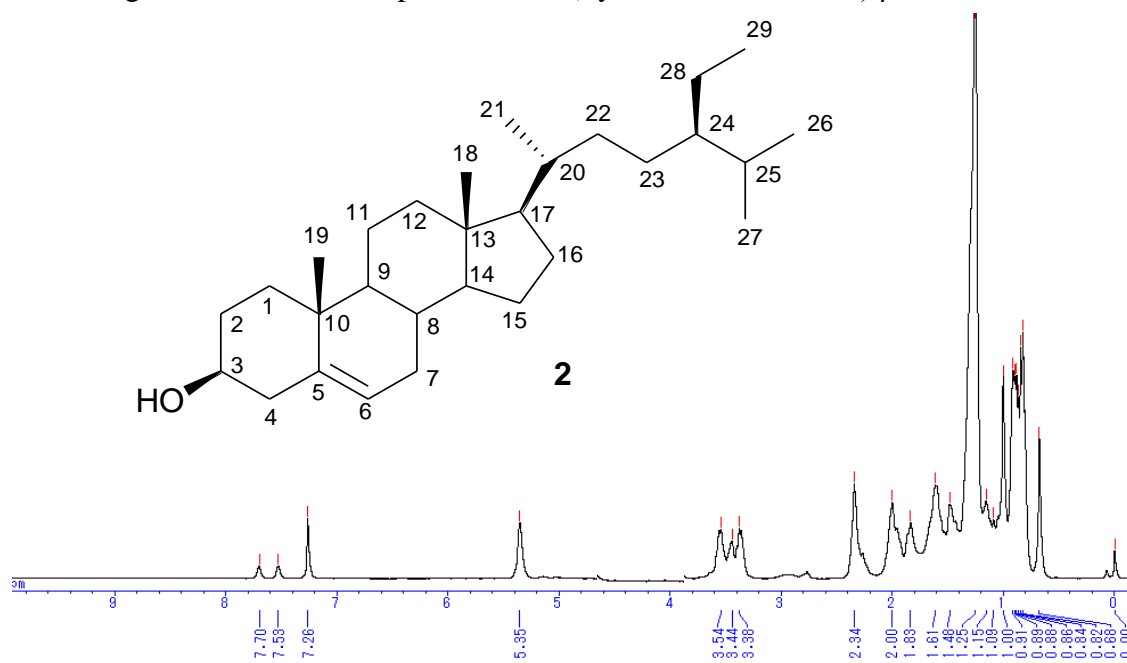


Figure S 2b. ^{13}C NMR spectrum of **2** (Pyridine- d_5 , 100 MHz) β -Sitosterol

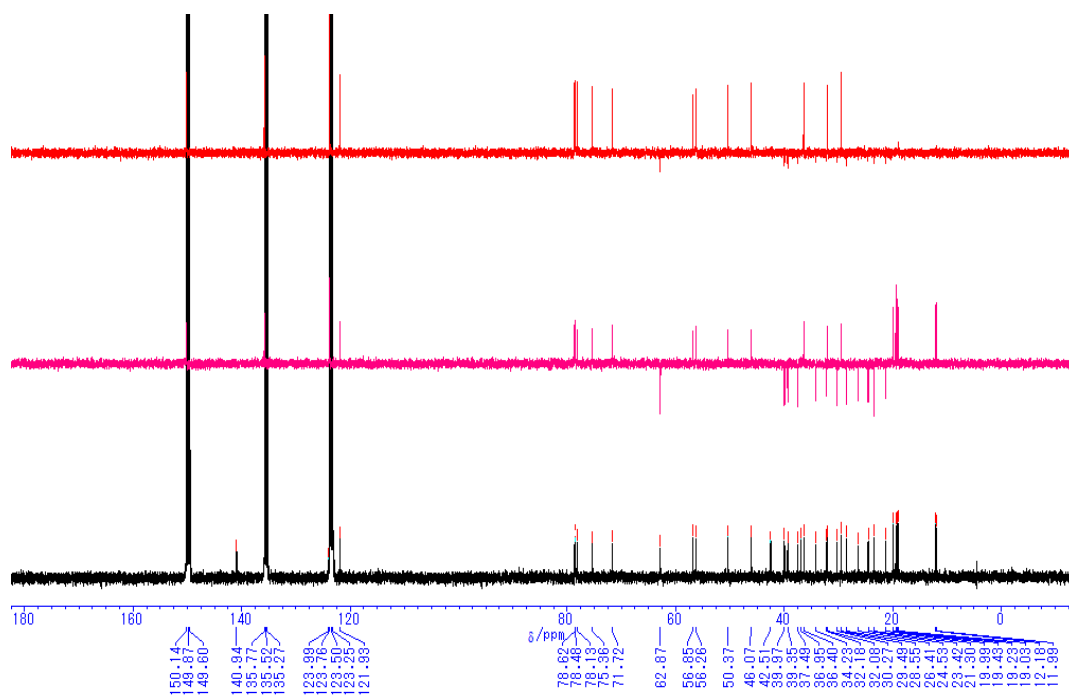


Figure S 3a. ^1H NMR spectrum of **3** (Pyridine- d_5 , 300 MHz) β -Sitosterol-3 β -D-glucopyranoside

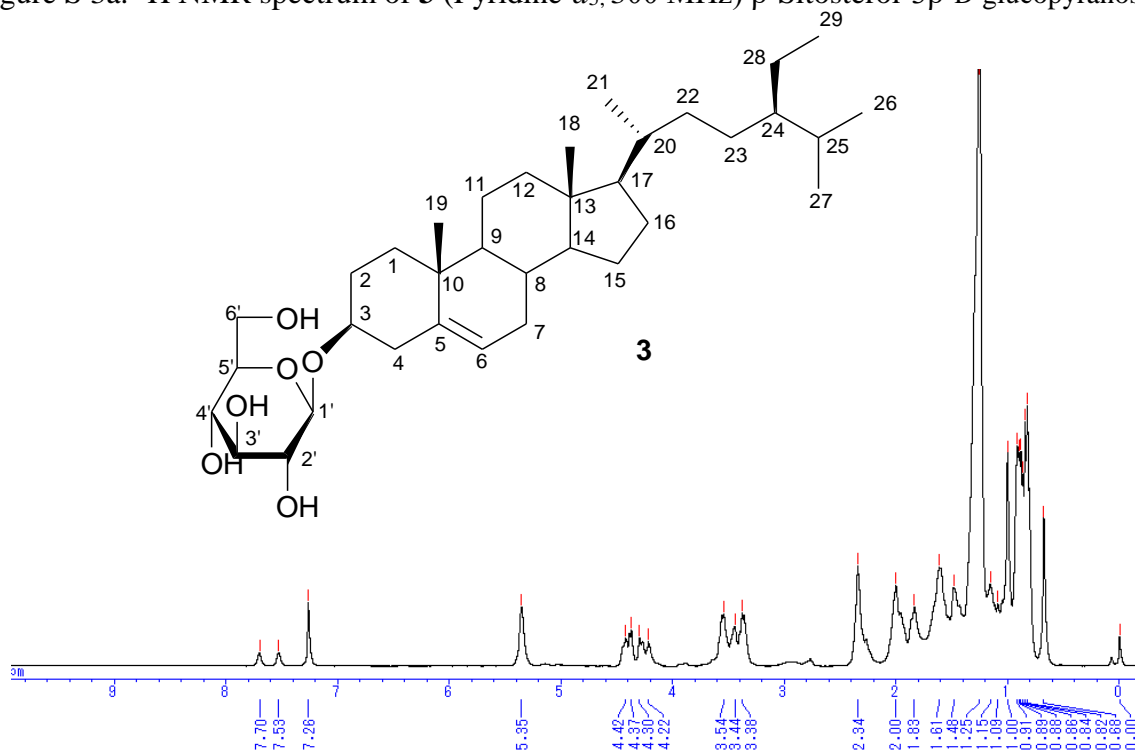
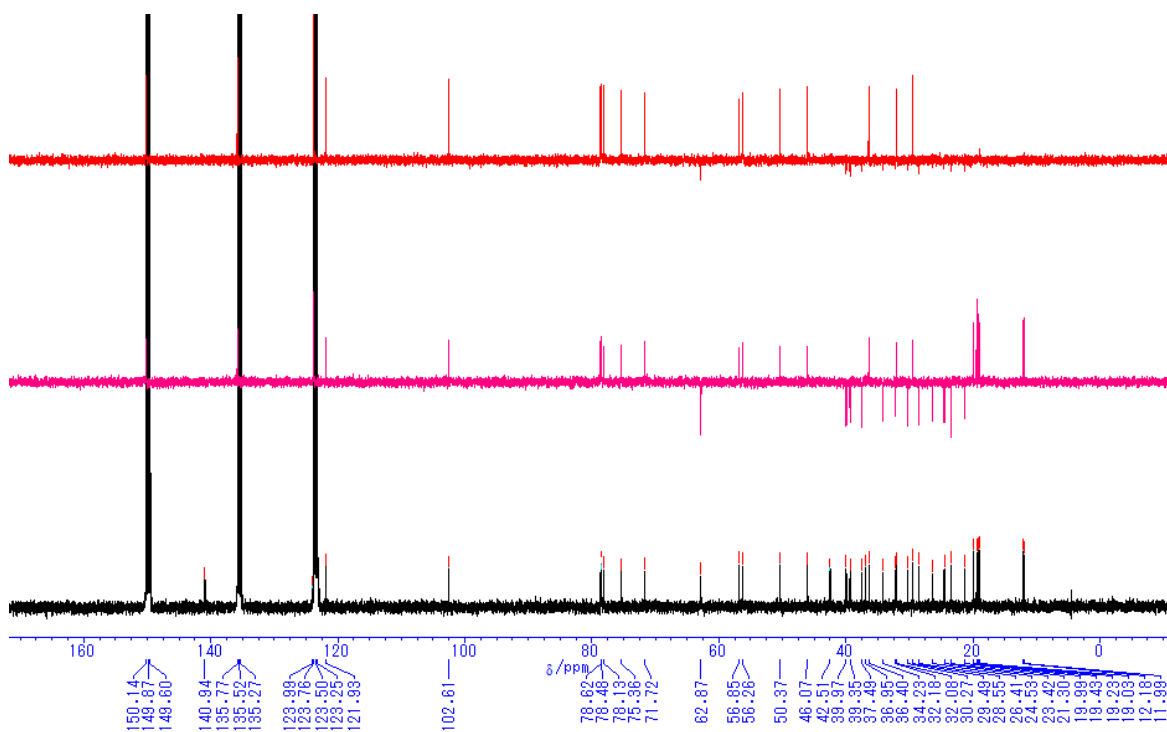


Figure S 3b. ^{13}C NMR spectrum of **3** (Pyridine- d_5 , 100 MHz) β -Sitosterol-3 β -D-glucopyranoside



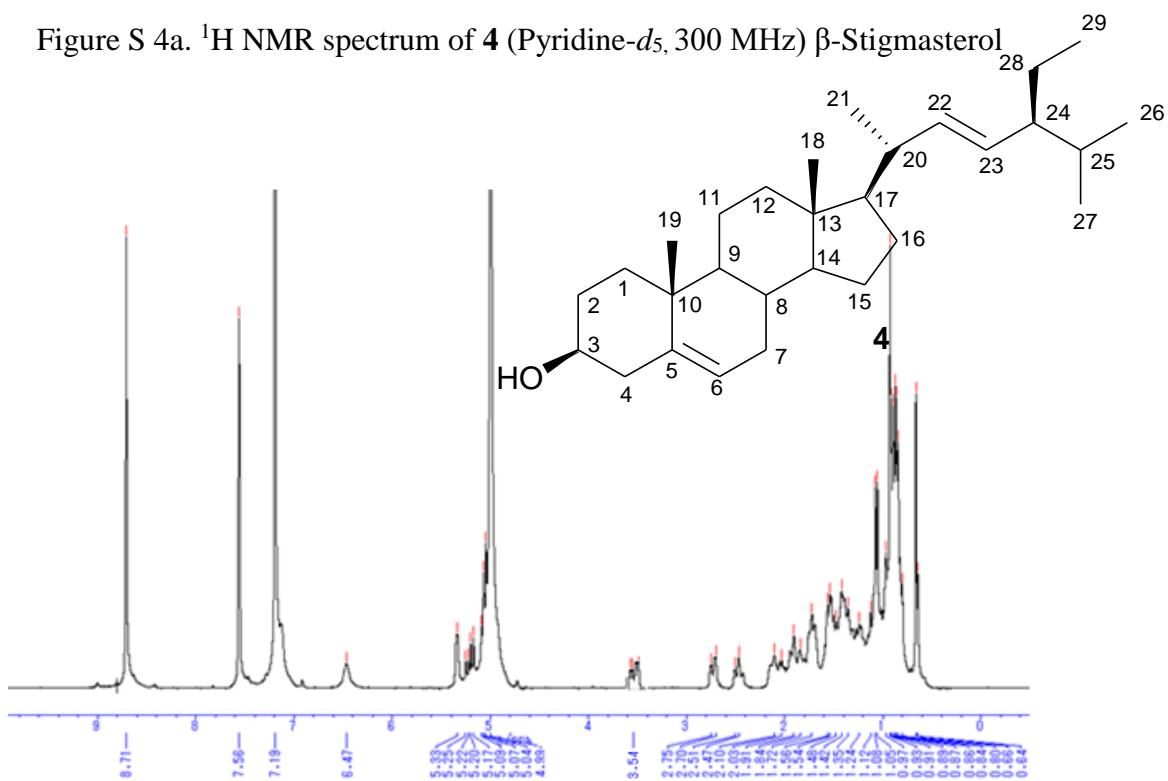


Figure S 4b. ^{13}C NMR spectrum of **4** (Pyridine- d_5 , 100 MHz) β -Stigmasterol

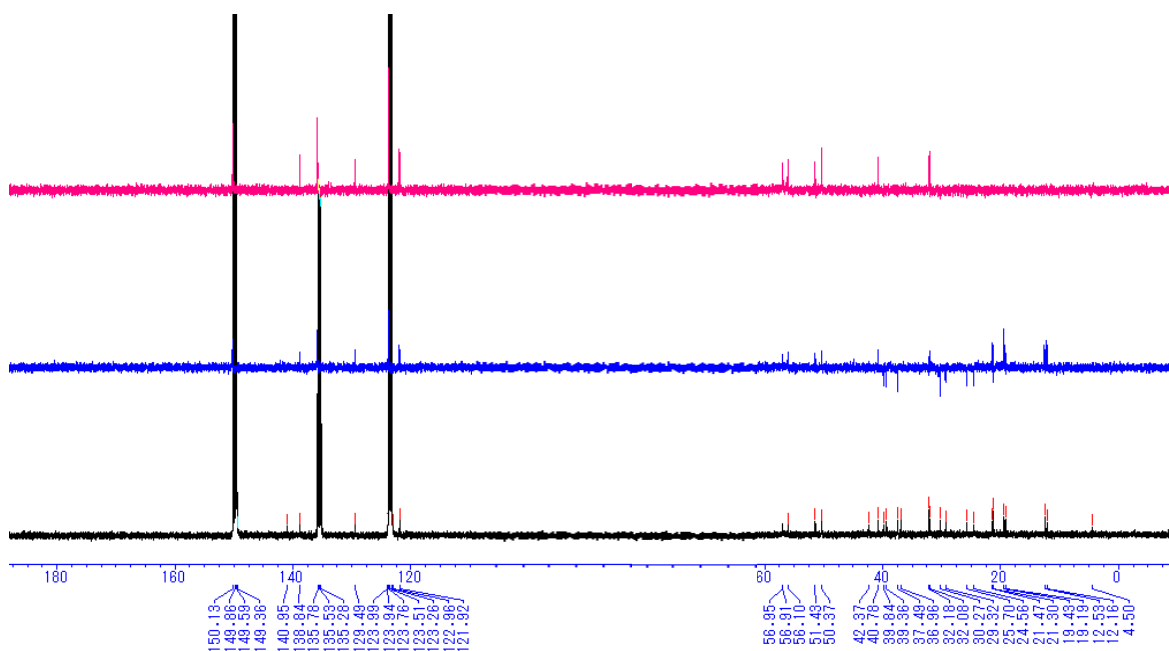


Figure S 5a. ^1H NMR spectrum of **5** (Pyridine- d_5 , 300 MHz) β -Stigmasterol-3 β -D-glucopyranoside

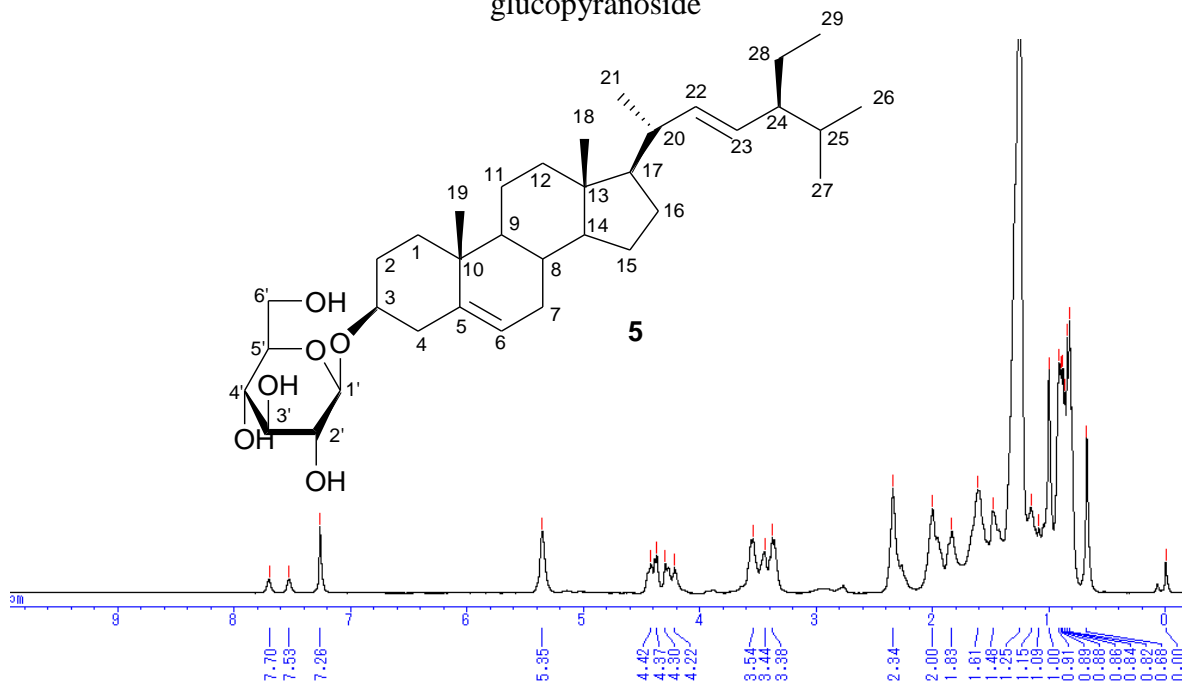


Figure S 5b. ^{13}C NMR spectrum of **5** (Pyridine- d_5 , 100 MHz) β -Stigmasterol-3 β -D-glucopyranoside

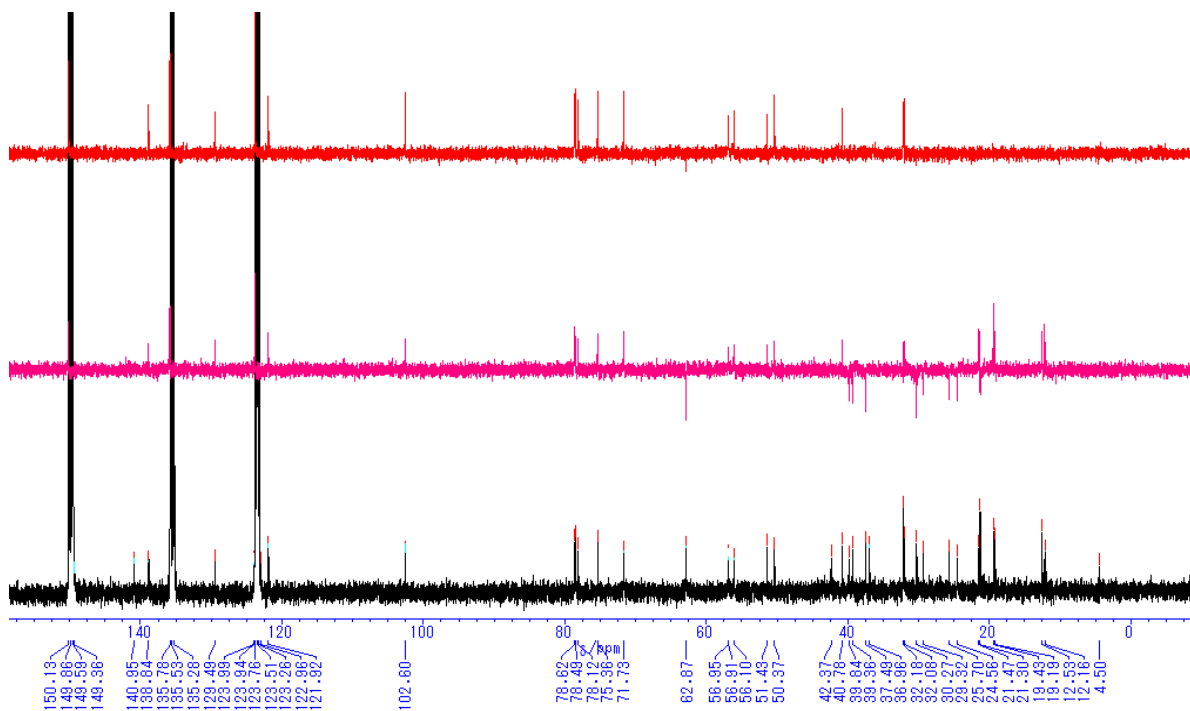


Figure S 6. ^1H NMR spectrum of **6** (Chloroform-*d*, 300 MHz) Phytocholesterol

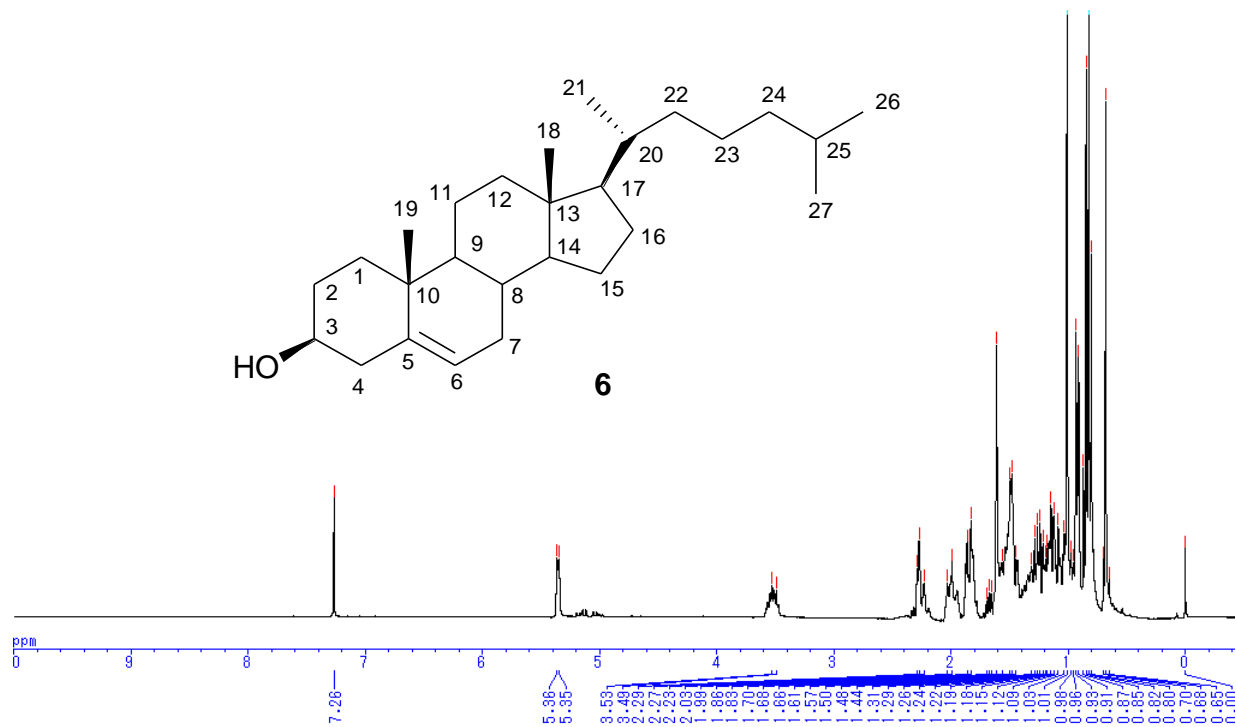


Figure S 7a. ^1H NMR spectrum of **7** (Pyridine- d_5 , 400 MHz) Betulinic acid

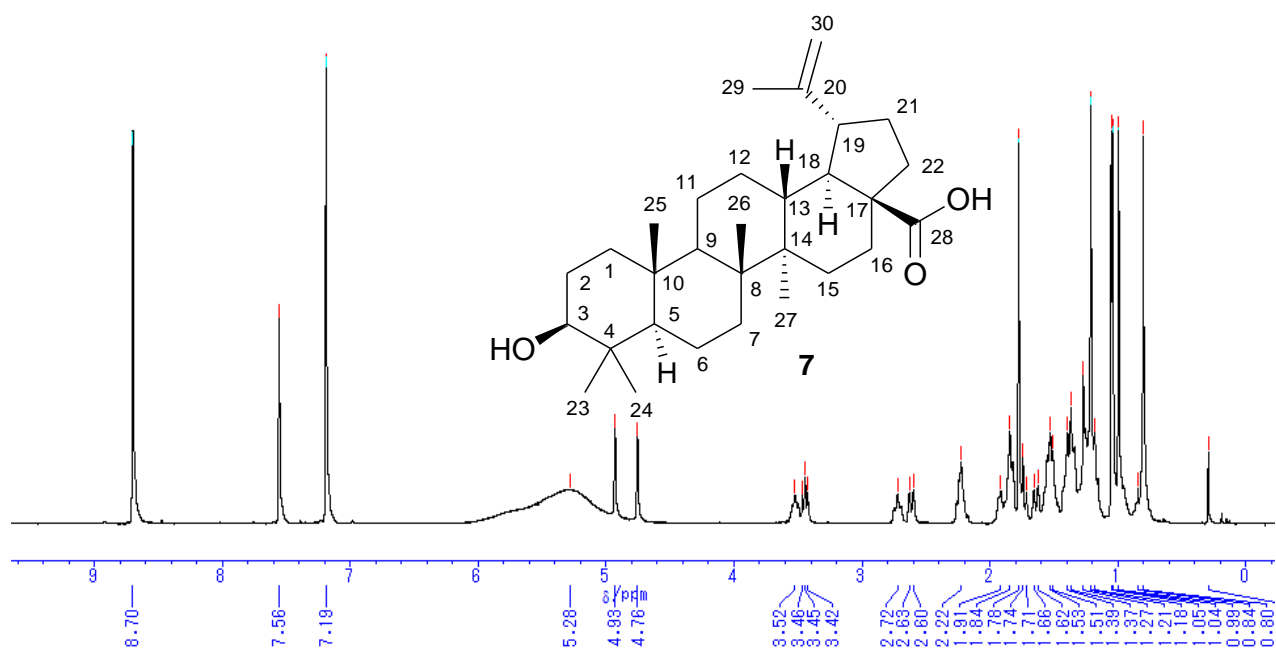


Figure S 7b. ^{13}C NMR spectrum of **7** (Pyridine- d_5 , 100 MHz) Betulinic acid

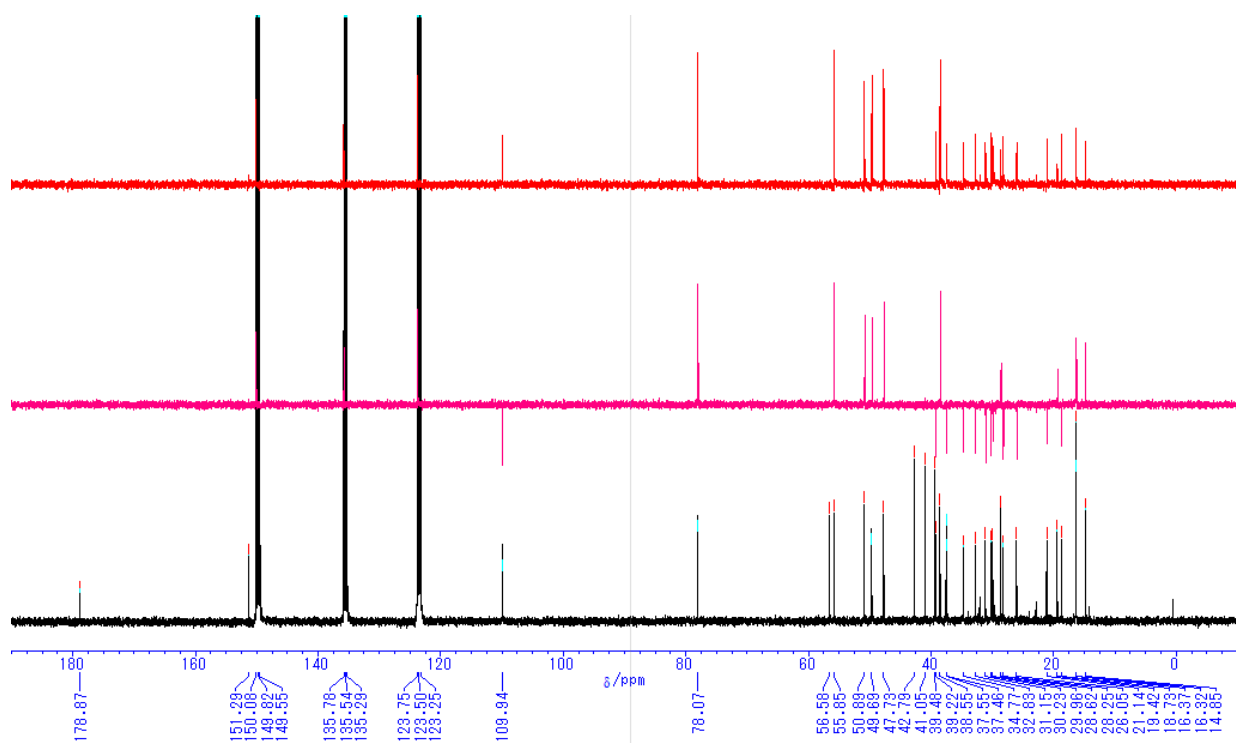


Figure S 8a. ^1H NMR spectrum of **8** (Chloroform-*d*, 400 MHz) (+)-Epipinoresinol

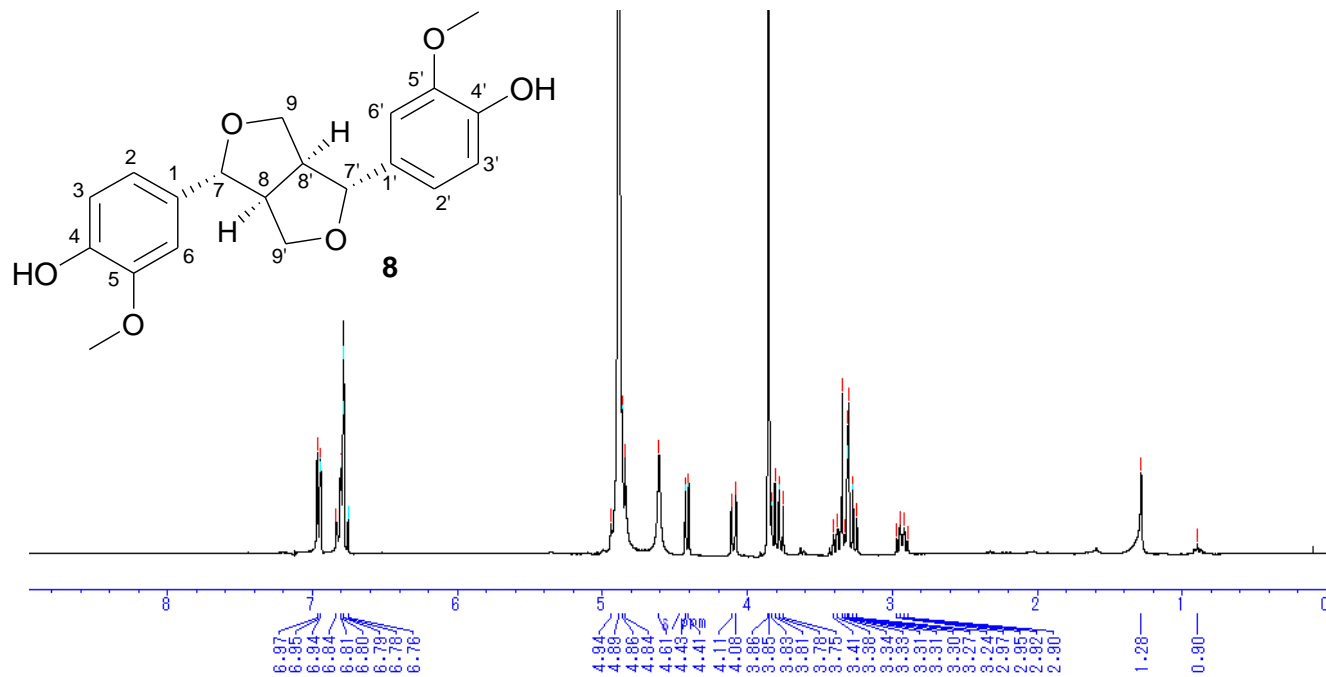


Figure S 8b. ^{13}C NMR spectrum of **8** (Chloroform-*d*, 100 MHz) (+)-Epipinoresinol

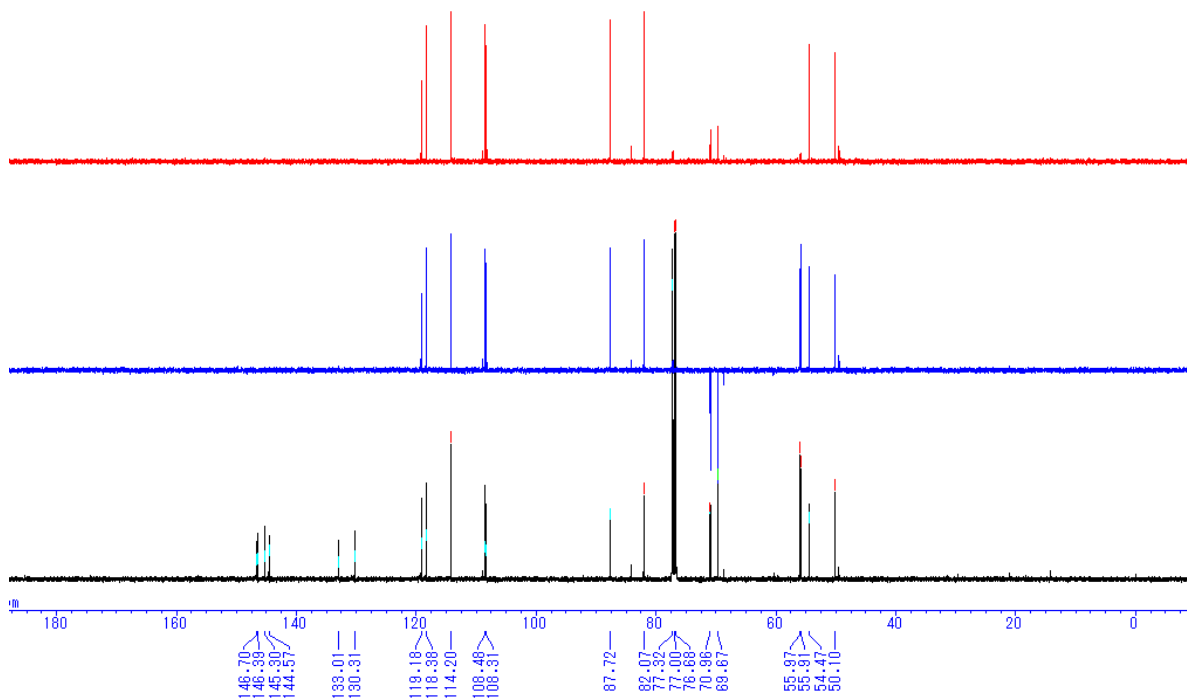


Figure S 9a. ^1H NMR spectrum of **9** (Chloroform- d , 400 MHz) (+)-Pinoresinol

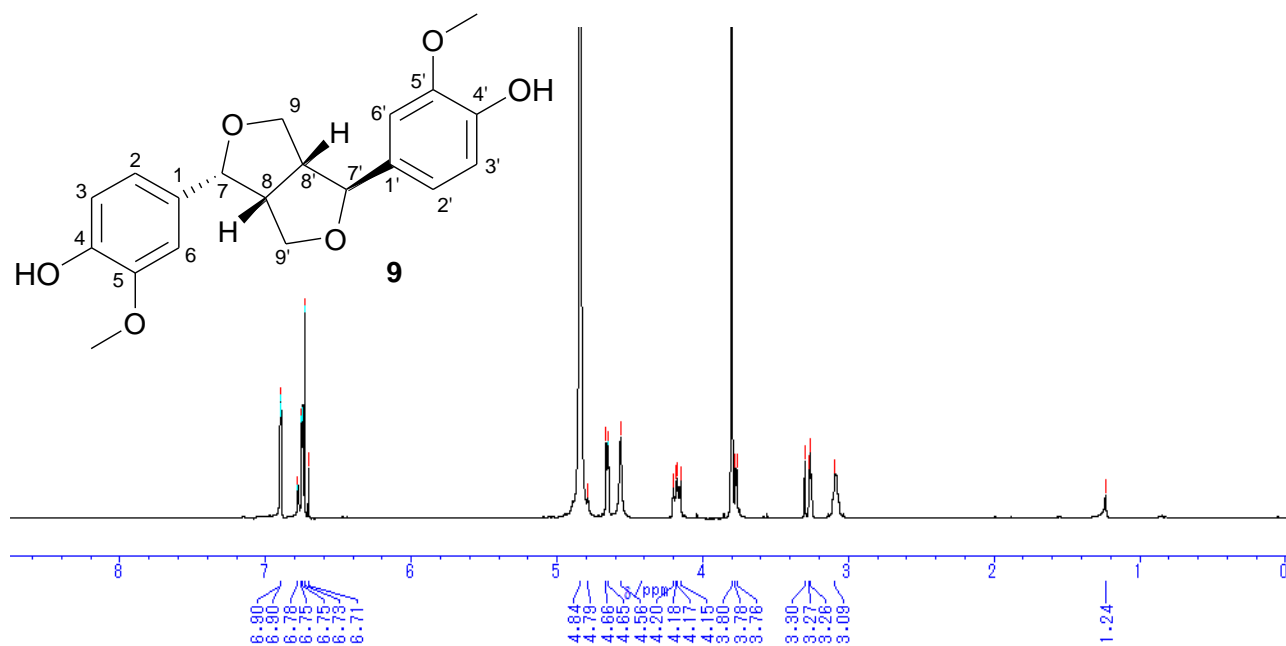


Figure S 9b. ^{13}C NMR spectrum of **9** (Chloroform- d , 100 MHz) (+)-Pinoresinol

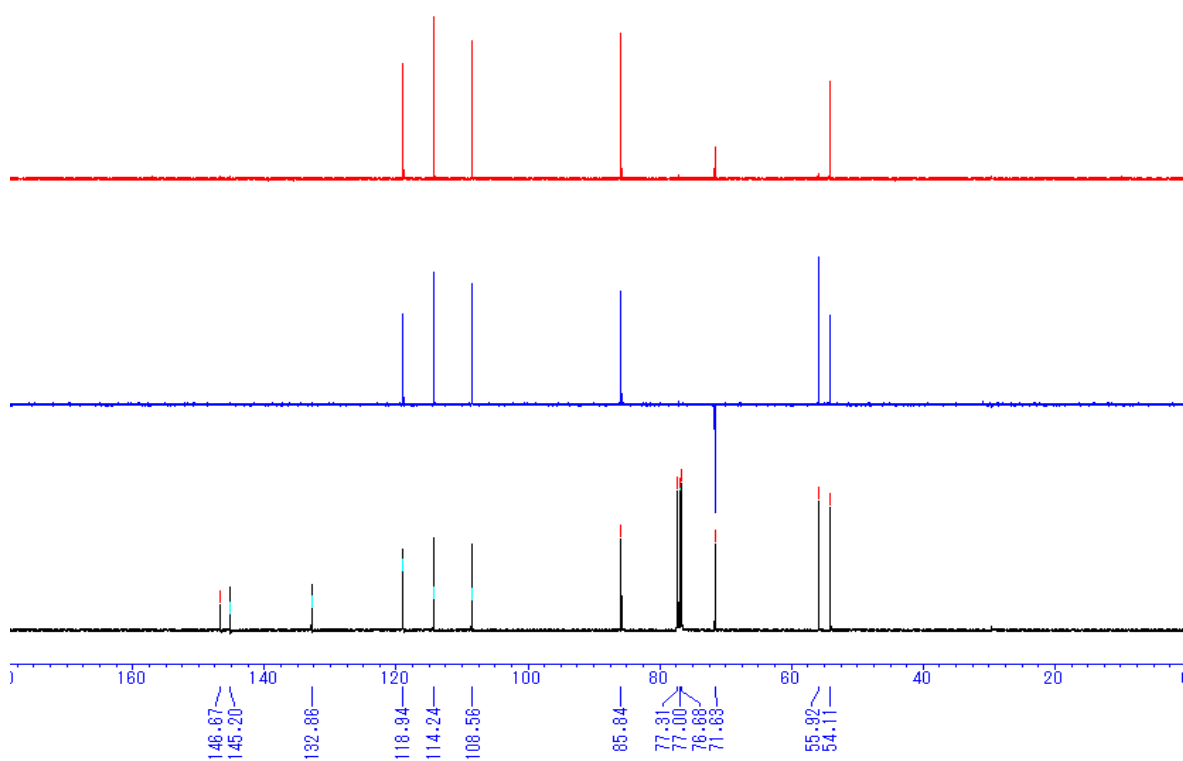


Figure S 10a. ^1H NMR spectrum of **10** (Methanol- d_4 , 400 MHz) (+)-Cyclooolivil

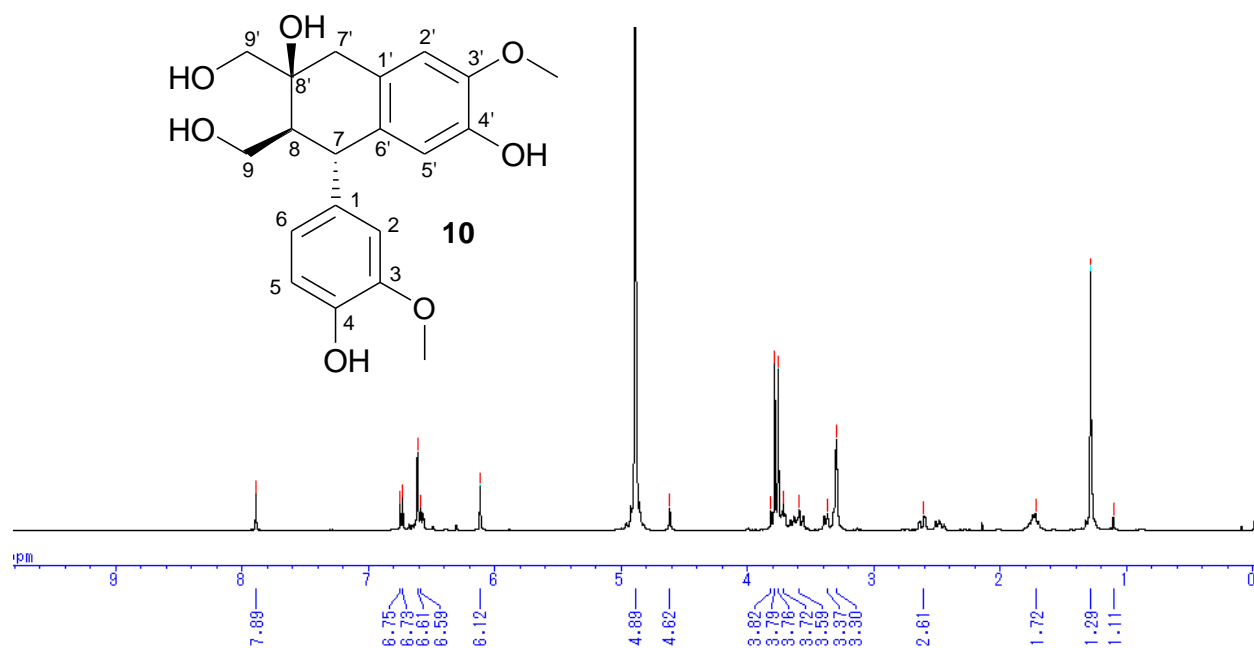


Figure S 10b. ^{13}C NMR spectrum of **10** (Methanol- d_4 , 100 MHz) (+)-Cyclooolivil

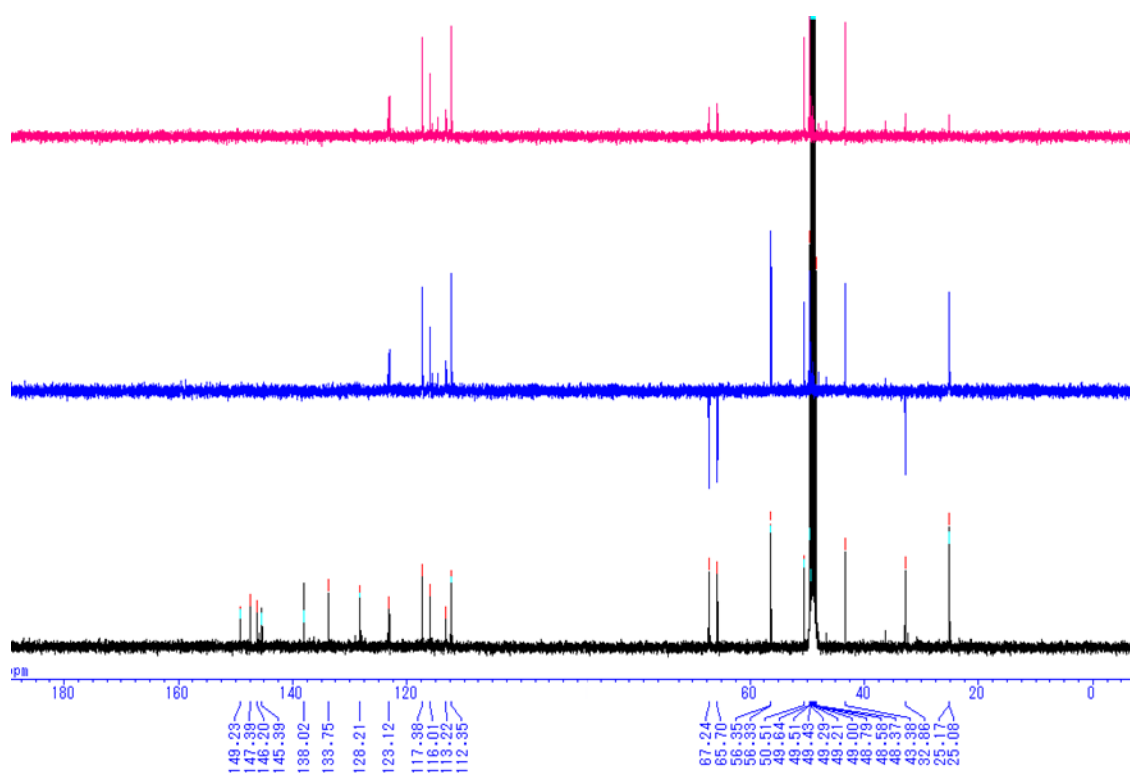


Figure S 11a. ^1H NMR spectrum of **11** (Methanol- d_4 , 400 MHz) (+)-Secoisolariciresinol

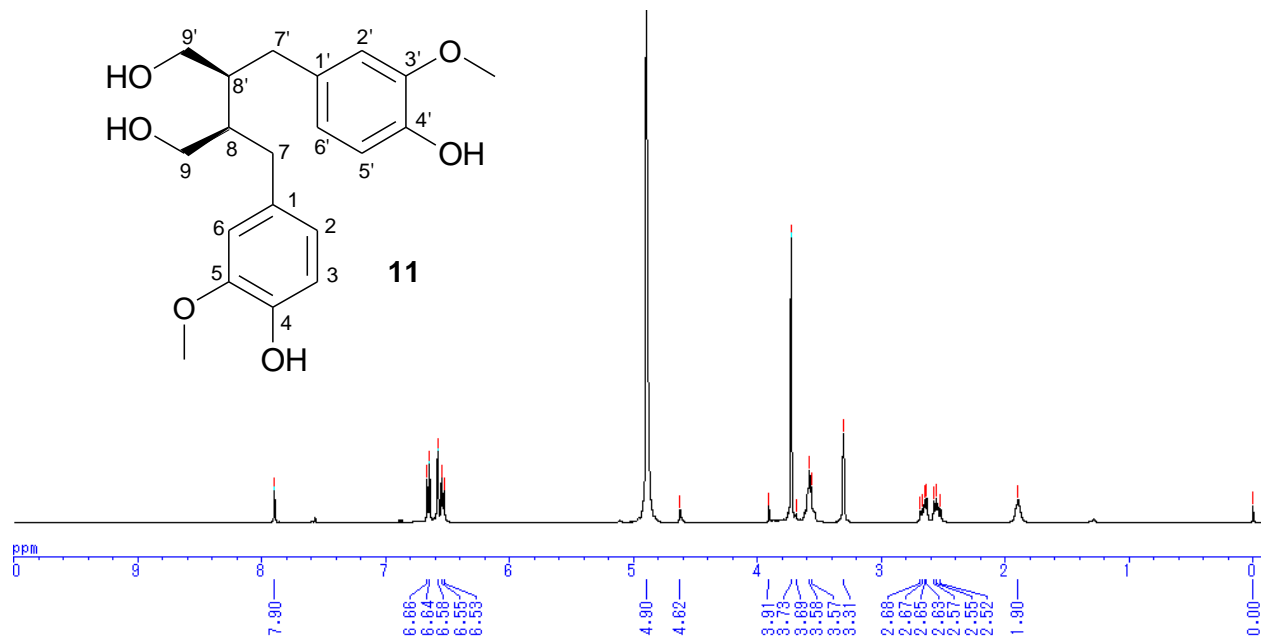


Figure S 11b. ^{13}C NMR spectrum of **11** (Methanol- d_4 , 100 MHz) (+)-Secoisolariciresinol

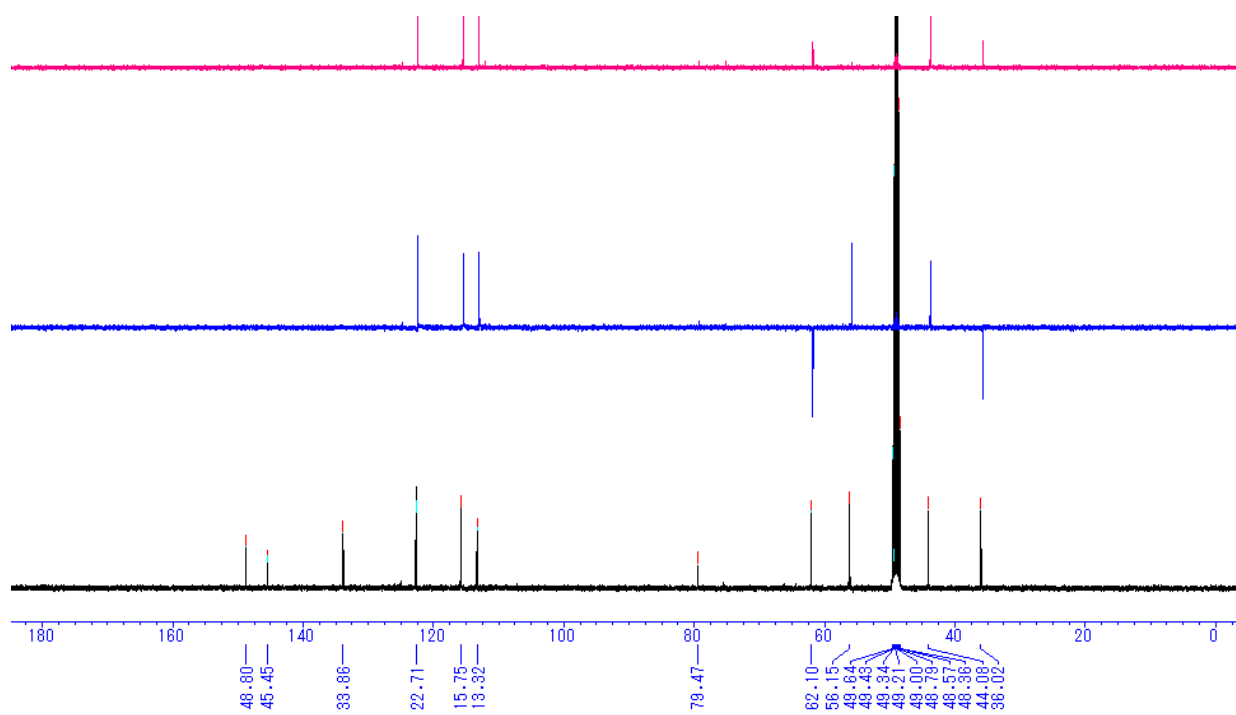


Figure S 12a. ^1H NMR spectrum of **12** (Methanol- d_4 , 400 MHz) (+)-Isolariciresinol

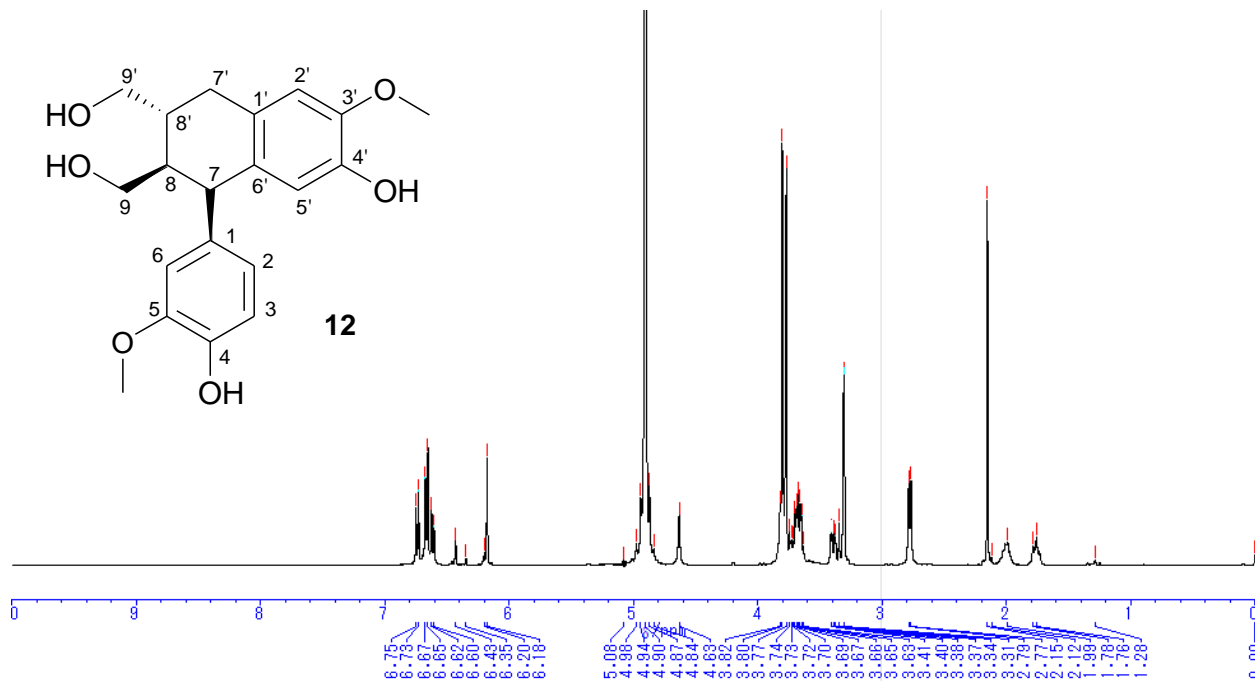


Figure S 12b. ^{13}C NMR spectrum of **12** (Methanol- d_4 , 100 MHz) (+)-Isolariciresinol

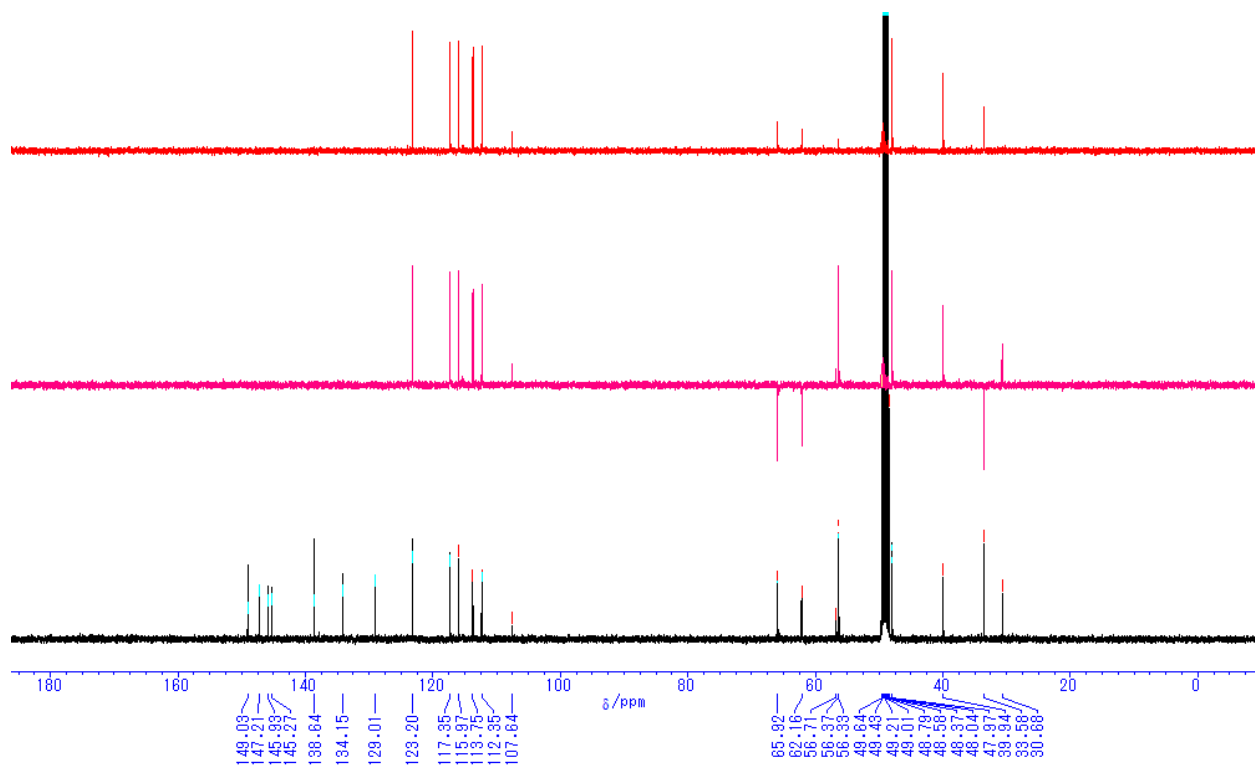


Figure S 13a. ^1H NMR spectrum of **13** (Methanol- d_4 , 400 MHz) (+)-Eriodictyol

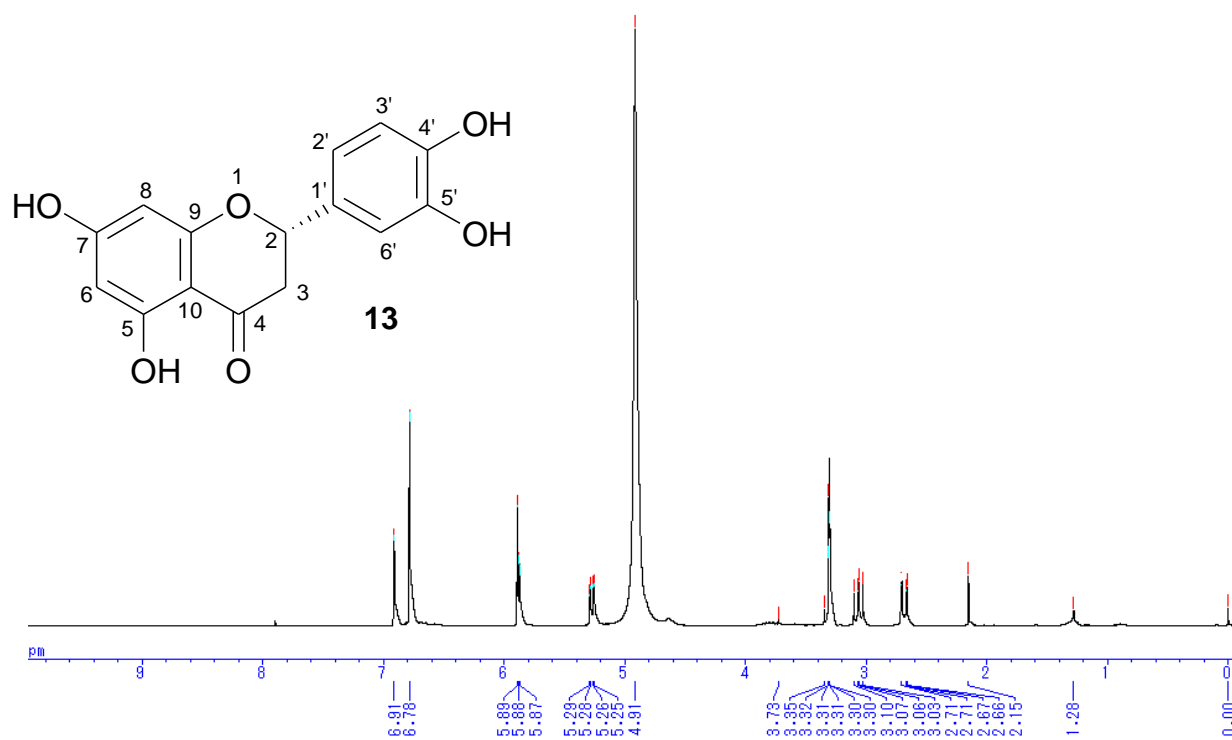


Figure S 13b. ^{13}C NMR spectrum of **13** (Methanol- d_4 , 100 MHz) (+)-Eriodictyol

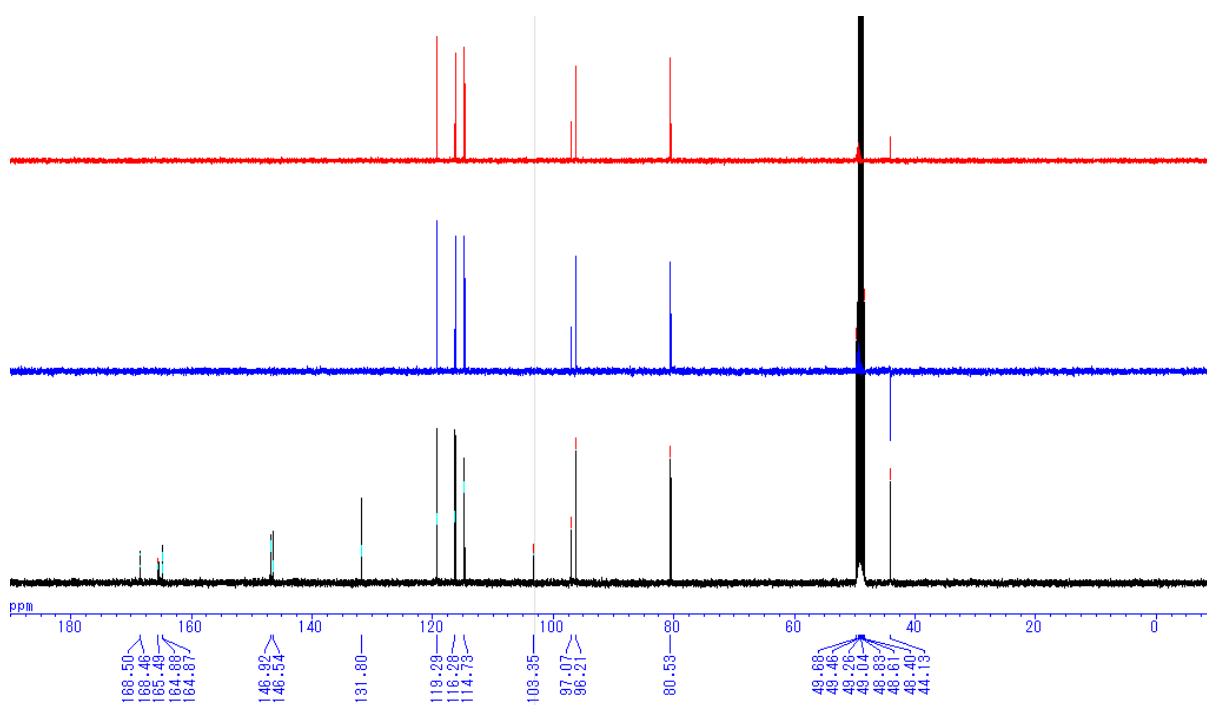


Figure S 14a. ^1H NMR spectrum of **TSS-1** (Chloroform-*d*, 300 MHz) TSS-1

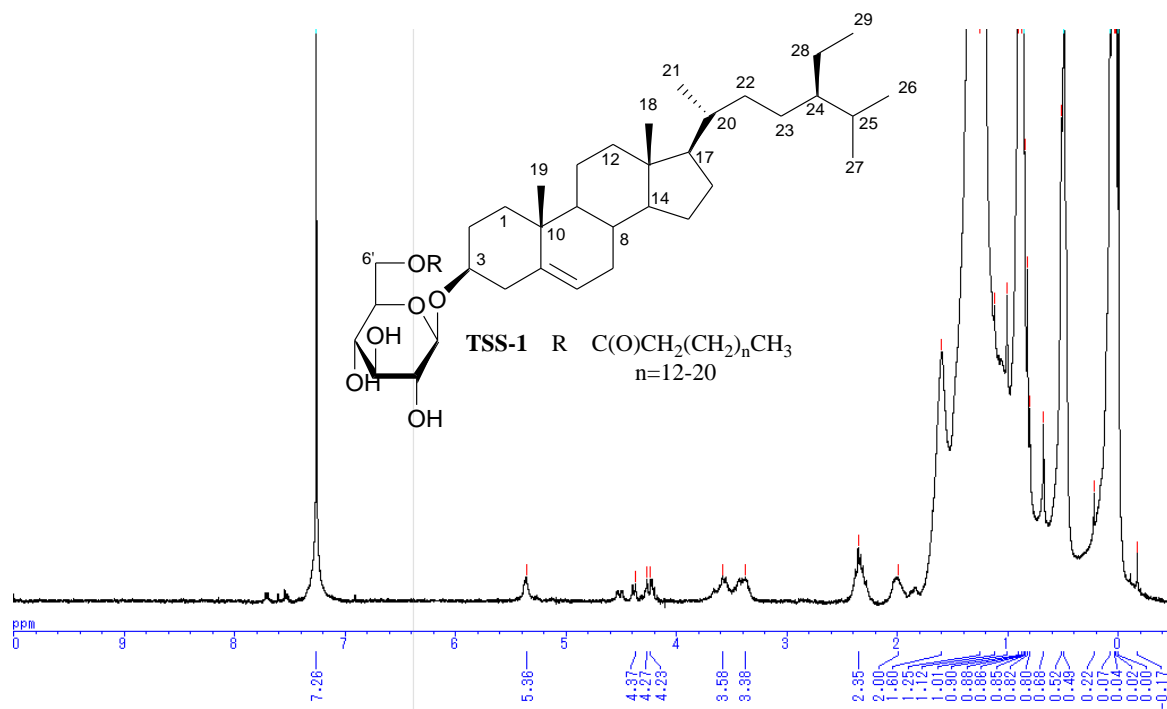


Figure S 14b. ^{13}C NMR spectrum of **TSS-1** (Chloroform-*d*, 100 MHz) TSS-1

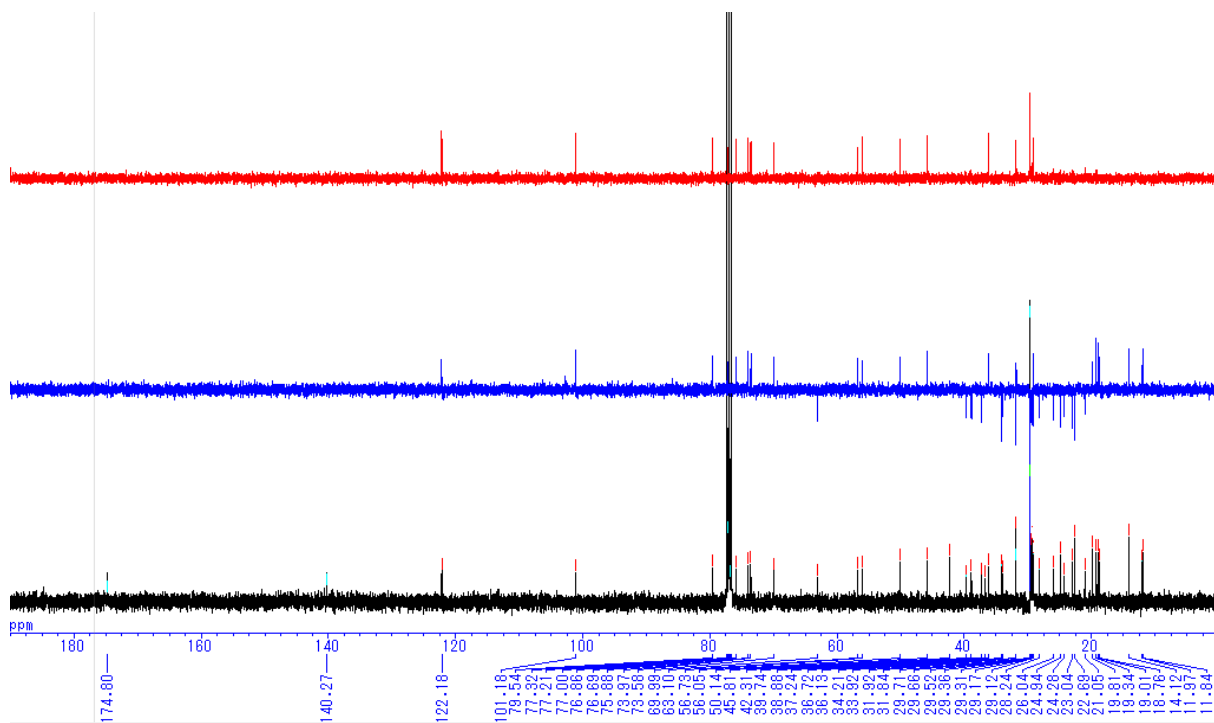


Figure S 15a. ^1H NMR spectrum of TSC-1 (Pyridine- d_5 , 300 MHz)

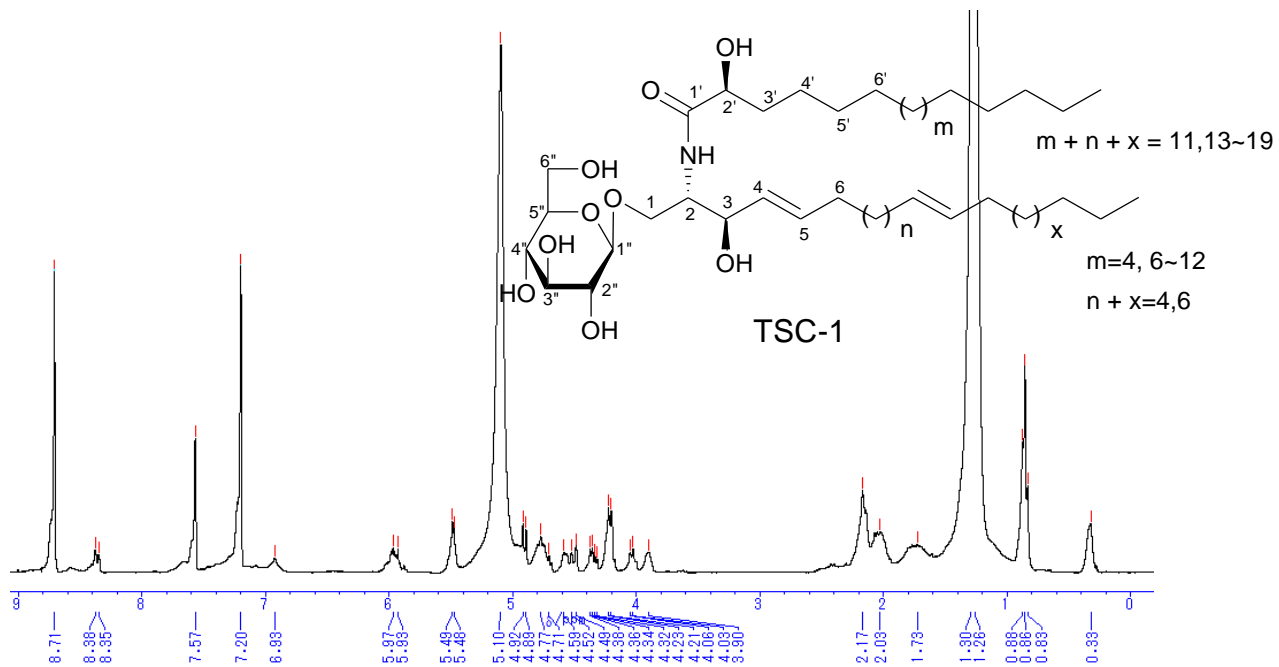


Figure S 15b. ^{13}C NMR spectrum of TSC-1 (Pyridine- d_5 , 100 MHz)

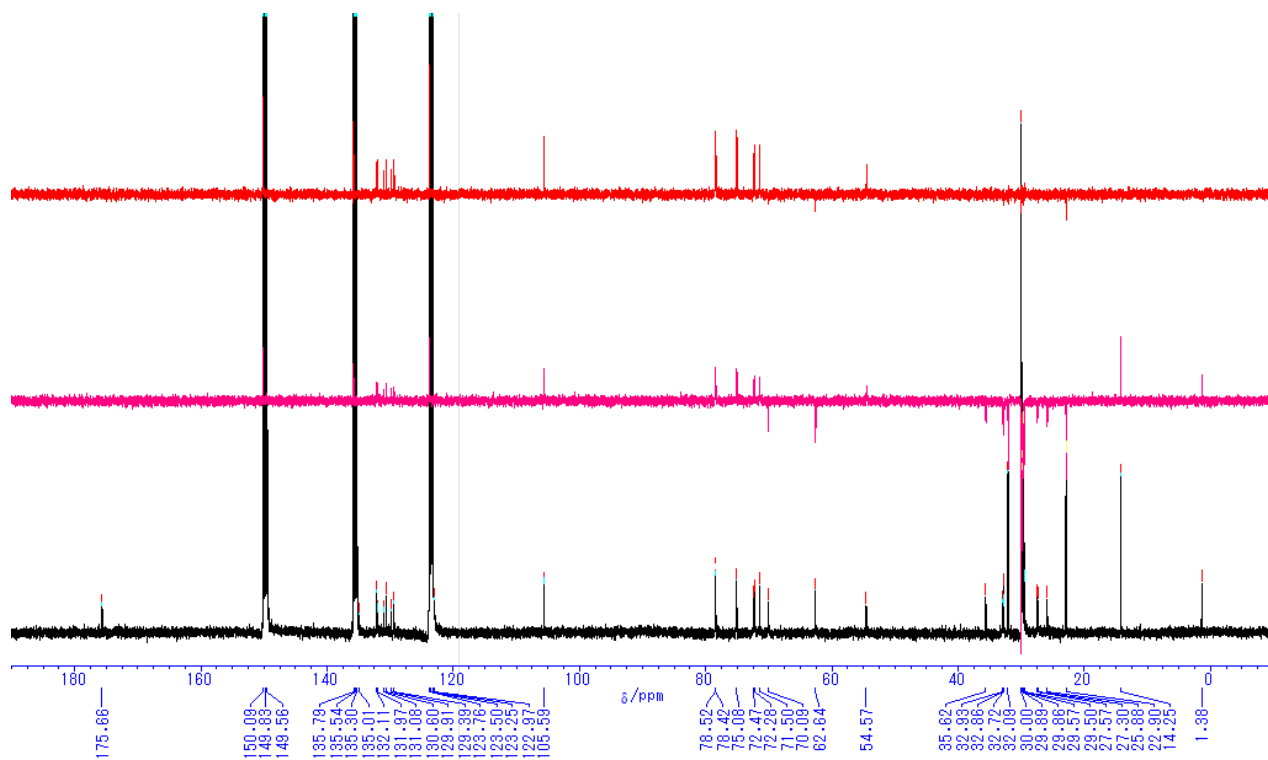


Figure S 16a. ^1H NMR spectrum of TSC-2 (Pyridine- d_5 , 300 MHz)

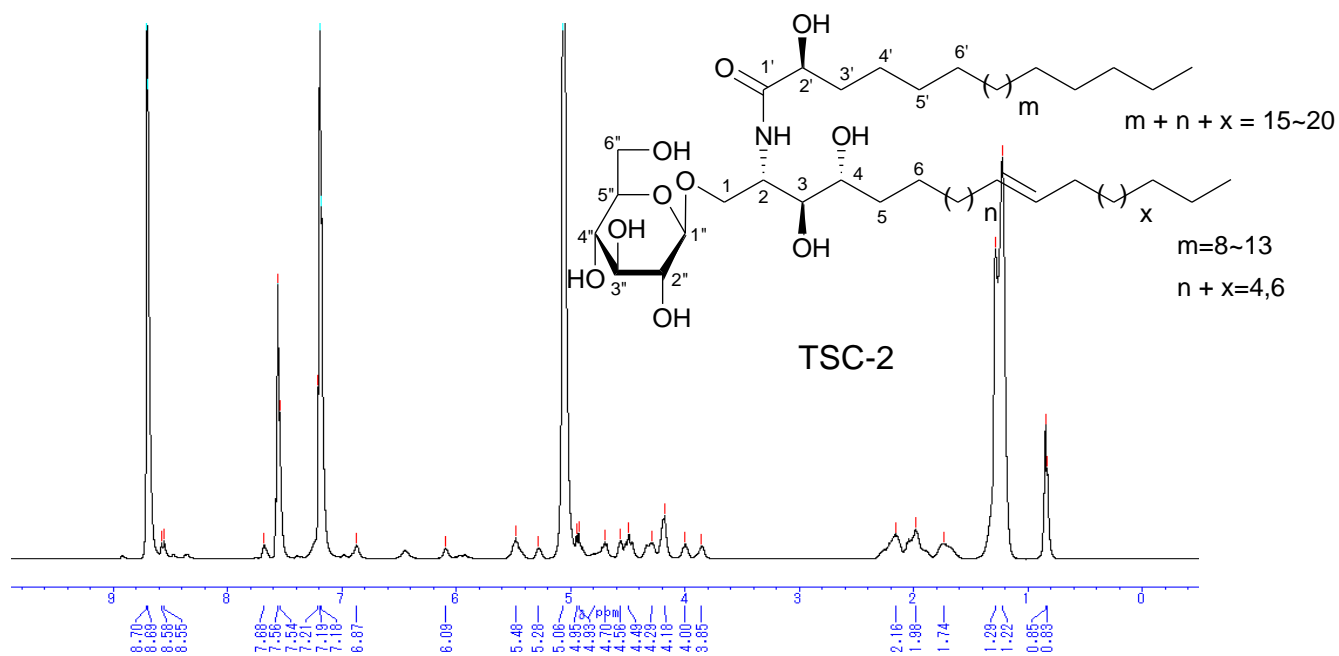


Figure S 16b. ^{13}C NMR spectrum of TSC-2 (Pyridine- d_5 , 100 MHz)

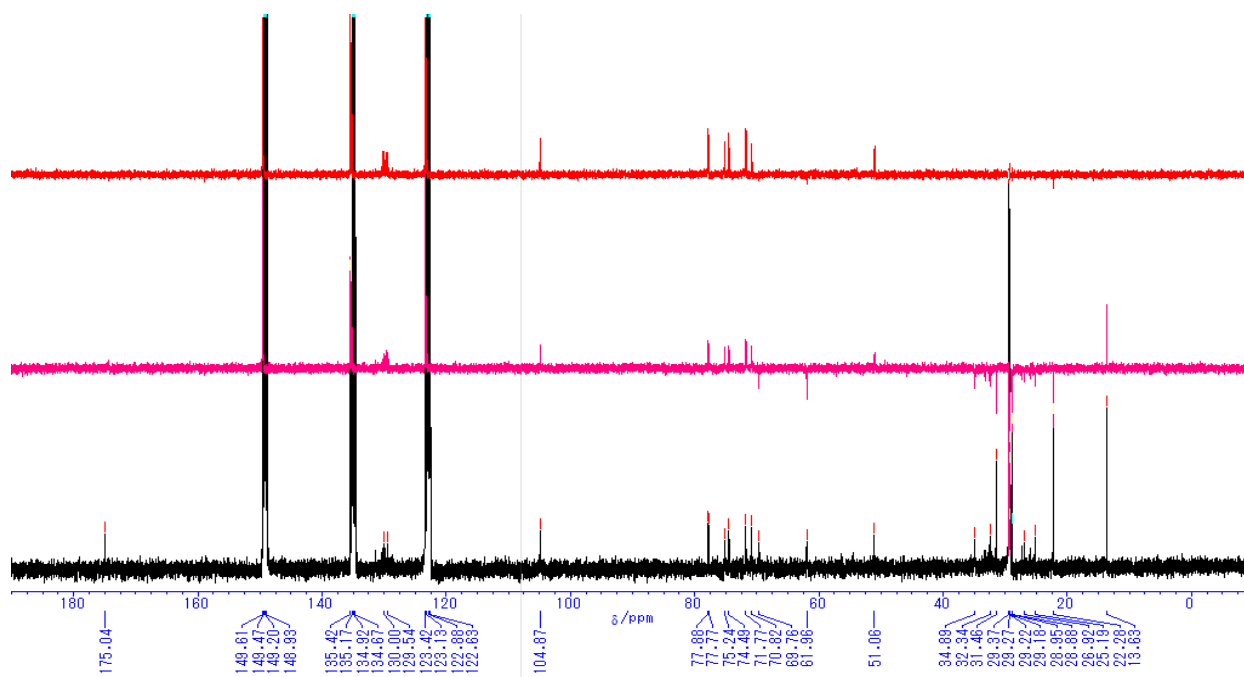


Figure S 17. ^1H NMR spectrum of **TSC-1-FAME** (Chloroform- d , 300 MHz)

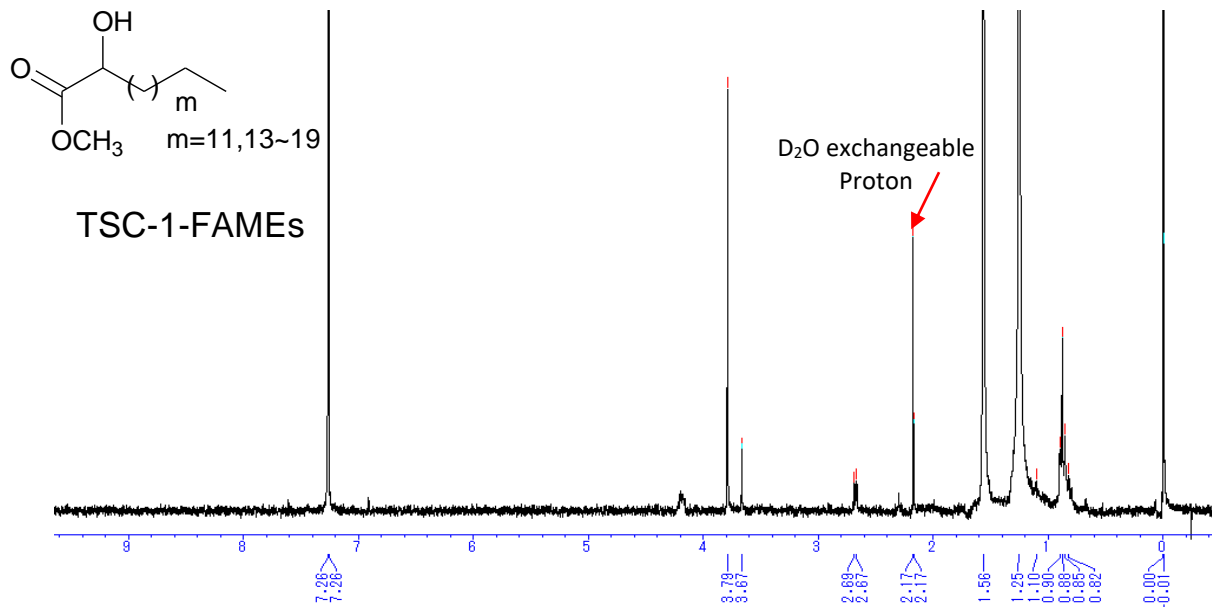


Figure S 18. ^1H NMR spectrum of **TSC-2-FAME** (Chloroform- d , 300 MHz)

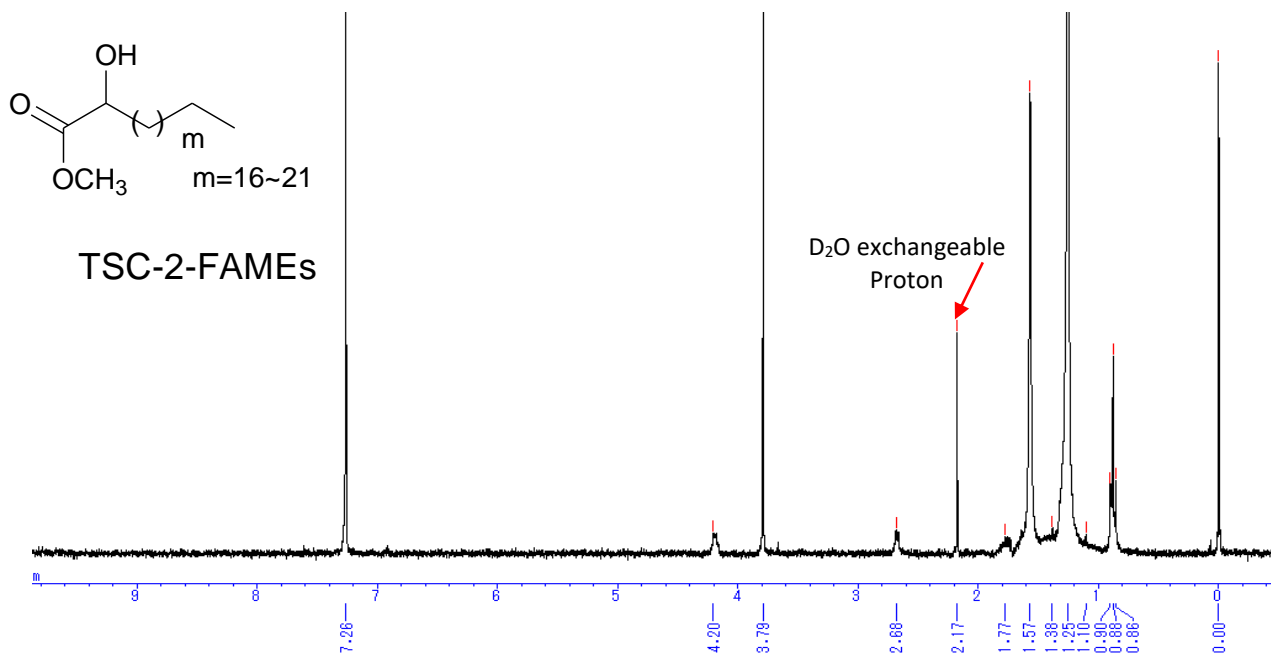


Figure S 19. ^1H NMR spectrum of **TSC-1-FAME** (Chloroform- d + D_2O , 300 MHz)

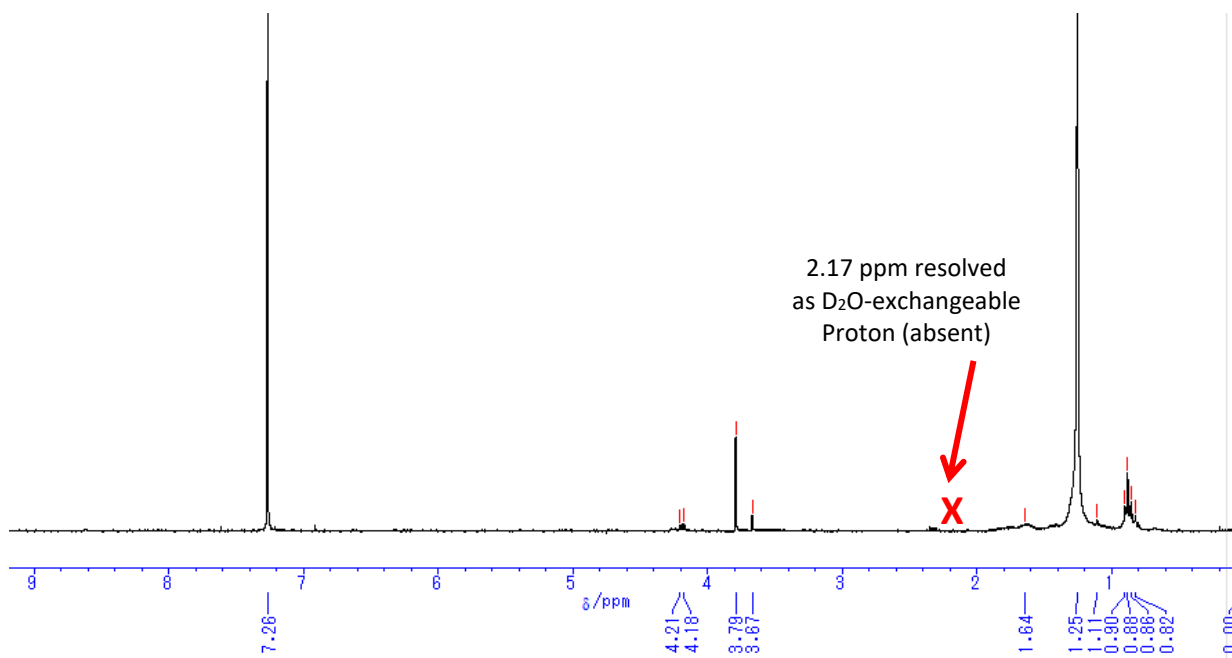


Figure S 20. FAB MASS data of **TSS-1**

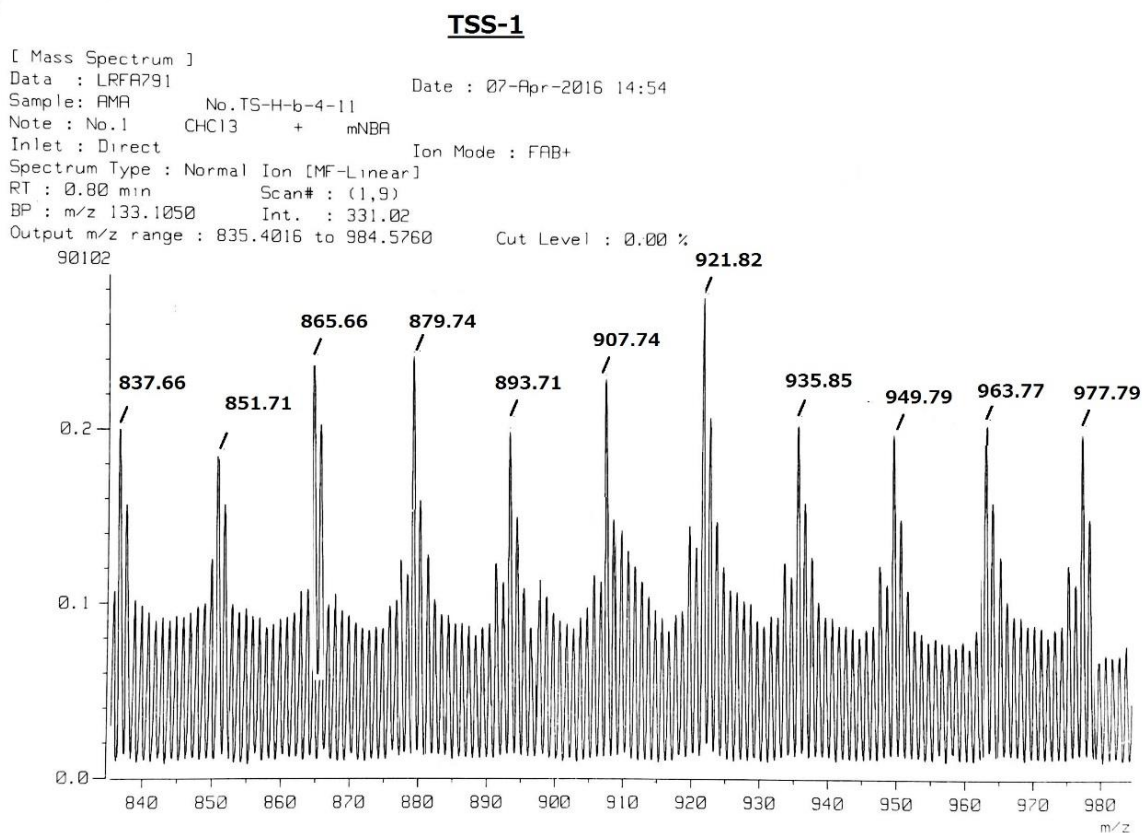


Figure S 21. FAB MASS data of TSC-1

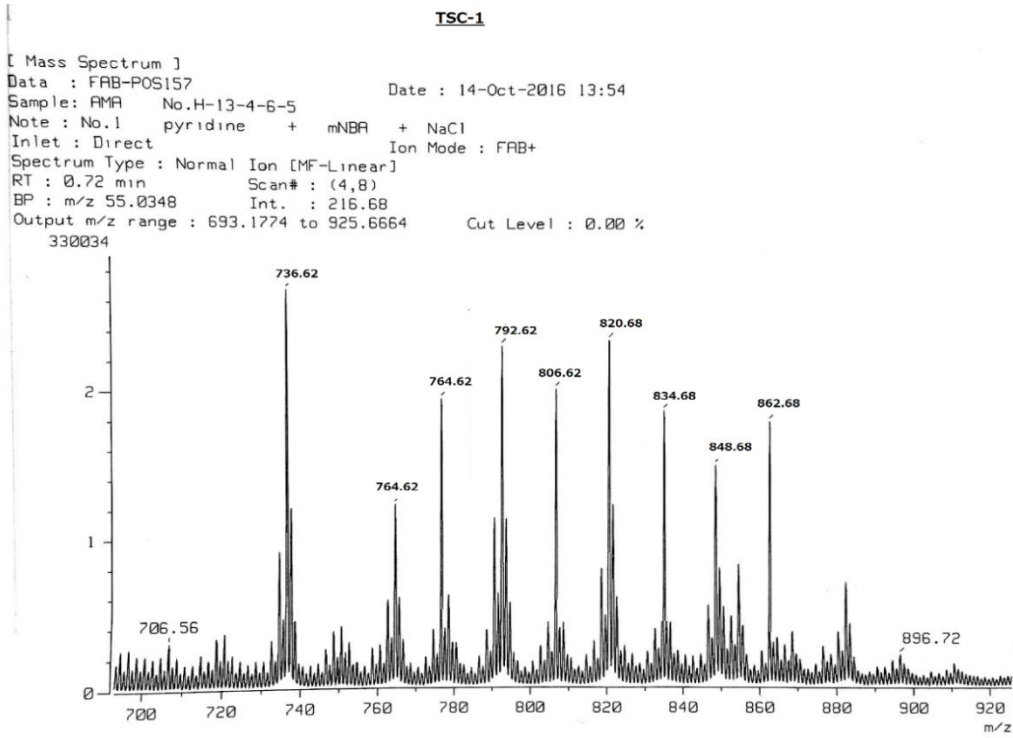


Figure S 22. FAB MASS data of TSC-2

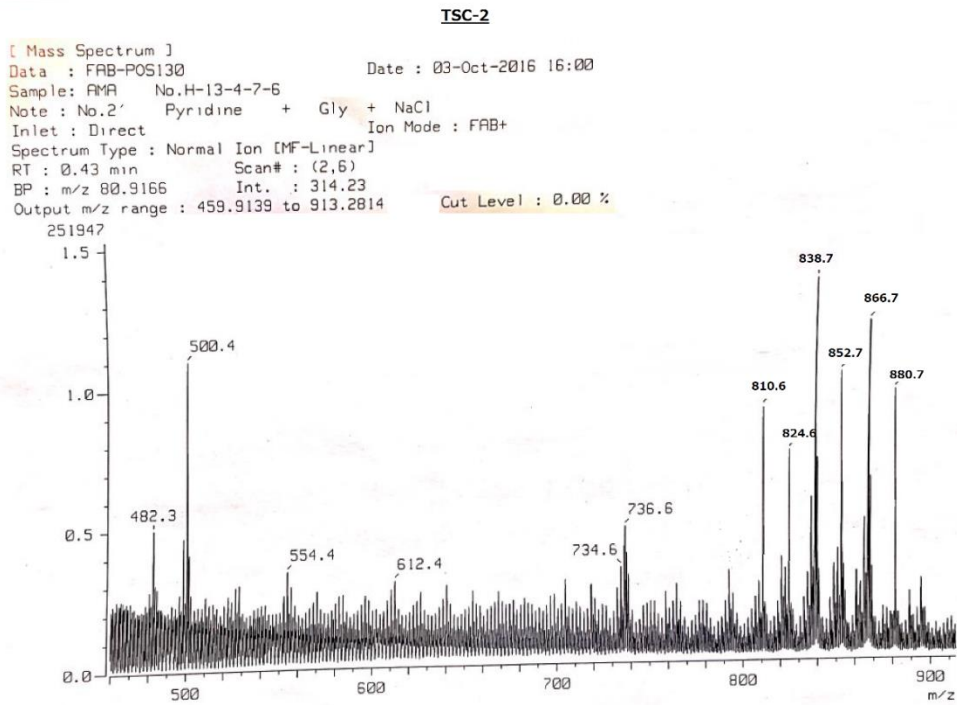


Figure S 23. FAB MASS data of TSC-1-FAME

TSC-1-FAME

[Mass Spectrum]
Data : FAB-POS-452 Date : 17-Mar-2017 11:32
Sample : AMA No.TSC-1-FAME
Note : No.1 CHCl3 + mNBA
Inlet : Direct Ion Mode : FAB+
RT : 0.00 min Scan# : (1,7)
BP : m/z 55.1719
Cut Level : 0.00 %

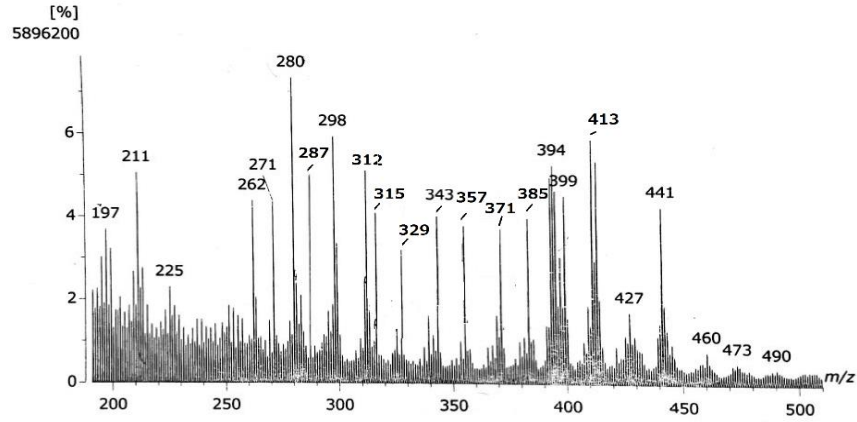


Figure S 24. FAB MASS data of TSC-2-FAME

TSC-2-FAME

[Mass Spectrum]
Data : FAB-POS-456 Date : 17-Mar-2017 11:58
Sample : AMA No.TSC-2-FAME
Note : No.1 CHCl3 + mNBA
Inlet : Direct Ion Mode : FAB+
RT : 0.00 min Scan# : (1,7)
BP : m/z 55.1719
Cut Level : 0.00 %

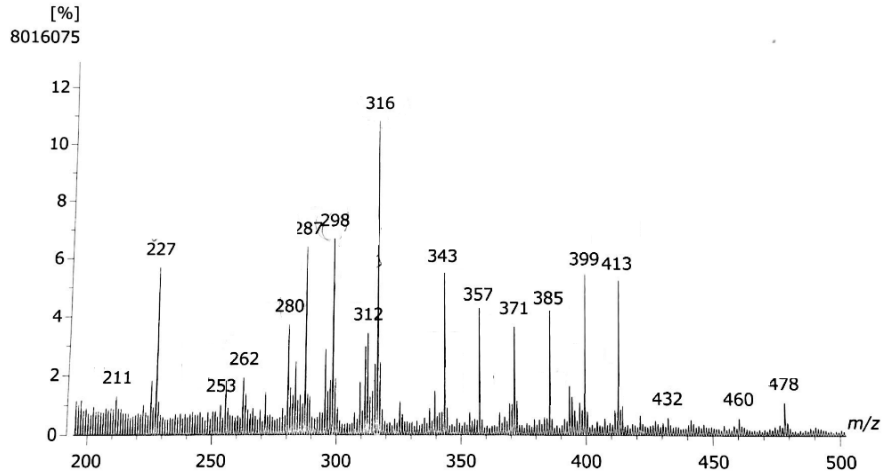


Figure S 25. FAB MASS data of TSC-1-LCB-1

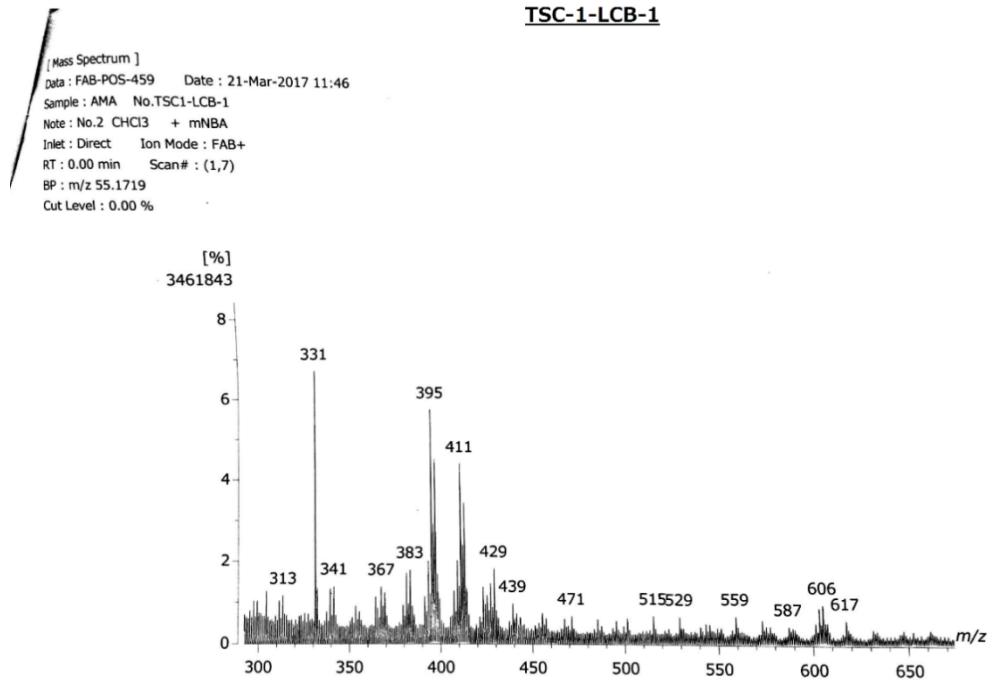


Figure S 26. FAB MASS data of TSC-1-LCB-2

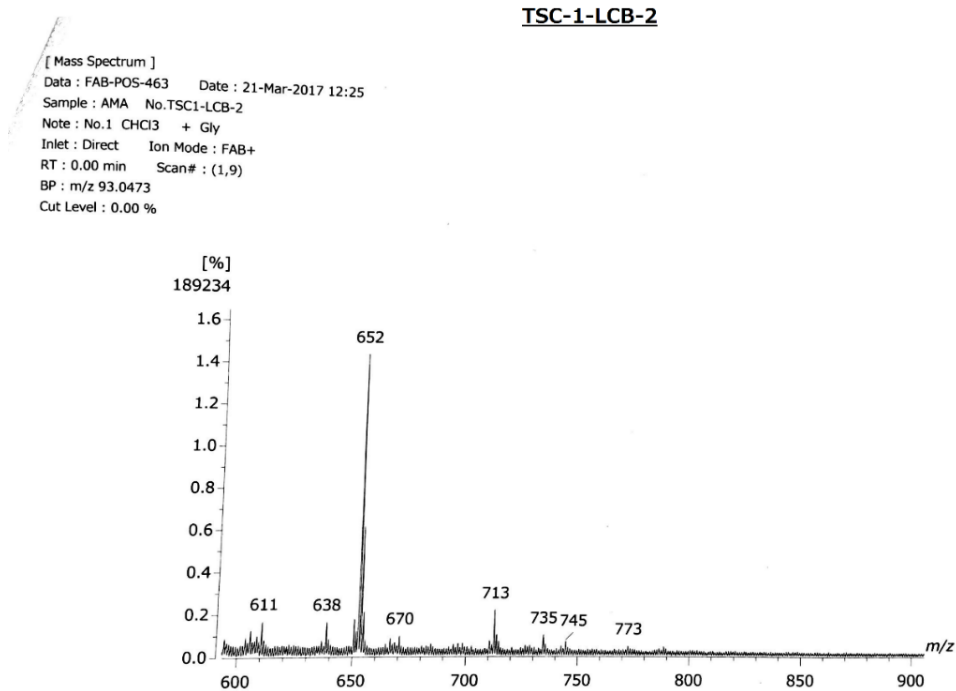


Figure S 27. FAB MASS data of TSC-2-LCB-1

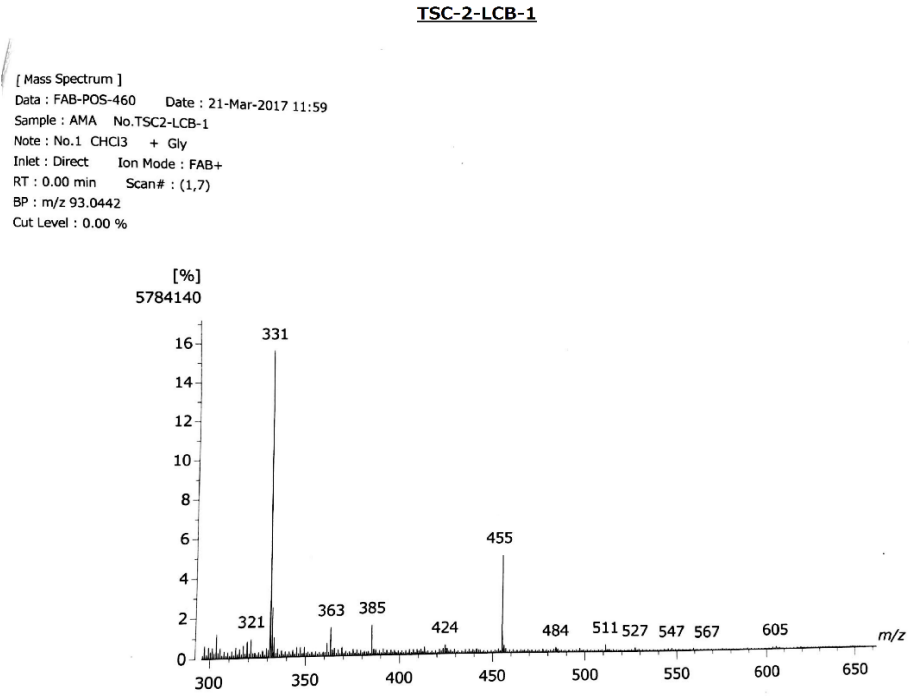


Figure S 28. FAB MASS data of TSC-2-LCB-2

