

Supplementary data

Fig. S1 Effect of organic solvent, ionic strength and pH value on the sensitivity of IMA and BAS-IMB.

Fig. S2 The matrix effect of agricultural product samples on the sensitivity of BAS-IMB for detecting AFB₁.

Fig. S3 The example of chromogenic results of BAS-IMB in standard serial concentrations of AFB₁.

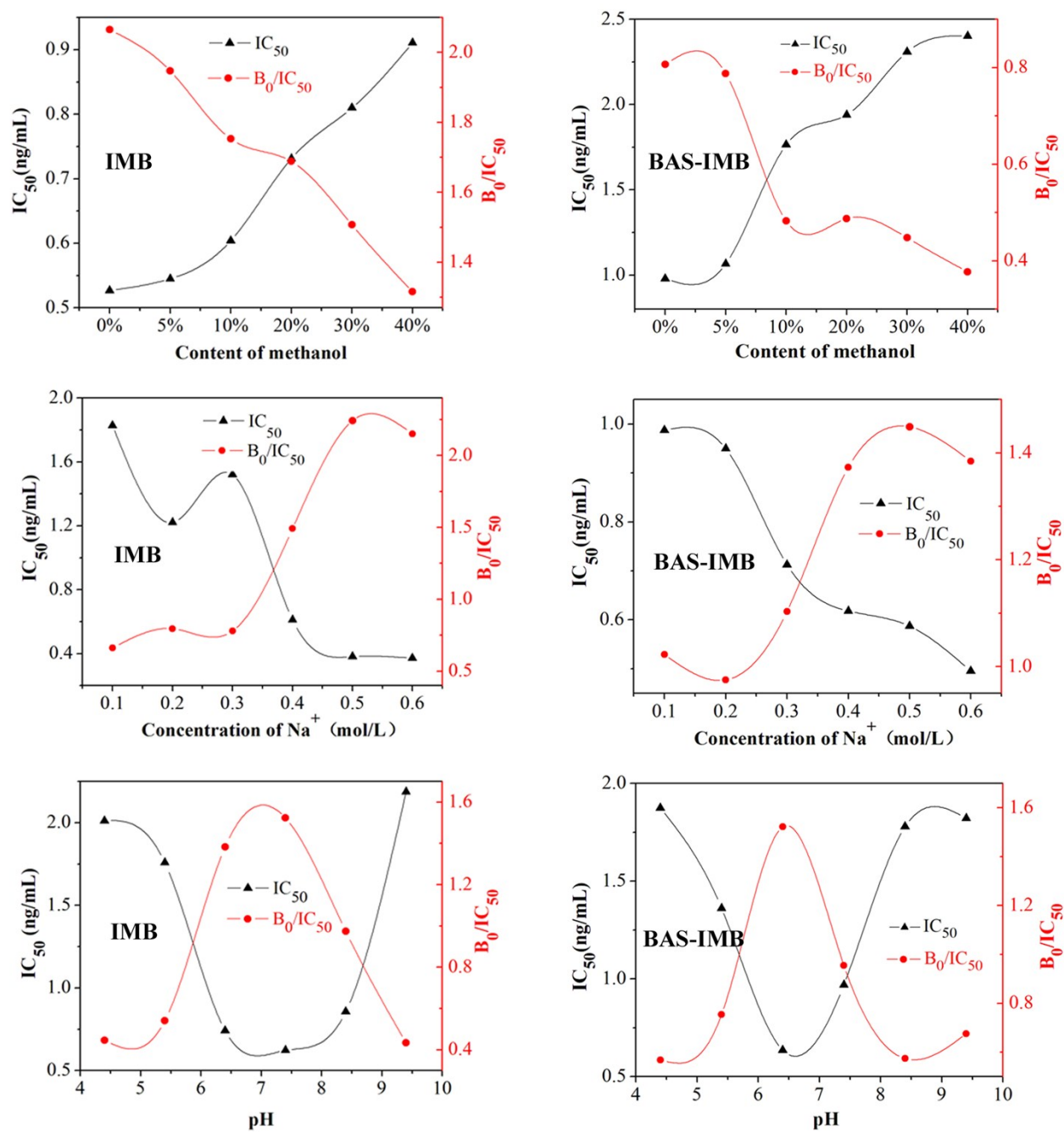


Fig. S1 Effect of organic solvent, ionic strength and pH value on the sensitivity of IMA and BAS-

IMA.

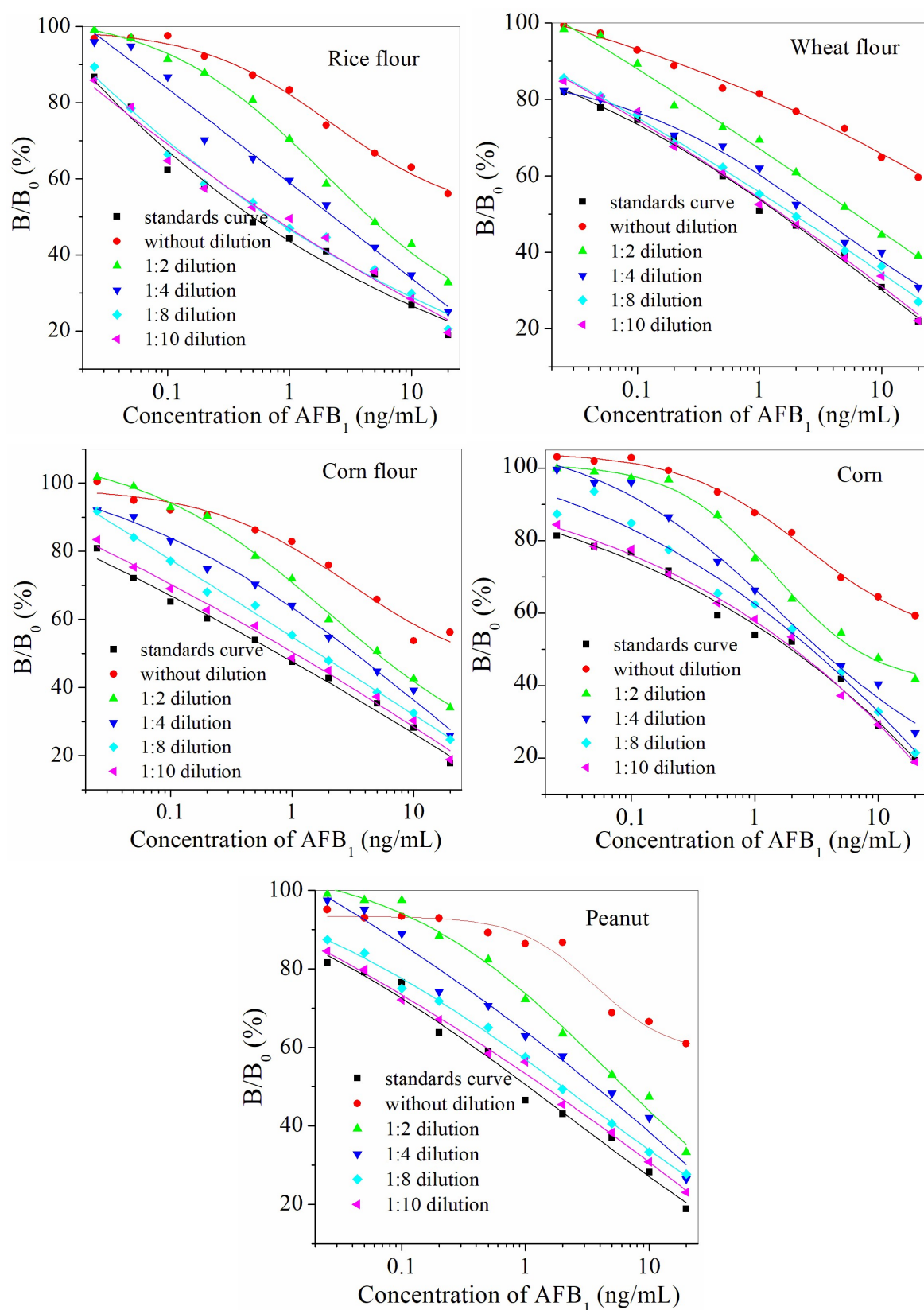


Fig. S2 The matrix effect of samples on the sensitivity of the BAS-IMB for detecting AFB_1 .

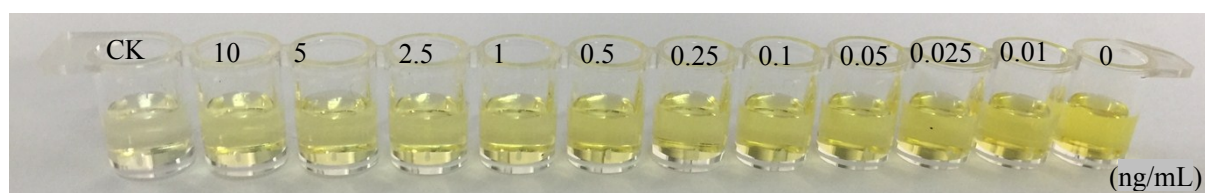


Fig. S3 The example of chromogenic results of BAS-IMB in standard serial concentrations of AFB₁.