

Table S1 The canonical pathways by IPA analysis

Ingenuity Canonical Pathways	$-\log(p\text{-value})$	Ratio	Molecules
FXR/RXR Activation	5.47	0.273	deoxycholate,chenodeoxycholic acid,choleic acid
Taurine Biosynthesis	1.68	0.167	taurine
Hepatic Cholestasis	1.29	0.0667	chenodeoxycholic acid
Bile Acid Biosynthesis, Neutral Pathway	0.921	0.0278	taurine

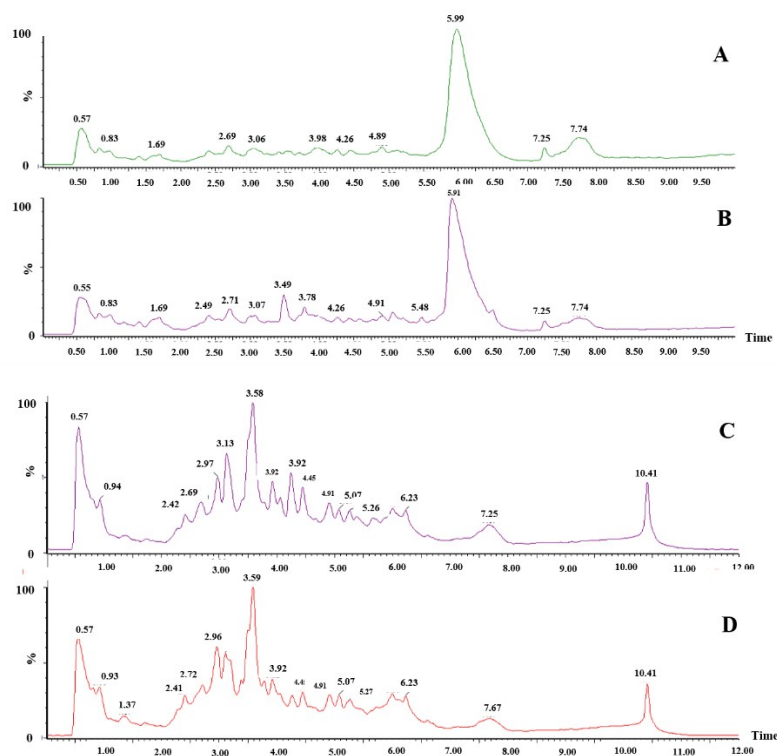


Figure S1 The BPI spectrum of the urine samples between the control group and model group on the 70th day

A. The BPI spectrum of the control group in the positive ion mode; B. The BPI spectrum of the model group in the positive ion mode; C. The BPI spectrum of the control group in the negative ion mode; D. The BPI spectrum of the control group in the negative ion mode.

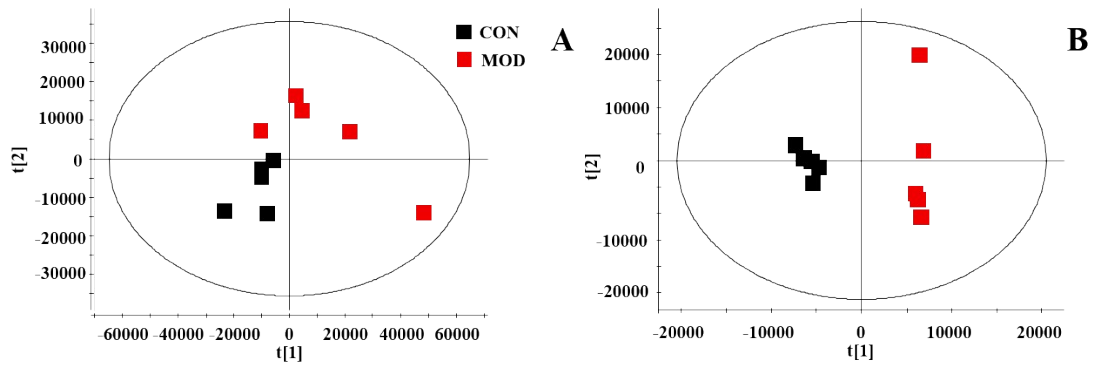


Figure S2 The OPLS-DA plot between the control group and the model group
 A. 2D OPLS-DA plot in the positive ion mode. Red squares represent model groups and black squares represent control groups. B. 2D OPLS-DA plot in the negative ion mode.

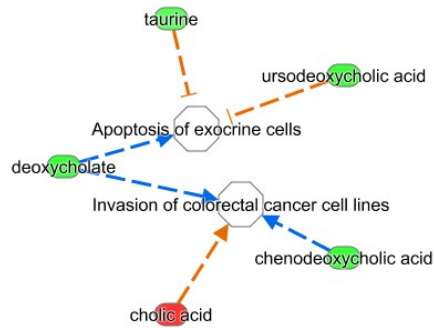


Figure S3 The relationship of chenodeoxycholic acid and CRC cell lines