

Electronic supplementary information (ESI)

A MOF-Based Carrier for *in Situ* Dopamine Delivery

*Alessandra Pinna,^a Raffaele Ricco,^b Rossana Migheli,^c Gaia Rocchitta,^c Pier Andrea Serra,^c
Luca Malfatti,^d Paolo Falcaro^b and Plinio Innocenzi,^{d*}*

a) Department of Materials, Imperial College London, South Kensington Campus, London, SW7
2AZ, UK.

b) Graz University of Technology, Institute of Physical and Theoretical Chemistry, Stremayrgasse
9, 8010 Graz, Austria.

c) Dipartimento di Medicina Clinica e Sperimentale, Università di Sassari, Viale S. Pietro 43 B,
07100 Sassari, Italy

d) Laboratorio di Scienza dei Materiali e Nanotecnologie, CR-INSTM, Università di Sassari,
Dipartimento di Chimica e Farmacia, via Vienna 2, 07100 Sassari, Italy. E-mail: plinio@uniss.it

CONTENTS:

1. **Figure S1.** Diameter calculation of the PMP@MIL-88A systems.
2. **Figure S2.** N₂ isotherms and pore size distributions of MIL-88A(Fe) with and without dopamine loading.

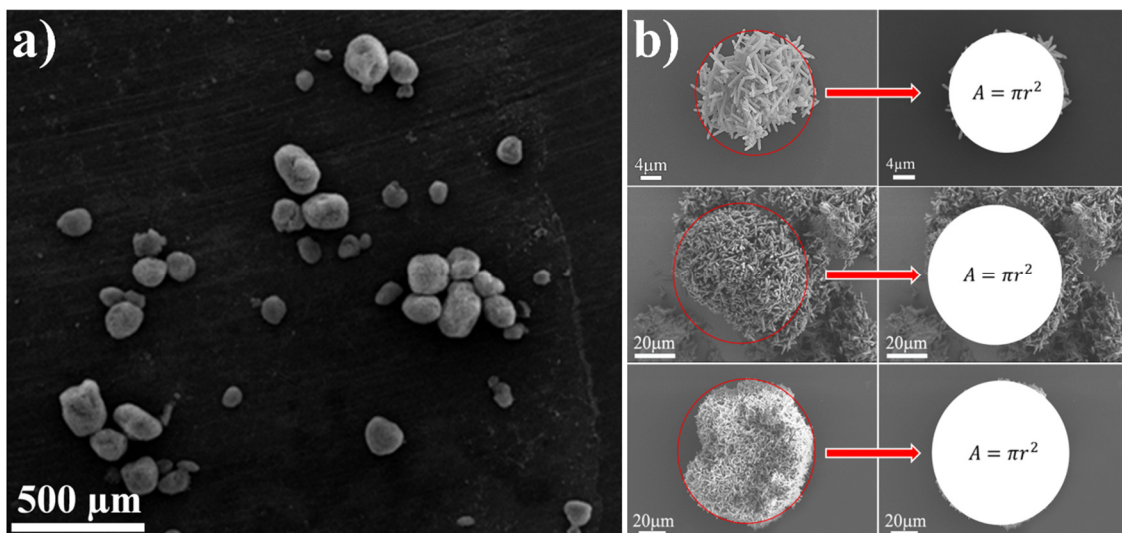


Fig. S1. Method used to calculate PMP@MIL-88A size: a) SEM image of PMP@MIL-88A aggregates; b) each particle was considered as sphere and then the equivalent diameter was calculated averaging several measurements.

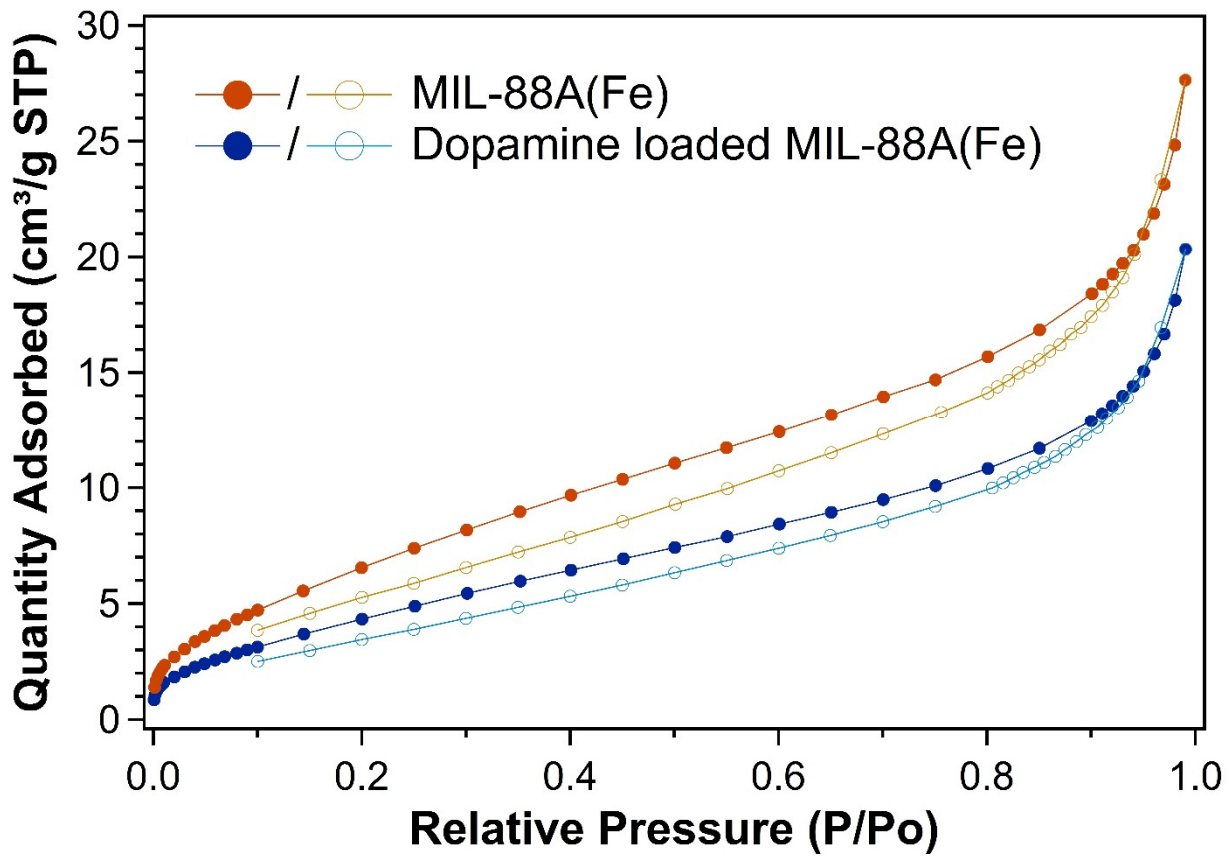


Figure S2. N₂ sorption/desorption isotherms of unloaded (orange) and dopamine-loaded (blue) MIL-88A(Fe).