

**Electronic Supplementary Material (ESI) for RSC Advances.
This journal is © The Royal Society of Chemistry 2018**

Supplementary Information

Novel oligopeptide nanoprobe for targeted cancer cell imaging

Wen-Qiang Ding,^a Si-Yong Qin,^{*,a} Yin-Jia Cheng,^a Yi-Han Ma^a and Ai-Qing
Zhang^{*,a}

^aCollege of Chemistry and Materials Science, South-Central University for
Nationalities, Wuhan 430074, P. R. China.

E-mail: sy-qin@mail.scuec.edu.cn; aizhang@scuec.edu.cn.

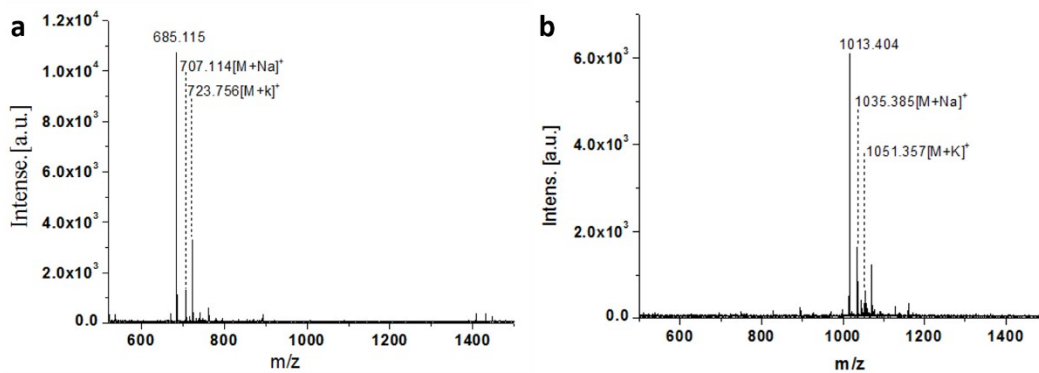


Fig. S1 The MALDI-TOF-MS of WFFW (a) and RGDWFFW (b).

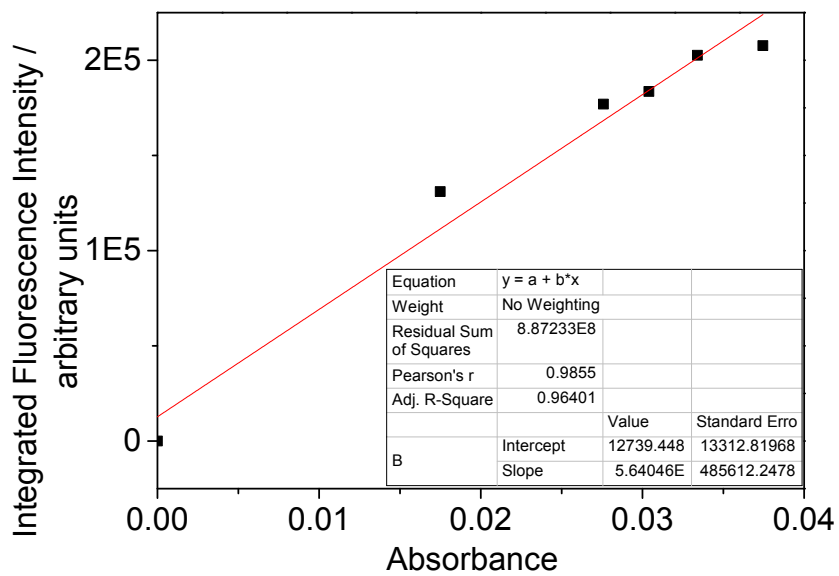


Fig. S2 The linear plot for Rhodamine B in ethanol (90%, 400 nm excitation).

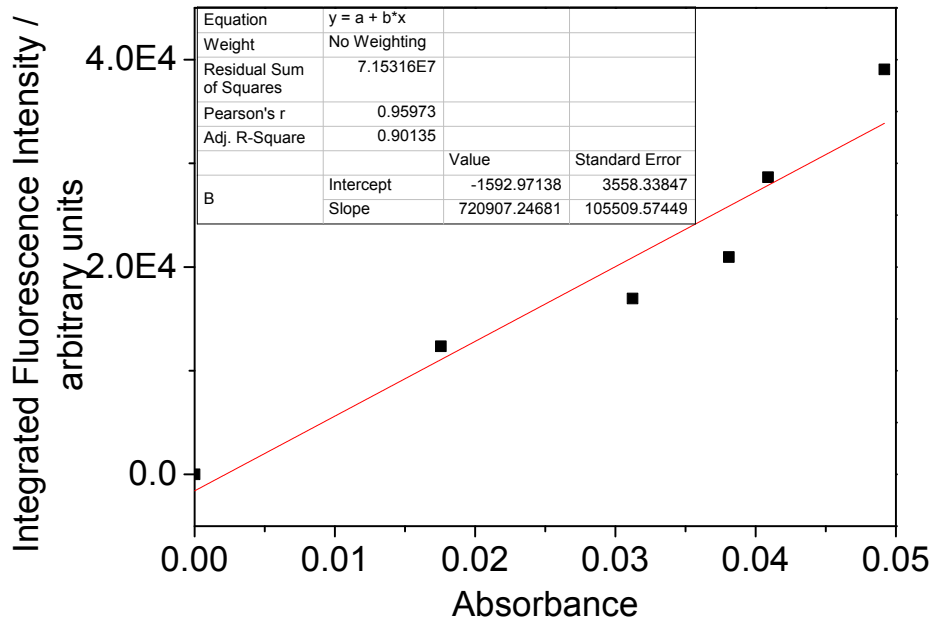


Fig. S3 The linear plot for TPNS sample.

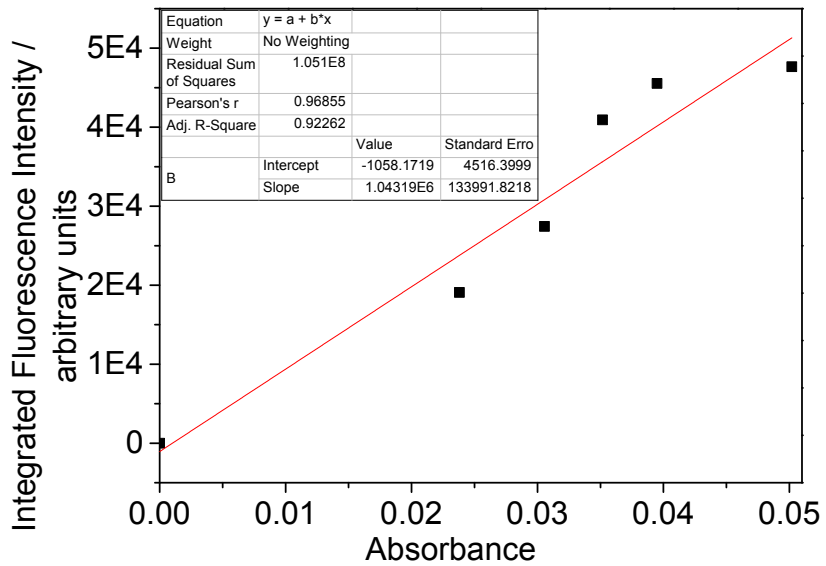


Fig. S4 The linear plot for H-TPNS sample.

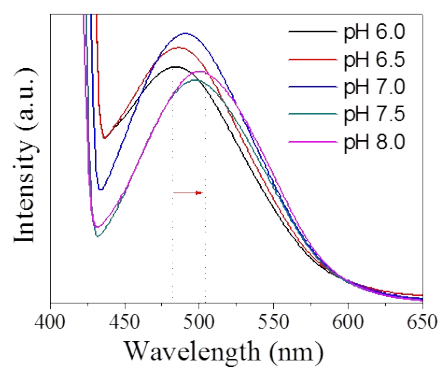


Fig. S5 The fluorescent spectra of TPNS at different pHs.

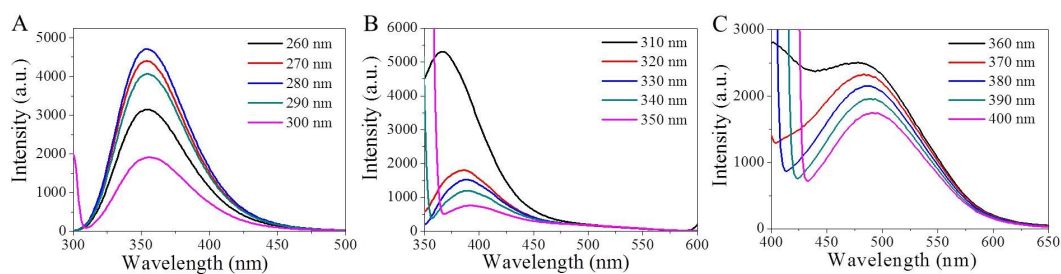


Fig. S6 The fluorescent spectra of TPNS under different excitation wavelengths.

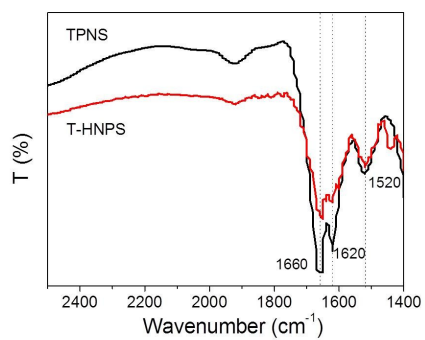


Fig. S7 FT-IR spectra of TPNS and T-HNPS.

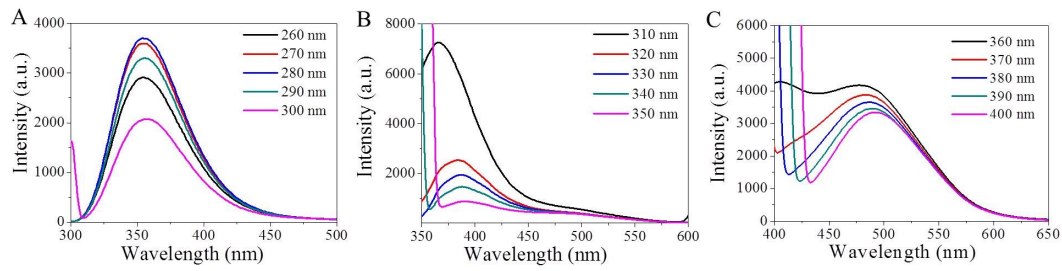


Fig. S8 The fluorescent spectra of H-TPNS under different excitation wavelengths.

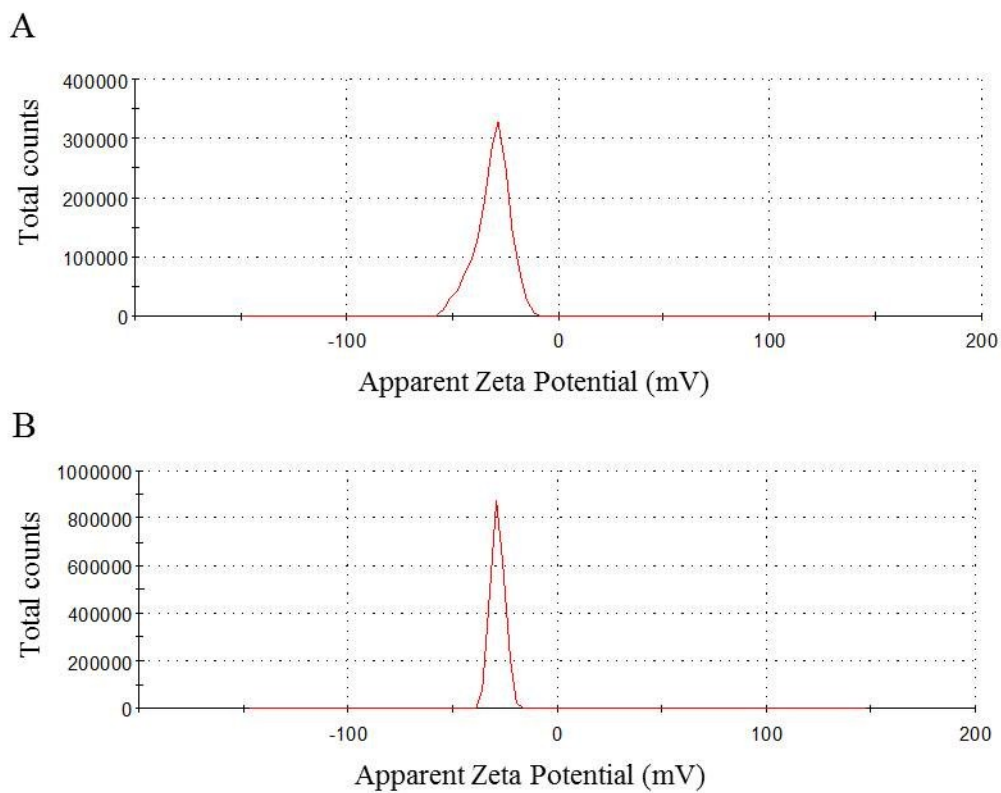


Fig. S9 ζ -potentials of TPNS (A) and H-TPNS nanoprobes (B).