

Revised Electronic Supplementary Information for

**Superb Adsorption Capacity of Biochar Derived from Leather Shavings for Congo**

**Red**

Xueping Huang, Fan Yu, Qifan Peng and Yaqin Huang\*

Beijing Laboratory of Biomedical Materials, Beijing Key Laboratory of Electrochemical  
Process and Technology for Material, Beijing University of Chemical Technology,  
Beijing 100029, People's Republic of China.

\*Corresponding author:

Yaqin Huang

Beijing University of Chemical Technology

Beijing 100029

People's Republic of China

E-mail address: huangyq@mail.buct.edu.cn

Tel: +86-10-64438266

Fax: +86-10-64438266

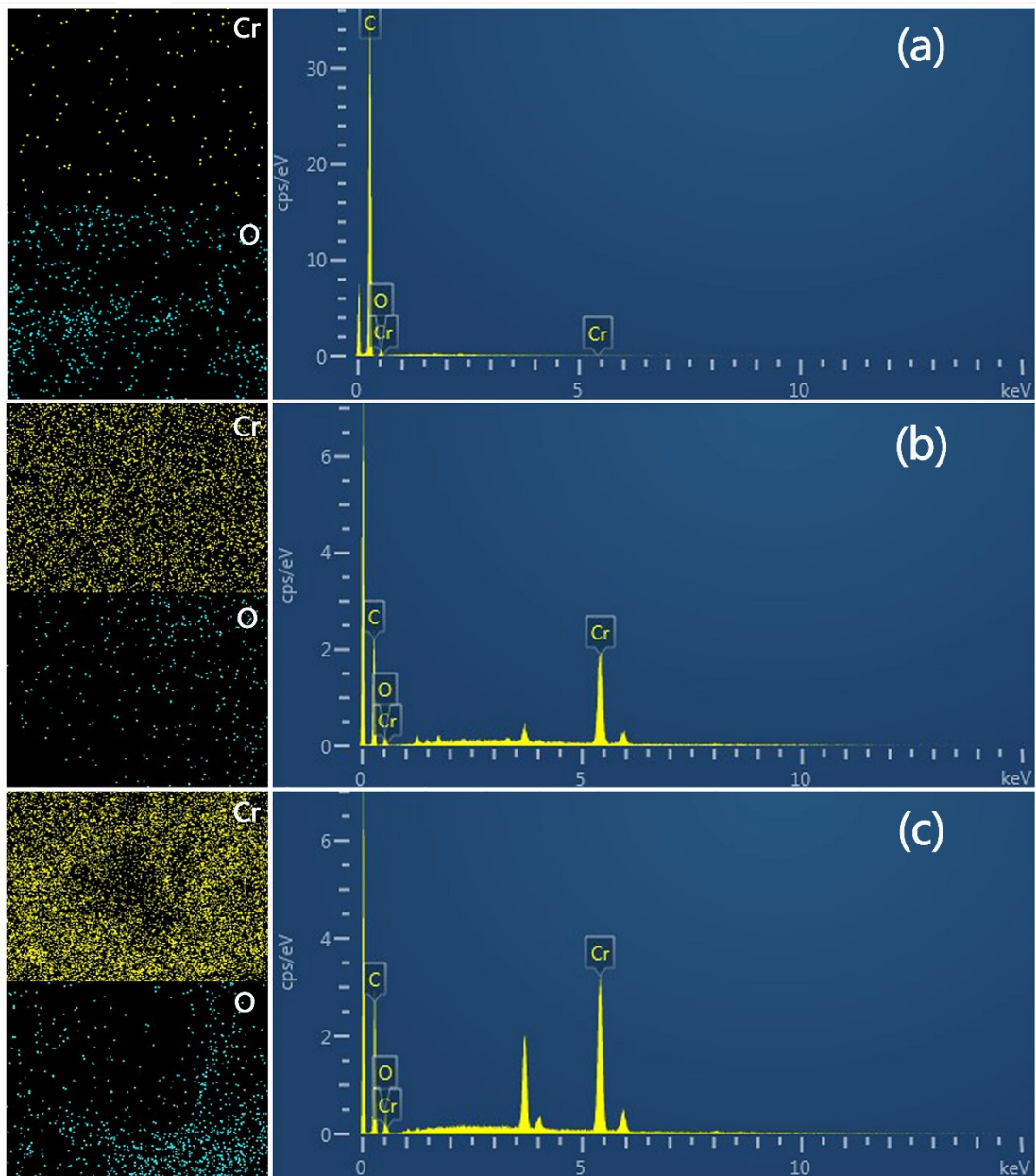


Fig. S1 EDS mapping of (a) AC, (b) LSB750 and (c) LSB900.

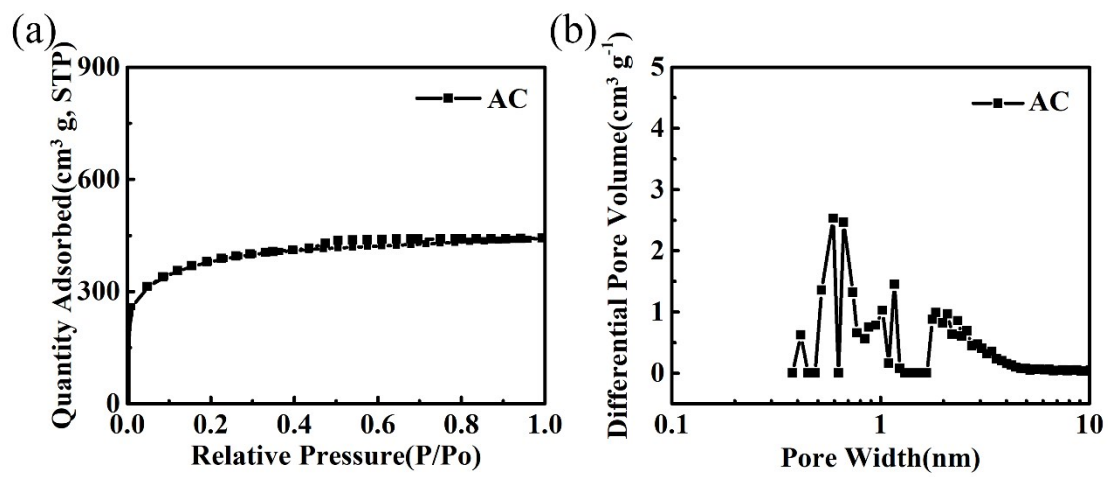


Fig. S2 (a) N<sub>2</sub> adsorption/desorption isotherms and (b) pore size distributions (PSD) of AC

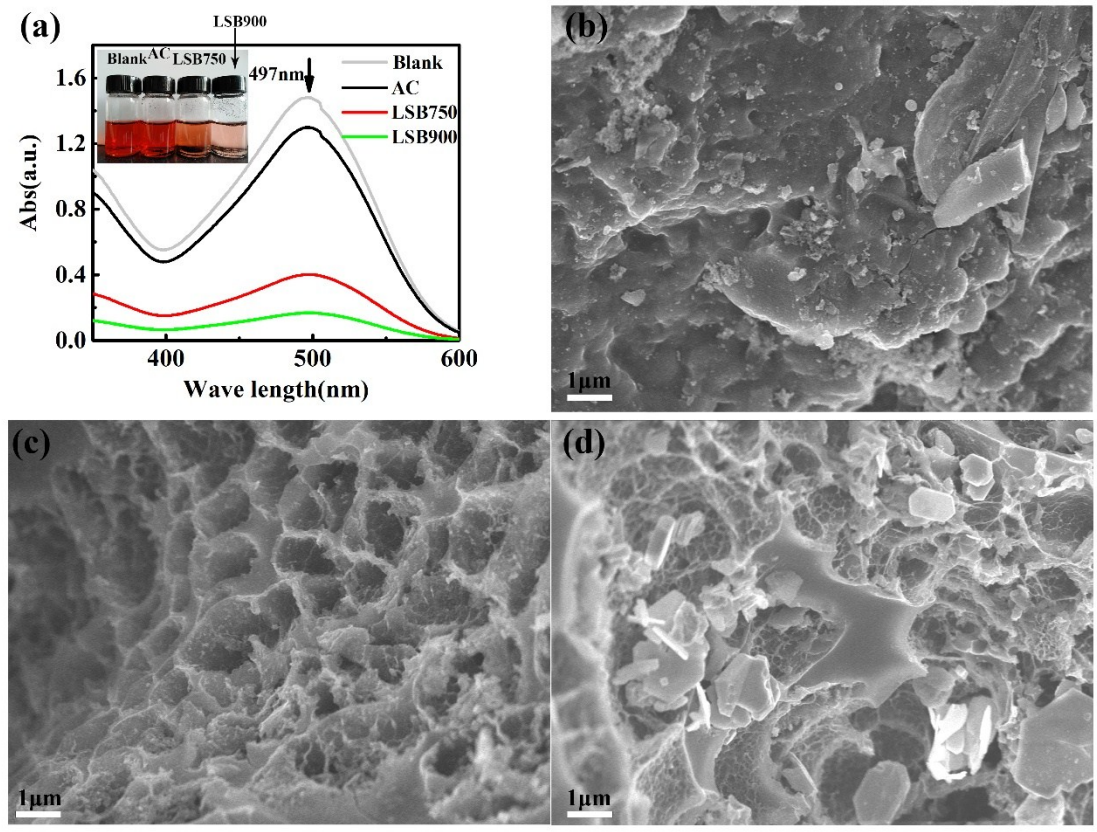


Fig. S3 (a) UV-visible spectra of adsorbents; SEM images of (b) AC, (c) LSB750 and (d) LSB900 after adsorption for CR for 4 hours (200ppm).

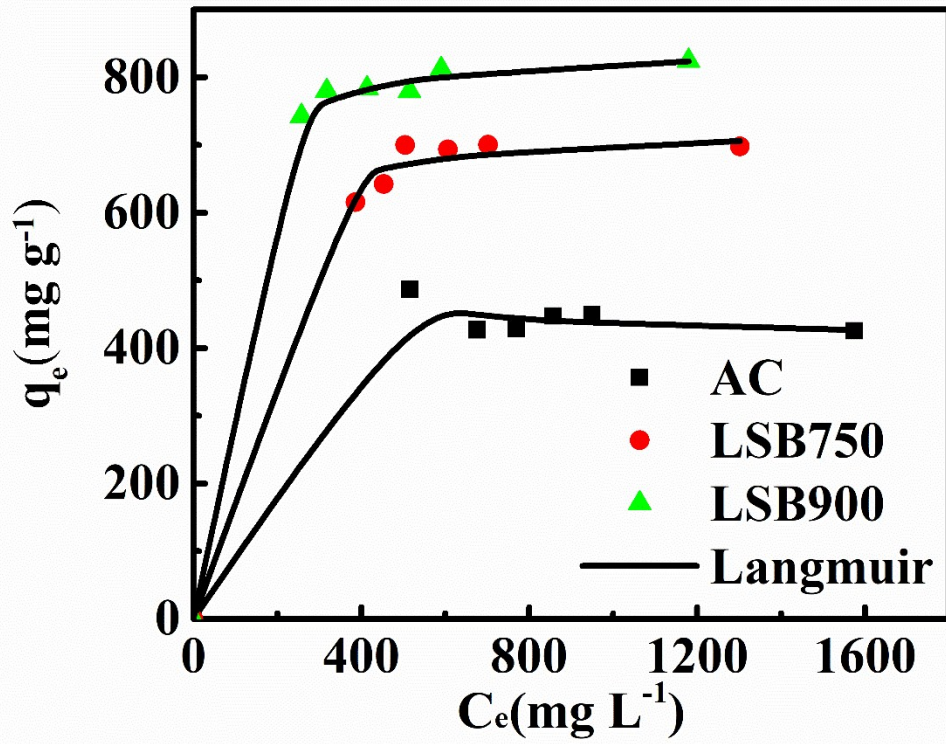


Fig. S4 Langmuir isotherm model for adsorption capacity of the adsorbents for Methyl Orange