

## *Supporting Information*

# **Polyellisin, a Novel Polyketide from Cultures of the Basidiomycete *Polyporus ellisii***

**Shuang Wang<sup>a,b</sup>, Zheng-Hui Li<sup>a</sup>, Hong-Lian Ai<sup>a</sup>, Juan He<sup>a</sup>, Tao Feng<sup>a</sup>, and Ji-Kai Liu<sup>a,\*</sup>**

<sup>a</sup>*School of Pharmaceutical Sciences, South-Central University for Nationalities, Wuhan 430074, China*

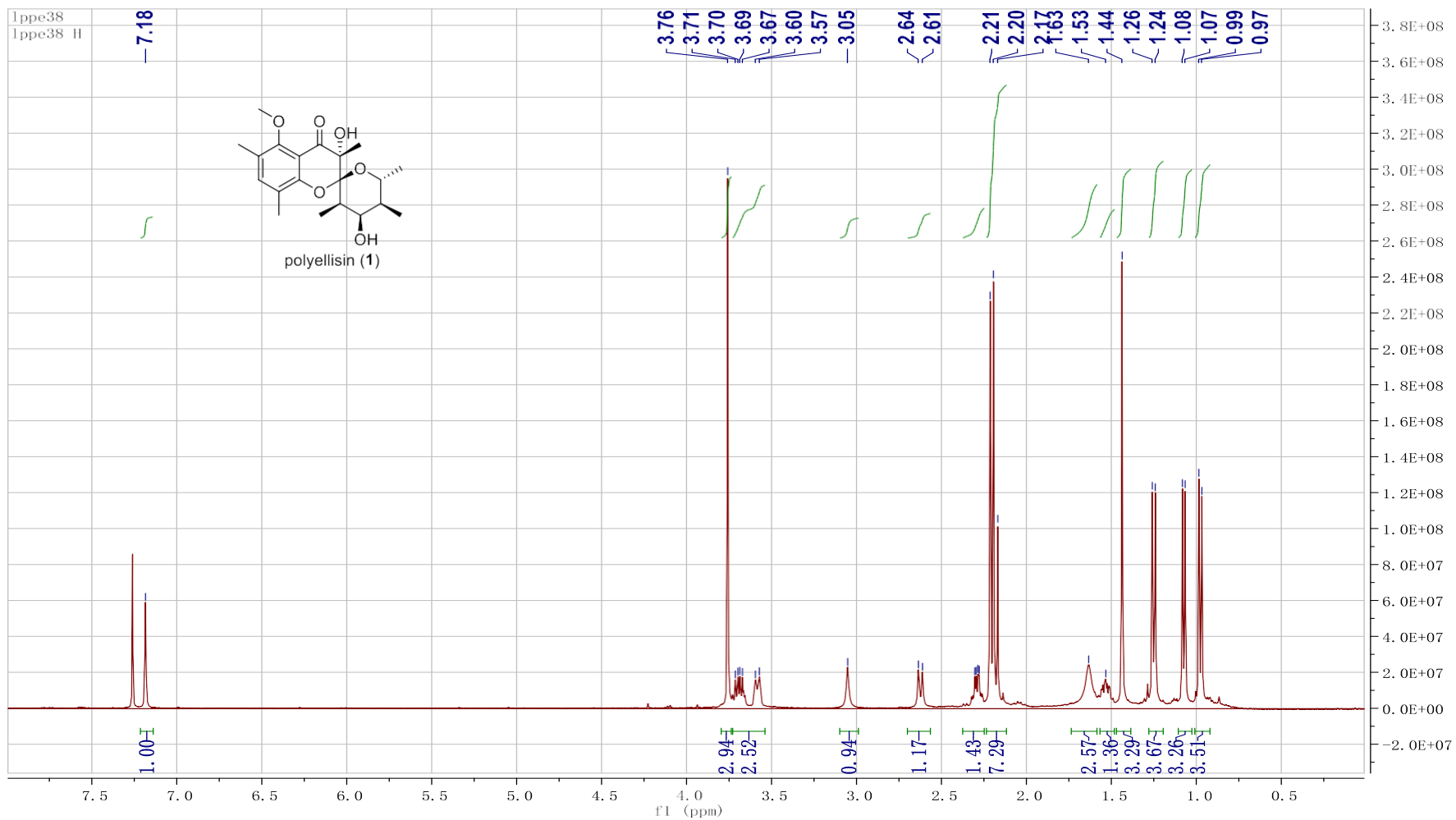
<sup>b</sup>*College of Pharmacy and Chemistry, Dali University, Dali 671000, China*

\**Corresponding author. E-mail: tfeng@mail.scuec.edu.cn (T. Feng); jkliu@mail.kib.ac.cn (J.-K. Liu)*

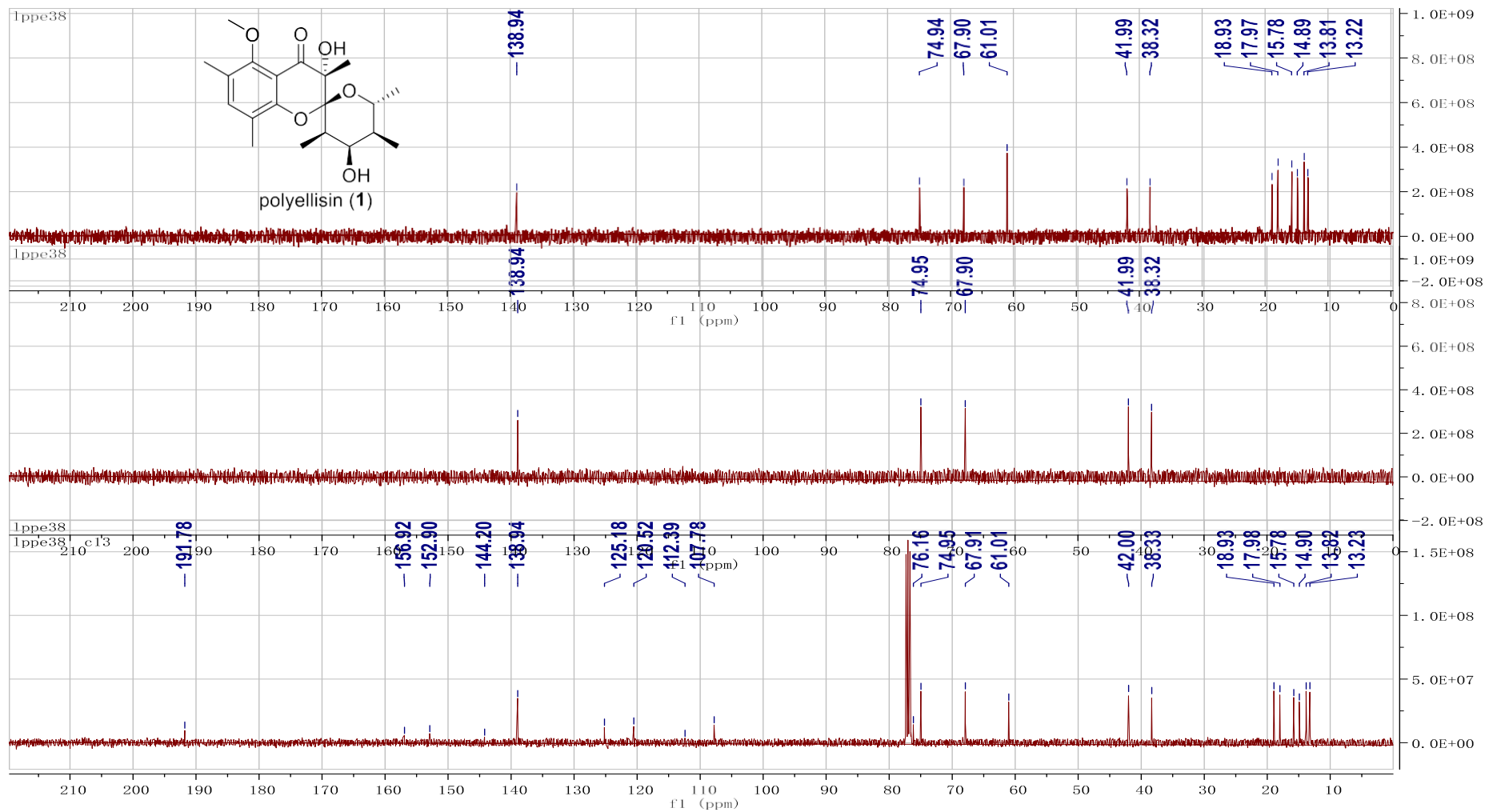
## **Supplementary data**

Figure S1. <sup>1</sup> H NMR (500 MHz, CDCl <sub>3</sub> ) spectrum of polyellisin ( <b>1</b> ).....	S2
Figure S2. <sup>13</sup> C NMR and DEPT spectrum of polyellisin ( <b>1</b> ).....	S3
Figure S3. <sup>1</sup> H- <sup>1</sup> H COSY spectrum of polyellisin ( <b>1</b> ).....	S4
Figure S4. HQSC spectrum of polyellisin ( <b>1</b> ).....	S5
Figure S5. HMBC spectrum of polyellisin ( <b>1</b> ).....	S6
Figure S6. HRESIMS of polyellisin ( <b>1</b> ).....	S7
Figure S7. UV spectrum of polyellisin ( <b>1</b> ).....	S8
Figure S8. IR spectrum of polyellisin ( <b>1</b> ).....	S9

Figure S1. <sup>1</sup>H NMR (500 MHz, CDCl<sub>3</sub>) spectrum of polyellisin (1)



**Figure S2.**  $^{13}\text{C}$  NMR and DEPT (125 MHz,  $\text{CDCl}_3$ ) spectrum of polyellisin (1)



**Figure S3.**  $^1\text{H}$ - $^1\text{H}$  COSY spectrum of polyellisin (1)

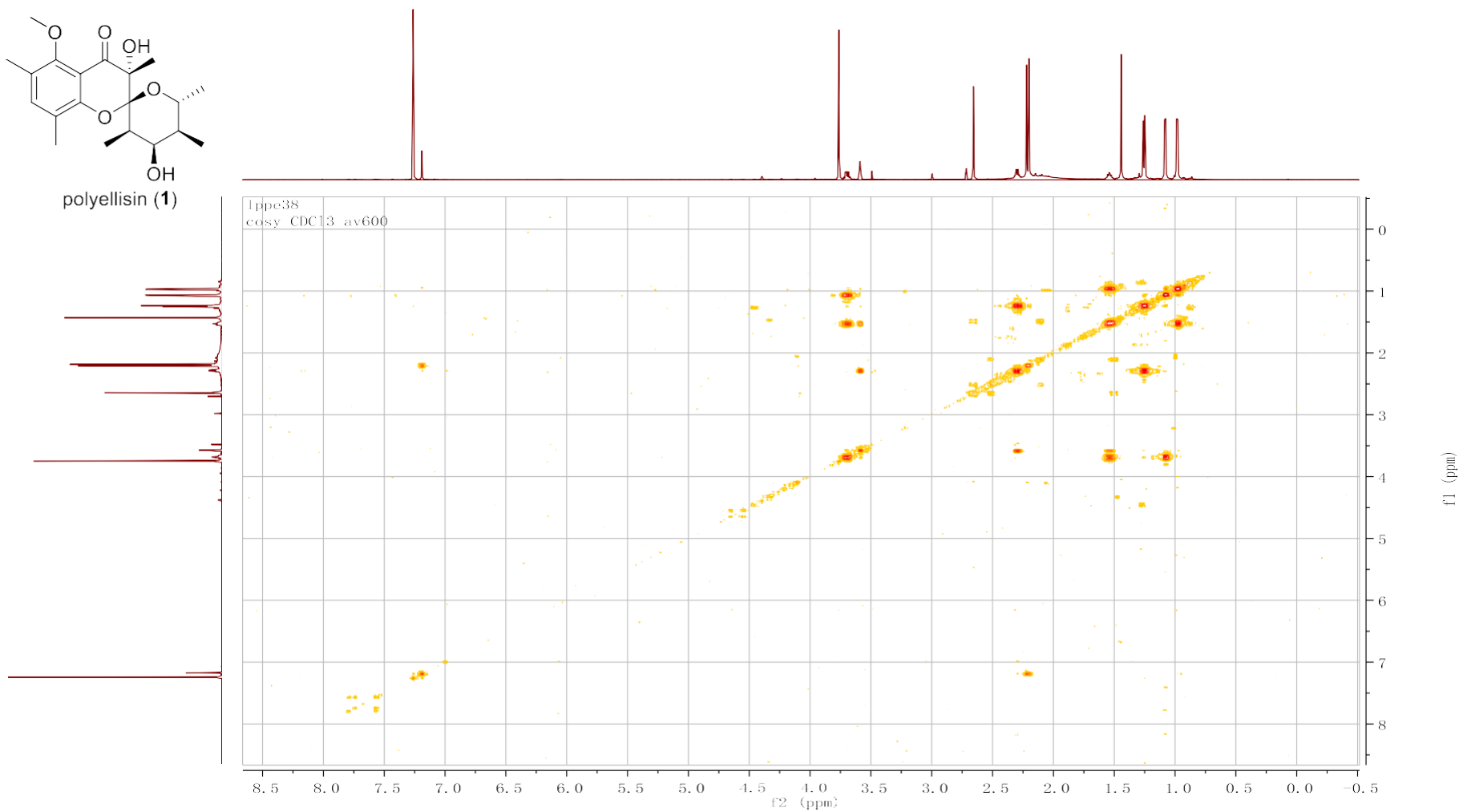
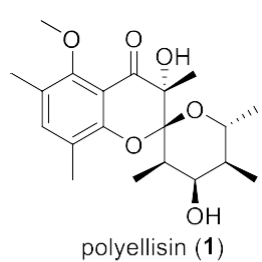


Figure S4.HQSC spectrum of polyellisin (1)

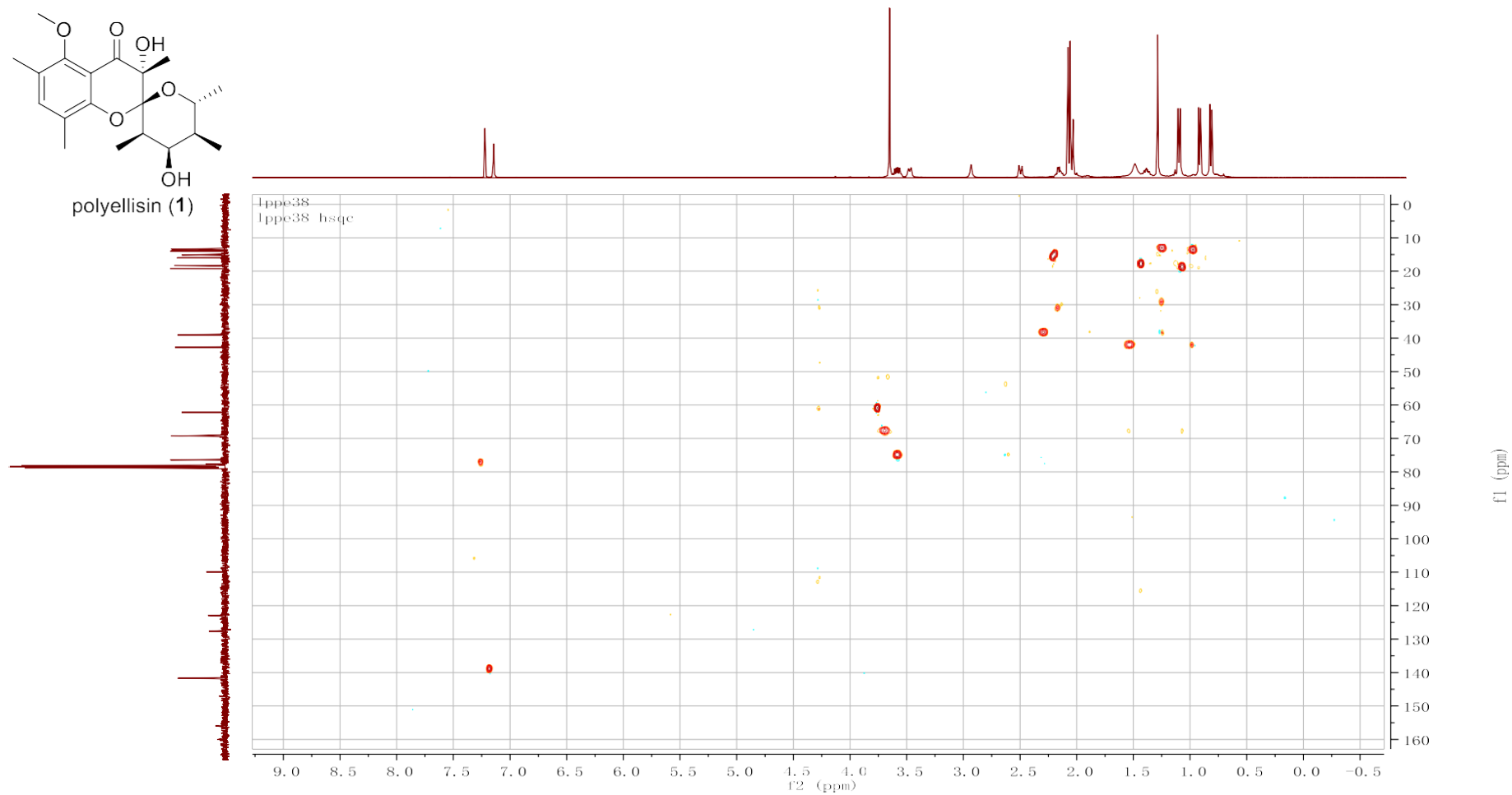
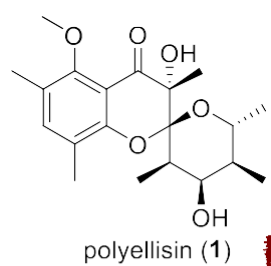


Figure S5. HMBC spectrum of polyellisin (1)

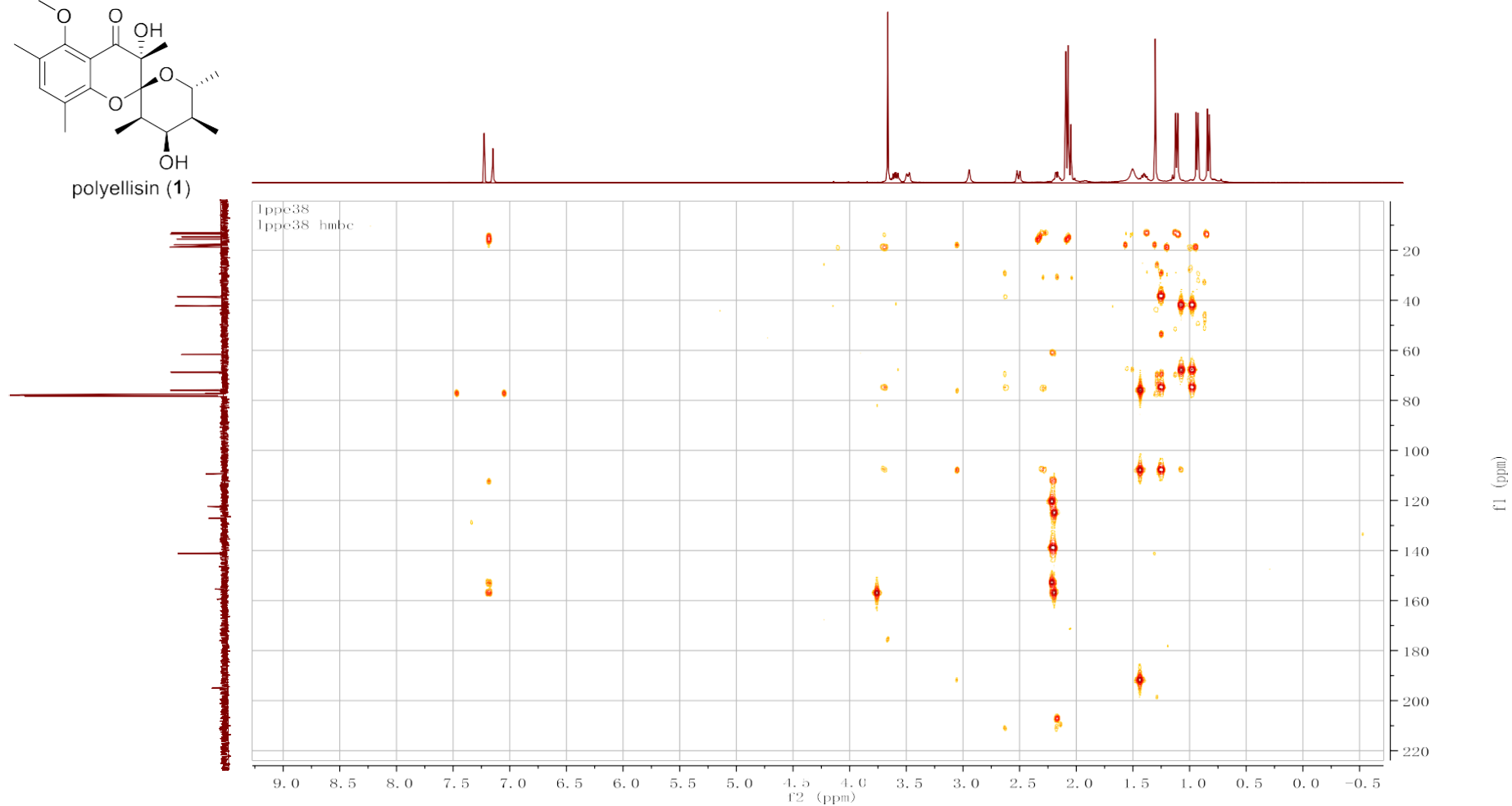
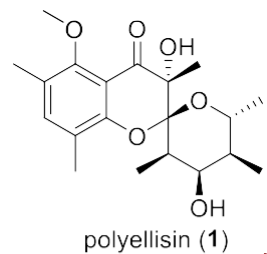


Figure S6. HRESIMS of polyellisin (1)

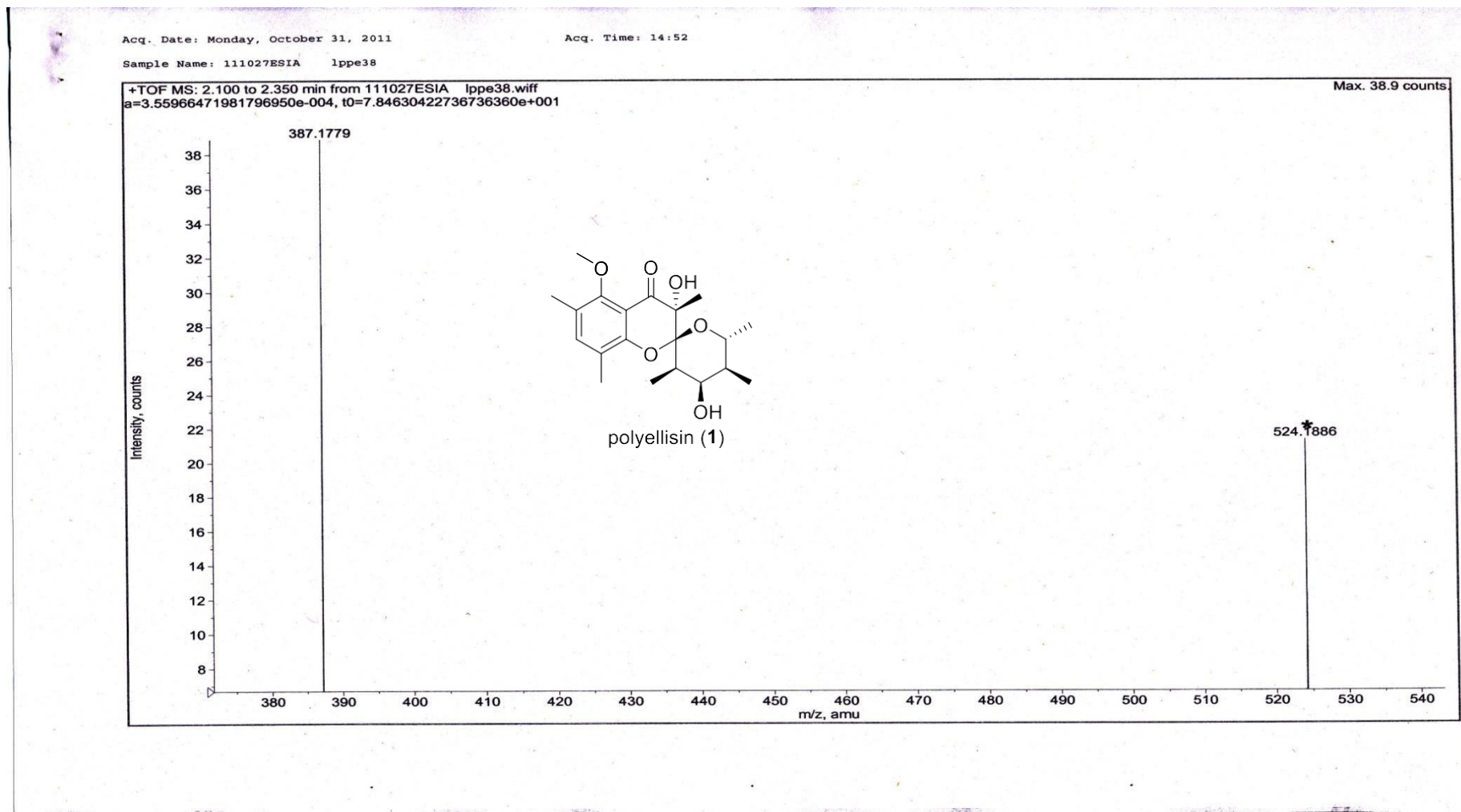


Figure S7. UV spectrum of polyellisin (1)

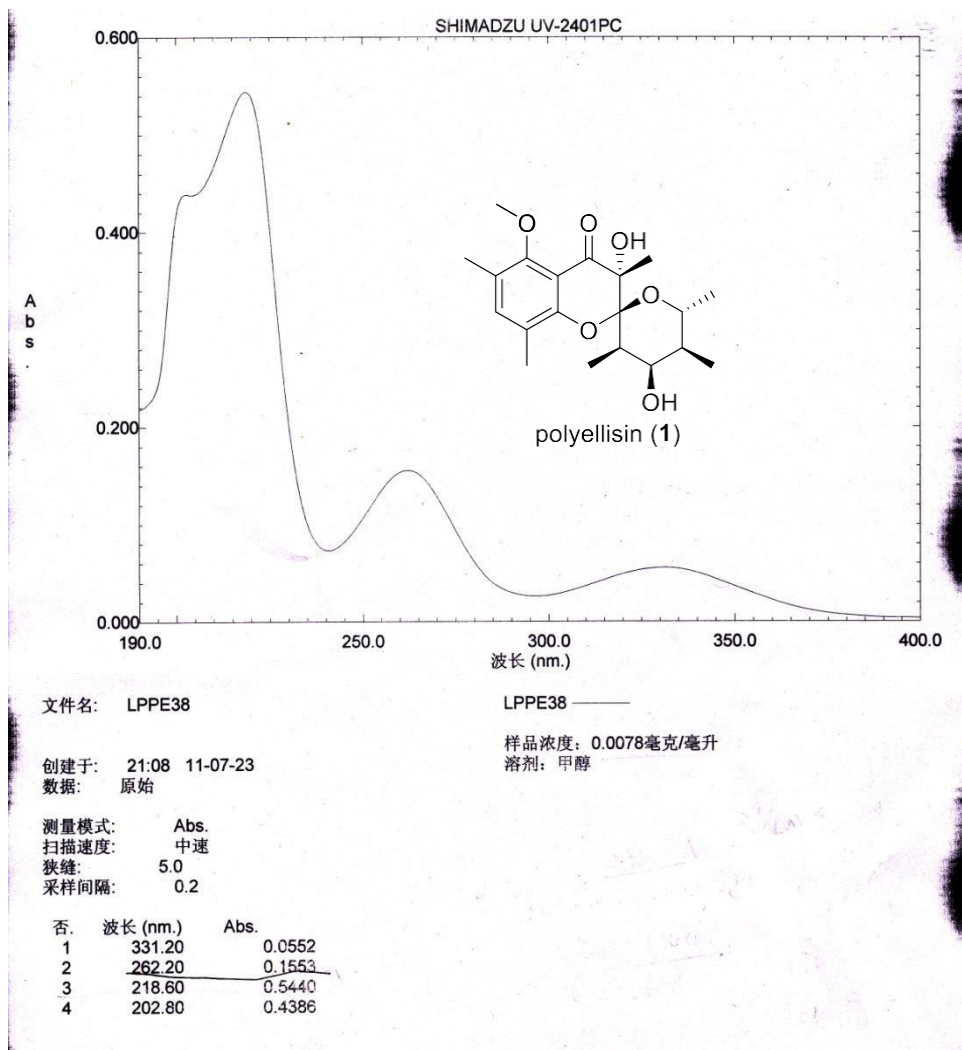
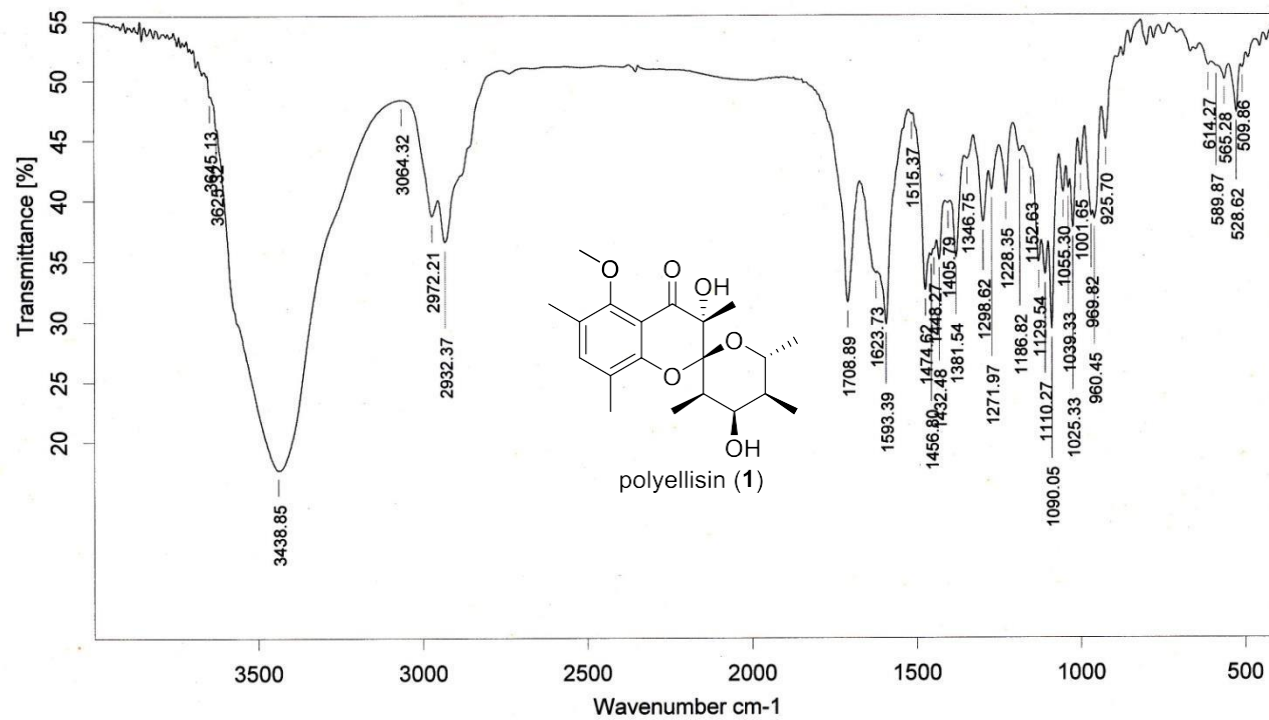




Figure S8. IR spectrum of polyellisin (1)



Sample : lppe38	Frequency Range : 399.246 - 3996.32	Measured on : 01/11/2011
Technique : KBr压片	Resolution : 4	Instrument : Tensor27
Customer : 111101IR0	Zerofilling : 2	Sample Scans : 16
	Acquisition : Double Sided,For	