

**Plasma protein binding of major components from Ling-Gui-Zhu-Gan  
decoction on metoprolol based on UPLC analysis coupled with  
ultrafiltration technique**

Peng Zhou<sup>1,2,3\*</sup>, Jinling Huang<sup>1,2,3\*</sup>, Wanxue Ding<sup>1,2</sup>

1 Department of Integrated Traditional Chinese and Western Medicine, Anhui University of Chinese Medicine, Hefei 230012, People's Republic of China

2 Research Institute of Integrated Traditional Chinese and Western Medicine, Anhui Academy of Chinese Medicine, Hefei 230012, People's Republic of China

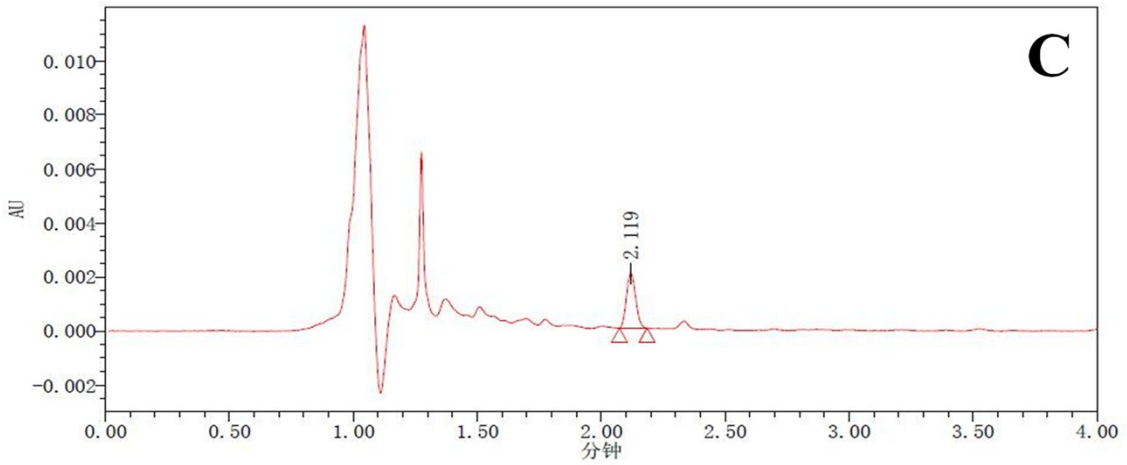
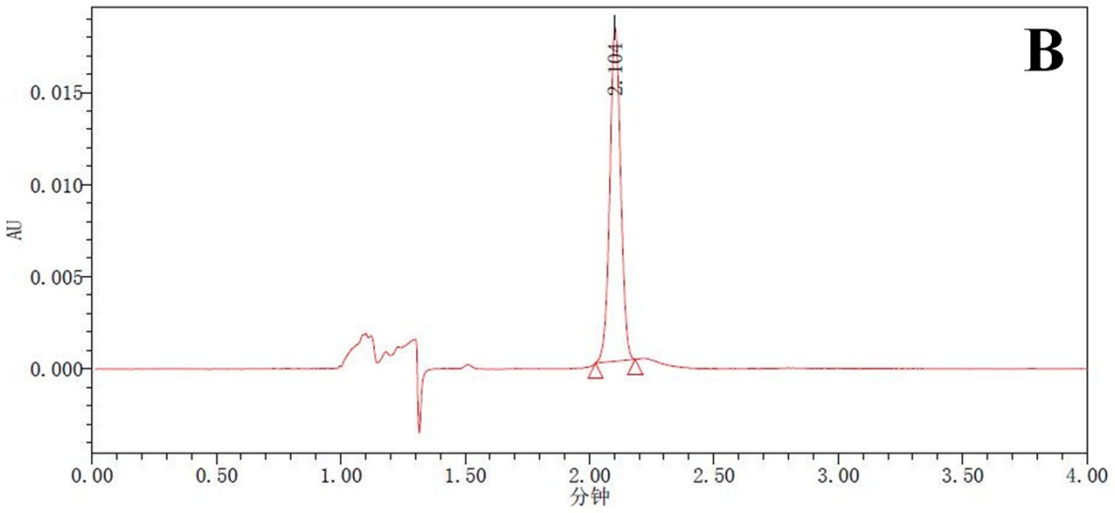
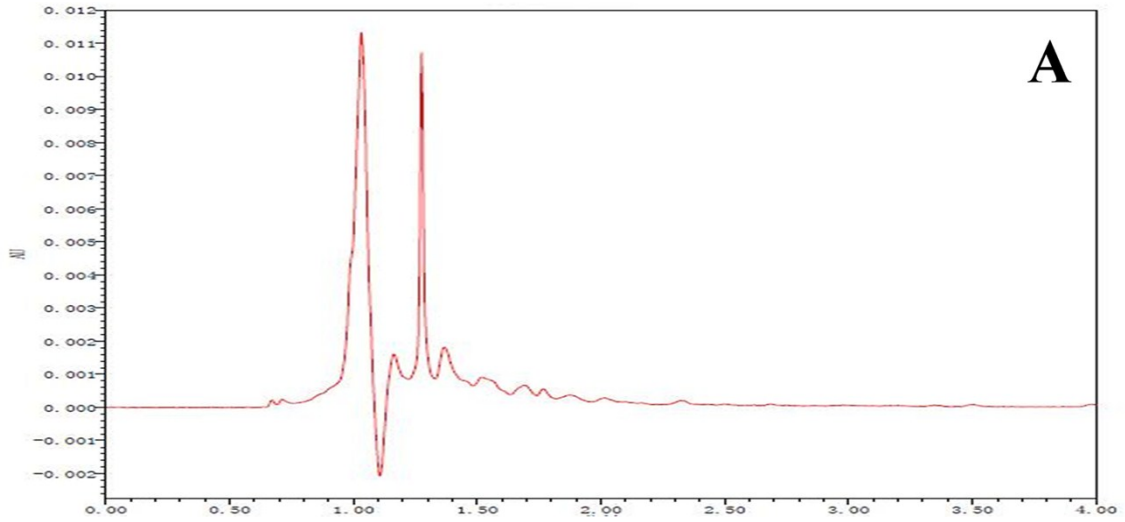
3 Key Laboratory of Chinese Herbal Compound Formula in Anhui Province, Hefei 230012, People's Republic of China

\*Corresponding to: Dr. Peng Zhou, Professor. Jinling Huang, Department of Integrated Traditional Chinese and Western Medicine, Anhui University of Chinese Medicine; Research Institute of Integrated Traditional Chinese and Western Medicine, Anhui Academy of Chinese Medicine, Key Laboratory of Chinese Herbal Compound Formula in Anhui Province, Hefei 230012, People's Republic of China.

Office Phone: +86-0551-68129468

Office Fax: +86-0551-68129468

E-mail address: [zp0108@126.com](mailto:zp0108@126.com); [jinling6181@126.com](mailto:jinling6181@126.com).



**Fig.1S** UPLC specificity chromatograms of metoprolol in BSA

A: Blank BSA; B: Metoprolol; C: Blank BSA + Metoprolol