

Supporting Information

Bamboo Leaves Based Carbon Dots as an Efficient Tumor Imaging and Therapy

Mochamad Zakki Fahmi,^{a*} Abdul Haris,^a Ahmadi Jaya Permana,^a Denika Liyan Nor Wibowo,^a Bambang Purwanto,^b Yatim Lailun Nikmah,^c Adi Idris.^d

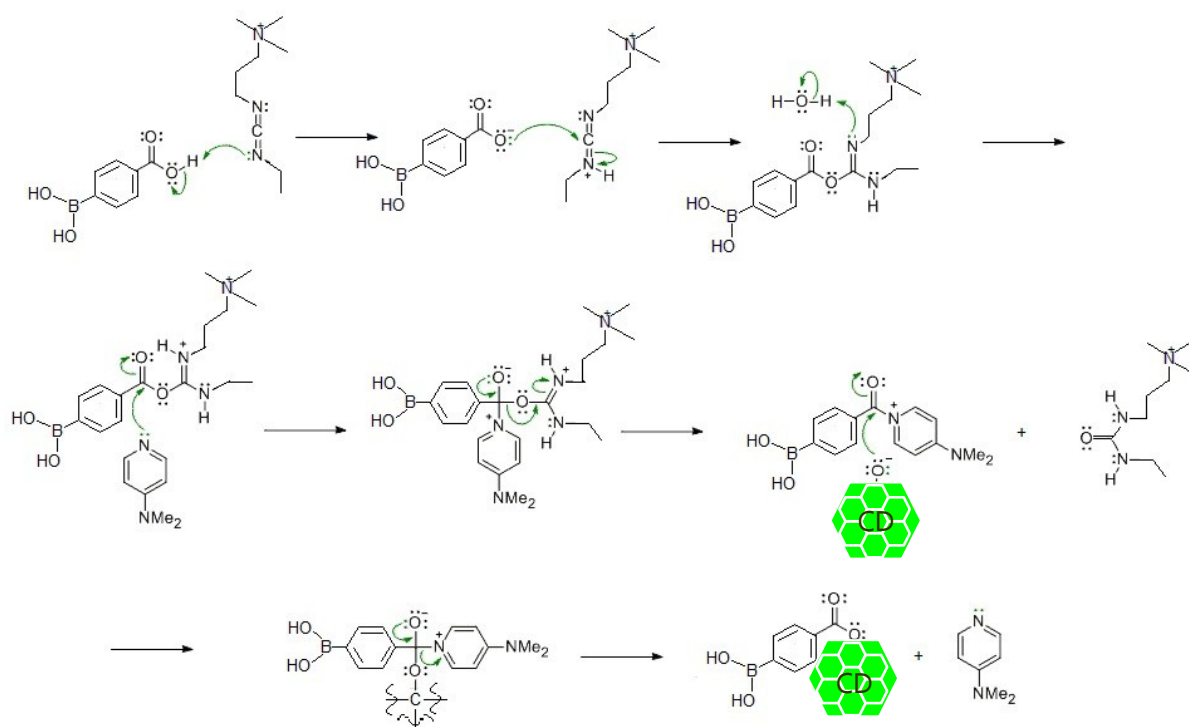


Figure S1. Reaction mechanism of conjugating CBBA onto CD through Stenglich Reaction.

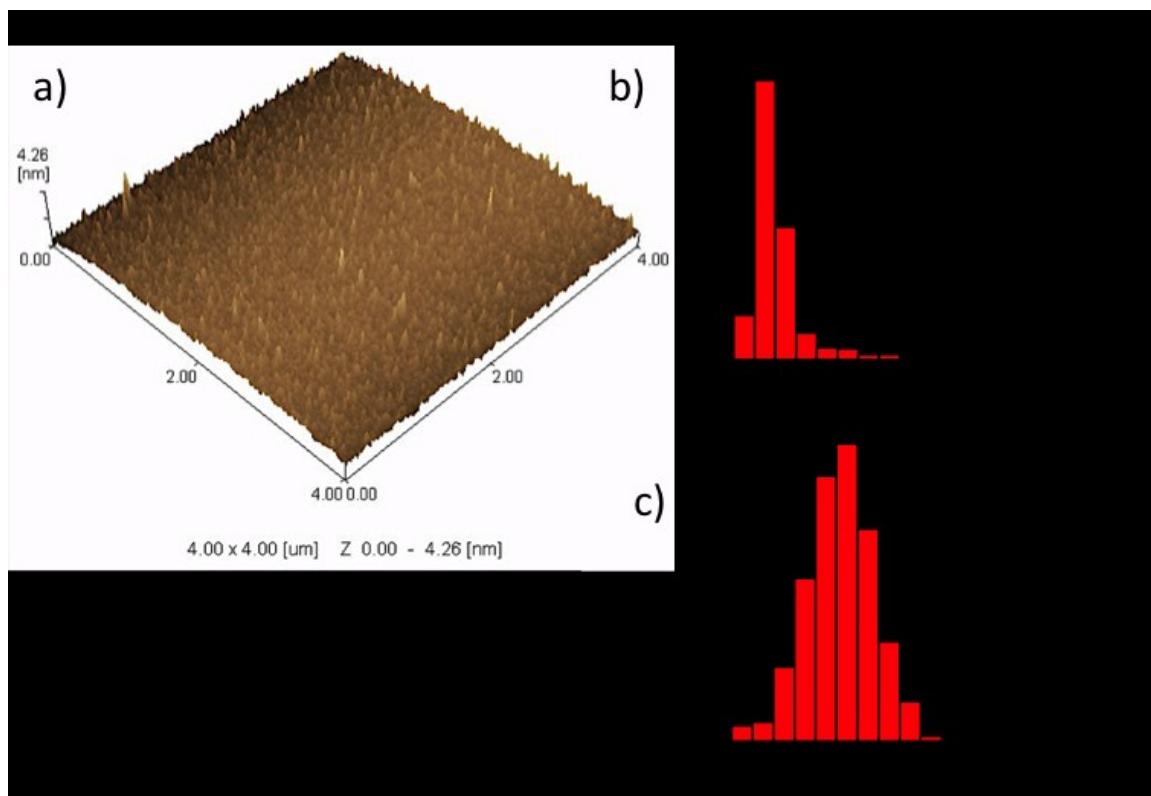


Figure S2. (a) AFM Image of CBBA-CD. Size histograms of CD (b) and CBBA-CD (c)

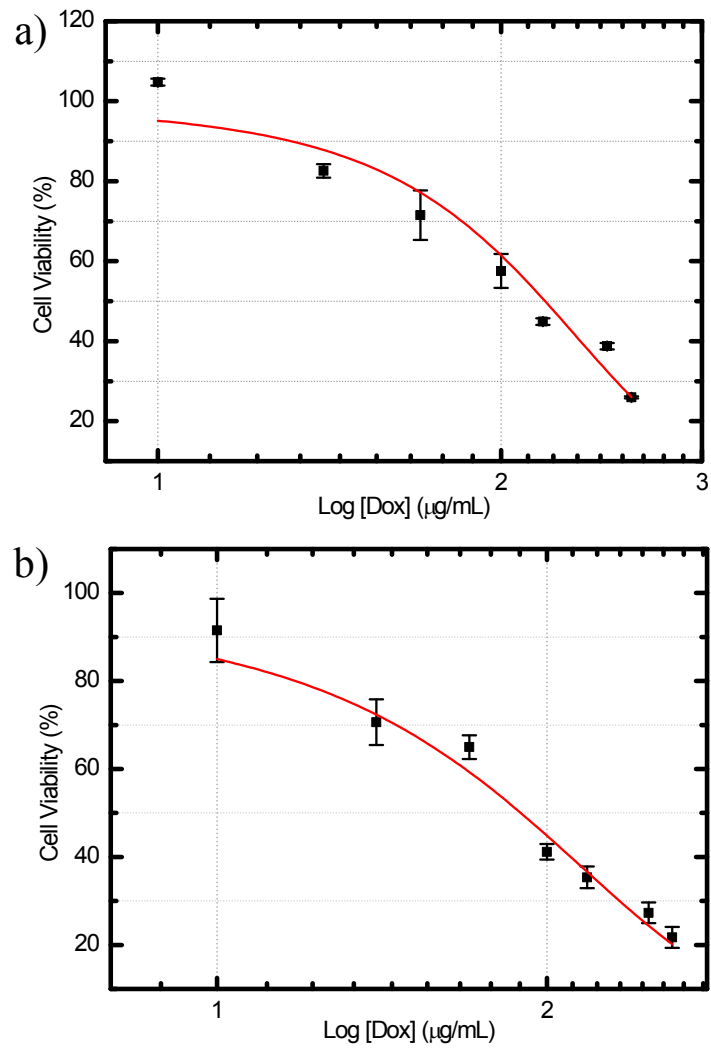


Figure S2. The dose–response graphs of HeLa cell after incubated with free Dox (a) and DCCM (b) after 24 h incubation with. IC₅₀ values can be determined on red fitted curve.