

Two-Stage Mass Spectrometry Approach for the Analysis of Triterpenoid Glycosides in *Fagonia indica*

Nayab Kanwal ^a, Amna Jabbar Siddiqui ^a, Faraz-Ul-Haq ^a, Hesham R. El-Seedi ^b, Syed Ghulam Musharraf ^{a,*}

^a H.E.J. Research Institute of Chemistry, International Center for Chemical and Biological Sciences, University of Karachi, Karachi-75270, Pakistan.

^b Department of Medicinal Chemistry, Uppsala University, Biomedical Centre, Box 574, SE-75 123, Uppsala, Sweden.

*Corresponding author. Tel.: +92 213 4824924-5; 4819010; fax: + 92 213 4819018-9.

E-mail address: musharraf1977@yahoo.com

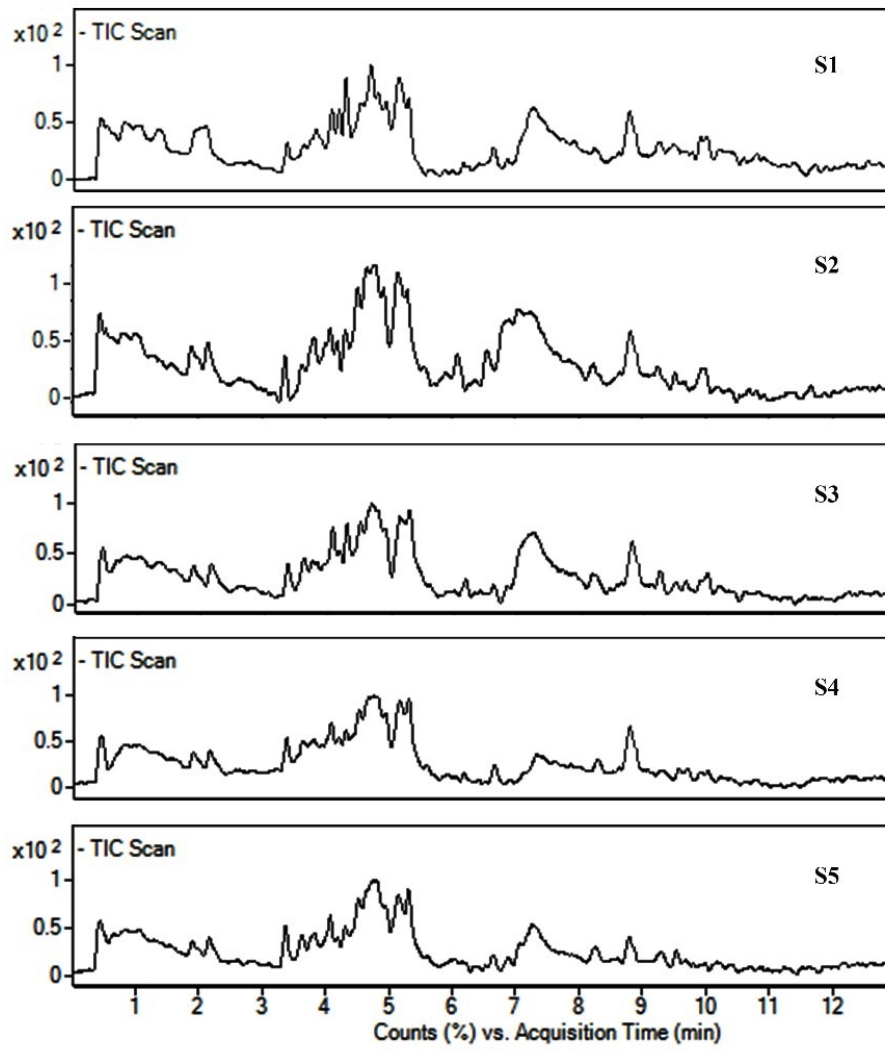


Figure S1: Comparison of TIC chromatograms of *F. indica* (S1-S5).

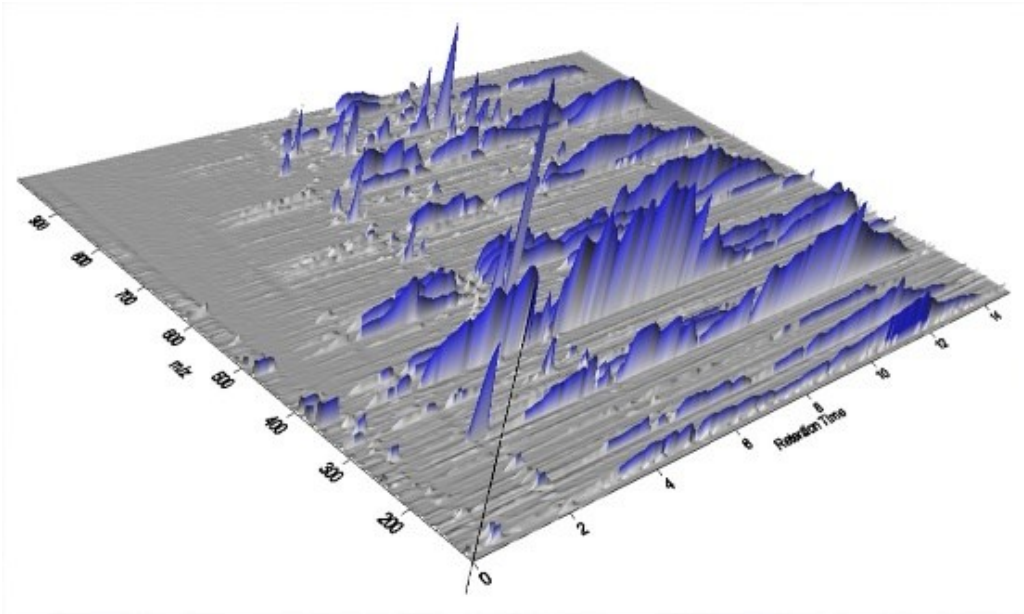


Figure S2: 3D Ion maps obtained in negative ionization mode of *Fagonia indica* sample.

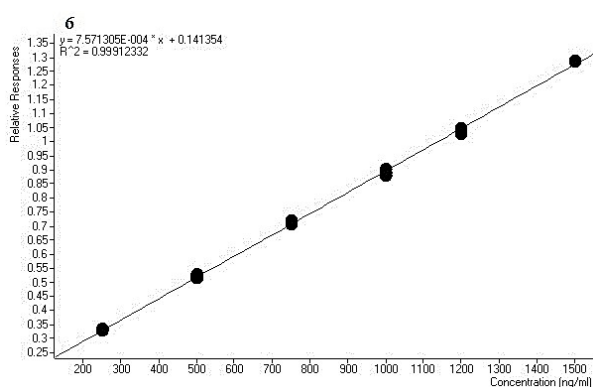
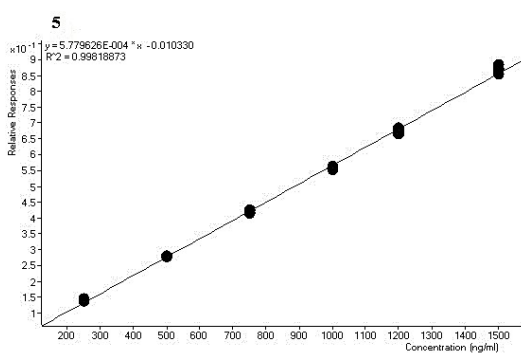
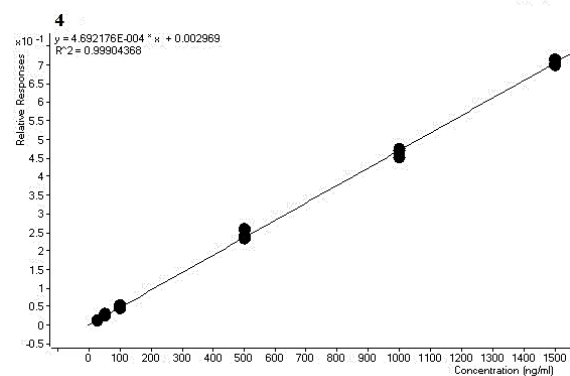
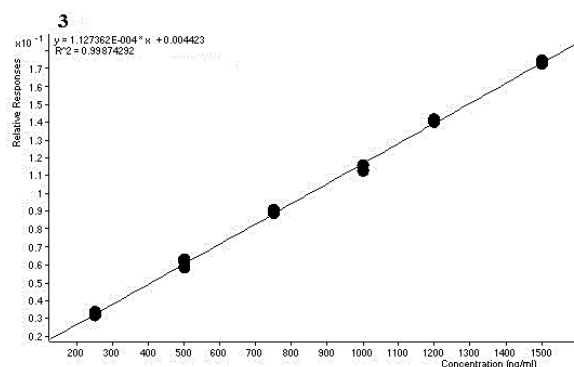
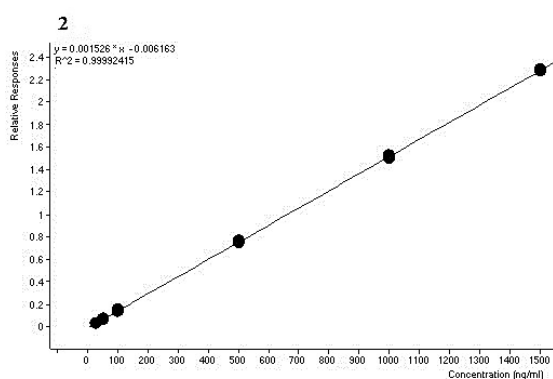
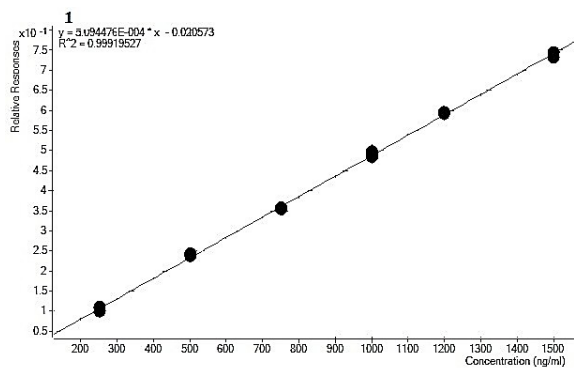


Figure S3. Calibration curve for saponins (1-6).

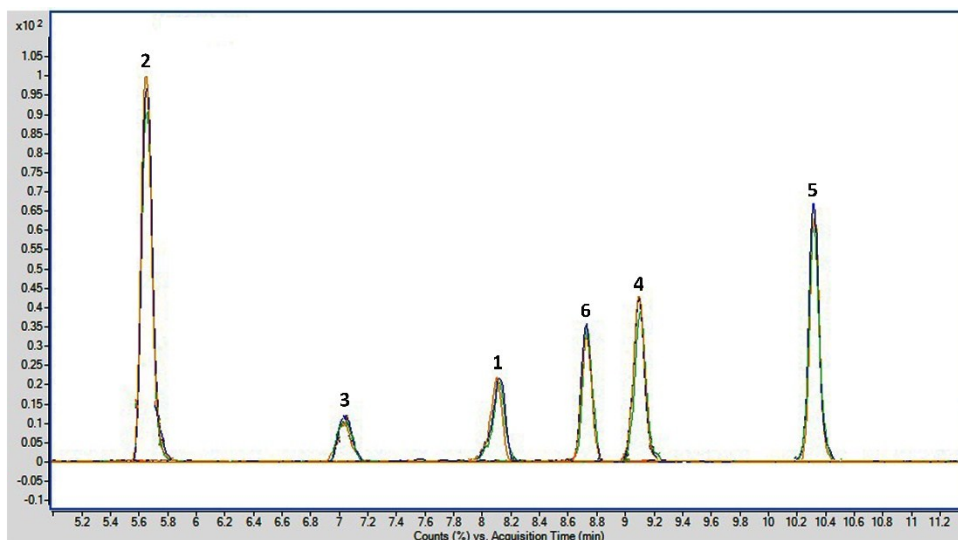


Figure. S4: Overlapping chromatograms depicting reproducibility of six saponins in triplicate analysis.

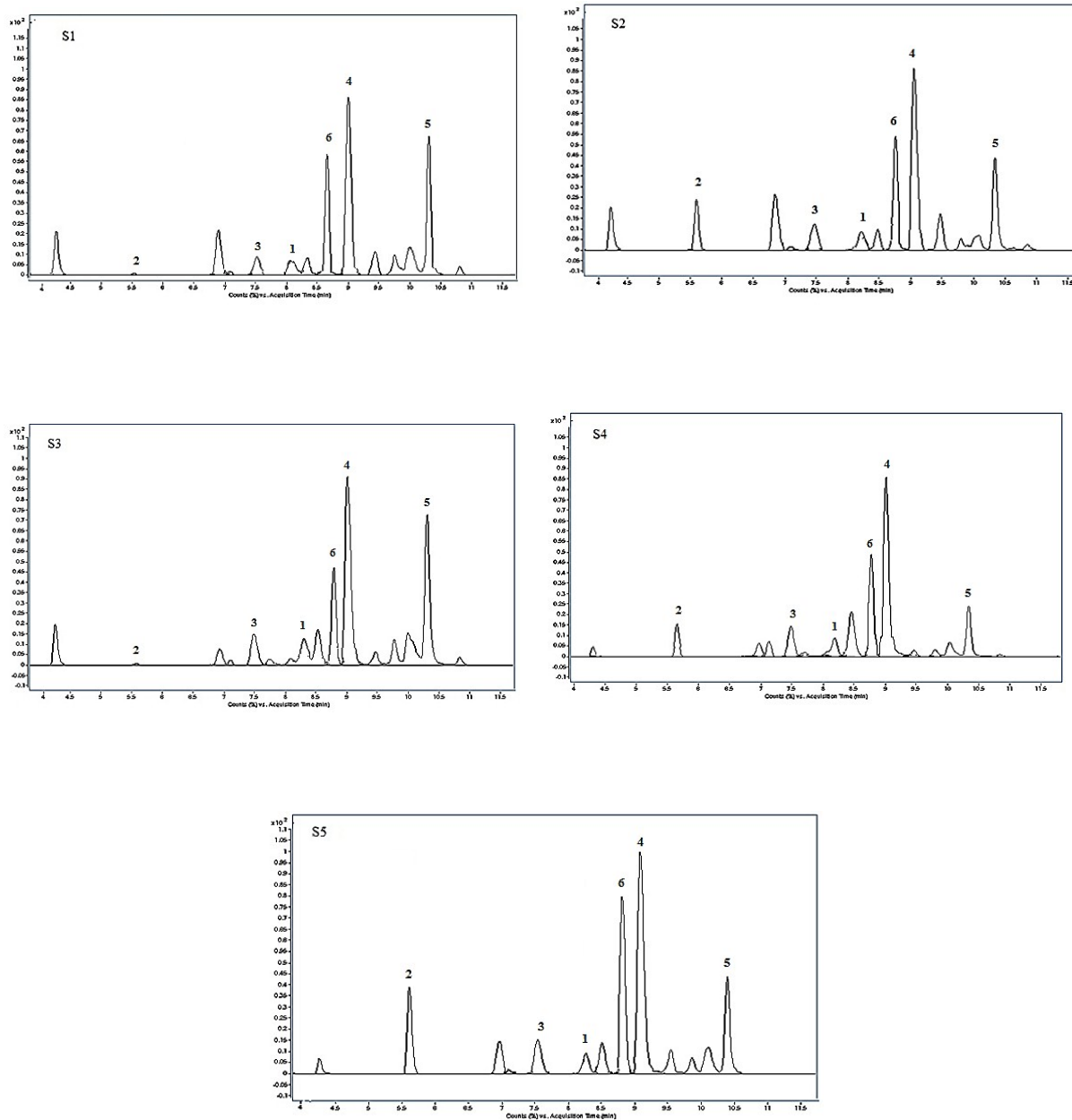


Figure S5. Total ion chromatograms of *F. indica* sample S1-S5.

Table S1. Intra-day and inter-day precisions (RSD %) of the proposed method in three concentration levels.

Name of compounds	Concentration (ng L ⁻¹)	Intra-day			Inter-day		
		Found (ng mL ⁻¹)	RSD (%)	Accuracy (%)	Found (ng mL ⁻¹)	RSD (%)	Accuracy (%)
1	450	454±5	1.18	99.07	453±9	1.94	99.11
	600	597±2	0.35	100.49	601±6	1.02	99.88
	900	911±5	0.56	98.72	891±1	0.14	100.98
2	150	153±2	1.65	97.93	150±3	2.17	99.77
	450	446.0±0.6	0.15	100.86	451±4	0.93	99.69
	600	596±4	0.62	100.63	599±5	0.86	100.17
	900	901±4	0.44	99.80	902±3	0.30	99.76
3	450	444±3	0.59	101.20	448±2	0.34	100.37
	600	598±1	0.24	100.25	612±8	1.29	97.97
	900	891.3±0.1	0.01	100.94	904±3	0.38	99.45
4	150	151.0±0.4	0.30	98.89	149±3	1.69	100.40
	450	444±3	0.66	101.28	453±3	0.65	99.16
	600	595±4	0.75	100.78	603±4	0.60	99.43
	900	902±3	0.37	99.71	898±4	0.40	100.11
5	450	450±3	0.64	99.89	449±1	0.30	100.26
	600	598±6	1.00	100.19	602±3	0.59	99.62
	900	894±4	0.47	100.63	905±1	0.14	99.41
6	450	451±2	0.47	99.61	451±3	0.64	99.62
	600	594±4	0.73	100.92	600±8	1.32	99.93
	900	896±3	0.32	100.39	905±4	0.39	99.41

Table S2. Results of recovery study performed at three spike levels shown in percentage.

Compound	Hyderabad			New sabzi mandi, Karachi			Korangi, Karachi			University of Karachi, Karachi			Super Highway, Karachi		
	SP1	SP2	SP3	SP1	SP2	SP3	SP1	SP2	SP3	SP1	SP2	SP3	SP1	SP2	SP3
1	102.8	95.7	94.1	103.2	97.0	97.1	103.9	101.5	97.7	94.3	103.5	96.7	90.0	104.4	107.7
2	101.2	90.9	93.2	102.3	95.8	96.9	94.9	96.7	95.4	110.8	109.4	91.0	109.9	103.7	104.1
3	103.8	91.7	92.5	97.6	101.4	97.8	105.5	92.0	88.6	114.2	109.7	107.4	108.4	108.9	107.9
4	93.5	89.4	86.8	108.9	100.6	93.3	94.7	105.3	94.8	108.8	92.8	104.5	105.9	103.3	106.9
5	90.9	94.2	92.5	102.9	102.0	101.6	106.5	116.9	90.1	108.6	90.1	107.0	91.7	102.5	103.2
6	89.2	94.6	92.9	95.0	95.5	102.1	105.6	107.2	89.1	89.7	92.3	98.2	107.4	103.2	104.5