

**Supplementary Information**

**for**

**Kinetic and mechanistic investigations of the degradation of propranolol in heat  
activated persulfate process**

Yu-qiong Gao<sup>\*a</sup>, Jia-nan Fang<sup>a</sup>, Nai-yun Gao<sup>b</sup>, Xue-nong Yi<sup>\*a</sup>, Wei Mao<sup>c</sup>, Jia Zhang<sup>a</sup>

<sup>a</sup>School of Environment and Architecture, University of Shanghai for Science and Technology,  
Shanghai 200093, China.

<sup>b</sup>College of Environmental Science and Engineering, Tongji University, Shanghai 200092, China

<sup>c</sup>Academy of Military Sciences PLA China, Beijing 100036, China

\*Corresponding authors Email address: [gaoyq@usst.edu.cn](mailto:gaoyq@usst.edu.cn) (Yu-qiong Gao);

[waterpurify\\_usst@outlook.com](mailto:waterpurify_usst@outlook.com) (Xue-nong Yi)

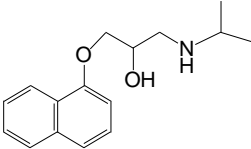
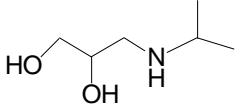
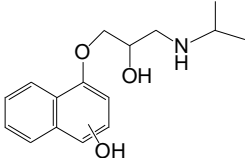
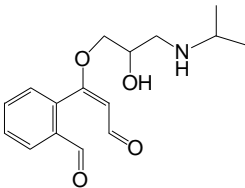
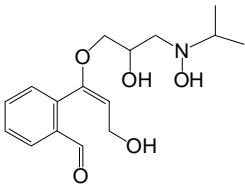
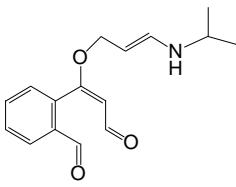
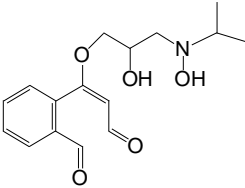
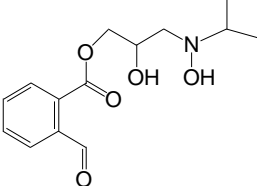
E-mail address:

Tel.: +86 21 55275979

**Table S1.** Main water quality characteristics of raw water

Samples	DOC (mg/L)	Cl <sup>-</sup> (mg/L)	HCO <sub>3</sub> <sup>-</sup> (mg/L)	pH	UV <sub>254</sub> (cm <sup>-1</sup> )
Yangtze River	3.216	68	131	7.95	0.117
Jinze Reservoir	4.296	57	119	8.00	0.077

**Table S2.** Degradation products and their possible structures identified by LC/MS/MS

Compounds	m/z	Tentative structure
PRO	260	
DP1	134	
DP2	276	
DP3	292	
DP4	310	
DP5	274	
DP6	308	
DP7	282	

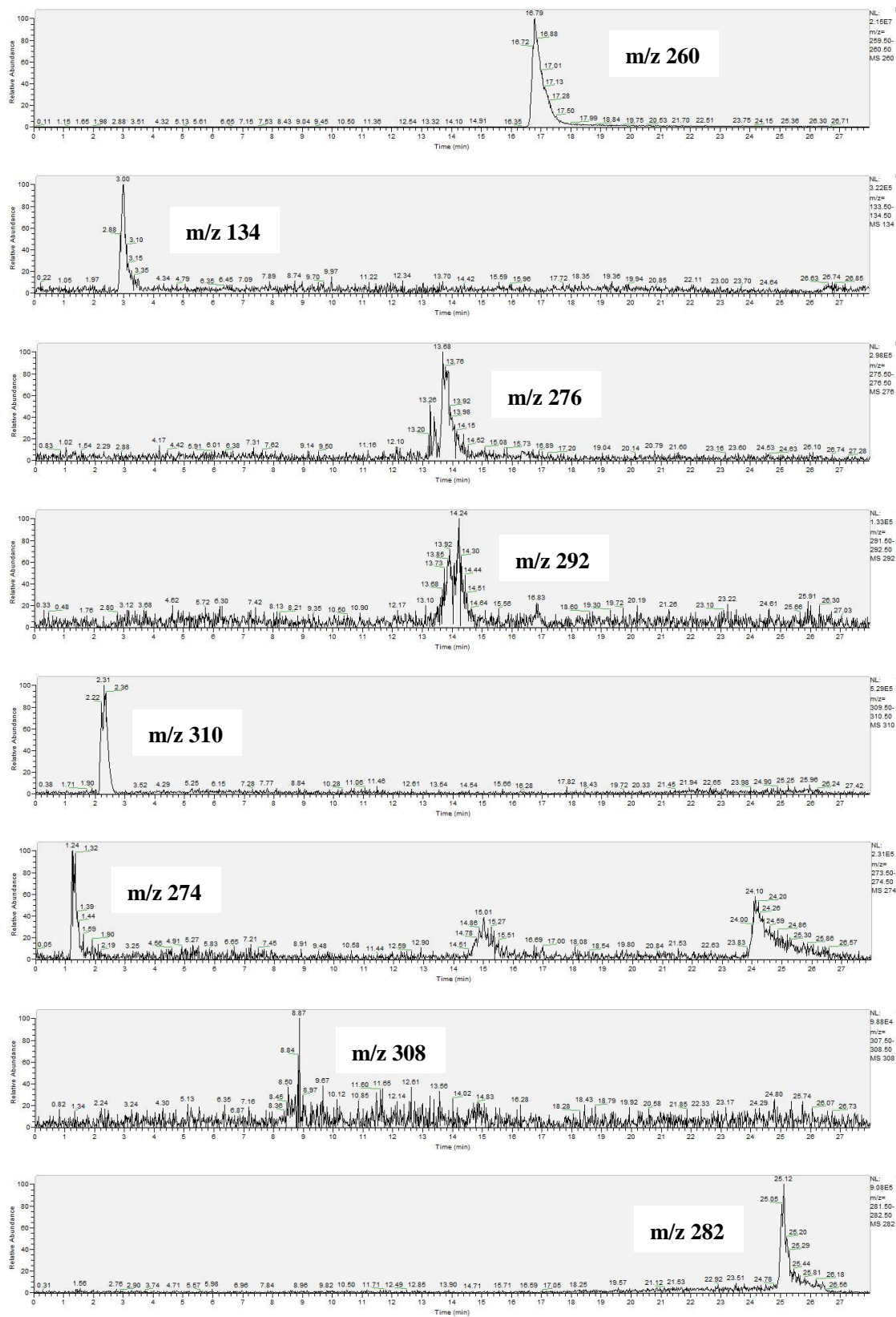


Fig. S1. LC/MS chromatogram of PRO and its degradation products.

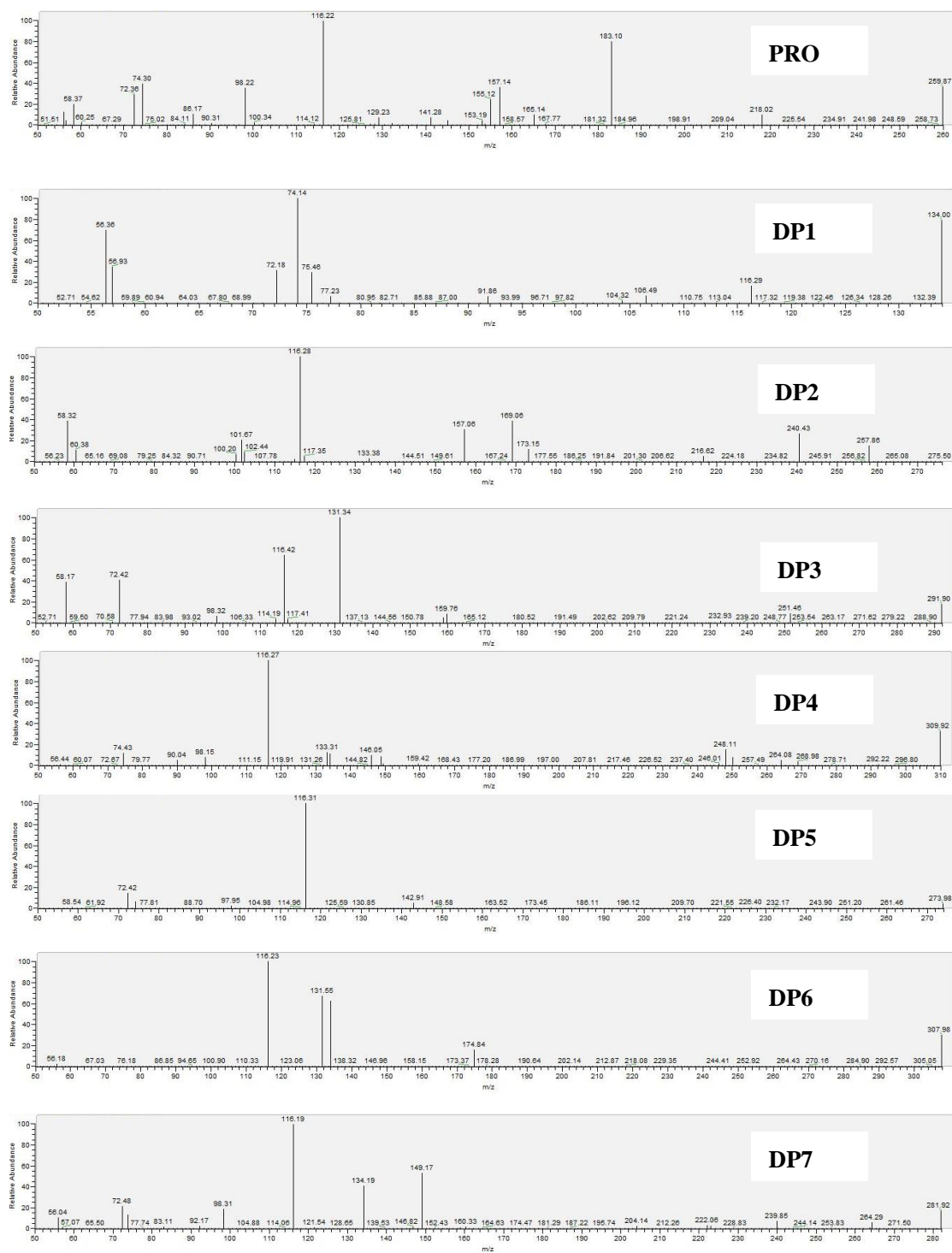


Fig. S2. MS/MS spectra of PRO and its degradation products.