

Supporting Information_1

Sequential ligand- and structure-based virtual screening approach for the identification of potential G protein-coupled estrogen receptor-1 (GPER-1) modulators

Shafi Ullah Khan^a, Nafees Ahemad^{a,b}, Lay-Hong Chuah^{a,c}, Rakesh Naidu^d, Thet Thet Htar^{a*}

^aSchool of Pharmacy, Monash University Malaysia, Jalan Lagoon Selatan, Bandar Sunway, 47500 Subang Jaya, Selangor, Malaysia

^bTropical Medicine and Biology Multidisciplinary Platform, Monash University Malaysia, Jalan Lagoon Selatan, Bandar Sunway, 47500 Subang Jaya, Selangor, Malaysia

^cAdvanced Engineering Platform, Monash University Malaysia, Jalan Lagoon Selatan, Bandar Sunway, 47500 Subang Jaya, Selangor, Malaysia

^dJeffrey Cheah School of Medicine and Health Sciences, Monash University Malaysia, Jalan Lagoon Selatan, Bandar Sunway, 47500 Subang Jaya, Selangor, Malaysia

*Corresponding author: thet.thet.htar@monash.edu (Thet Thet Htar)

List of Content

S1: Table of enrichment factor (EF) 0.5%, 1% and 2% and the area under ROC curves (AUC) of the 3D virtual screening protocols for the selection of query model

S2: ¹H NMR Spectra of Compounds SK0

S3: ¹³C NMR Spectra of Compounds SK0

S4: ¹H NMR Spectra of Compounds SK0P

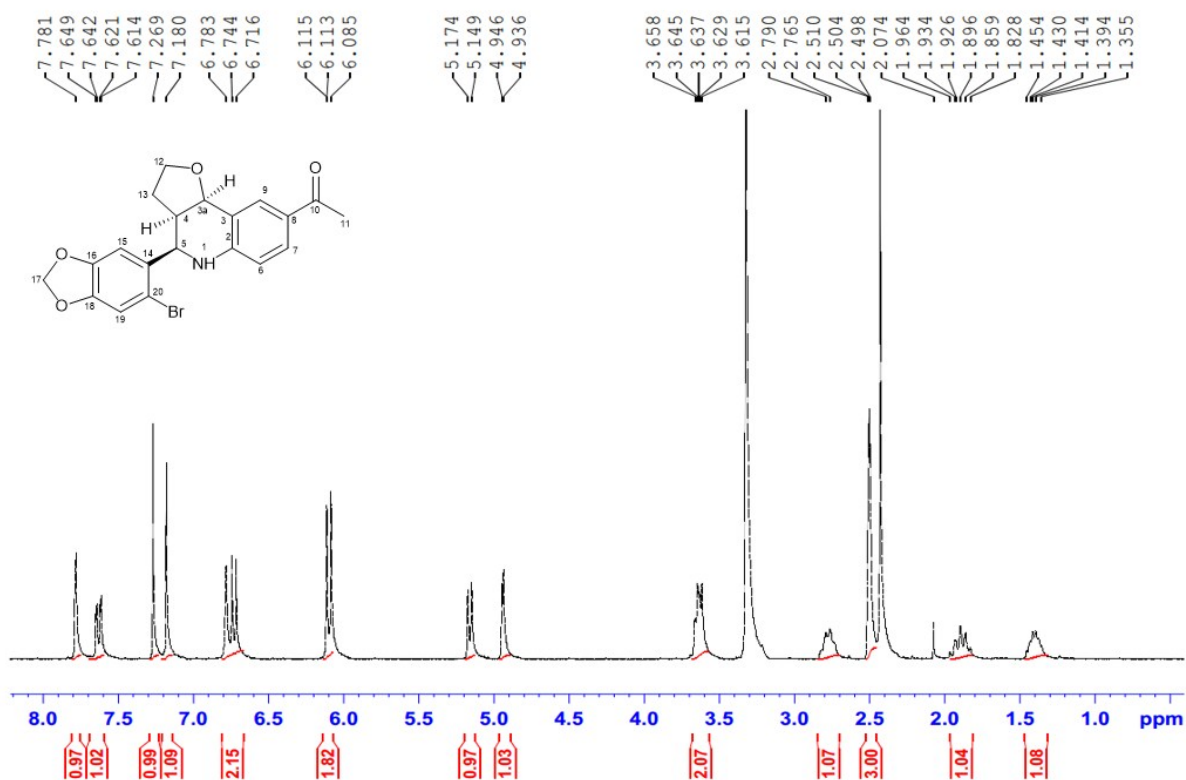
S5: ¹³C NMR Spectra of Compounds SK0P

S1: Table 1. The enrichment factor (EF) 0.5%, 1% and 2% and the area under ROC curves (AUC) of the 3D virtual screening protocols for the selection of query model

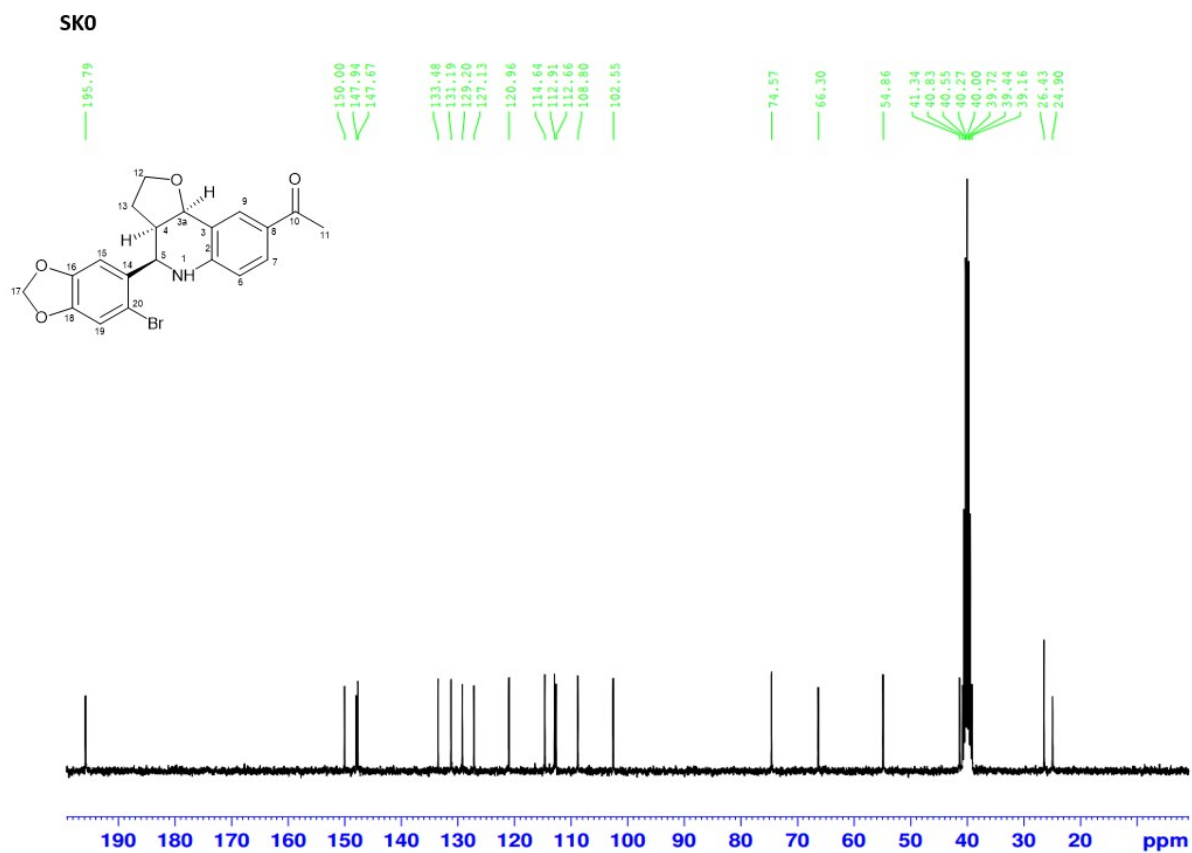
Statistical Matrices	G1_conformer#1	G1_conformer#2	G1_conformer#3	G1_conformer#4
ROCS_TanimotoColour				
AUC	0.754	0.749	0.746	0.732
0.5% Enrichment	42.6	43.1	43.6	43.6
1.0% Enrichment	21.3	21.6	21.9	21.8
2.0% Enrichment	10.7	10.8	12.3	11.3
ROCS_ShapeTanimoto				
AUC	0.767	0.7311	0.731	0.757
0.5% Enrichment	52.2	52.7	42.6	44.4
1.0% Enrichment	28.4	28.0	22.5	25.3
2.0% Enrichment	16.3	14.1	14.4	18.1
ROC_TanimotoCombo				
AUC	0.797	0.766	0.777	0.798
0.5% Enrichment	56.1	58.9	48.5	49.9
1.0% Enrichment	28.2	29.6	28.3	29.9
2.0% Enrichment	15.6	16.5	17.0	17.3
Electrostatics Potential Similarity Virtual Screening				
AUC		0.649		
0.5% Enrichment		35.7		
1.0% Enrichment		21.4		
2.0% Enrichment		10.7		
Structure Based Virtual Screening Using Homology Model of GPER-1and Diverse Dataset of Active and Decoy GPER-1				
AUC		0.546		
0.5% Enrichment		10.0		
1.0% Enrichment		6.7		
2.0% Enrichment		3.3		
Structure Based Virtual Screening Using Homology Model of GPER-1 and selective Dataset of Active and Decoy GPER-1				
AUC		0.660		
0.5% Enrichment		14.0		
1.0% Enrichment		7.6		
2.0% Enrichment		5.6		

S2: ¹H NMR Spectra of Compound SK0

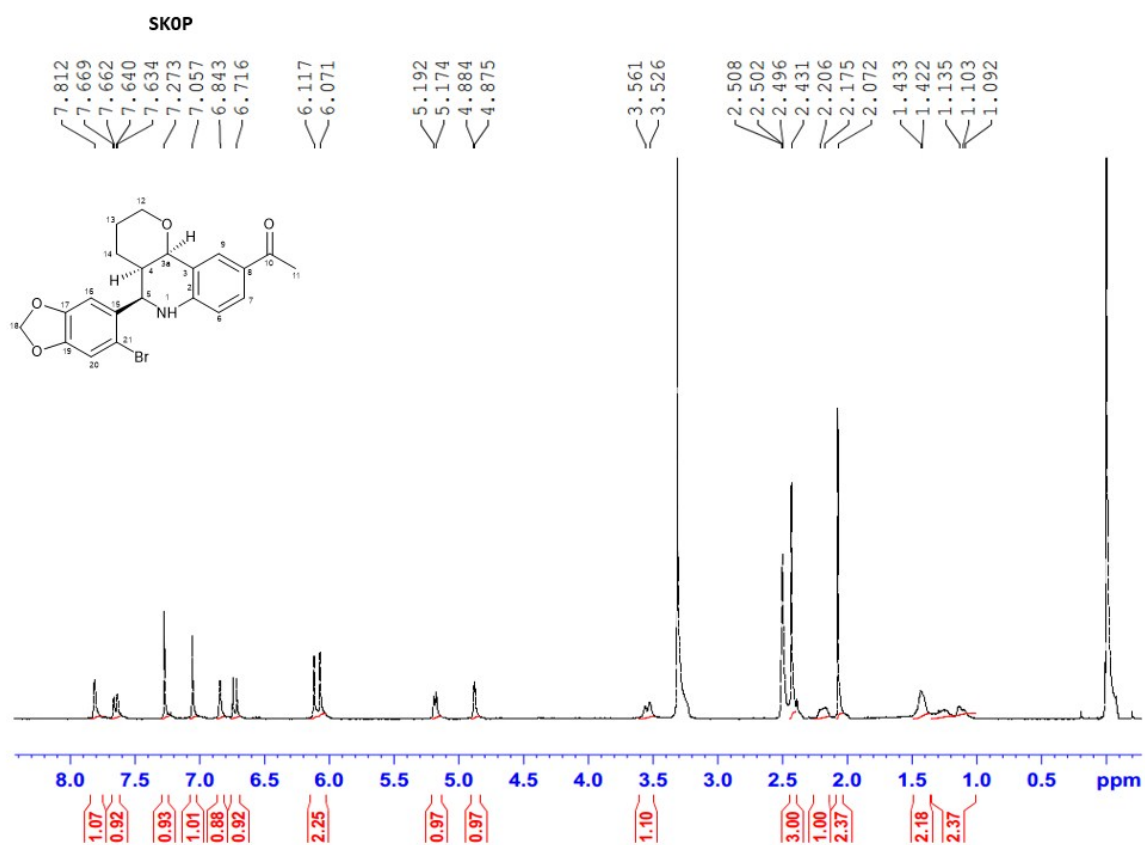
SK0



S3: ^{13}C NMR Spectra of Compound SK0



S4: ¹H NMR Spectra of Compound SK0P



S5: ^{13}C NMR Spectra of Compound SK0P

SK0P

