

**Adsorption and anion exchange insight of indigo carmine onto CuAl-LDH/SWCNTs
nanocomposite: kinetic, thermodynamic and isotherm analysis**

Noha Almoisheer,^a F.A. Alseroury,^{a,b} Rajeev Kumar,^c M. Aslam,^d M.A.

Barakat^{c,e*}

^aDepartment of Physics, Faculty of Science, King Abdulaziz University, KSA

^bDepartment of Physics, Faculty of Science, University of Jeddah, KSA

^cDepartment of Environmental Sciences, Faculty of Meteorology, Environment
and Arid Land Agriculture, King Abdulaziz University, Jeddah, 21589, KSA

^dCenter of Excellence in Environmental Studies, King Abdulaziz University, KSA

^eCentral Metallurgical R & D Institute, Helwan 11421, Cairo, Egypt

*Corresponding Author's Email: mabarakat@gmail.com

Phone: +96626400000, ex. 64821

Fax : +96626952364

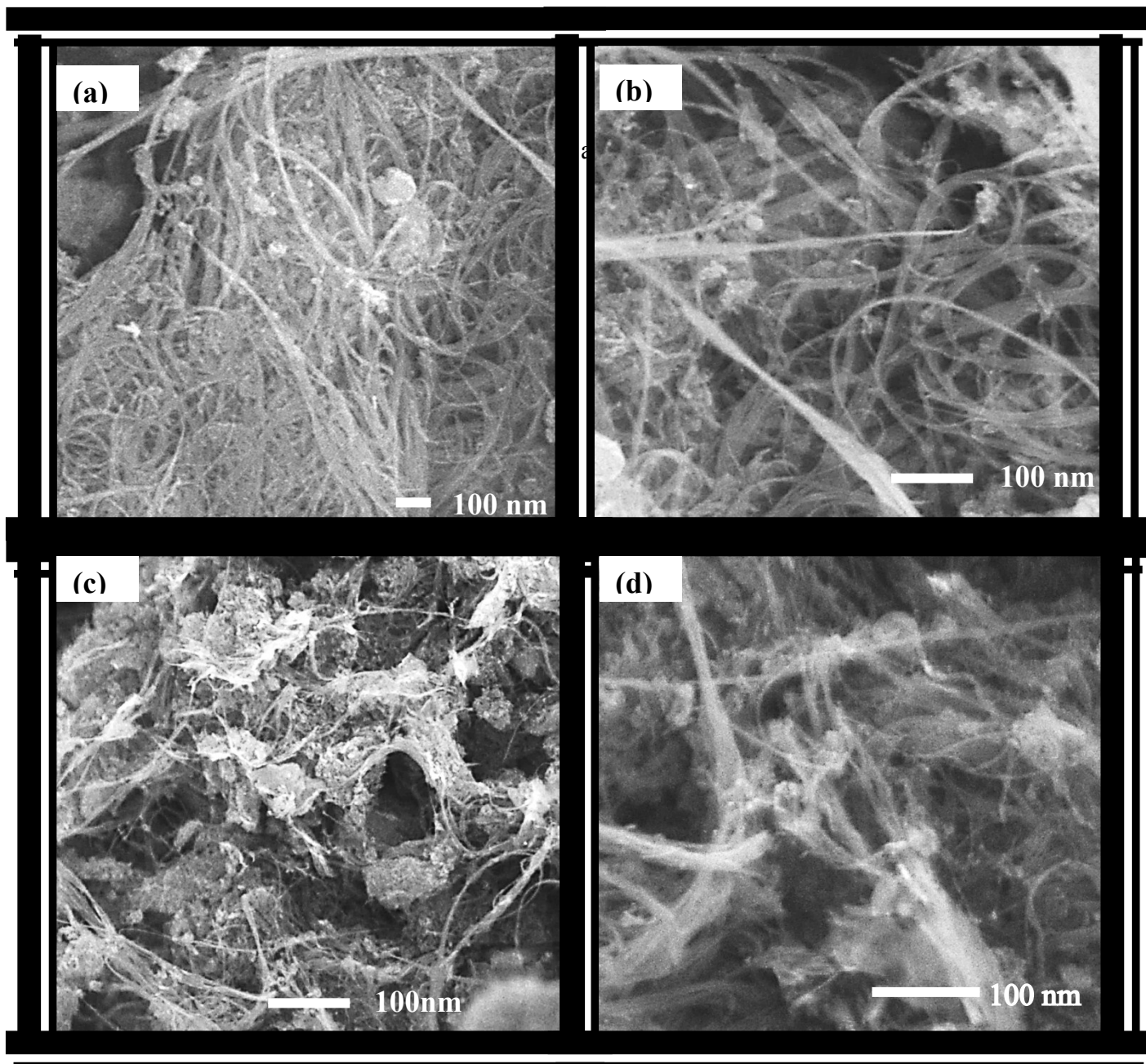


Fig. S1. SEM Images of (a,b SWCNTS) and (c, d) CuAl-LDH/SWCNTs nanocomposite

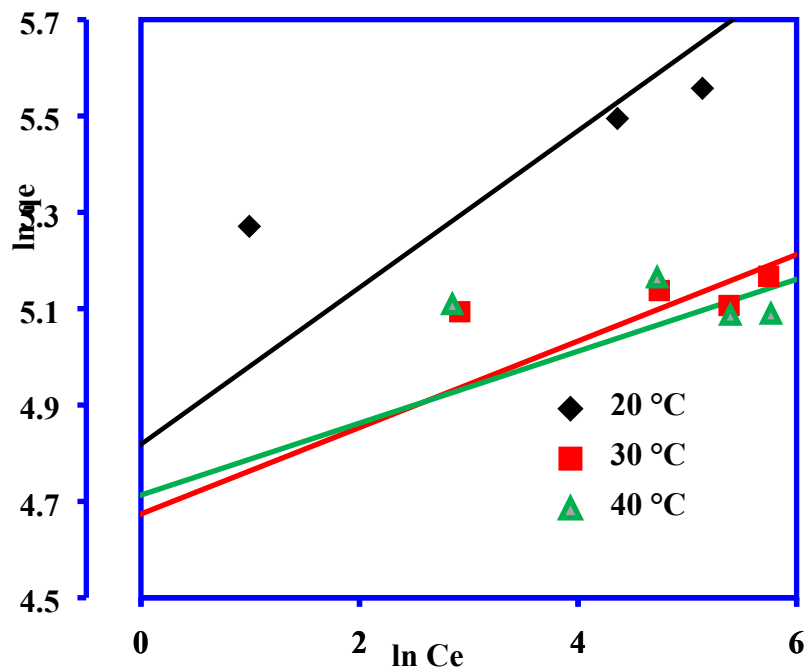


Fig. S2. Freundlich isotherm plot for adsorption of IC onto CuAl-DLH/SWCNTs nanocomposite

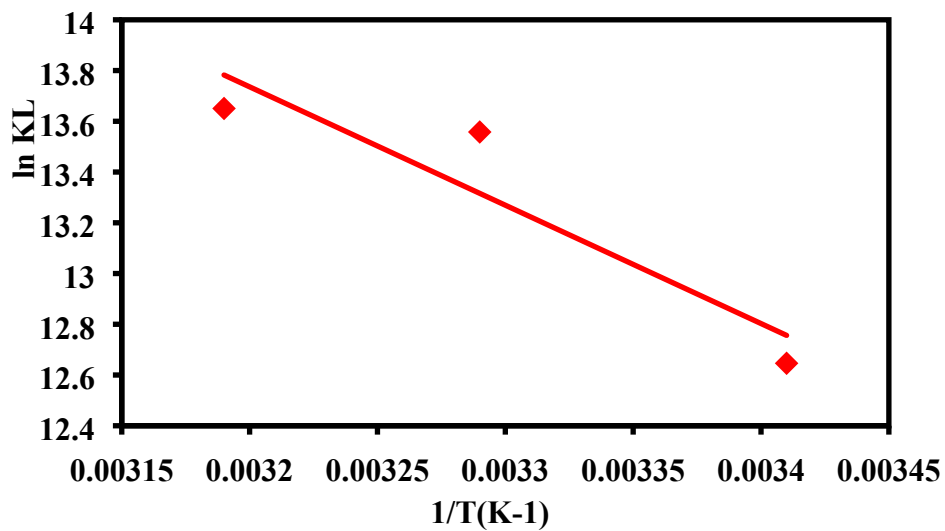


Fig. S3. Van't Hoff plot for the adsorption of IC onto CuAl-DLH/SWCNTs nanocomposite

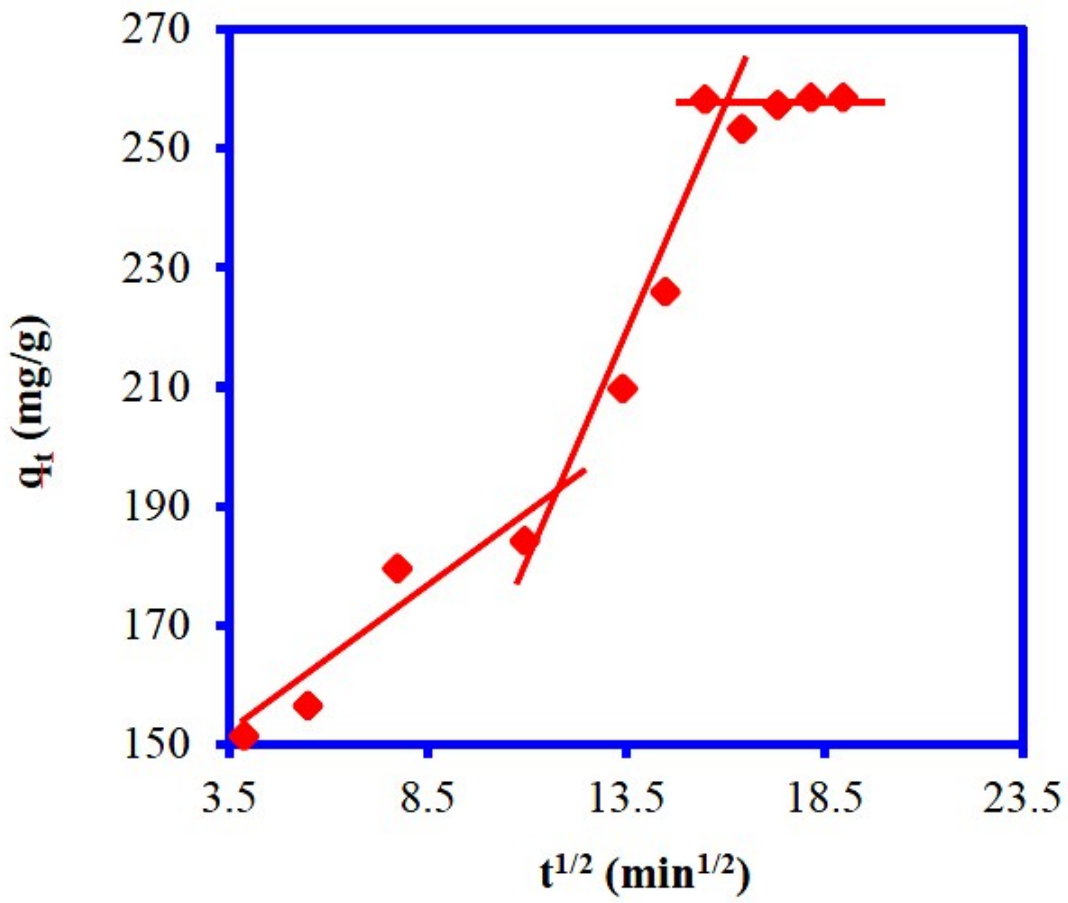


Fig. S4. Weber-Morris intraparticle diffusion for IC adsorption on to CuAl-DLH/SWCNTs nanocomposite