

Table 1: Calculated surface area, single pore volume and pore radius for all the as-synthesized samples.

| Sample | Single point S/A | Single Pore volume (cc/g) | Pore diameter(\AA) |
|----------------------------------------|--------------------------------|---------------------------------|-------------------------------|
| $\beta\text{-In}_2\text{S}_3$ | 52.1775 m^2/g | 0.125958 cm^3/g | 101.939 \AA |
| Co-doped $\beta\text{-In}_2\text{S}_3$ | 102.1553 m^2/g | 0.266258 cm^3/g | 95.507 \AA |

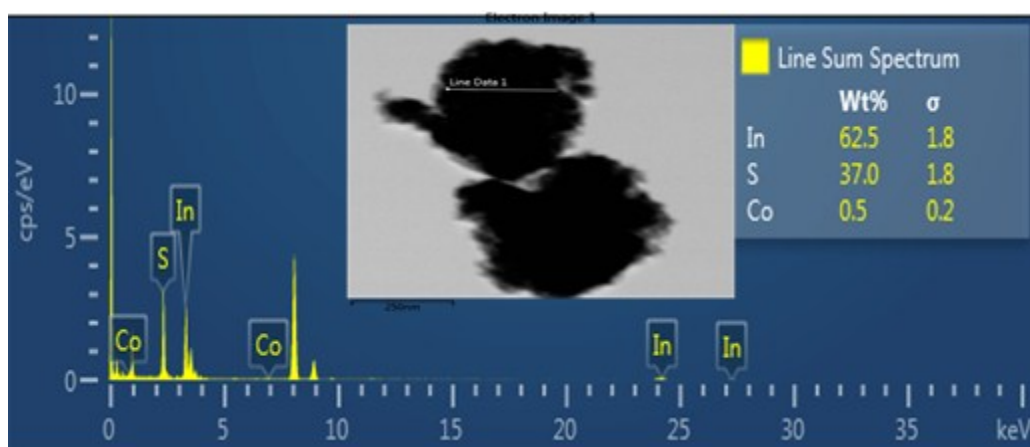


Figure S1: Line scan of a Co-doped $\beta\text{-In}_2\text{S}_3$ indicating cobalt presence in the doped sample.