

Supplementary Materials

Lipids as Integral Components in Mussel Adhesion

Yunhong He ^{a,b}, Chengjun Sun ^{b,c,*}, Fenghua Jiang ^b, Bo Yang ^d, Jingxi Li ^b, Chao
Zhong ^e, Li Zheng ^b and Haibing Ding ^{a,f,*}

^a *Key Laboratory of Marine Chemistry Theory and Technology, Ministry of Education, Ocean University of China, Qingdao, China.*

^b *Key Laboratory of Marine Bioactive Substances and Analytical Technology, the First Institute of Oceanography, State Oceanic Administration (SOA), Qingdao, China.*

^c *Laboratory for Marine Drugs and Bioproducts, Qingdao National Laboratory for Marine Science and Technology, Qingdao, China.*

^d *Qingdao No. 2 Middle School, Qingdao, China.*

^e *School of Physical Science and Technology, Shanghai Tech University, Shanghai, China.*

^f *Laboratory for Marine Ecology and Environmental Science, Qingdao National Laboratory of Marine Science and Technology, Qingdao, China.*

* Corresponding authors:

E-mail address: csun@fio.org.cn (C. Sun); dinghb@ouc.edu.cn (H. Ding).

Tel.: +86-532-88963310; Fax: +86-532-88963253.

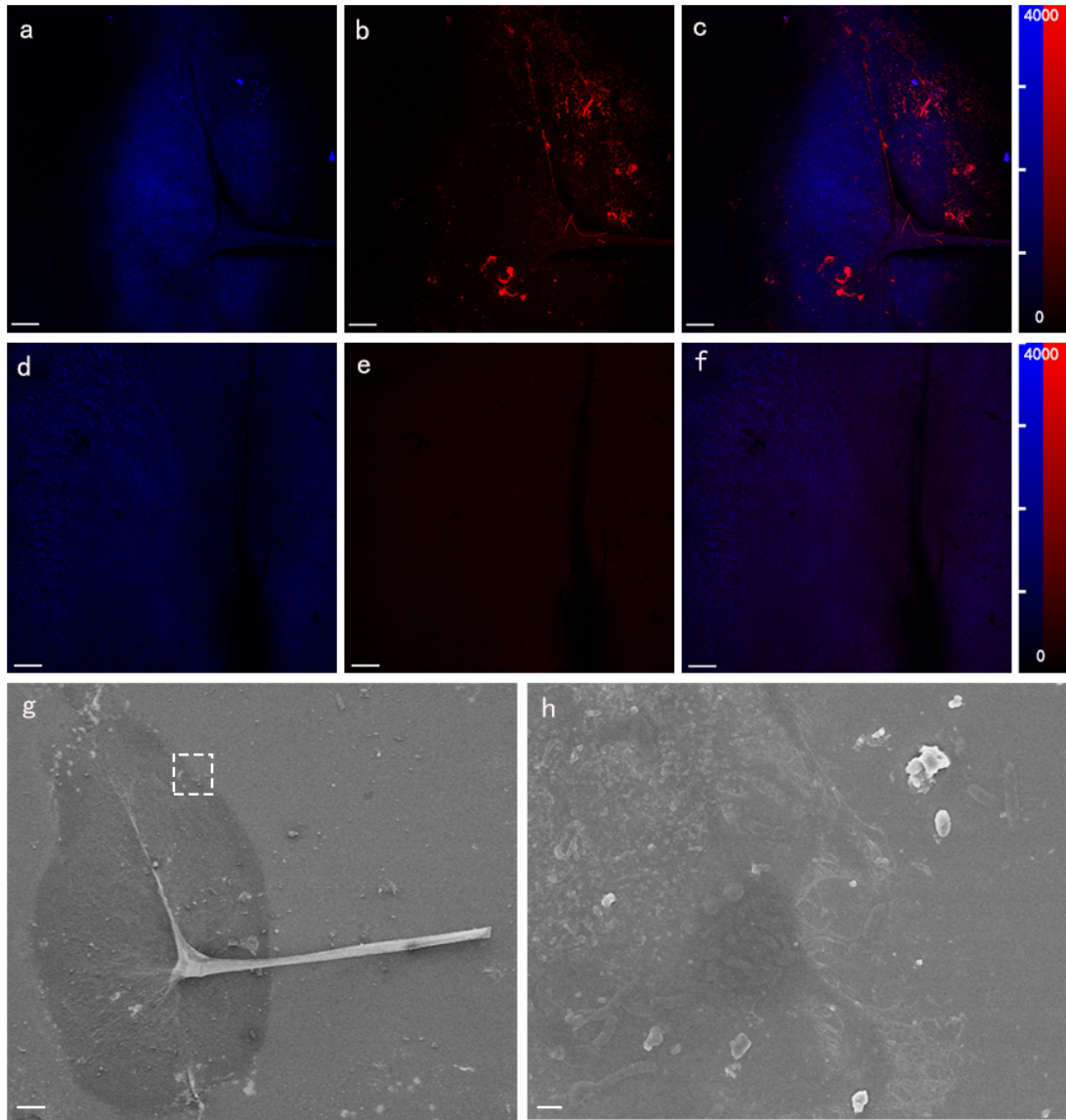


Fig. S1. Hoechst and FM1-43FX staining and SEM imaging of a plaque. a: Hoechst staining; b: FM1-43FX staining; c: overlaying of Hoechst and FM1-43FX staining; d: e, f: control. Scale bar: 100 μm ; g: SEM imaging of a plaque, scale bar: 100 μm ; h: SEM image of a plaque, scale bar: 1 μm .

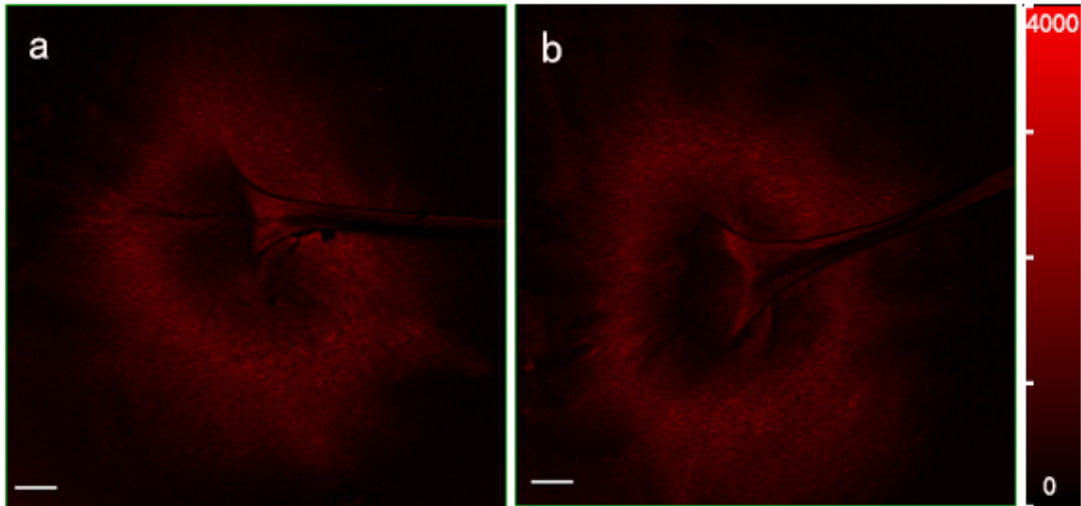


Fig. S2. CLSM images of ORO staining of plaque. a: plaque; b: control. Scale bar: 100 μm .

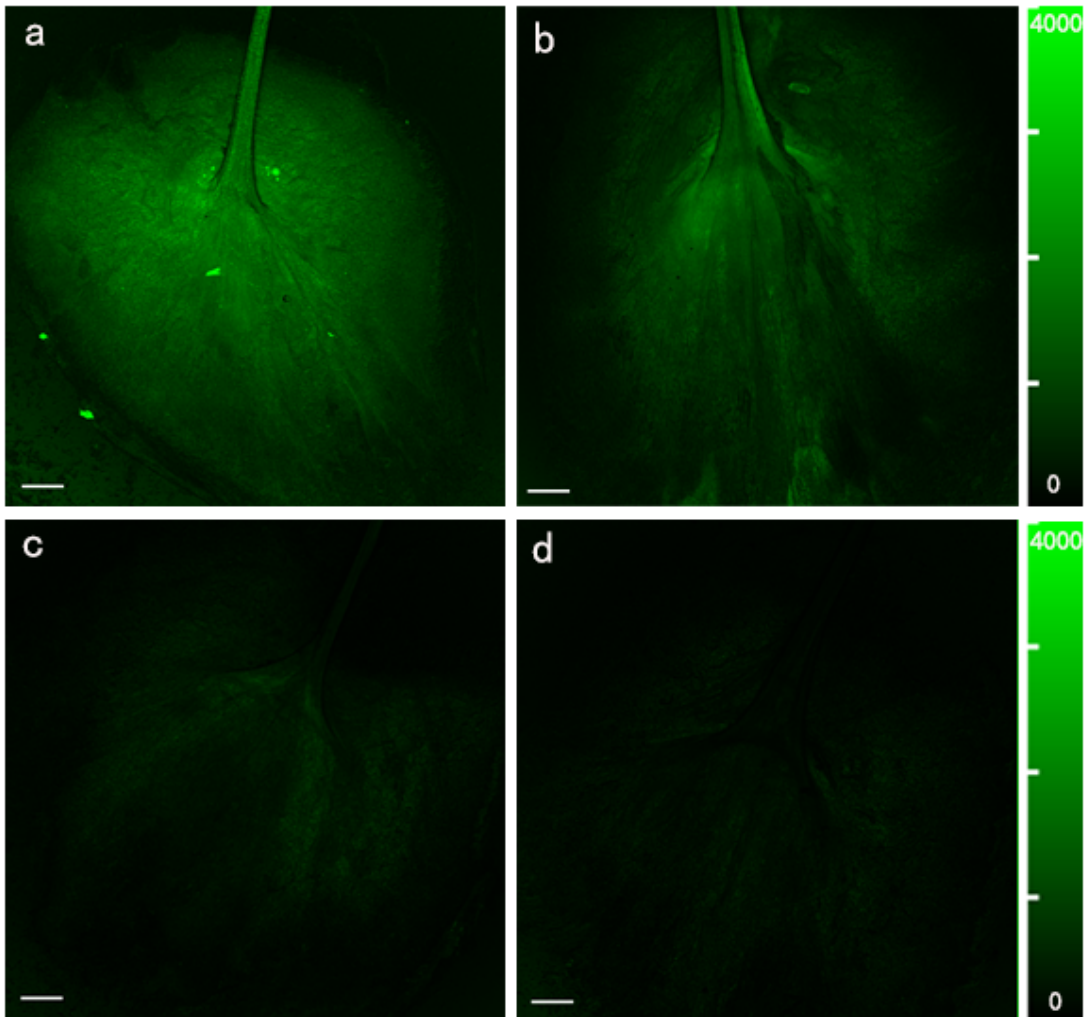


Fig. S3. CLSM images of Fluoresceinamine staining of a byssal thread. a: fresh thread; b: one-week-old thread; c, d: control. Scale bar: 10 μm .

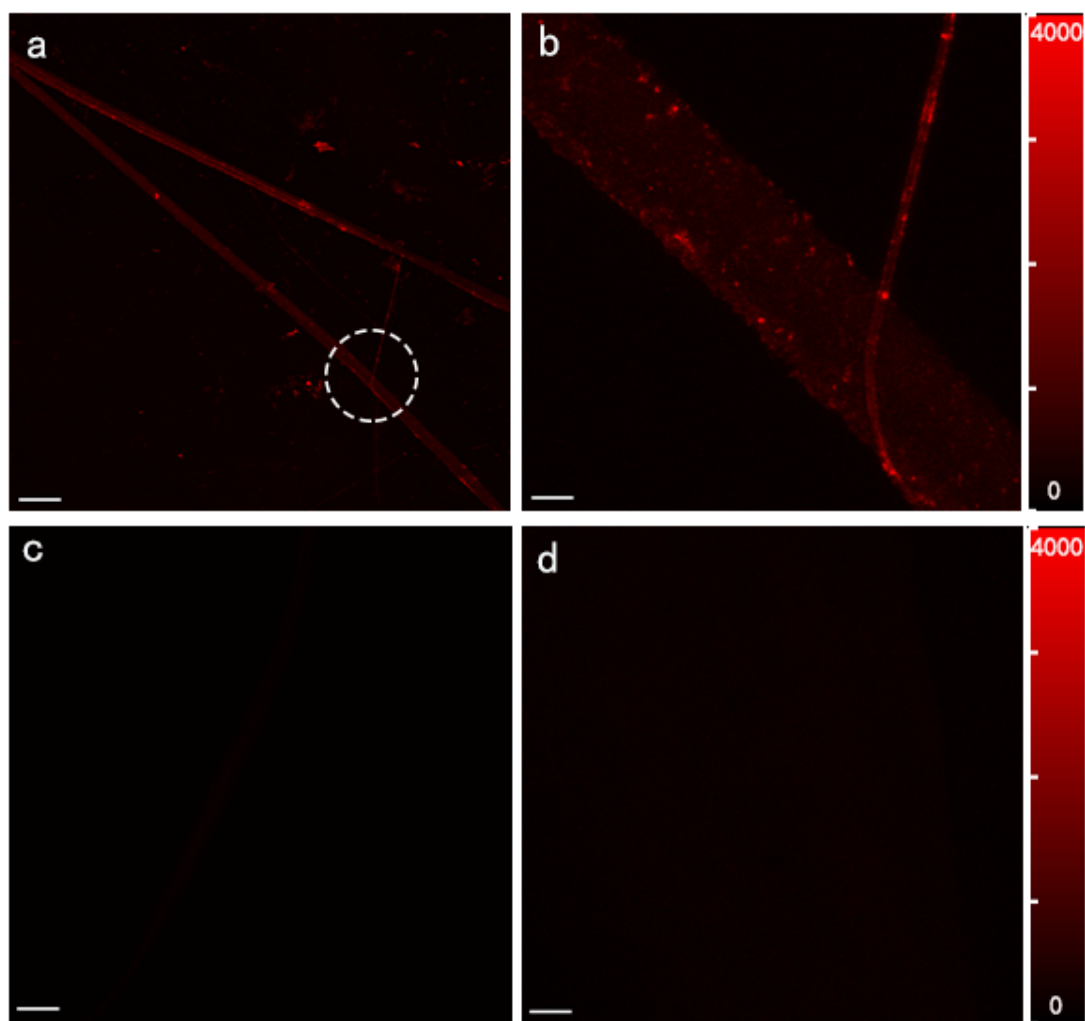


Fig. S4. CLSM images of FM1-43FX staining of a normal byssal thread. a, c: scale bar 100 μm ; b, d: scale bar 10 μm ; a, b: FM1-43FX staining; c, d: control.

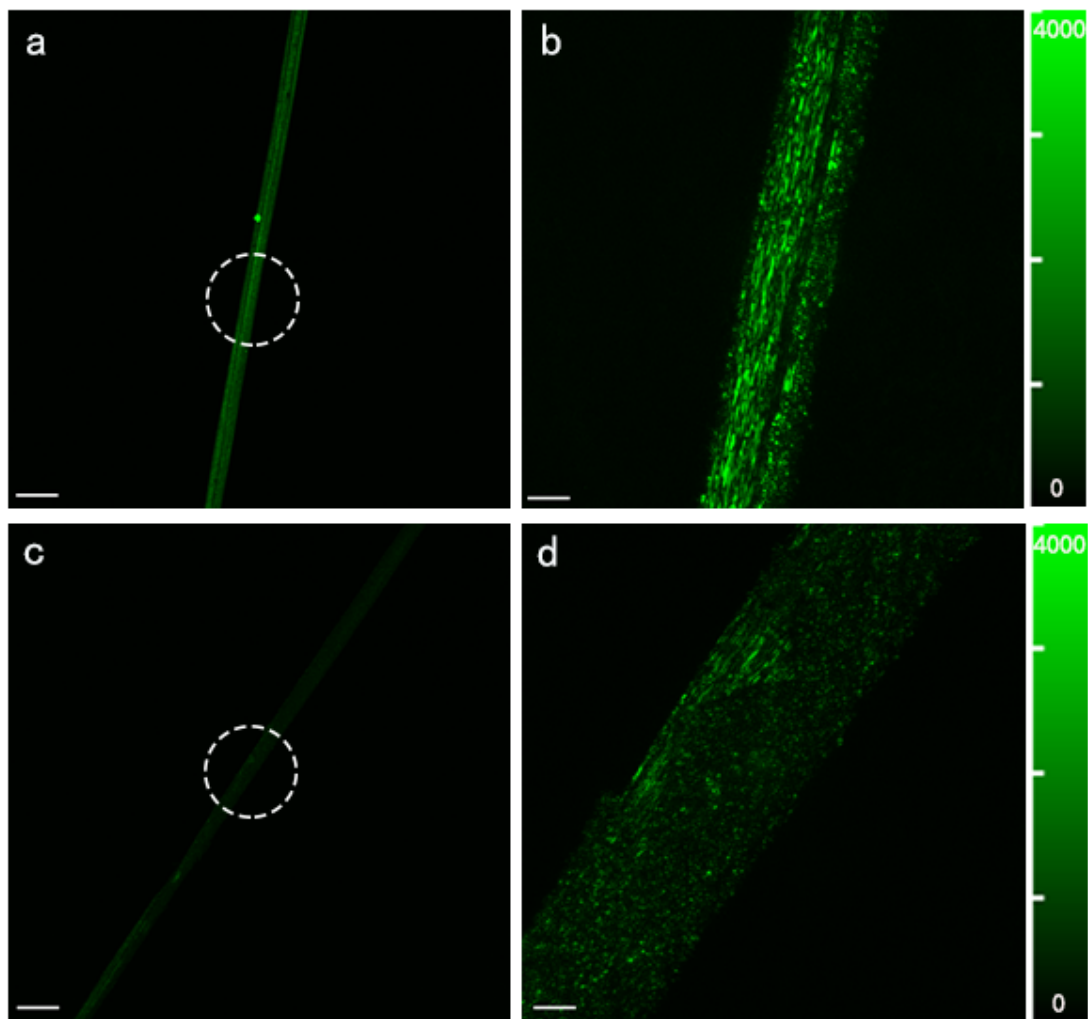


Fig. S5. CLSM images of Fluoresceinamine staining of a byssal thread. a, c: scale bar 100 μm ; b, d: scale bar 10 μm ; c, d: control.

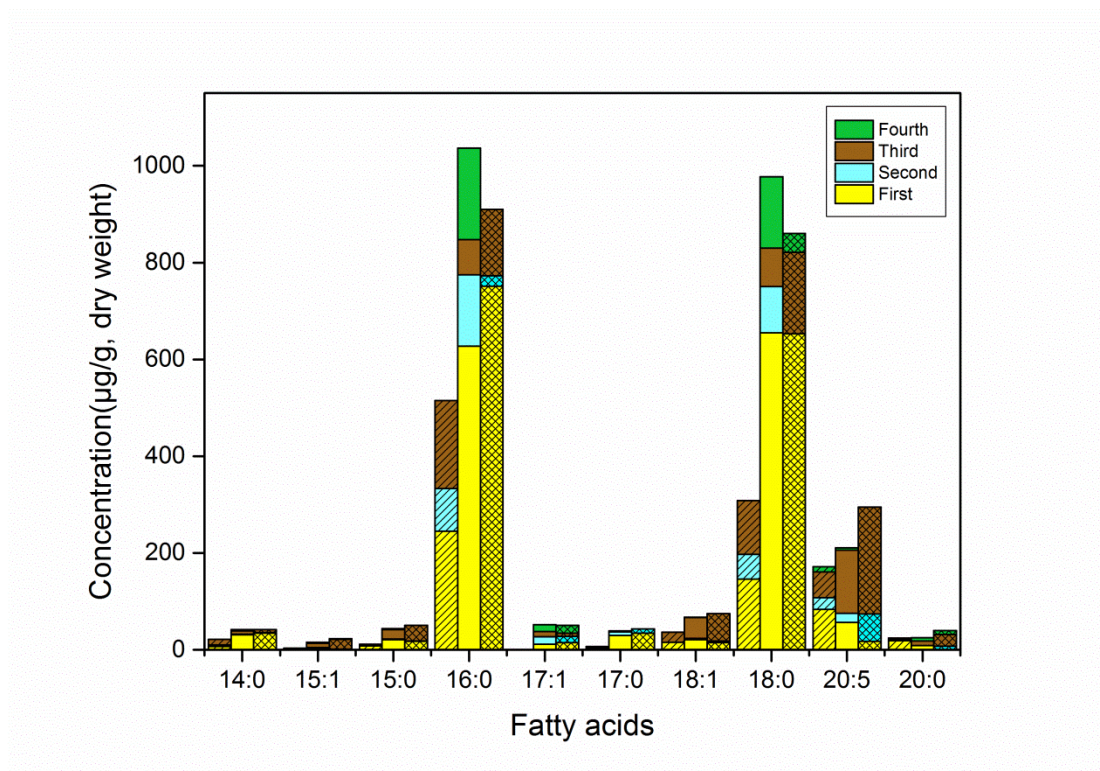


Fig. S6. Fatty acids compositions in different kinds of mussels. *Mytilus galloprovincialis* (slash pattern, first in each group); *Mytilus coruscus* (solid pattern, second in each group); *Mytilus californianus* (grid pattern, third in each group).