

Electronic Supplementary Information

Influence of surfactants of different nature and chain length on the morphology, thermal stability and sheet resistance of graphene

Ana M. Díez-Pascual,^{*a} Cristina Vallés,^b Rocío Mateos,^a Soledad Vera-López,^a Ian A. Kinloch,^b and María Paz San Andrés^a

^aAnalytical Chemistry, Physical Chemistry and Chemical Engineering Department, Faculty of Biology, Environmental Sciences and Chemistry, Alcalá University, E-28871 Alcalá de Henares, Madrid, Spain.

^bNational Graphene Institute and School of Materials, University of Manchester, Oxford Road, Manchester M13 9PL, UK

*Corresponding author. am.diez@uah.es (A. M. Díez-Pascual)

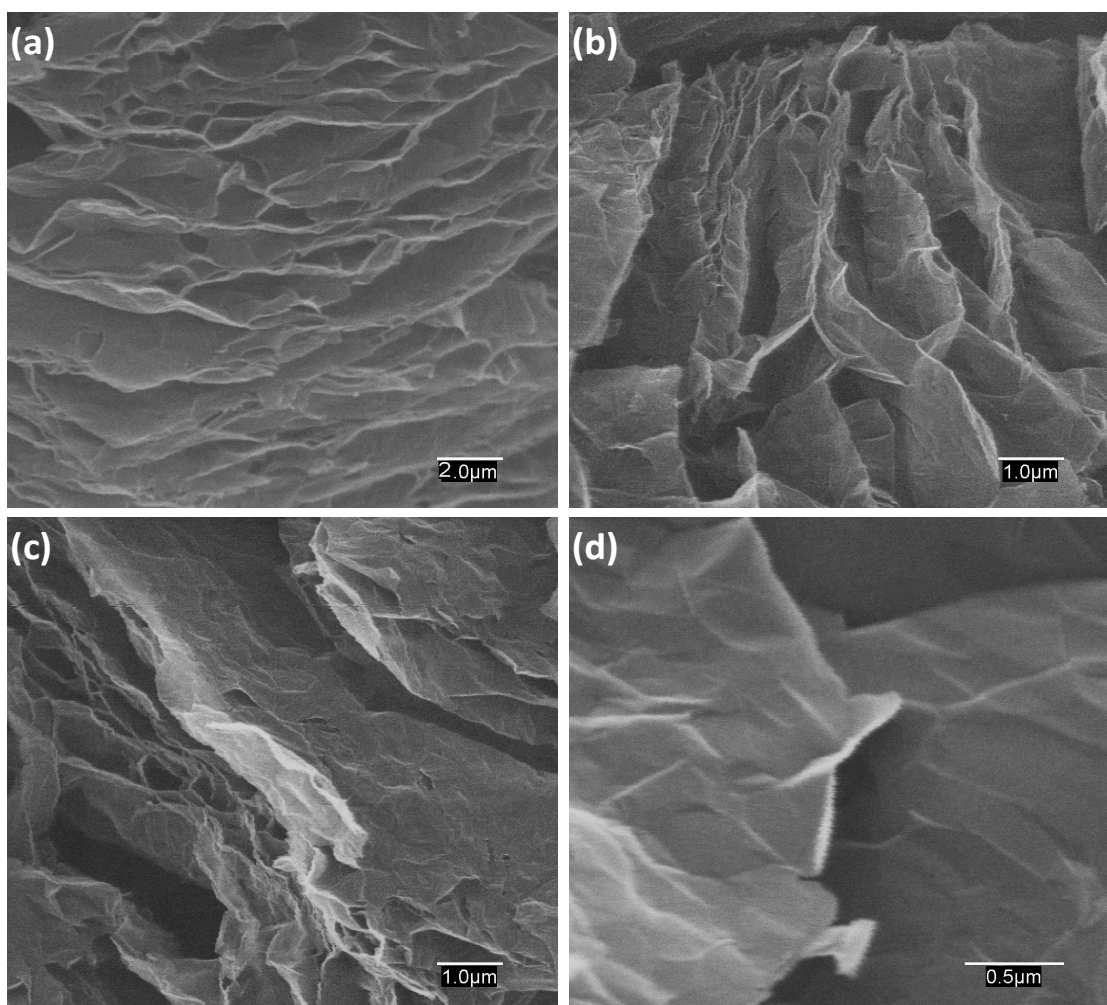


Fig. S1. SEM images of raw G at different magnifications.

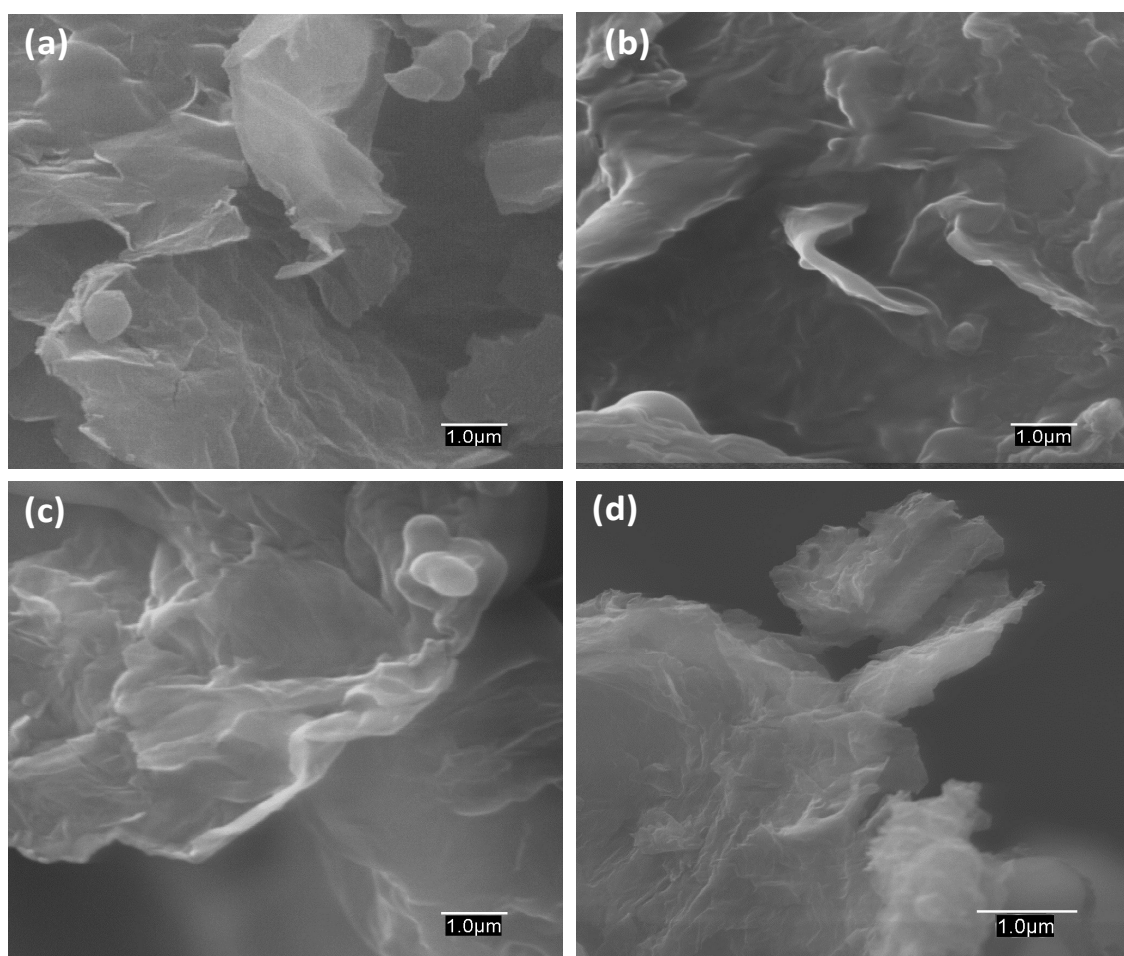


Fig. S2. SEM images of G (1.0 wt%) dispersions in 20 mM SDS (a), 30 mM DTAB (b), 20 mM CTAB (c) and 10 mM Brij L23 (d).

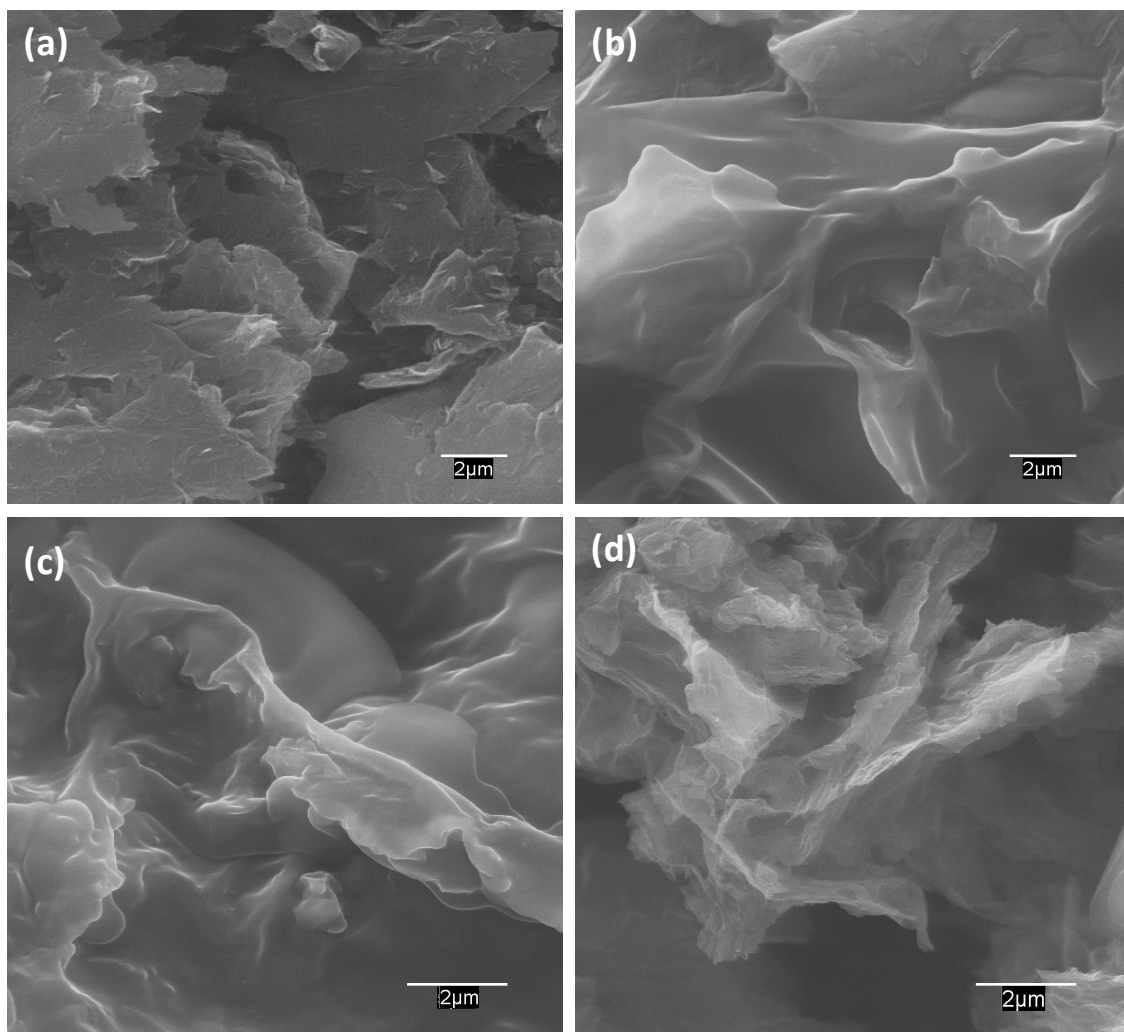


Fig. S3. SEM images of G (0.5 wt%) dispersions in 20 mM SDS (a), 30 mM DTAB (b), 20 mM CTAB (c) and 10 mM Brij L23 (d).