

Supporting Information

Bioconcentration of organic dyes via fungal hyphae and their derived carbon fibers for supercapacitors

Jia Lei ^{a,b}, Qi Guo ^b, Weitang Yao ^b, Tao Duan ^{a,b}, Ping Chen ^{c,*} and Wenkun Zhu ^{a,b,*}

a. Sichuan Civil-military Integration Institute, Southwest University of Science and Technology, Mianyang, Sichuan, 621010, P. R. China.

b. Sichuan New Energy Materials Civil-military Integration Innovation Center, Southwest University of Science and Technology, Mianyang, Sichuan, 621010, P. R. China

c. School of Chemistry and Chemical Engineering, Anhui University, Hefei, Anhui, P. R. China.

*corresponding author: zhuwenkun@swust.edu.cn, chenping@ahu.edu.cn.

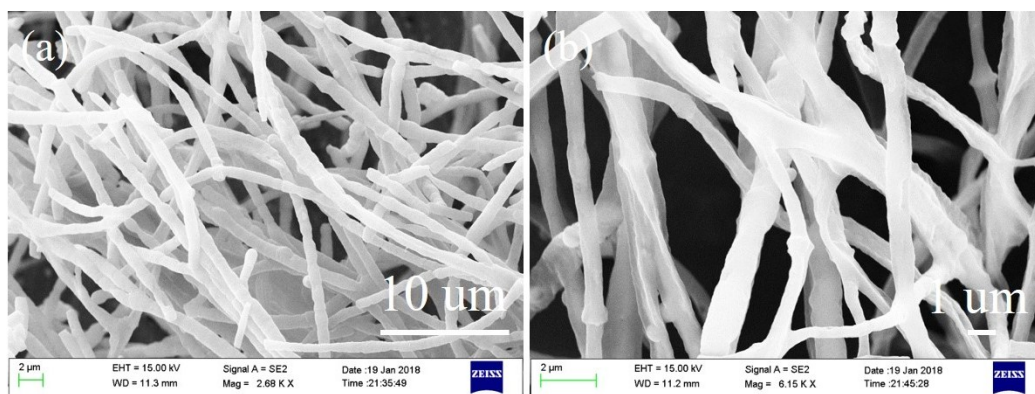


Fig. S1. SEM images of FHCF.

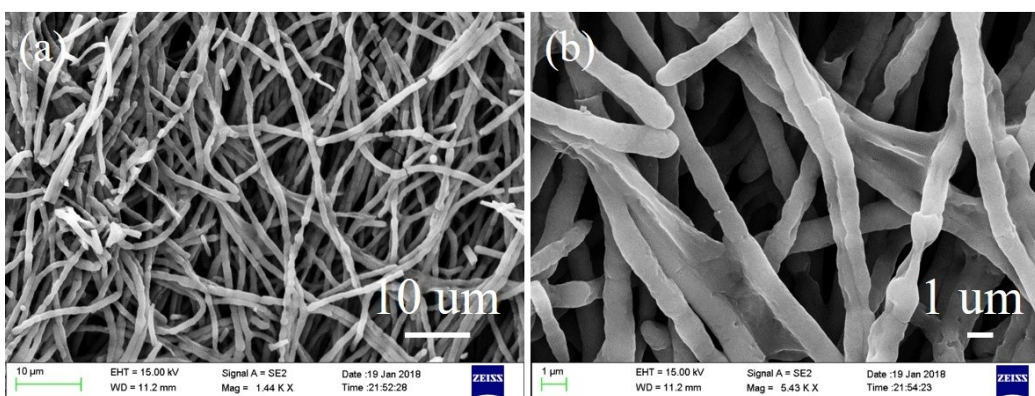


Fig. S2. SEM images of N-FHCF (MV).

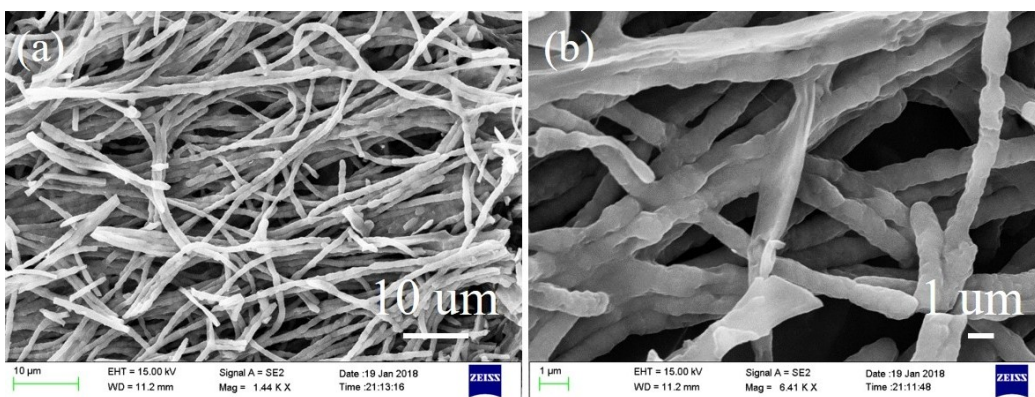


Fig. S3. SEM images of N-S-FHCF (CR).

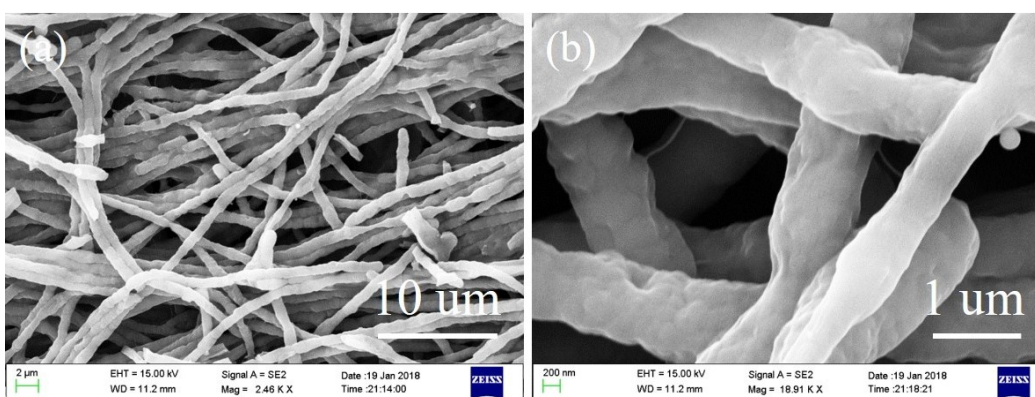


Fig. S4. SEM images of N-S-FHCF (AF).

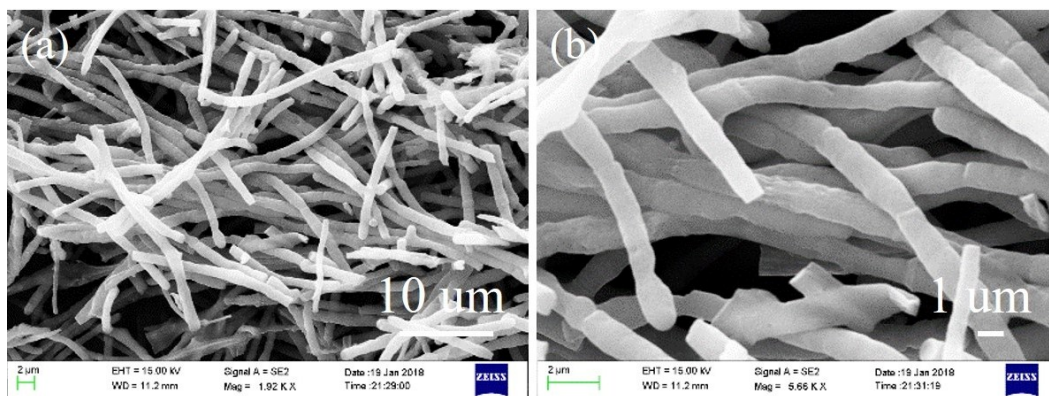


Fig. S5. SEM images of N-FHCF (RB).

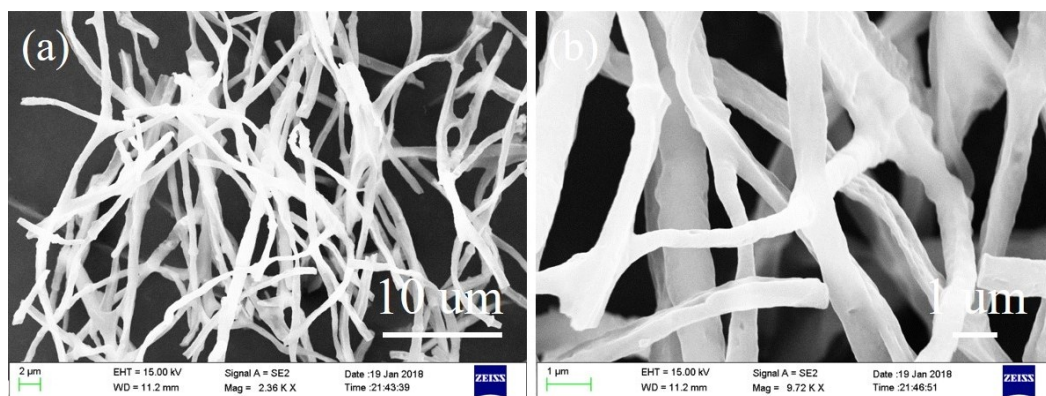


Fig. S6. SEM images of N-S-FHCF (MO).

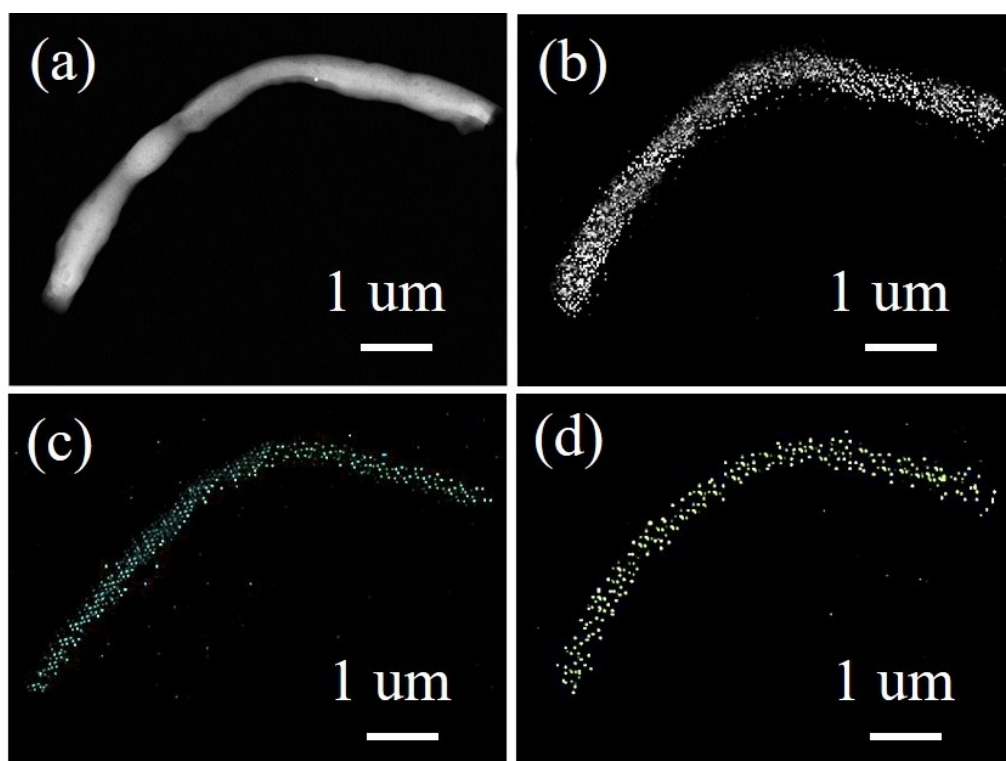


Fig. S7. (a) Typical EFTEM image and corresponding elemental mapping images of (b) C, (c) N, and (d) O.

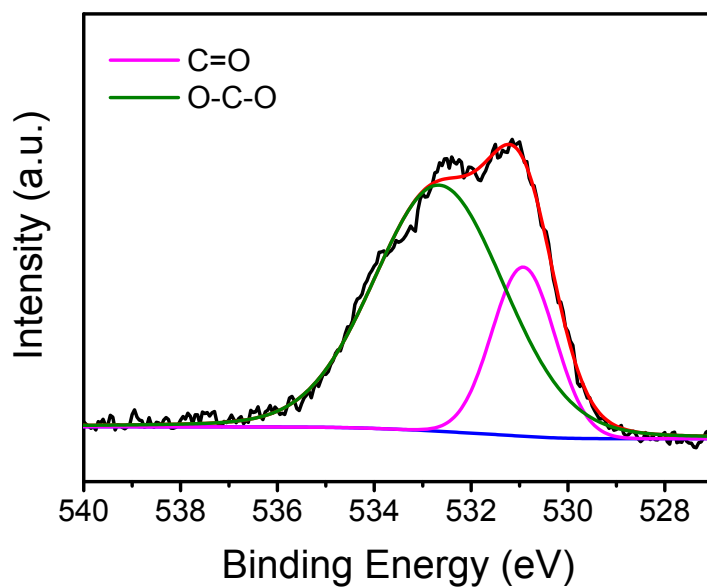


Fig. S8. The high-resolution spectra in O1s region for N-S-FHCF (MB).

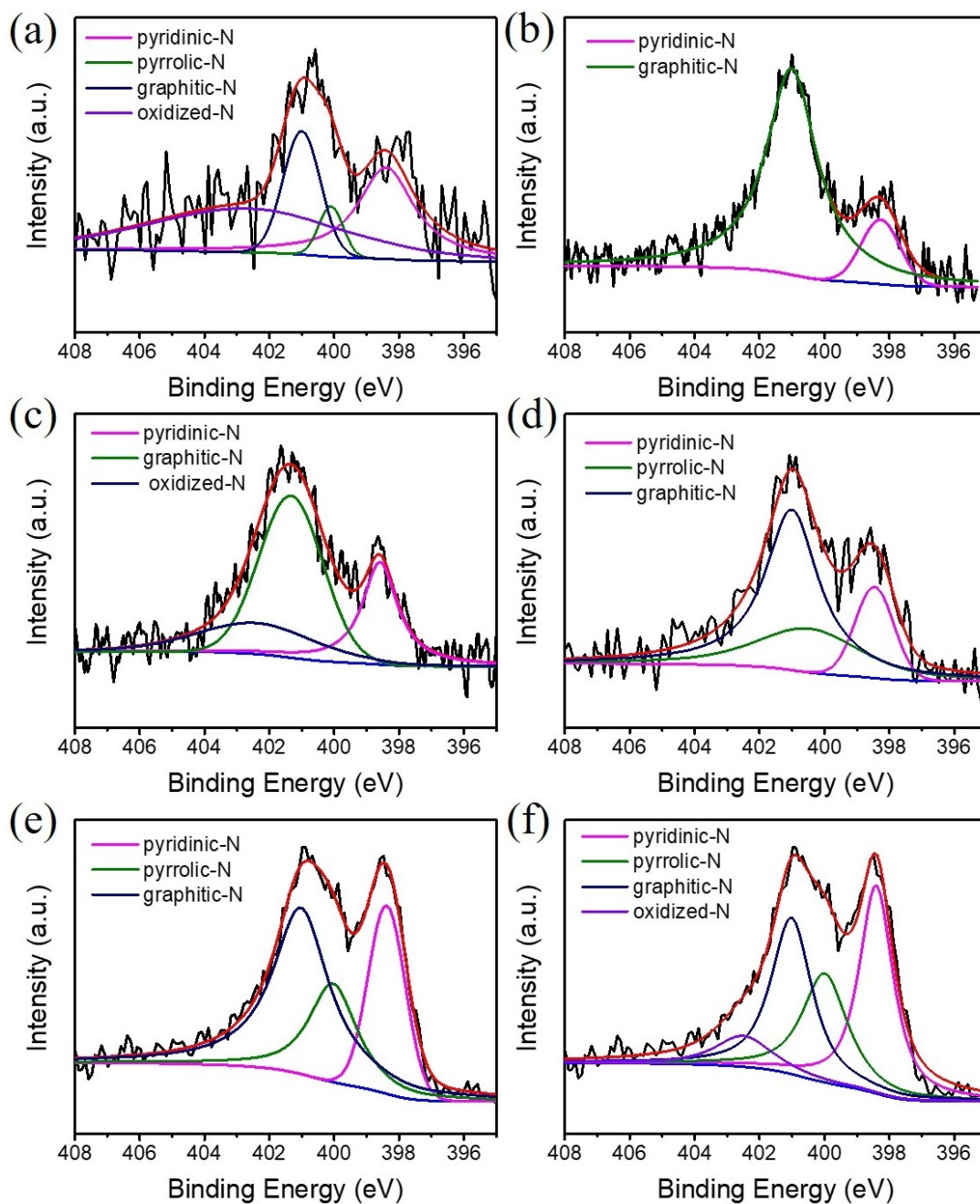


Fig. S9. The high-resolution spectra in N1s region for (a) FHCF, (b) N-FHCF (MV), (c) N-S-FHCF (CR), (d) N-S-FHCF (AF), (e) N-FHCF (RB), (f) N-S-FHCF (MO)

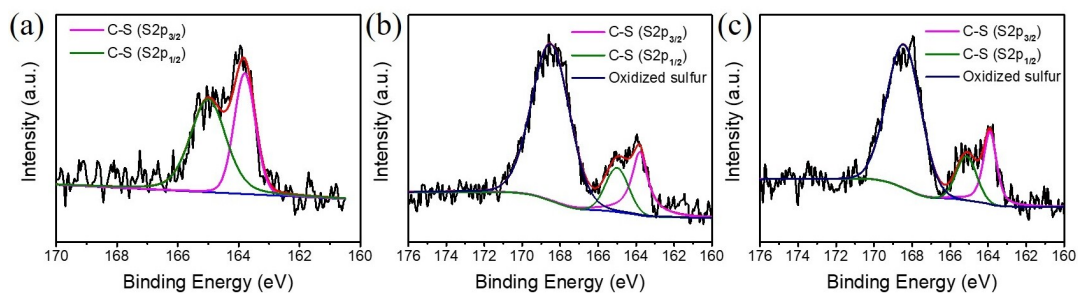


Fig. S10. The high-resolution spectra in S2p region for (a) N-S-FHCF (CR), (b) N-S-FHCF (AF), (c) N-S-FHCF (MO).

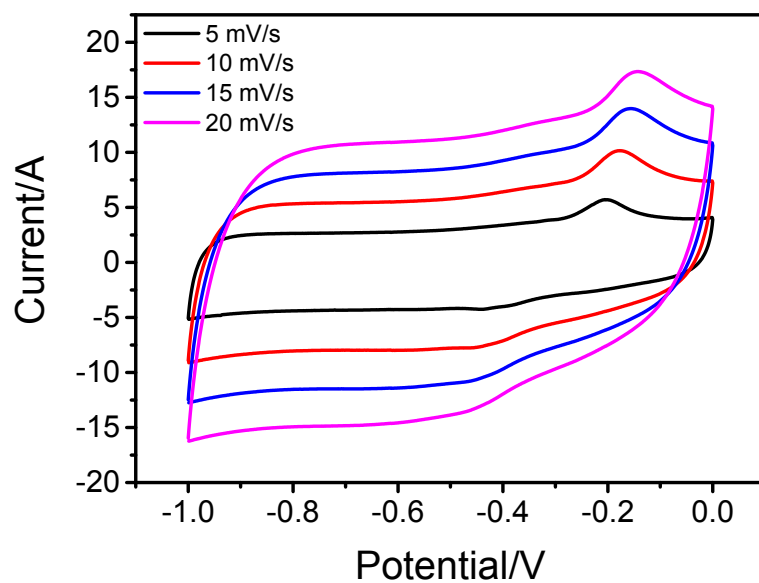


Fig. S11. CV curves of N-S-FHCF (MO) at different scan rates.

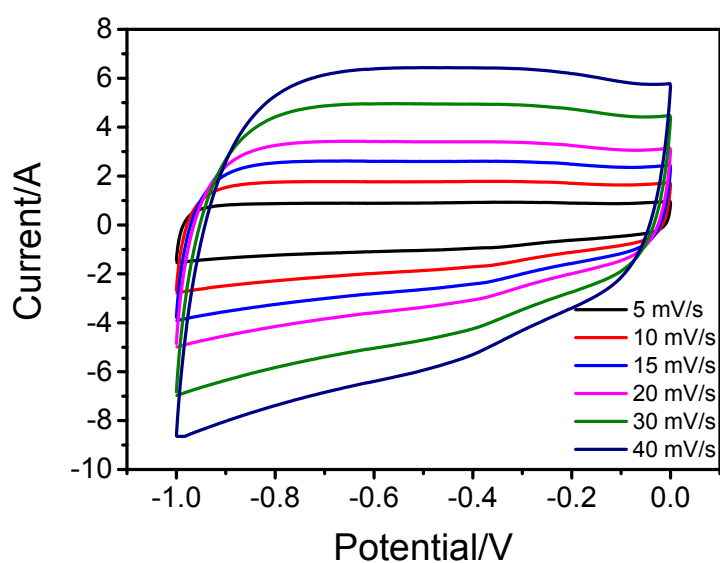


Fig. S12. CV curves of N-S-FHCF (CR) at different scan rates.

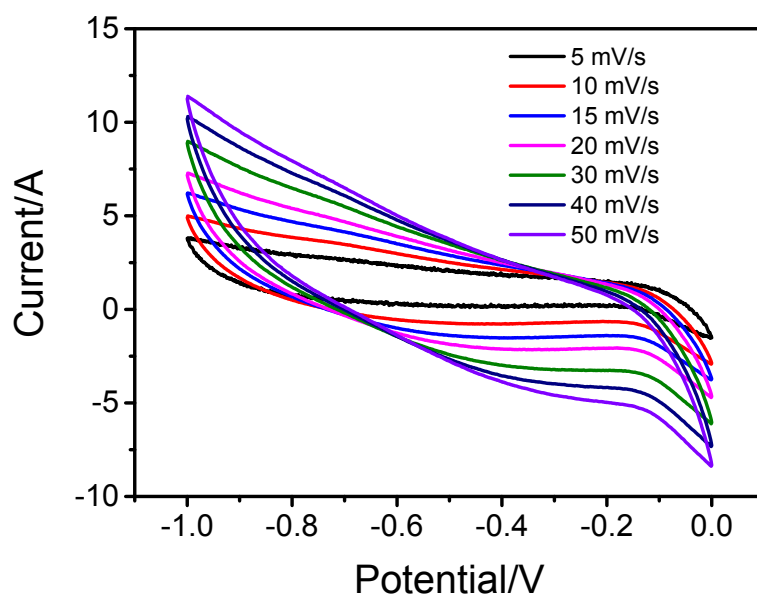


Fig. S13. CV curves of N-S-FHCF (AF) at different scan rates.

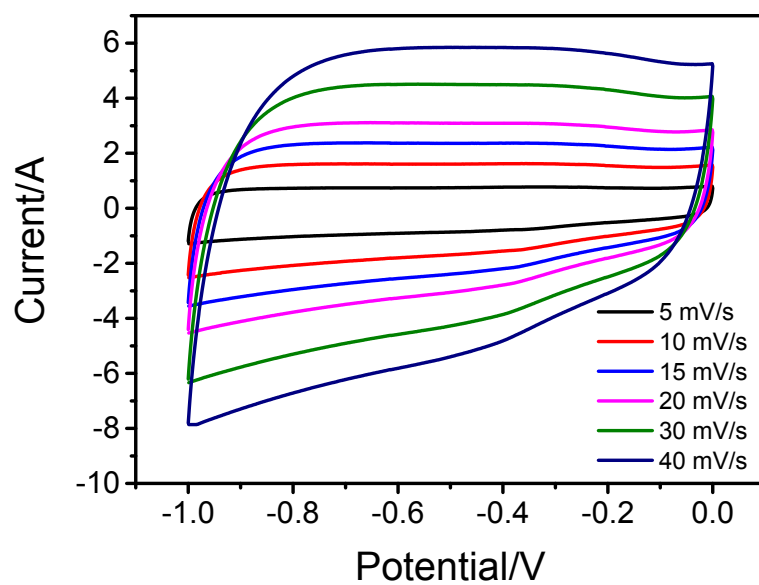


Fig. S14. CV curves of N-S-FHCF (MV) at different scan rates.

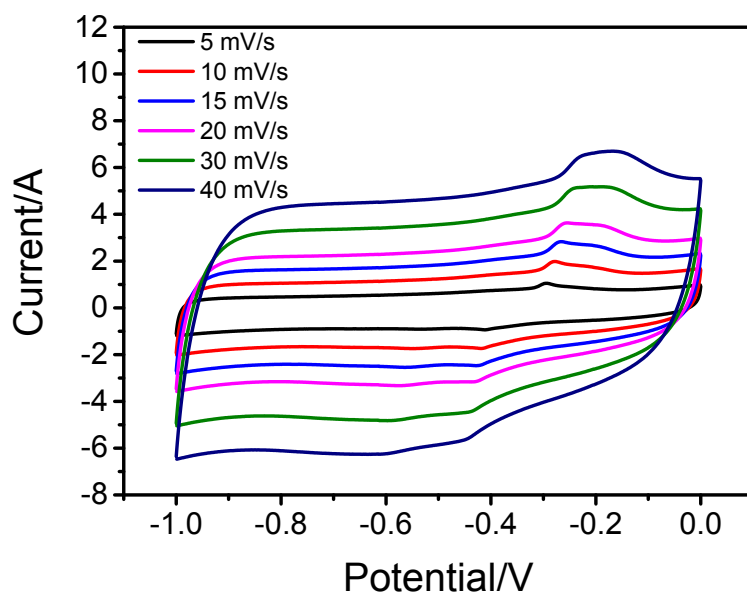


Fig. S15. CV curves of N-S-FHCF (RB) at different scan rates.

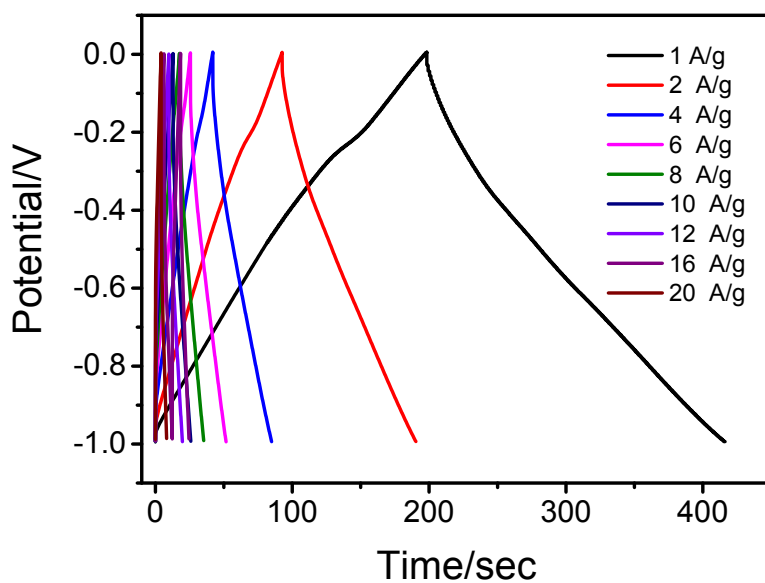


Table S16. GCD profiles of N-S-FHCF (MO) at various current densities.

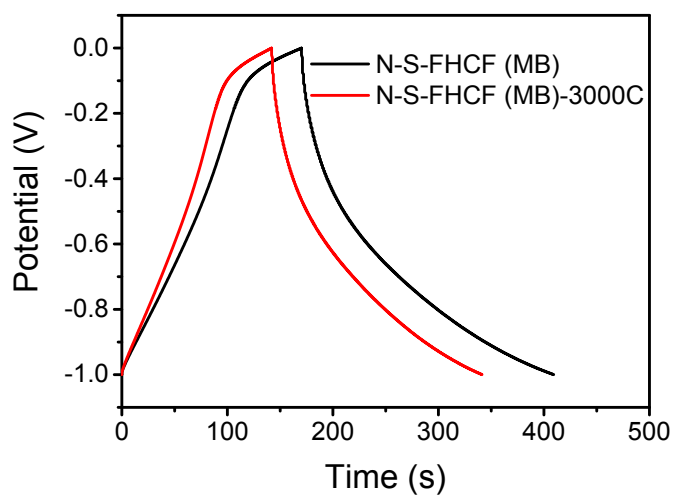


Table S17. 1st and 3000st GCD profiles of N-S-FHCF (MB) at 1 A/g.

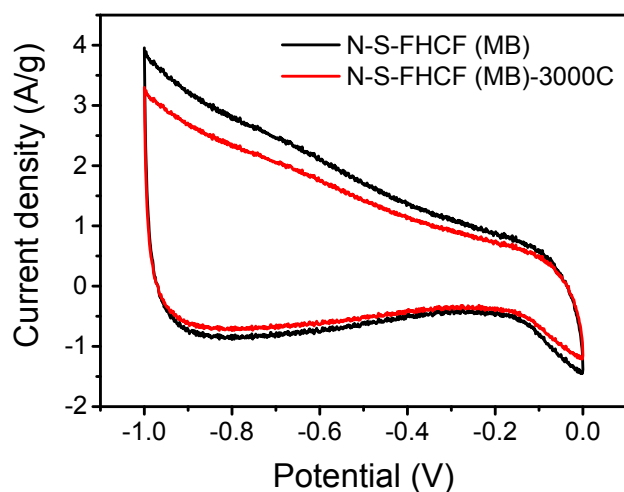


Table S18. 1st and 3000st CV curves of N-S-FHCF (MB) at scan rate of 5 mV/s.

Table S1. EIS fitting results of FHCF and N-S-FHCF (MB) electrodes.

	R_s	R_{ct}
FHCF	0.75 Ω	3.59 Ω
N-S-FHCF (MB)	0.34 Ω	1.13 Ω