

Supplementary Information

Stable lithium-sulfur full cell enabled by dual functional and interconnected mesocarbon array

Daxian Cao,¹ Yucong Jiao,¹ Qingfu Cai,² Dandan Han,² Qing Zhang,¹ Yi Ma,¹ Angang Dong,² Hongli Zhu^{1*}

¹Department of Mechanical and Industrial Engineering, Northeastern University, Boston, Massachusetts 02115, United States

²Department of Chemistry and Collaborative Innovation Center of Chemistry for Energy Materials, Fudan University, Shanghai 200433, China

*: Corresponding author: Hongli Zhu. E-mail: h.zhu@neu.edu

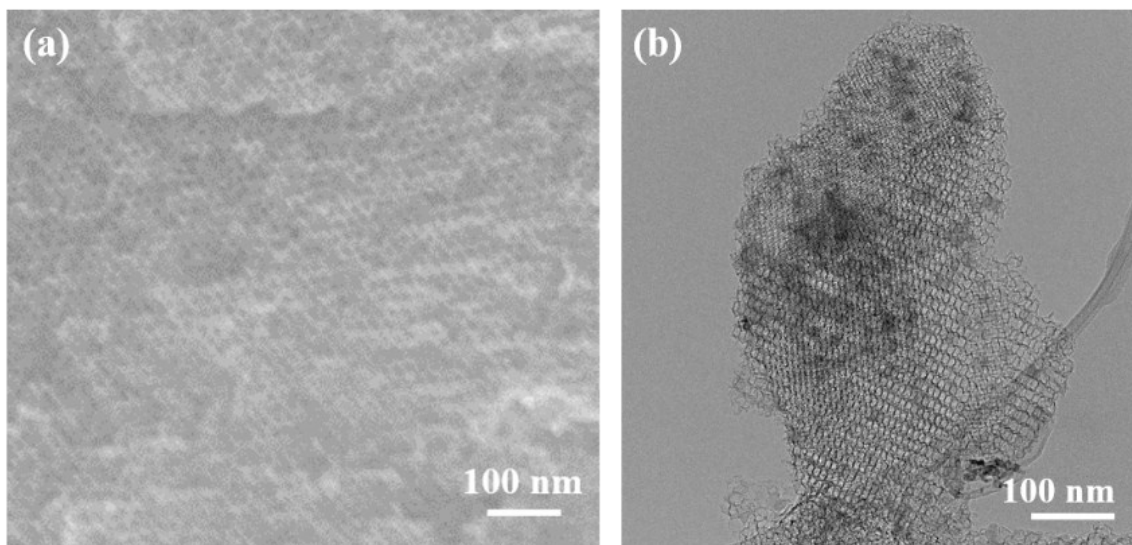


Figure S1. (a) SEM and (b) TEM images of MPC-1300 with sulfur melt inside, showing long-range ordered mesoporous property.

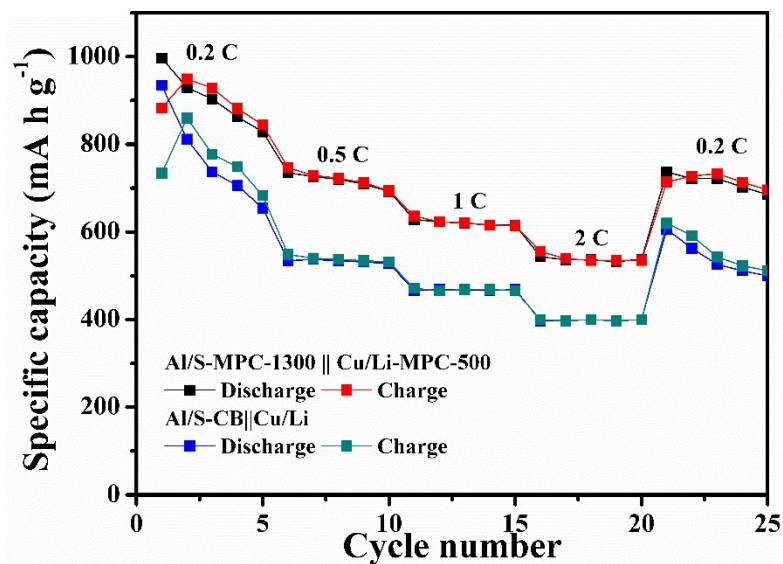


Figure S2. The rate performance of Al/S-MPC-1300 || Cu/Li-MPC-500 cell and Al/S-CB || Cu/Li cell.

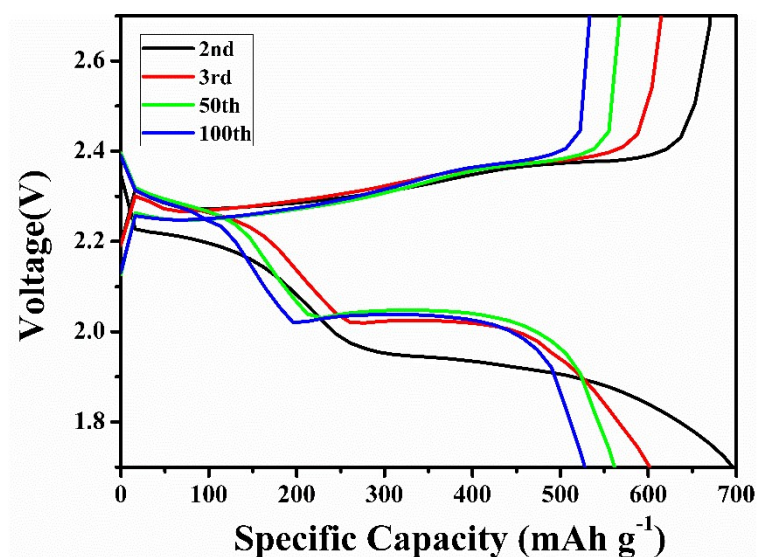


Figure S3. The charge/discharge profiles of Al/S-MPC-1300 || Cu/Li-MPC-500 cell.

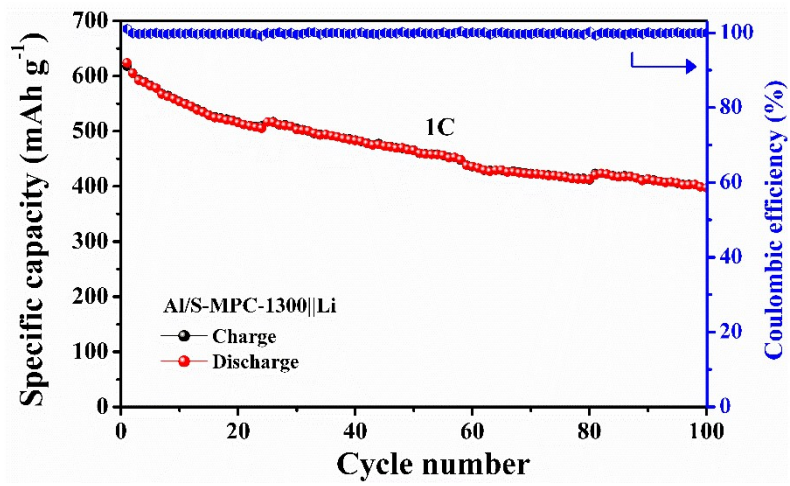


Figure S4. The cycling performance of Al/S-MPC-1300 || Li foil cell.