

Conductive Silk-Polypyrrole Composite Scaffolds with Bioinspired Nanotopographic Cues for Cardiac Tissue Engineering

Jonathan H. Tsui, Nicholas A. Ostrovsky-Snider, David M. P. Yama, Jordan D. Donohue,
Jong Seob Choi, Rakchanok Chavanachat, Jesse D. Larson, Amanda R. Murphy, and
Deok-Ho Kim

Supporting Information

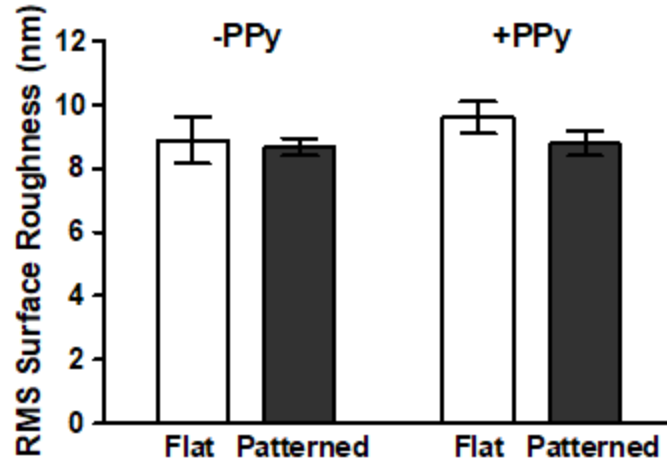


Figure 1. Surface roughness of fabricated substrates are unaffected by PPy deposition. RMS surface roughness values obtained using AFM show no significant difference across all substrate types.

Table 1. Amplicon context sequences and lengths for the primers used for qRT-PCR analyses.

Gene	Amplicon Context Sequence	Amplicon Length (bp)
<i>hMYH7</i>	14:23891477-23892840	113
<i>TNNT2</i>	1:201330439-201331128	117
<i>GJA1</i>	6:121756921-121768079	130
<i>SCN5A</i>	3:38614052-38620958	100