

Supporting Information

Hierarchically Structured Seamless Silk Scaffolds for Osteochondral Interface Tissue Engineering

Yogendra Pratap Singh¹, Joseph Christakiran Moses¹, Bibhas K. Bhunia¹, Samit Kumar Nandi² and Biman B. Mandal^{1}*

¹Biomaterial and Tissue Engineering Laboratory, Department of Biosciences and Bioengineering, Indian Institute of Technology Guwahati, Guwahati – 781039, Assam, India

²Department of Veterinary Surgery and Radiology, West Bengal University of Animal and Fishery Sciences, Kolkata – 700037, West Bengal, India

*Corresponding author: Tel: +91-361-2582225

Email: biman.mandal@iitg.ernet.in, mandal.biman@gmail.com

1. Morphology of the scaffolds under bright field imaging

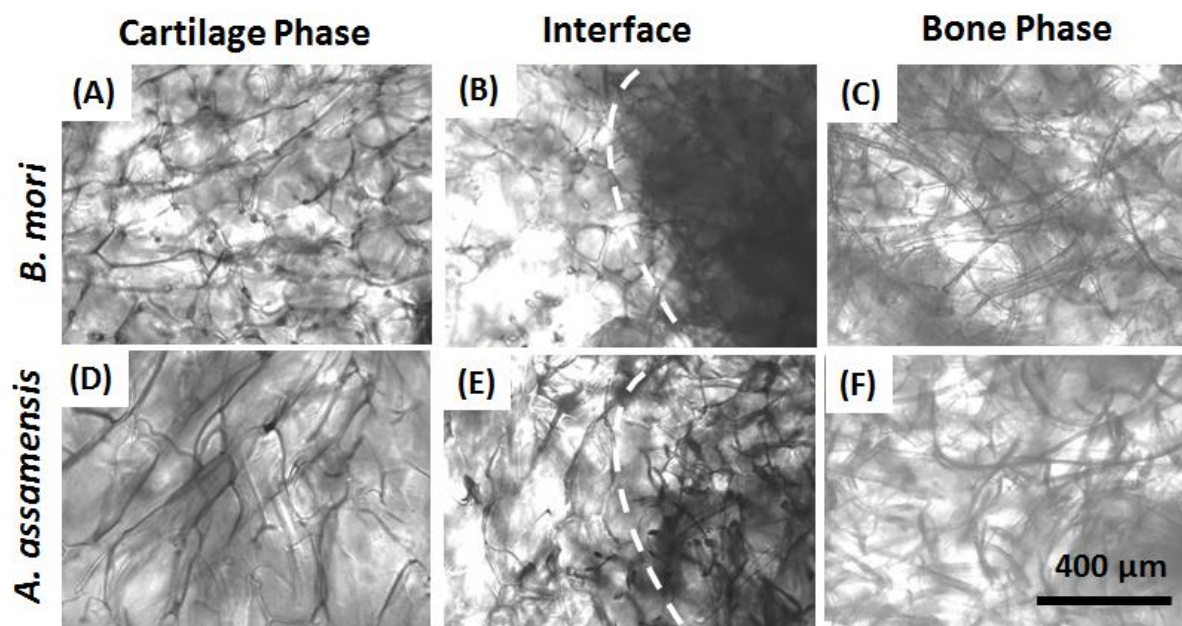


Figure S1. Bright field images of the scaffolds showing the architecture of the scaffold. Scale bar = 400 μm.

2. *In vitro* histological assessment of the cell-seeded scaffolds

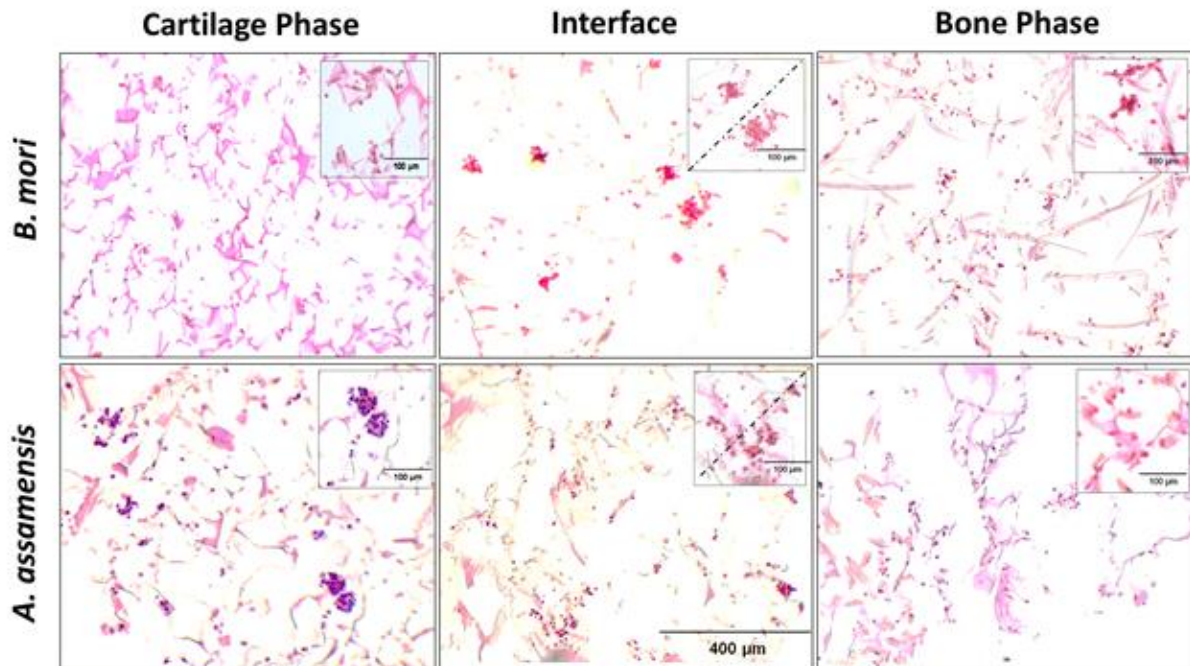


Figure S2. Histological assessment of the constructs *in vitro*. Haematoxylin & Eosin stained images. Scale bar = 400 µm.

3. Primer sequences used for gene expression study using real-time PCR study

Table S1. Sequence of primers for real-time PCR

Gene	Sequence	Accession No.
Porcine aggrecan	F 5'-CCCAACCAGCCTGACAACCTT-3'	NM_001164652.1
	R 5'-CCTTCTCGTGCCAGATCATCA-3'	
Porcine sox-9	F 5'-TTCCGCGACGTGGACAT-3'	NM_213843.1
	R 5'-GGCGGCAGGTACTGGTCAAACCTC-3'	
Human runx-2	F 5'-GATGGGACTGTGGTTACTGTCA-3'	NM_001278478.1
	R 5'-CTCAGATCGTTGAACCTTGC-3'	
Human osteopontin	F: 5'-TGAAACGAGTCAGCTGGATG-3'	NM_001251830.1
	R: 5'-TGAAATTCATGGCTGTGGAA-3'	
Human GAPDH	F: 5'-GACCTGACCTGCCGTCTA-3'	NM_001289746.1
	R: 5'-GTTGCTGTAGCCAAATTCGTT-3'	
Porcine GAPDH	F: 5'-TCGGAGTGAACGGATTTGG-3'	NM_001206359.1
	R: 5'-CCAGAGTTAAAAGCAGCCCT-3'	