

Supporting Information

Facile Synthesis of pH-Responsive Doxorubicin-Loaded Layered Doubled Hydroxide for Efficient Cancer Therapy

Abdul Hakeem,[‡] Guiting Zhan,[‡] Qingbo Xu, Tuying Yong, Lu Gan,^{*} and Xiangliang Yang

*National Engineering Research Center for Nanomedicine, Hubei Key Laboratory of Bioinorganic Chemistry and Materia Medica, College of Life Science and Technology, Huazhong University of Science and Technology, Wuhan 430074, China. *E-mail: lugan@mail.hust.edu.cn*

[‡] These authors contributed equally to this paper.

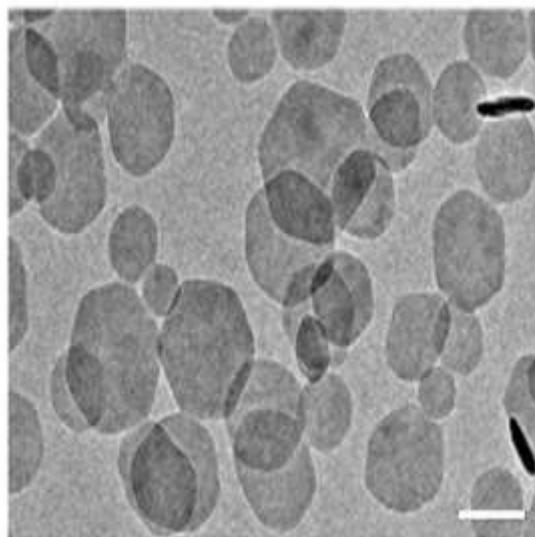


Fig. S1 TEM images of DOX@MgAl-LDH after after incubation in DMEM medium for 24 h. Scale bar: 100 nm.

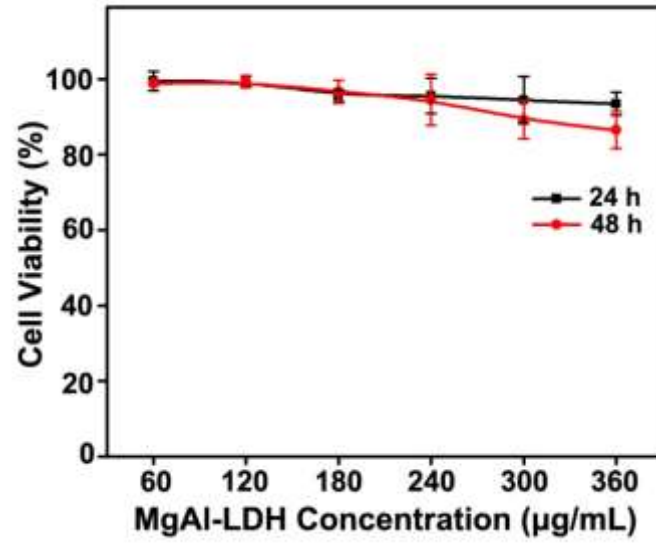


Fig. S2 Cell viability of NIH3T3 cells incubated with different concentrations of MgAl-LDH for different time periods. Data as mean value \pm SD (n=6). ** P <0.01. *** P <0.001.