

Electronic Supplementary Information

Biological effects of apatite nanoparticle-constructed ceramic surfaces in regulating behaviours of mesenchymal stem cells

Changchun Zhou,^a Yi Jiang,^b Zhihui Sun,^c Yanyan Li,^c Bo Guo^d and Youliang Hong^{a*}

^a National Engineering Research Center for Biomaterials, Sichuan University, Chengdu, 610064, P. R. China

^b The Second Hospital, Jilin University, Changchun 130012, P. R. China

^c Department of Pharmacy of the First Hospital, Jilin University, Changchun 130012, P. R. China

^d Department of Ophthalmology, West China Hospital, Sichuan University, Chengdu, 610064, P. R. China

* Corresponding author. E-mail: hyl@scu.edu.cn (Y. Hong)

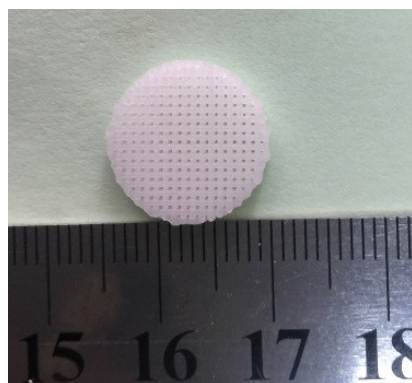


Figure S1. 3D printed PLLA scaffolds.



Figure S2. The porous CaP ceramic was implanted into the dorsal muscle of rabbit.

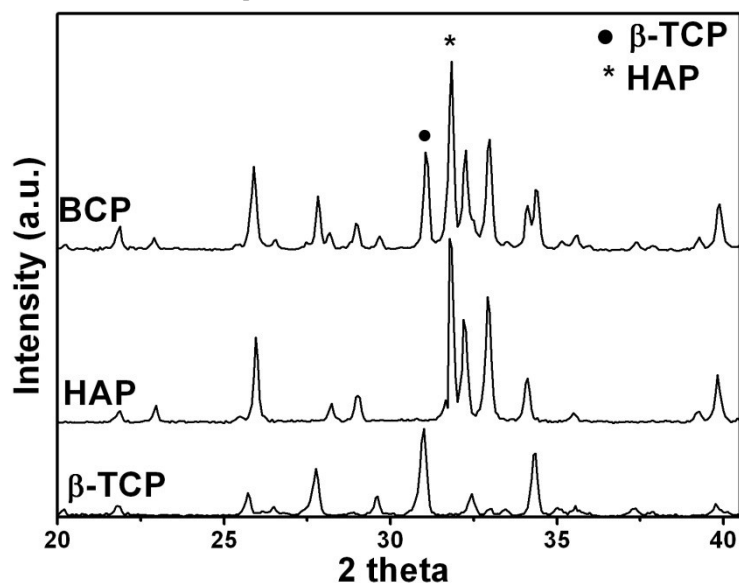


Figure S3. XRD patterns of three kinds of sintered porous ceramics.

Table S1. The primers used for PCR analyses.

symbol	Accession No.		primers
GAPDH	NM-008084	Forward	5'-CTCAACTACATGGTCTACATGTTCCA-3'
		Reverse	5'-CCCATTCTCGGCCTTGACT-3'
osteocalcin	NM_007541	Forward	5'-GGCCCTGAGTCTGACAAAGC-3'
		Reverse	5'-GCCGGAGTCTGTTCACCTT-3'
alkaline phosphatase	AY054302	Forward	5'-CCAGGGCTGCAAGGACAT-3'
		Reverse	5'-GGCCGCCACCCATGAT- 3'
Bone morphogenetic protein 2	NM_007553	Forward	5'-CCTGCAGCAGCCAACTTGA-3'
		Reverse	5'-CCACTGACTTGTGTTCTGATTCACT-3'
core binding factor α 1	NM_001145920	Forward	5'-CTCAGTGATTAGGGCGCATTC-3'
		Reverse	5'-GGAGGGCCGTGGGTCT-3'
osteopontin	D11411.1	Forward	5'-GCGCACGAATCCTCTGGGACTGGAC-3'
		Reverse	5'-CGCGTGCTTAGGAGACCCTGACCTG-3'
Transforming growth factor beta-1	XM_008249704.1	Forward	5'-CTCCGGGCGAGGCCTCGGGGGAGGT-3'
		Reverse	5'-GGCATTGTGGCTCGTGTAAG-3'
Pax-1	XM_008256391.1	Forward	5'-CGTGCCCTACAACCACAT-3'
		Reverse	5'-CGTGAGCCAGTCGTTGTAGG-3'