

Electronic Supplementary Information

Integration of Organic Electrochemical Transistors and Immuno-Affinity Membranes for Label-Free Detection of Interleukin-6 at the Physiological Concentration Range through Antibody-Antigen Recognition

Denis Gentili,* Pasquale D'Angelo, Francesca Militano, Rosalinda Mazzei, Teresa Poerio, Marco Brucale, Giuseppe Tarabella, Simone Bonetti, Simone L. Marasso, Matteo Cocuzza, Lidietta Giorno, Salvatore Iannotta and Massimiliano Cavallini

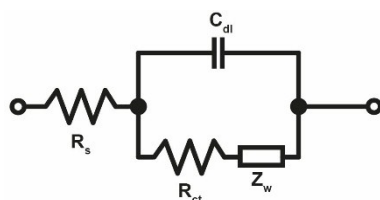


Figure S1. Randles equivalent circuit: dynamic solution resistance (R_s), double layer capacitance measured between the gold electrode and the electrolyte solution (C_{dl}), charge transfer resistance (R_{ct}) and Warburg Element (Z_w).

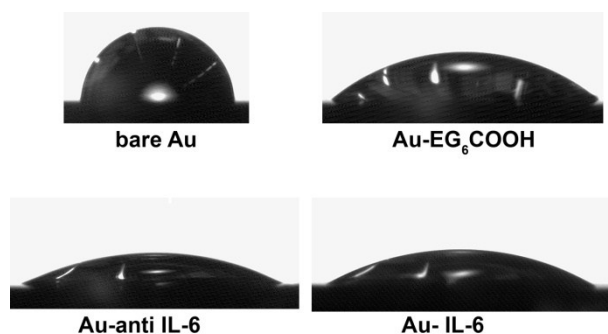


Figure S2. Static water contact angle measurements of gold-coated substrates after each functionalization and incubation steps.

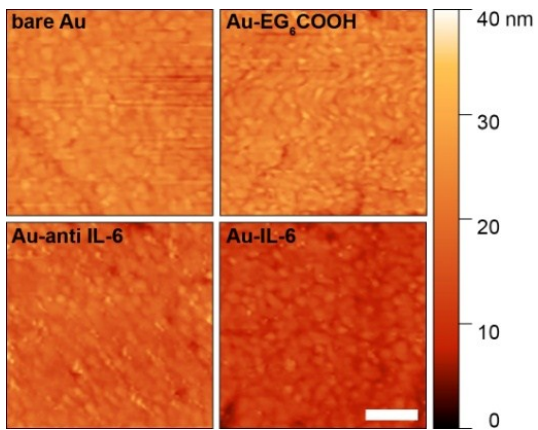


Figure S3. AFM images (scale bar: 200 nm) of a gold-coated surface after each functionalization and incubation step.

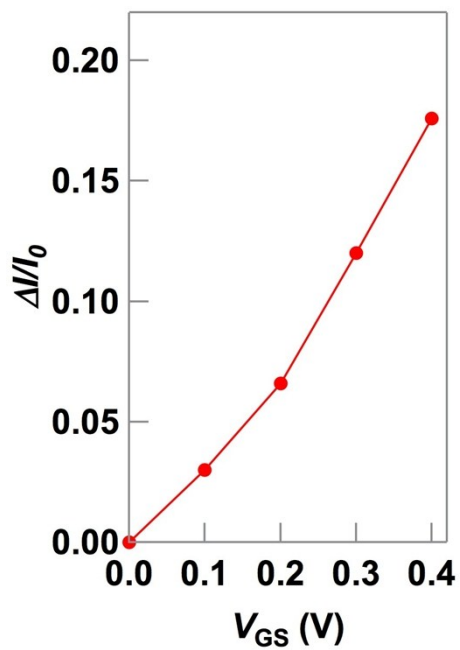


Figure S4. $\Delta I/I_0$ parameter as a function of V_{GS} (V_{DS} at -0.1 V) of OECT working with bare Au gate electrode