

## Electronic Supplementary Information

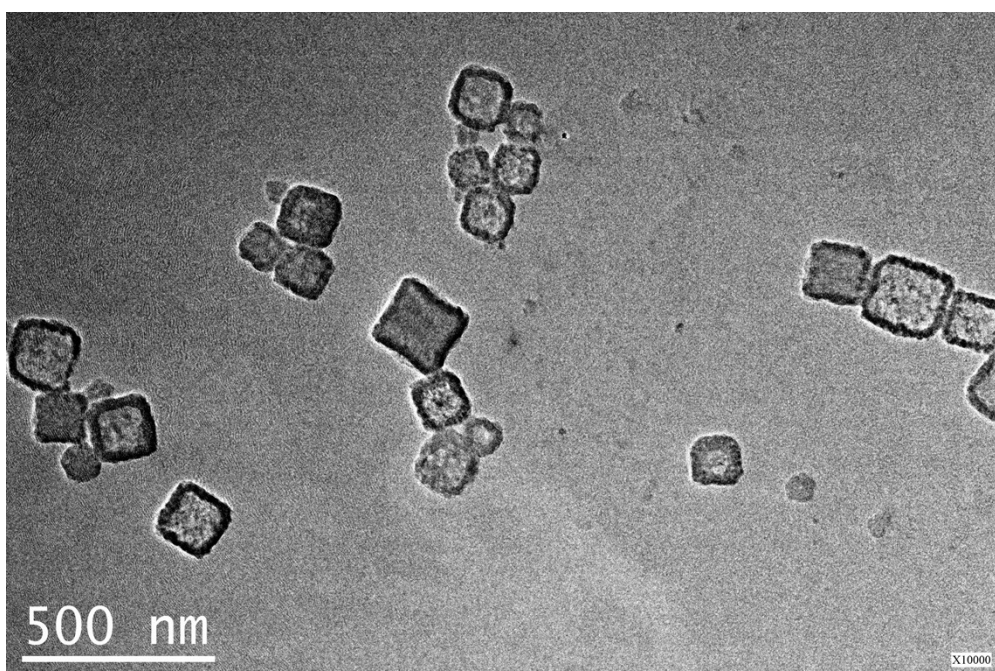
### Chloroquine-Loaded Prussian Blue Platform with Controllable Autophagy Inhibition for Enhanced Photothermal Therapy

Yan Ma<sup>a#</sup>, Huajian Chen<sup>a#</sup>, Baimei Hao<sup>a#</sup>, Junhong Zhou<sup>a</sup>, Gang He<sup>a</sup>, Zhaohua Miao<sup>a\*</sup>, Yan Xu<sup>a</sup>, Li Gao<sup>a</sup>, Wei Zhou<sup>a\*</sup> and Zhengbao Zha<sup>a, b\*</sup>

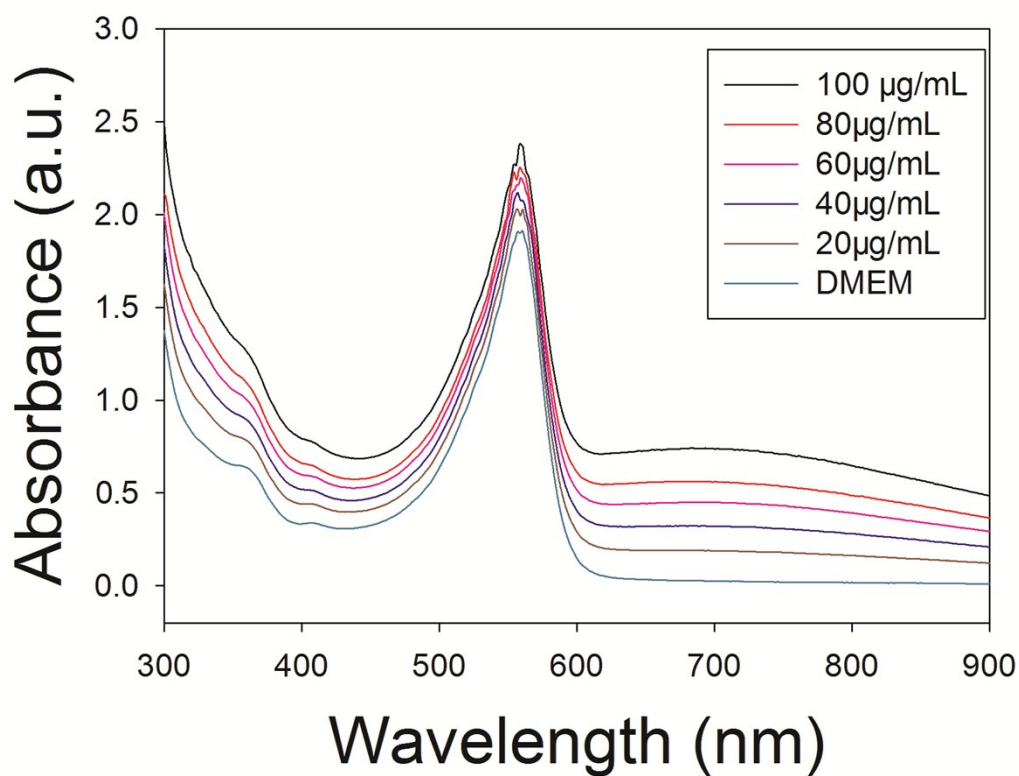
<sup>a</sup>School of Biological and Medical Engineering, Hefei University of Technology, Hefei, Anhui 230009, P. R. China.

<sup>b</sup>Biomedical and Environmental Interdisciplinary Research Centre, Hefei, 230010, P. R. China.

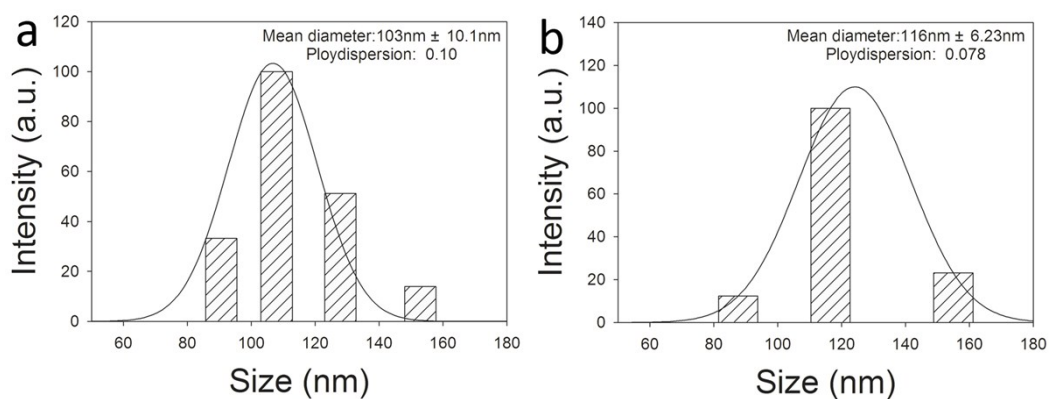
\* Corresponding author. Email: [zhaohua\\_miao@hfut.edu.cn](mailto:zhaohua_miao@hfut.edu.cn); [zhouwei@hfut.edu.cn](mailto:zhouwei@hfut.edu.cn); [zbzha@hfut.edu.cn](mailto:zbzha@hfut.edu.cn); Tel: +86 551 62901285.



**Fig. S1** TEM image of as-prepared HMPBs.



**Fig. S2** UV-vis-NIR spectra of PCM@HMPBs dispersed in DMEM cell culture medium.



**Fig. S3** Diameter distribution of PCM@HMPBs in a) DI Water and b) DMEM cell culture medium from DLS test.

**Table S1** Various CQ loading amount of (CQ+PCM)@HMPBs

| <b>Feeding amount of CQ:PCM (mg)</b> | <b>CQ (<math>\mu\text{g}/1 \text{ mg}</math><br/>(CQ+PCM)@HMPBs)</b> |
|--------------------------------------|--|
| 60:300                               | 22.2   |
| 120:300                              | 42.8   |
| 180:300                              | 82.3   |
| 240:300                              | 124.5  |
| 300:300                              | 150.1  |