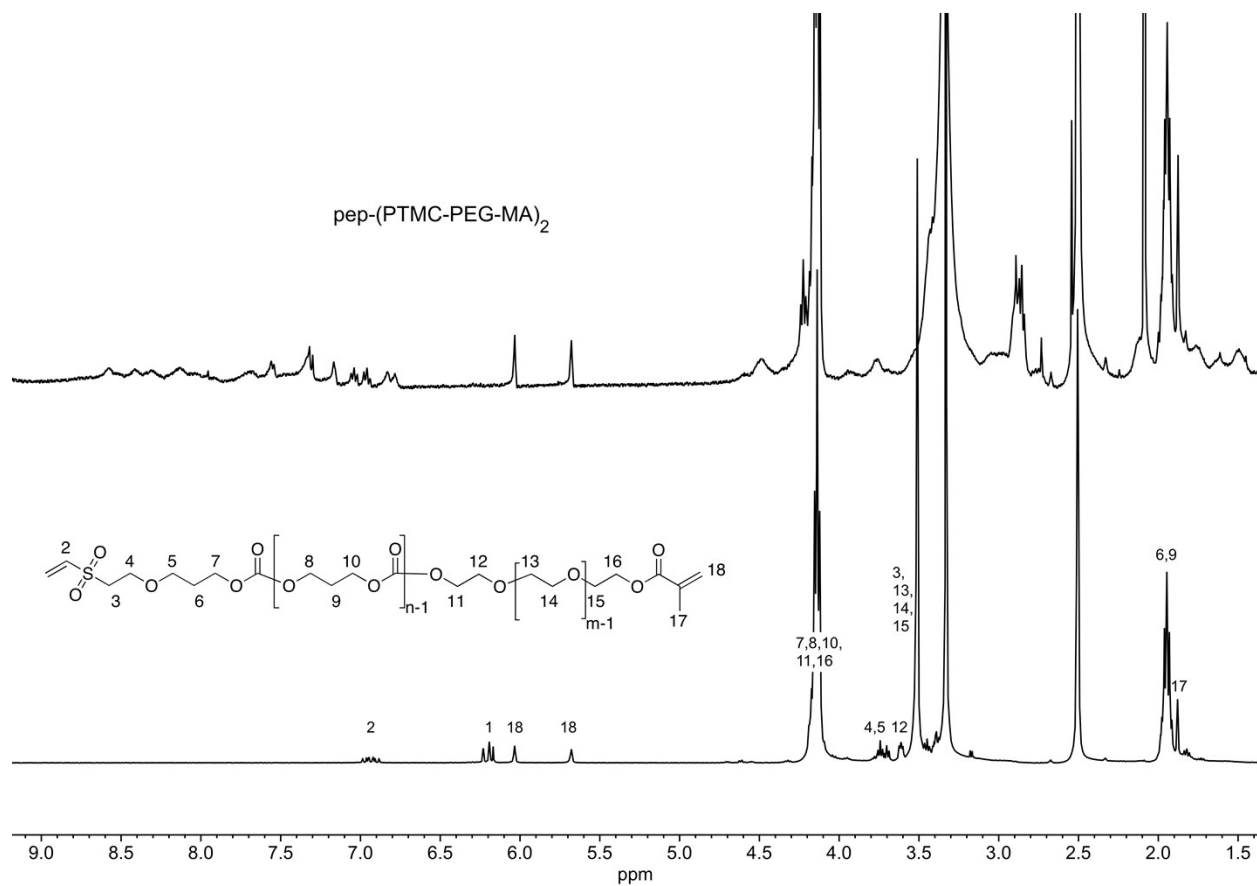
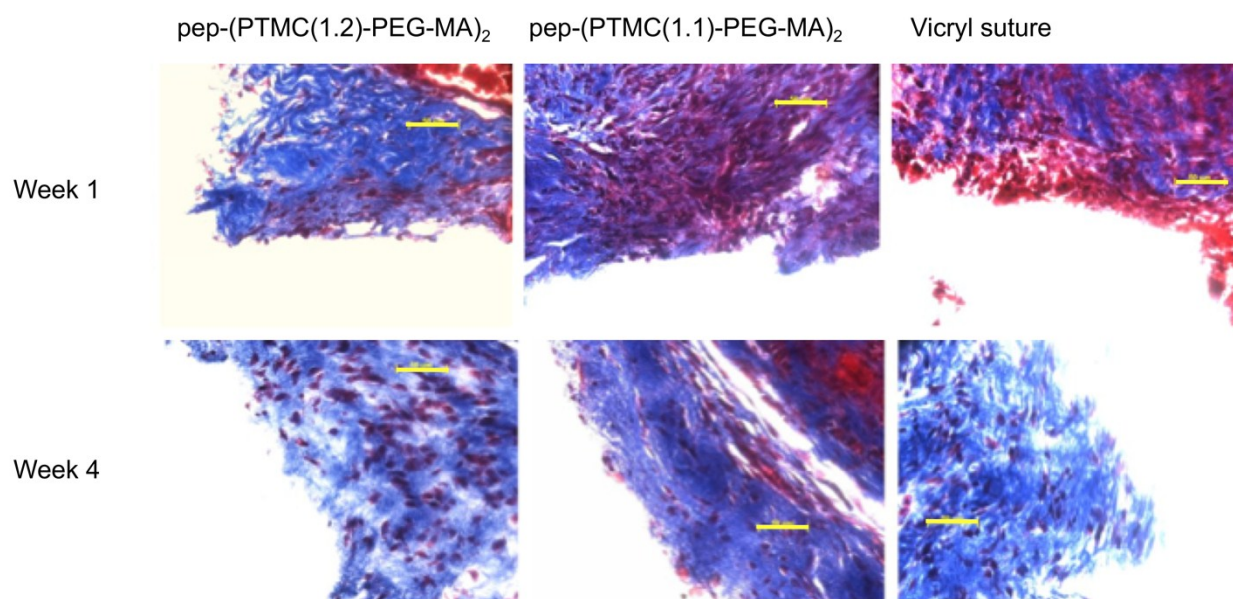


**Figure S1.** Representative <sup>1</sup>H NMR spectra of VS-PTMC-MA (bottom), peptide (middle) and pep-(PTMC-MA)<sub>2</sub> (top). The “\*” designates the carboxyl proton on the aspartic acid residues. The spectra were obtained in d<sub>6</sub>-DMSO.



**Figure S2.** Representative <sup>1</sup>H NMR spectra of VS-PTMC-PEG-MA (bottom) and pep-(PTMC-PEG-MA)<sub>2</sub> (top). The spectra were obtained in d<sub>6</sub>-DMSO.



**Figure S3.** Representative Masson's trichrome stained sections of tissue surrounding the implanted materials. The white region in each panel represents the location of the polymer implant. The yellow scale bar in each panel represents 50  $\mu\text{m}$ .