

Electronic Supplementary Information (ESI)

Injectable double-network hydrogel for co-culture of vascular endothelial cells and bone marrow mesenchymal stem cells for simultaneously enhancing vascularization and osteogenesis

Congchong Yang^a, Bing Han^a, Chunling Cao^a, Di Yang^b, Xiaozhong Qu^{*b} and Xiaoyan Wang^{*a}

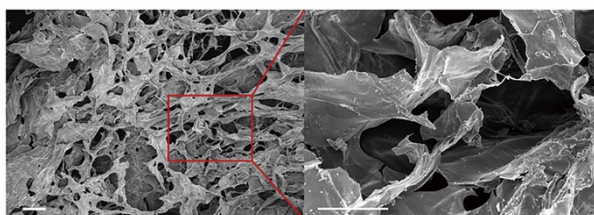


Fig. S1 Scanning electron microscope (SEM) images of freeze-dried GC/Alg DN hydrogel. Bar, 50 μ m.

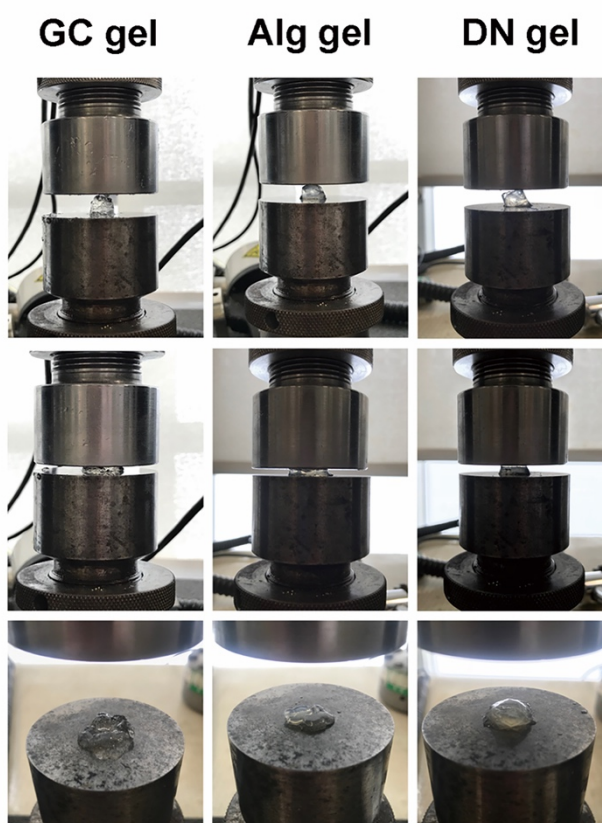


Fig. S2 Performance of GC, Alg, and GC/Alg DN hydrogels against compressive strain where different modes of failure is seen.