

Supporting Information

Near-Infrared Light-Mediated and Nitric Oxide-Supplied Nanospheres for the Enhanced Synergistic Thermo-chemotherapy

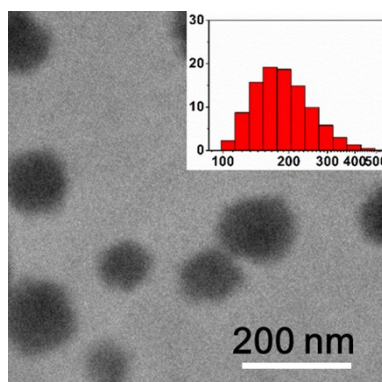


Figure S1. TEM and DLS of blank PNIPAM-SS-AMPS nanospheres.

wt%	AMPS (g)	NIPAM (g)	BAC (mg)	D _{DLS} (nm)
0%	0	2	79	513.5
2.5%	0.0876	1.9124	79	208.0
5%	0.1678	1.8322	79	164.5
7.5%	0.2586	1.7415	79	137.2
10%	0.31	1.69	79	131.6

Table S1. Feed ratio and DLS size of nanospheres

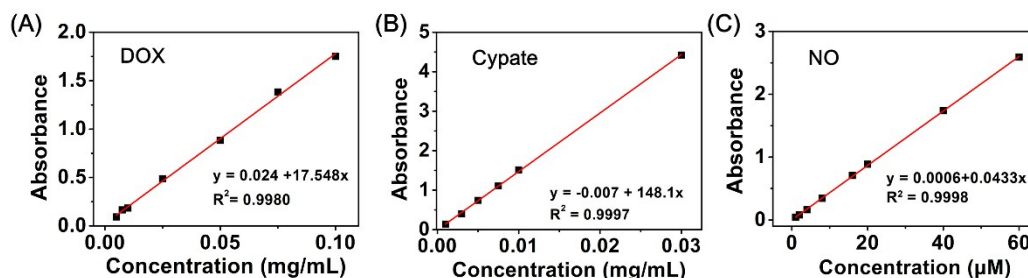


Figure S2. Standard working curve of DOX, Cypate and NO.

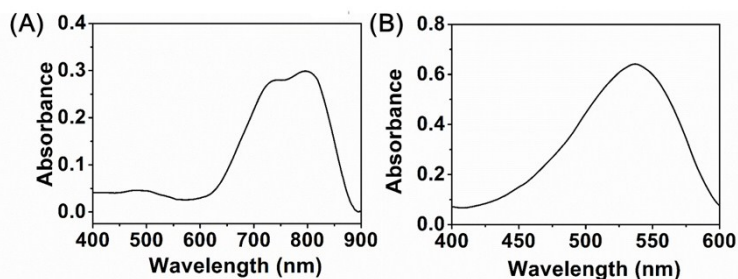


Figure S3. UV-vis spectra of drug loading efficiency (A), DOX and Cypate. (B) SNAP in Griess reagent system after removing DOX and nanospheres.

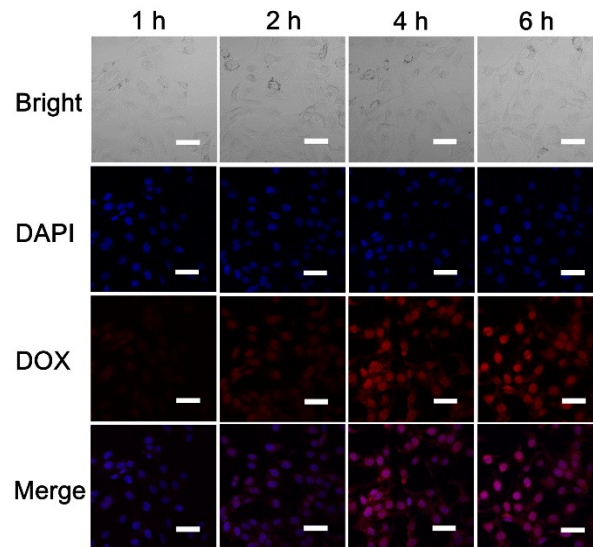


Figure S4. CLSM images of MCF-7/ADR cells after incubation with SDCN for 1 h, 2 h, 4 h and 6 h. DOX exhibited red fluorescence and DAPI staining the nucleus showed blue fluorescence. The scale bars correspond to 50 μm in all the images.

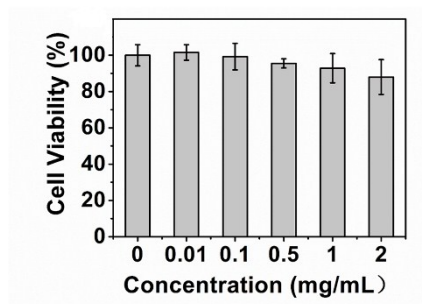


Figure S5. Relative viability of MCF-7/ADR cells incubated with different concentrations of blank NS in 24 h.