

Electronic Supplementary Information
of
**Self-delivery system based on amphiphilic proapoptotic peptide for
tumor targeting therapy**

*Si Chen,^{*a} Jin-Xuan Fan,^b Xin-Hua Liu,^b Ming-Kang Zhang,^b Fan Liu,^a Xuan Zeng,^{*b} Guo-Ping
Yan^{*a} and Xian-Zheng Zhang^b*

a. School of Material Science and Engineering, Wuhan Institute of Technology, Wuhan 430205, PR
China.

b. Key Laboratory of Biomedical Polymers of Ministry of Education & Department of Chemistry,
Wuhan University, Wuhan 430072, PR China.

* Corresponding Authors. sichen1989@163.com, zeng_xuan@163.com, guopyan2006@163.com

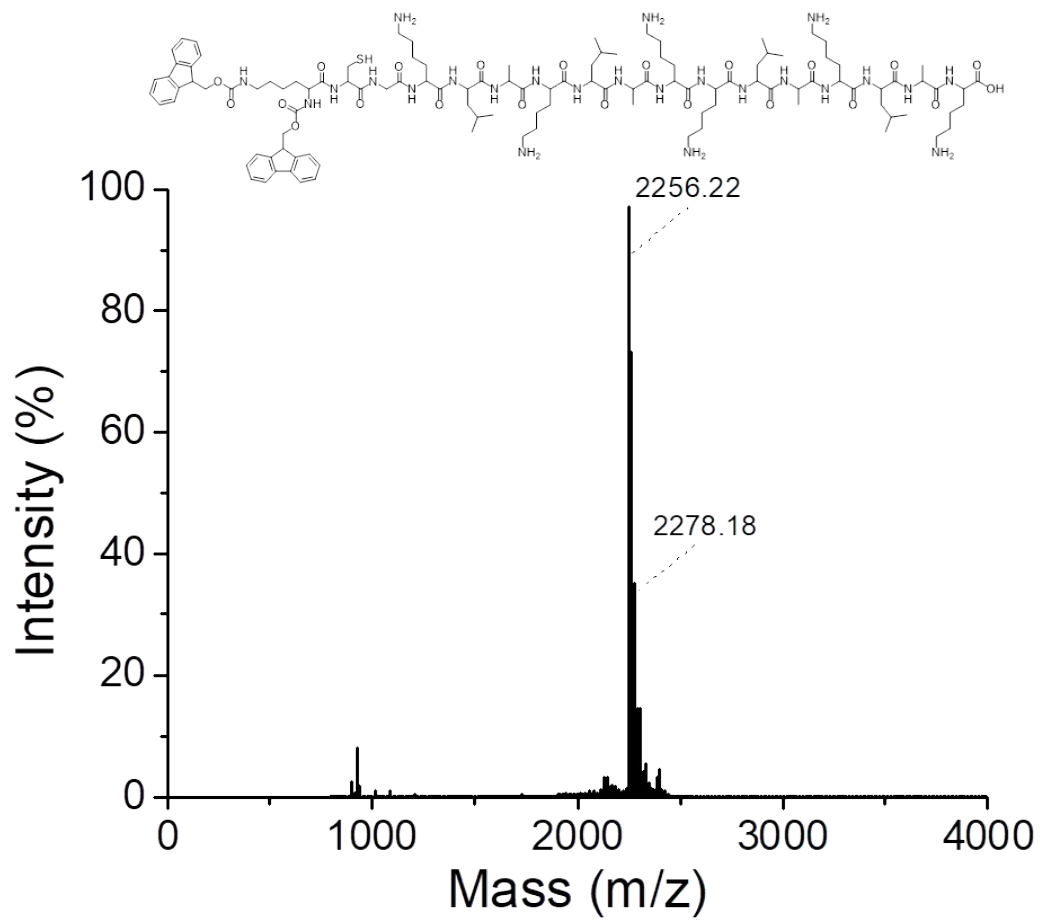


Figure S1. Chemical structure and mass spectra of KLAKLAKKLAKLAKGCK(Fmoc)₂.

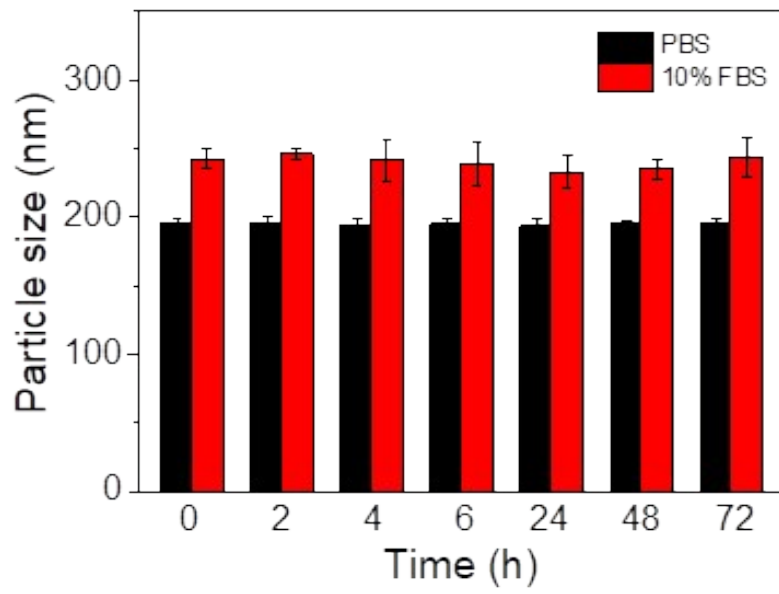


Figure S2. The particle size of KDH against medium with 10% serum or PBS

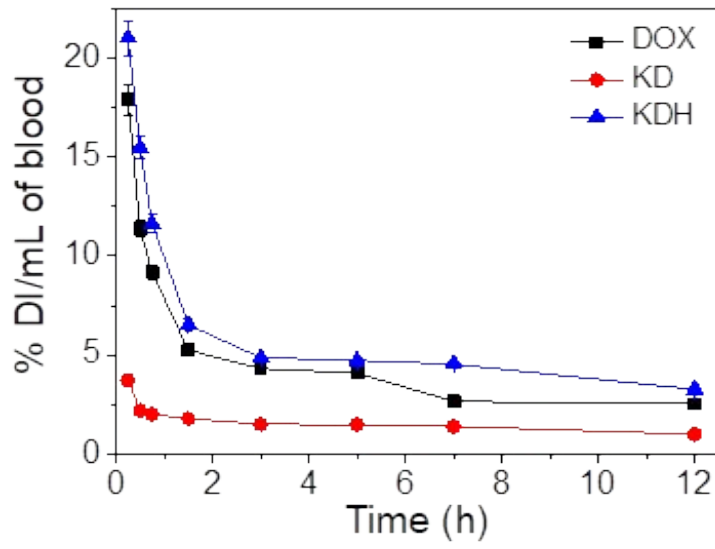


Figure S3. The pharmacodynamics study of samples

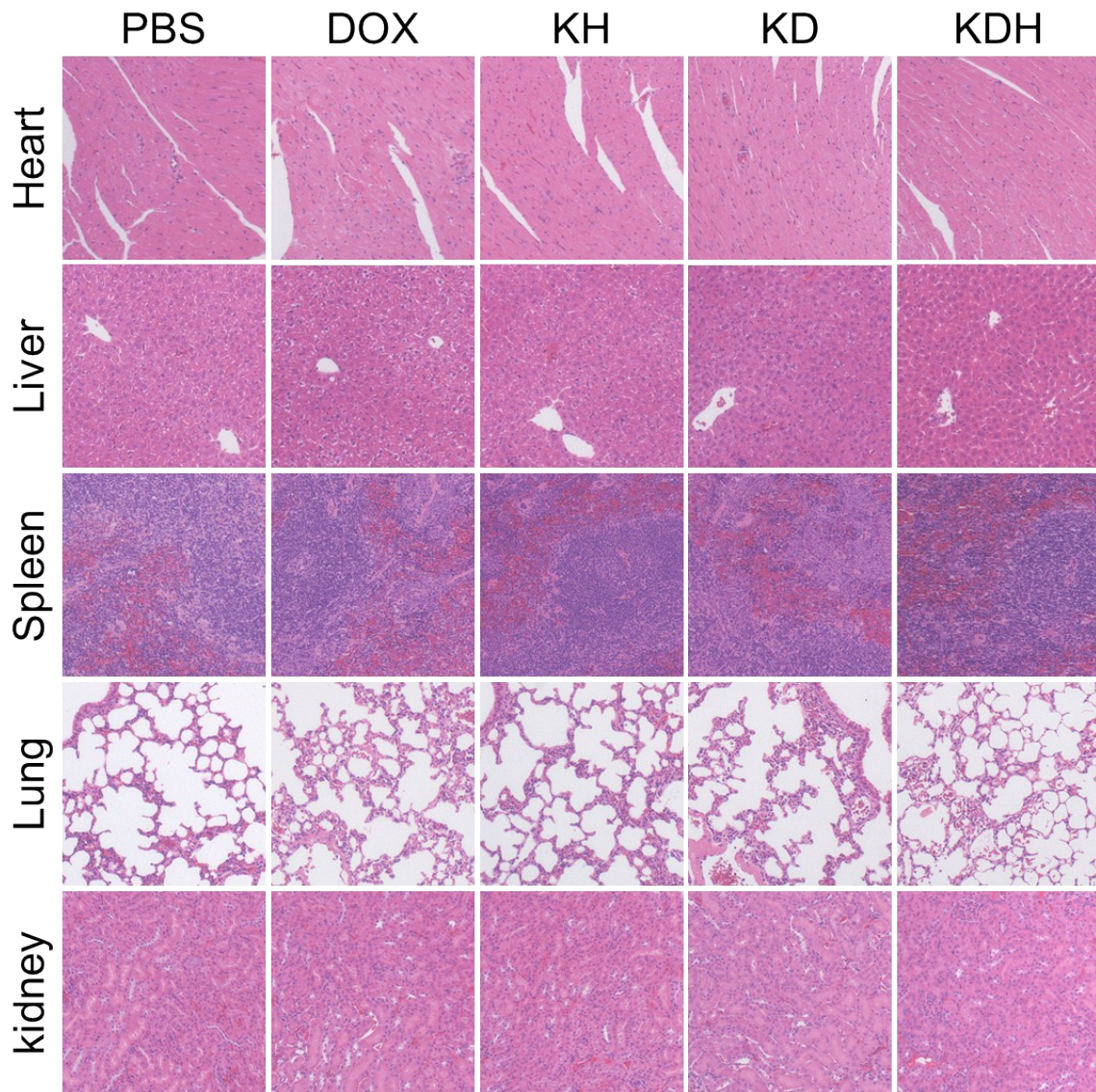


Figure S4. H&E staining images of organs after treated with samples at 15th day. The magnification was 40 ×.