

## Supporting Information

### **CsPbBr<sub>3</sub>/EuPO<sub>4</sub> Dual-phase Devitrified Glass for High-sensitive Self-calibrating Optical Thermometry**

Congyong Wang,<sup>ab</sup> Hang Lin,<sup>\*ac</sup> Xiaoqiang Xiang,<sup>ab</sup> Yao Cheng,<sup>a</sup> Qingming Huang,<sup>d</sup>  
Yan Gao,<sup>ab</sup> Xiangshui Cui,<sup>ab</sup> Yuansheng Wang<sup>\*a</sup>

<sup>a</sup> CAS Key Laboratory of Design and Assembly of Functional Nanostructures, and Fujian Key Laboratory of Nanomaterials, Fujian Institute of Research on the Structure of Matter, Chinese Academy of Sciences, Fuzhou, Fujian, 350002 (P. R. China);

<sup>b</sup> University of Chinese Academy of Sciences, Beijing, 100049 (P. R. China);

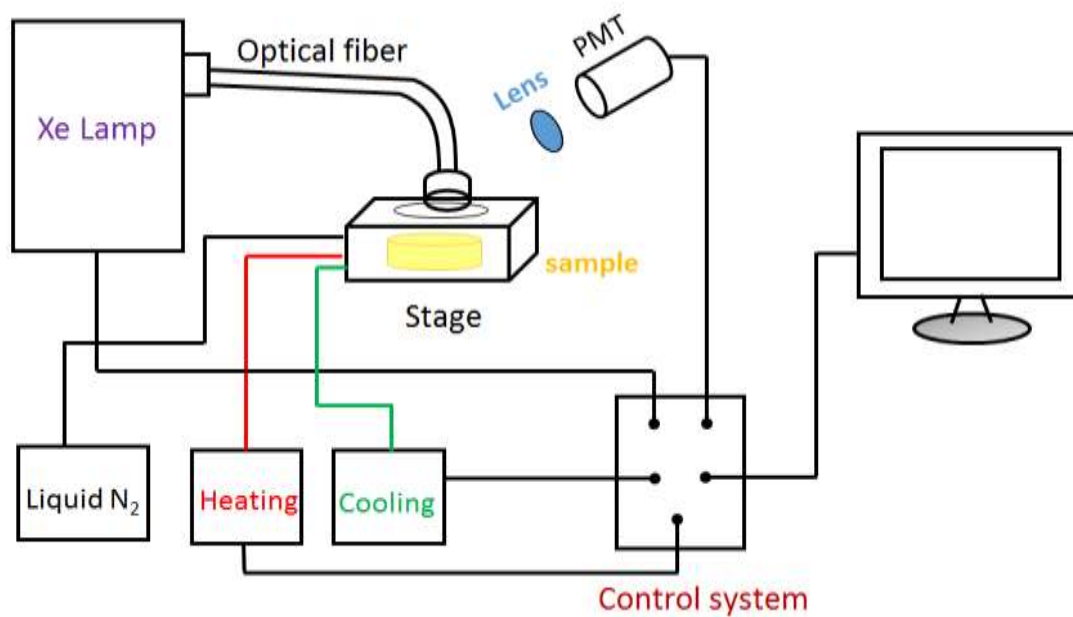
<sup>c</sup> State Key Laboratory of Structural Chemistry, Fuzhou, Fujian, 350002 (P. R. China);

<sup>d</sup> Instrumentation Analysis and Research Center, Fuzhou University, Fuzhou, Fujian, 350002 (P. R. China)

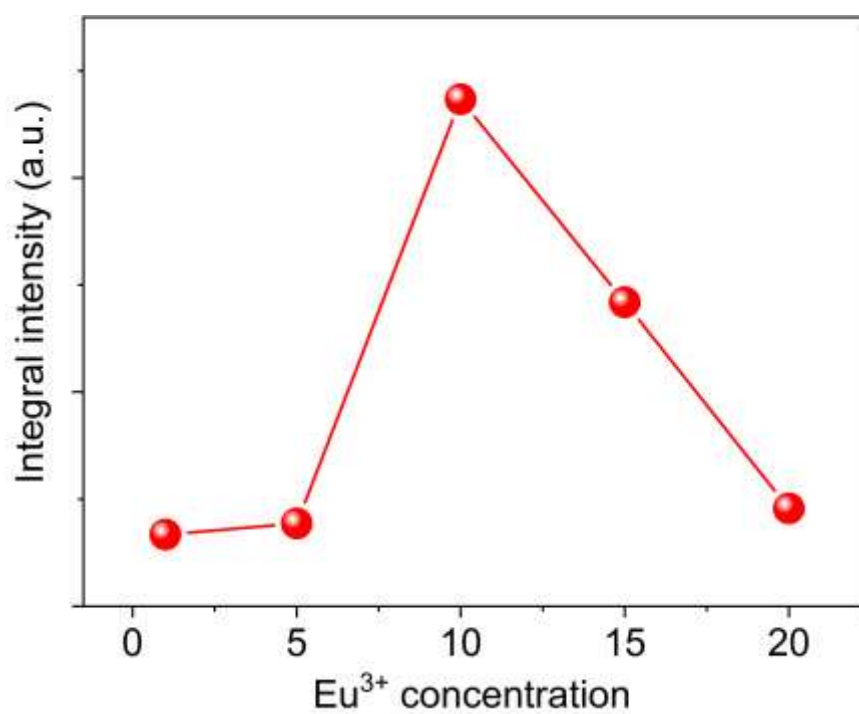
---

\*E-mail: lingham@fjirsm.ac.cn; Tel/Fax: +86-591-63179423

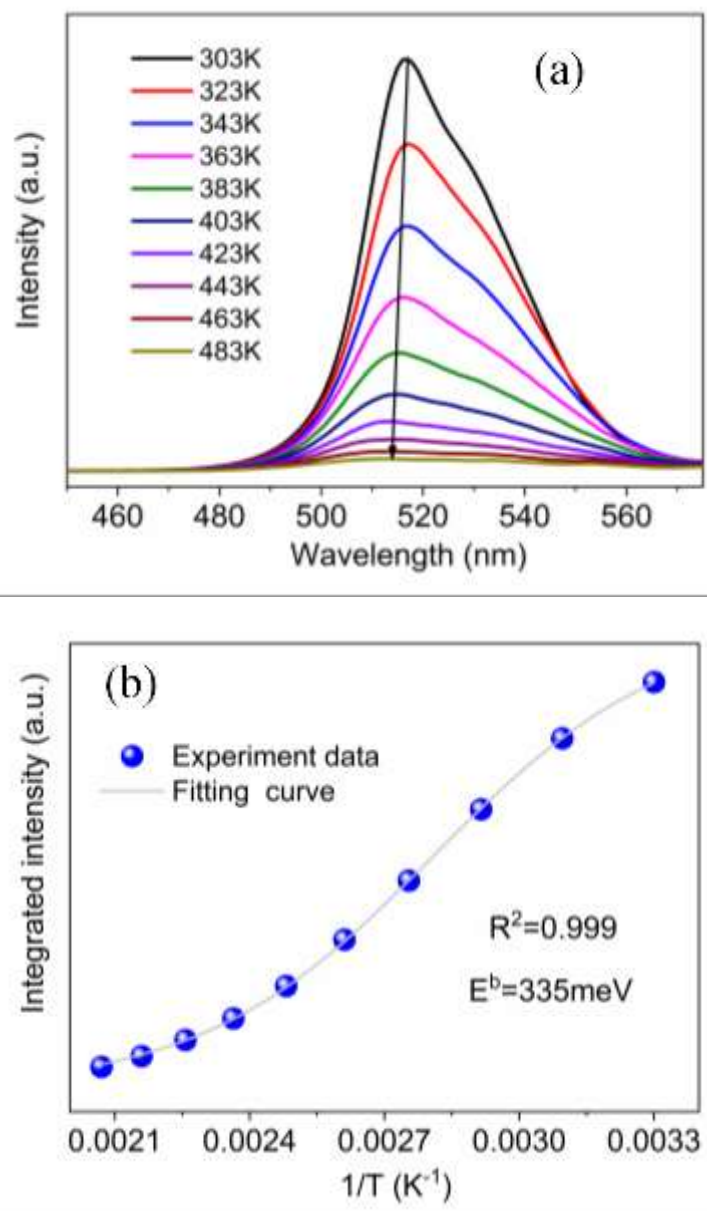
\*E-mail: yswang@fjirsm.ac.cn; Tel/Fax: +86-591-63179438



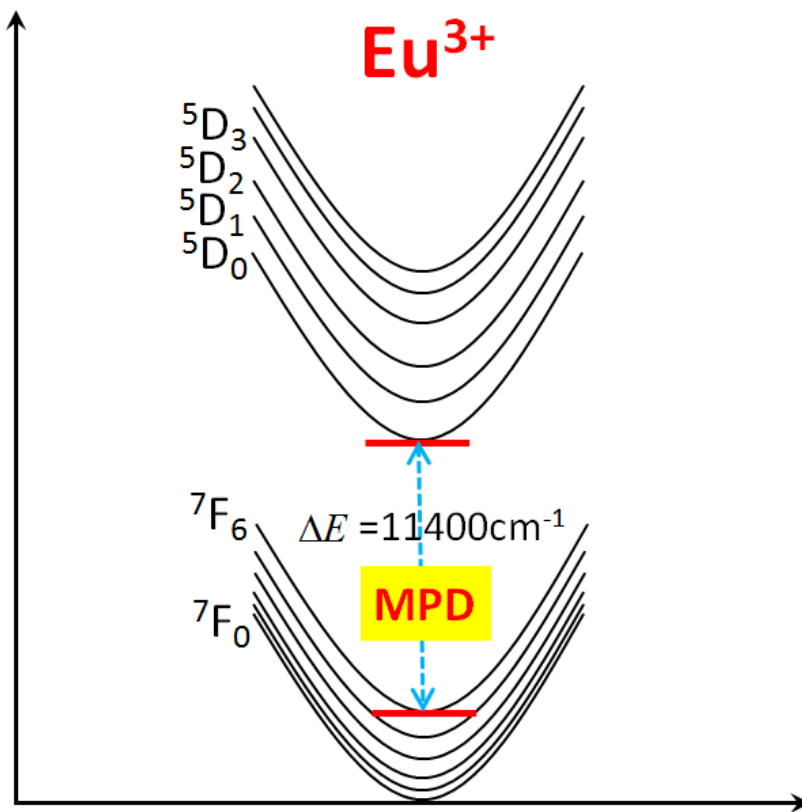
**Figure S1.** Schematic illustration of the setup of T-dependent PL measurements.



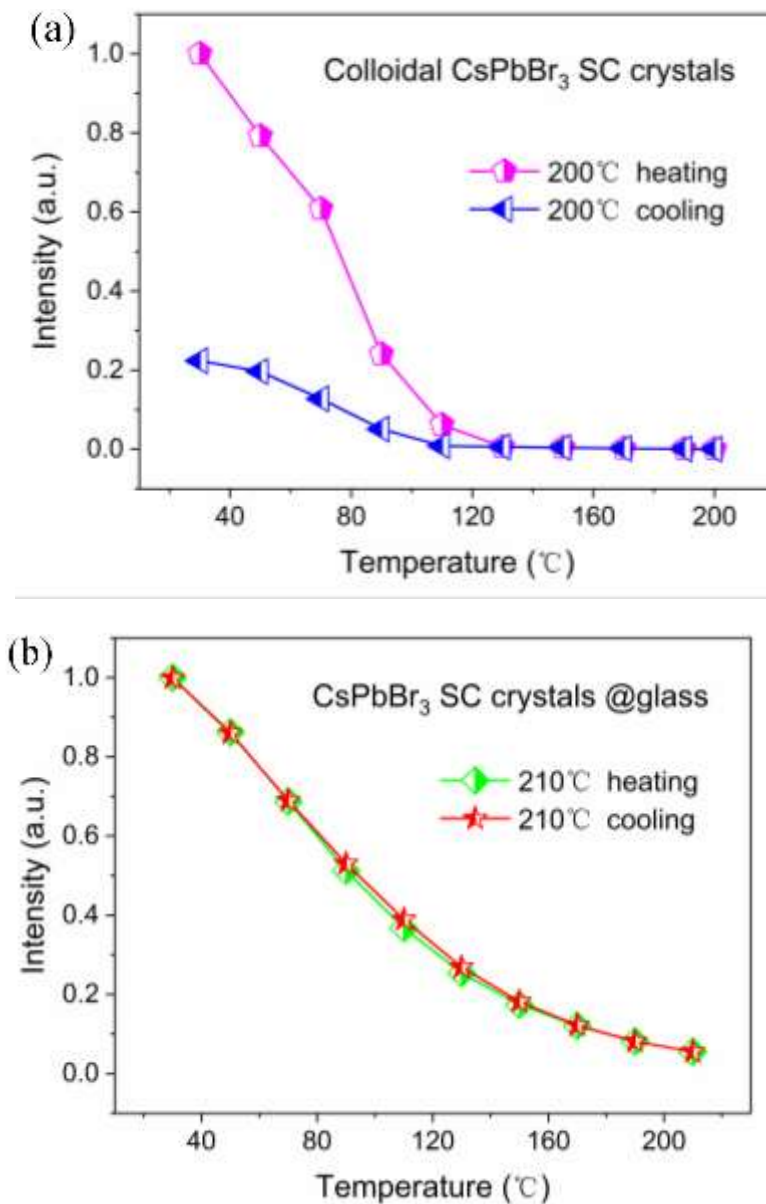
**Figure S2.** Integrated emission intensities of Eu<sup>3+</sup> versus Eu<sup>3+</sup> concentration.



**Figure S3.** (a) T-dependent PL spectra of the GC10 sample for CsPbBr<sub>3</sub> emission. (b) Measured and fitted plots of integrated emission intensity of CsPbBr<sub>3</sub> versus temperature.



**Figure S4.** Configurational coordinate diagram of  $\text{Eu}^{3+}$  in the  $\text{CsPbBr}_3/\text{EuPO}_4$  dual-phase GC.



**Figure S5.** T-dependent PL intensities for excitonic luminescence of (a) colloidal CsPbBr<sub>3</sub> SC (the data quoted from ref.1) and (b) CsPbBr<sub>3</sub> SC embedded in glass matrix via a heating/cooling cycle.

## Reference:

- 1 S. H. Zou, Y. S. Liu, J. H. Li, C. P. Liu, R. Feng, F. L. Jiang, Y. X. Li, J. Z. Song, H. B. Zeng, M. C. Hong and X. Y. Chen, *J. Am. Chem. Soc.* 2017, **139**, 11443-11450.