

The EDX data for MPC Composite before and after addition of arsenate and SEM mapping of MPC/As(V) displayed in Fig (S₁,S₂). From the fig.S₁a shows that MPC composite contains Fe, O and C elements. Further addition of arsenate into to MPC composite, the MPC composite having higher affinity towards the arsenate ions. Which results, provide evidence for elements Fe, O, C and As(V) presence in MPC/As(V) and results was displayed in Fig.S₁b. Further SEM-Elements mapping analysis of MPC/As (V) was done to confirmed the presence of C, O, Fe and As(V) shown in fig.S₂.

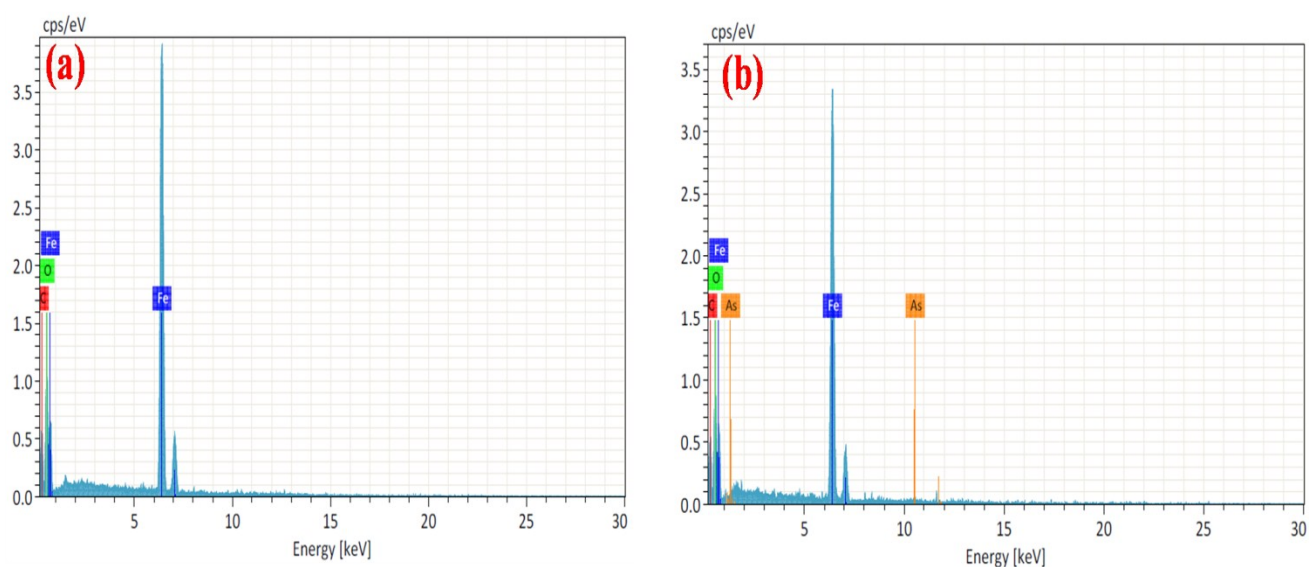


Fig.s₁. EDX data of before and after addition of arsenate into the MPC Composite.

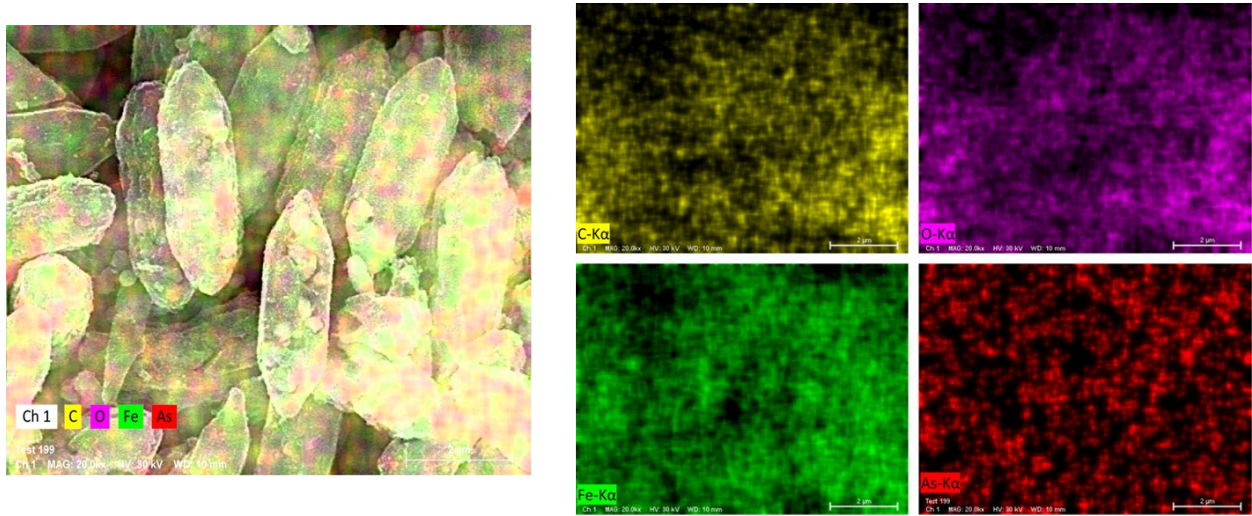


Fig.s₂. The SEM mapping of each element present in MPC /As(V).